



NAVIS™

YACHTS DESIGN & LIFESTYLE

Issue 50 | October / November '19

Lürssen 111m
TIS



Alia Yachts 60m

Superyacht Samurai

Baltic 112

Superyacht Liara

Yachting Events

Monaco Yacht Show Review

Luxury Lifestyle

Palazzina Grassi Venice

Bentley Continental GTC

OMER Restuarant at Hotel de Paris

www.navisyachts.com

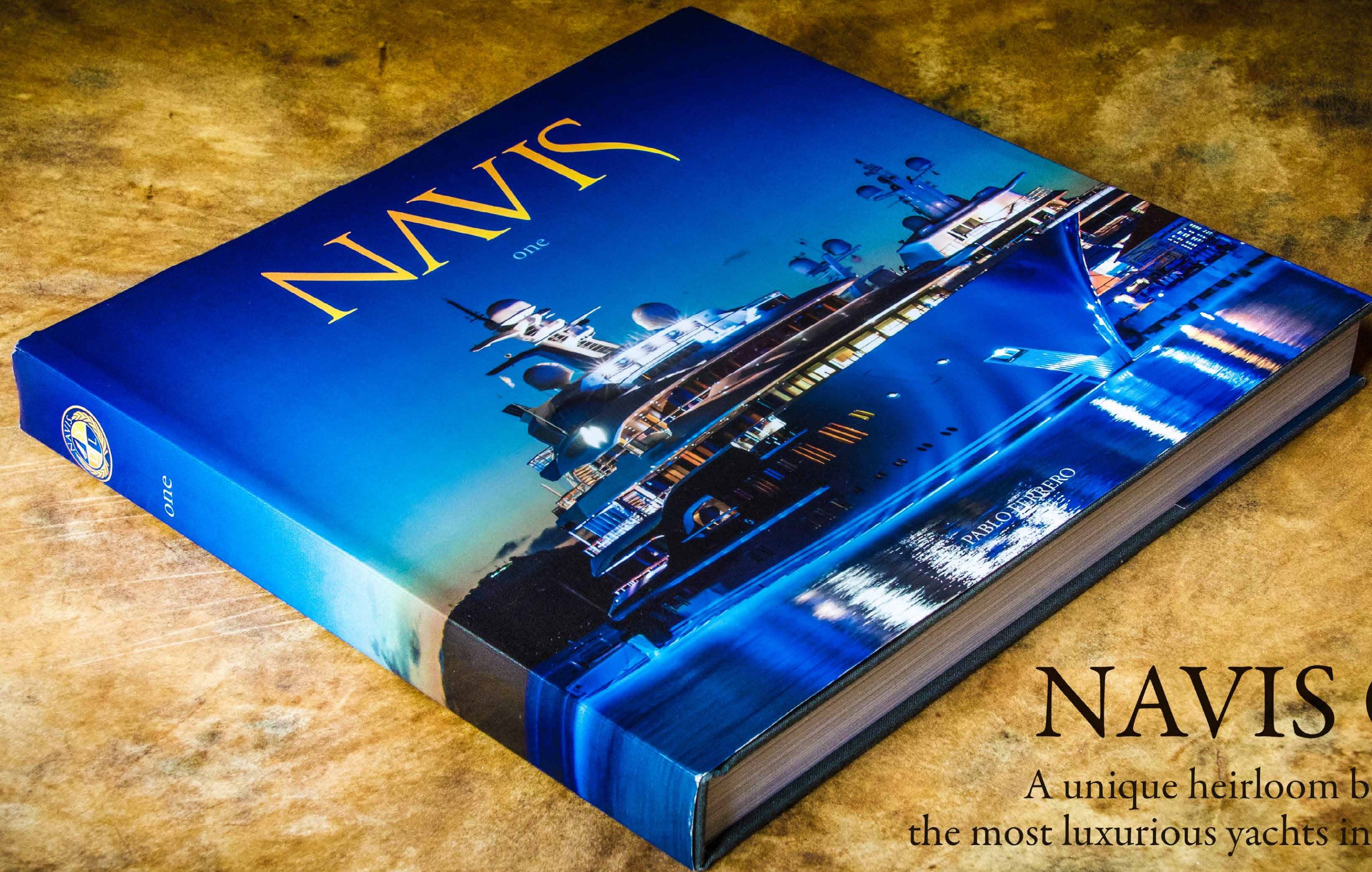


0 74470 26308 1



The difference is to be perfect at any size.


The difference.



NAVIS One

A unique heirloom book about
the most luxurious yachts in the world

Order your copies: +1 786 406 6111 - enquiries@navisyachts.com - www.navisyachts.com/store

An impeccable, 240-page presentation,
every chapter covers, in meticulous detail,
the most amazing superyachts
cruising the waters today.





building expertly crafted motor yachts
et takes the world's most unique 46-meter
example of how ISA overcomes challenges
designers for years. Given the builder's
function and beauty, it's no surprise that
stures that will interest aficionados of art,
ring.

The Art and Luxury of Silver Wind

Not everyone will get excited about the technical achieve-
ments that make Silver Wind such an innovative yacht. Any-
one, however, can understand that beauty, art, and luxury
make her a prominent vessel.

Every aspect of Silver Wind's interior was carefully crafted
to meld traditional and contemporary designs. Guests explor-
ing the ship will find rooms full of artistic elements. Even
the furniture has an expressive depth reserved for the most
sophisticated yachts and resorts. A combination of quality
woods such as walnut, satin rosewood, and high glass chery
becomes even more remarkable thanks to details that include
precious stones, mother of pearl, and art glass.

Other artistic decorations found aboard Silver Wind include
mosaics, opalescent walls with repeating patterns, and metal
stair carpeting that brings life to every inch of the vessel.

Life Aboard Silver Wind

Silver Wind has enough room for 8 guests to live comfor-
tably. Living quarters include a master stateroom located
on the main deck, a VIP stateroom, and three guest cabins
with double beds. Whether debbing privately in the water or
hoping aboard to a new destination, guests do not have to
worry that noise will interrupt their comfort. Silver Wind
uses advanced active noise cancelling technology to protect
all cabins from disturbing sounds.

Guests enjoy aboard Silver Wind have access to numerous am-
enities options through fully-integrated integration. The system
controls air conditioning, water systems, and controls the environment light
and temperature systems, etc. Fully located throughout the ship
the system has ability to control every corner of these systems.

A perfect mix of Motor Yachts and Sailing Yachts
transports the reader into a world of adventure,
passion and luxury that few have the privilege
to experience.

NAVIS One is an exceptional book that will be
cherished for years, not only for its fascinating
reading, but also for its value as a design resource.

Order your copies: +1 786 406 6111 - enquiries@navisyachts.com - www.navisyachts.com/store



Monaco Yacht Show



Samurai



Liara



TIS



The Hotel Palazzina

Contents

A Look Inside the Always Fabulous Monaco Yacht Show	13
Lurssen 111m TIS	43
Baltic Yachts 34m Liara	71
Alia Yachts 60m Samurai	93
Bentley Continental GTC	115
Stay in Opulent Beauty at The Hotel Palazzina	125
A Culinary Voyage at Monte-Carlo's ÔMER	138

*For queries or information requests about the yachts in this issue contact: enquiries@navisyachts.com



Monte-Carlo's ÔMER



Continental GTC

STAFF

Year 8 - Number 50
October - Noveberr 2019

Editor-In-Chief, Director:
Pablo Ferrero
Editorial Assistant:
María Donadio

Contributors:
Jodie Oaks, Brian Handcock, Emma Hersh, Steve Lumley, Janine Devine, Andrew Paniello

Design:
Gabriel Parra

Contributing Editors:
Jorge Arcuri

Photography:
Klaus Jordan, Josh Czachur, Breedmedia, Jeff Brown, Richard Pardon, Michele Sirigu, Ventdautant, Pierre Monetta, ChristianLARIT, Porto Montenegro Media, Clint Jenkins, Zoran Radonjic, Klaus Jordan, Ferretti Media, Rossinavi Media, Tankoa Media, Sunseeker Media, Gulf Craft Media, Royal Huisman Media, Pablo Ferrero

Advertising:
advertising@navisyachts.com
Letters/Comments: contact@navisyachts.com
General Enquiries: info@navisyachts.com
Subscription Enquiries: contact@navisyachts.com
<http://www.navisyachts.com/store>
Website: www.navisyachts.com

Navis Yachts is published by Flat World Communication LLC.
Copyright Flat World Communication LLC. ISSN 2160-7966. All rights reserved. Reproduction in whole or in part without prior written permission from the publisher is strictly prohibited. Great care has been taken throughout the magazine to be accurate, but the publisher cannot accept any responsibility for any errors or omissions which might occur. Although every care is taken with manuscripts and photographs submitted.

Navis ISSN 2160-7958 (Print)
Navis ISSN 2160-7966 (Online)
Navis Yachts is a bimonthly publication:
Flat World Communication LLC
201 S. Biscayne Blvd., 28th Fl, Miami, Florida, 33131
t. +1 (305) 913 1337

A Look Inside the ALWAYS FABULOUS MONACO YACHT SHOW

Photos: Porto Montenegro Media, Clint Jenkins, Zoran Radonjic, Klaus Jordan, Ferretti Media, Rossinavi Media, Tankoa Media, Sunseeker Media, Gulf Craft Media, Royal Huisman Media, Pablo Ferrero | Words: Andrew Paniello, Janine Devine, Pablo Ferrero





Feadship Lonian





There is no vessel more associated with prestige and luxury than the yacht, and there is no place on Earth more associated with opulence and excess than Monaco. The Monaco Yacht Show has certainly earned its reputation as one of the grandest showcases of maritime engineering and craftsmanship, the very best the yachting world has to offer. Even with such a stellar reputation to live up to, the multi-day showcasing exceeded even our expectations.

Surrounded by the lush, rolling hills of the south of France and the sparkling Mediterranean Sea, Monaco has always had an almost surreal allure, filled with grandiosity and unbounded ambition. Even before the formal presentations began, the air was buzzing with rumors about this year's newest fleet of yachts. Both industry titans and yachting enthusiasts gathered in anticipation of viewing some of the most impressive vessels ever to set sea.

Over the course of our stay in Monaco, we were able to witness dozens of yachts, each with its own fair share of credentials. Some yachts challenged conventional design and presented dynamically new ideas. Others stuck with traditional elements, harkening back on the yachting community's rich and captivating history. Regardless, every craft we saw had its own unique story to tell, adding yet another chapter in the timeless tale of humanity's passion for the sea.

With yacht shows such as these, it is seemingly impossible to record and recall all of the truly extraordinary features we were able to sense and enjoy. However, three shipyards—Lürssen, Feadship, and Perini Navi—introduced truly impressive vessels. Two fantastic dinners, both specially prepared for the NAVIS guests, will also remain in our vivid memories for many years to come. Only one place on Earth, the always fabulous Monaco, could provide such a breathtaking and illuminating experience.



Benetti Metis



Baglietto V-Line



Heesen Akira



Baltic Yachts Liara

While all shipbuilders featured in Monaco this year were incredibly impressive, Lürssen was perhaps in a league of their own. On the first day of the show, Lürssen unveiled a 111 meter superyacht, M/Y TIS. Complete with an operating helipad in the bow, ample outdoor deck space, and countless luxury features, this yacht is one that will be remembered for ages.

The most impressive feature of TIS is that, beyond her magnificence and splendor, she is the largest yacht ever presented in Monaco. Despite her size, she can navigate the high seas with grace and ease, carrying along both the wide-eyed and the self-indulgent everywhere she cruises.

We were fortunate enough to be among a select group of media invited to witness TIS's exquisite interior. From the moment we stepped on board, it was as if we were transported into another world, where luxury and aesthetics reign supreme. Despite her size, the layout of TIS is surprisingly intimate. Surrounded by marble, gold, and other materials typically reserved for royalty, we reveled in a state of pure bliss as we walked her majestic halls.

TIS is the perfect blend of power and prestige; while her sturdy hull is capable of breaking through ice, her interior is committed to preserving refinement and sophistication. It is clear that— with more than 1 kilometer of space to work with—nothing was sacrificed in the crafting of this architectural and engineering masterpiece. Perfectly curved, painted, delivered, and designed, TIS is an eternal testimony to what the design team at Winch Design and Lürssen are capable of achieving. There is seemingly nothing on Earth that can be compared to the grandeur of this ship; she has set a new paradigm in the world of yachting, expressing a physical harmony between man and the Sea.







As we continued our journey through Monaco and the surrounding areas, we came across one of Feadship's most impressive ships. Their newest launch is the fantastic SYZGY 818. SYZGY is a term used in astronomy to denote a rare event, such as when three heavenly bodies align perfectly, with a lunar eclipse and new moon being prime examples, and 818 truly represented the dynamism of this vessel. An experienced owner shared with NAVIS in an off-the-record conversation that SYZGY 818 represent the future of superyachts. NAVIS looks forward to publishing a complete review of this superyacht in an upcoming issue.

During the annual Feadship Breakfast briefing, the company presented the 87-meter superyacht, affectionately named Lonian, a perfect blend of aesthetic excellence, sophistication, and an unabashed commitment to the good life.

While her sleek design, color scheme, and general layout were inspired by some of the most memorable yachts of years past, Lonian still maintains a sort of futuristic allure about her with her very distinctive appearance. She is the sort of yacht that makes a statement by simply existing. There were more than 13 years of superyacht building experience injected into Lonian's design — and it shows. The perfect juxtaposition of light and dark, glass and wood, and countless fine details have forged an appearance that is truly timeless. The Feadship team has continued to propel the yachting industry forward, with a demand for perfection and the absolute avoidance of shortcuts. As we can see in every square inch of Lonian's perfect body: the art of fine shipbuilding is alive and thriving.





While we have discussed, at length, the importance of tradition throughout the yachting community, we cannot ignore the need to constantly keep innovating. This year, one of the most innovative and futuristic designs was produced by Perini Navi. Rightly named The Falcon Rig Gallery, this collaborative project produced a collection of five sleek sailing yachts — measuring between 56m and 92m— ripped straight from the visionaries of the 23rd century.

From above, The Falcon Rig design has an absolutely lust-inducing geometry. Her sleek, narrow triangular frame presents the perfect blend of straight and curved lines. It is the physical manifestation of the works of Perini Navi Design Team, known for constantly challenging industry orthodoxy and demanding progress. The company also announced the formation of a joint venture with Dykstra and Magma to make the Dyna rigs available to the yachting industry.

Leveraging the use of today's latest technologies, the Falcon Rig Gallery refuses to compromise on anything. The combination of futuristic design features, easy handling, and measurable performance will launch the design into flight and cause them to become a mainstay name throughout the yachting industry. While Lürssen's exceptional mega yacht may have stolen the show with its exceptional size, the debut of Perini Navi's Falcon Rig line has already reinvented the way we look at sailing yachts. We heard that a letter of intent was signed for a new 92m Falcon Rig. Once again, Monaco has stood out as one of the most exceptional yacht shows we have ever encountered.





CRN 135



Rossinavi Alfa



Tankoa Bintador



Other Yachts and Upcoming Attractions

Seemingly every yacht that was able to grace the majestic harbors of Monaco this year is worthy of recognition. At a special presentation in the Fairmont Hotel Monte-Carlo, Sunseeker announced the debut of a new superyacht division. The company, which has produced 137 yachts over 33m since 2000, is excited to enter what is perhaps one of the most competitive spaces in the world, launching a new distinctive range of superyachts from 101' up to 161', built in collaboration with Pendennis and Icon Yachts.

We were also quite impressed with Alia Yachts' astounding 60m Samurai. The yacht presents a perfect arrangement of decks allowing for high performance and functionality. The Baglietto 65m superyacht, which was introduced on the second day of the yacht show, presents a modern twist on the classic style that Baglietto is well-known for.

Regarding new superyacht marinas, we were able to witness Porto Montenegro's plans for a 500 million Euro superyacht marina expansion. The investment, which will take place over the course of the next ten years, will help Porto Montenegro further maximize its potential and also establish itself as an industry innovator.

Many of our favorite yachts made an appearance on the very first day of the show. The Oceanco 90m DreamBoat presented a stunning aesthetic that received nearly universal approval. Nearby, we also marveled at an additional multi-layered ship, which was manifested in Abeking Rasmusen's sleek and stylish boat known as excellence. One quick examination of her form and functionality will reveal that this ship, without a doubt, is one that was indeed able to live up to her ambitious name.



Sunseeker T16

Our venture through the extensive array of ships, exhibits, and showcases was undeniably one that proved to be quite fruitful. We absolutely adored the Benetti 63-meter custom superyacht, which had just made its debut this year. Complete with a personalized gym on the Fly Deck along with extensive deck spaces on Owner and Bridge Deck, this was yet another example of the engineering perfection that only Benetti can provide. While slightly bigger, the CRN 79m superyacht, code name 135, who also made her debut to the world this year—was built with confidence and is able to perfectly capture the aesthetic preferences of the owners.

Overall, the many yachts we were able to see each challenged conventional design schemes and tried to offer something new to the community as a whole. We were thoroughly impressed with how Baltic was able to create interior spaces that enabled us to connect with nature in the 39m S/Y Liara. The wood, ample window space, and use of natural color schemes helped further the bond between humankind and the universe that governs our being. Elsewhere, Tankoa's Bintador (50m) and Columbus' 80m DRAGON were able to show off their geometrically perfect frames. We were able to also witness 48m M/Y Liliun, from Bilgin Yachts, float peacefully with the Mediterranean sun gently setting in the background.

The universal commitment to quality and aesthetic perfection could not be denied. As could be clearly seen with every vessel we had the good fortune to lay eyes upon, the yachting community keeps pushing itself to generate new ideas. Evolution, as Darwin would agree, is a constant process. Royal Huisman impressed us with their Dina-Rig 88m super sailing yacht project, named Lotus. Rossinavi, with their 50m project Alfa, Wally with their Wallypower 165, Heesen with their 57m project Akira, and Pershing with their project 140 proved that the supersport superyacht sector is active and full of innovative designs. Whether one is looking for a simple form of transportation or one of the most elegant superyachts in the world, excellence is undoubtedly well within reach. Beyond these companies, nearly every major European yacht builder made some sort of appearance in Monaco this year. We were pleased to learn about the industry's broader developments and see this dynamic community come together.



Abeking & Rasmussen Excellence



Royal Huisman Lotus



165 Wallypower



Lürssen Phenix²



Tankoa S702



Heesen Galvas



Dining in Paradise

Of course, no trip to Monaco could be complete without some culinary indulgence. As is our custom, the NAVIS team was able to arrange two spectacular meals for a select group of guests, with some of the world's most renowned chefs. At the Vistamar Restaurant at Hotel Hermitage, we enjoyed Chef Witz's world-renowned commitment to gastronomic perfection. Vistamar is a restaurant that is able to truly capture the eclectic flavors of the Mediterranean while creating an intimate and thought-provoking dining experience. The menu—which included celery cream, sea bream, rack of lamb, various cheeses, and crowned with an elegant chocolate flower for dessert—was one worthy of praise and admiration. The annual NAVIS dinner, which convened at a new restaurant from Alain Ducasse called Ômer, at Hotel de Paris, allowed us to celebrate yet another year of yachting enthusiasm and excellence. Overlooking Port Hercules, the five-course meal was filled with rich flavors, thought-provoking conversation, was the perfect way to bid farewell to Monaco.

The Magic of Monaco

As we departed Monaco, it seemed as if we were stepping out of a dream and returning back to reality. Monaco is much more than a place; Monaco is a state of mind and something we can take with us everywhere we go. As we experience the majesty of a finely-crafted yacht and as we mingle with fine food and drink in hand, it becomes abundantly apparent that the magical allure of Monaco continues on. The 2019 Monaco Yacht Show presented an unprecedented world of wonder and majesty. We don't know what next year's show will have in store, but we know one thing for sure: we must return. ☺

It is a pleasure to thank those who made this article possible:

Monte-Carlo SBM
Website: <https://www.montecarlosbm.com>

Ômer Restaurant - Alain Ducasse à l'Hôtel de Paris
Website: www.alain-ducasse.com
Immeuble Bords de Seine 1 - 3 Esplanade du Foncet
92130 Issy-les-Moulineaux, France

Le Vistamar Restaurant at Hotel Hermitage
Website: <https://www.montecarlosbm.com>

ASPIS
Website: www.aspis-superyachts.com
Email: info@aspis-superyachts.com

ASD
Website: www.asd-superyachts.com
Email: info@asd-superyachts.com







FWC
Luxury Products Marketing
MIAMI - t: +1 305 913 1337 - @: info@FWCadvertising.com - www.FWCadvertising.com



Lürssen | Im

TIS

Photos: Klaus Jordan | Words: Jodie Oaks





Lurssen has made it clear they are keen to redefine the term megayacht with the recent launch of M/Y Tis. Arching across the horizon at a staggering 111 meters, one could easily mistake this ship for the shimmering skyline of a city. It comes as no surprise then that Tis has been declared one of the largest superyachts in the world and has all the stats to back her up. A beam that measures 18.40 meters creates cavernous interiors, and her length in the waterline is a wonderful 96.20 meters. Make no doubt about it, Lurssen is making a statement.

Size Means Nothing Without Style

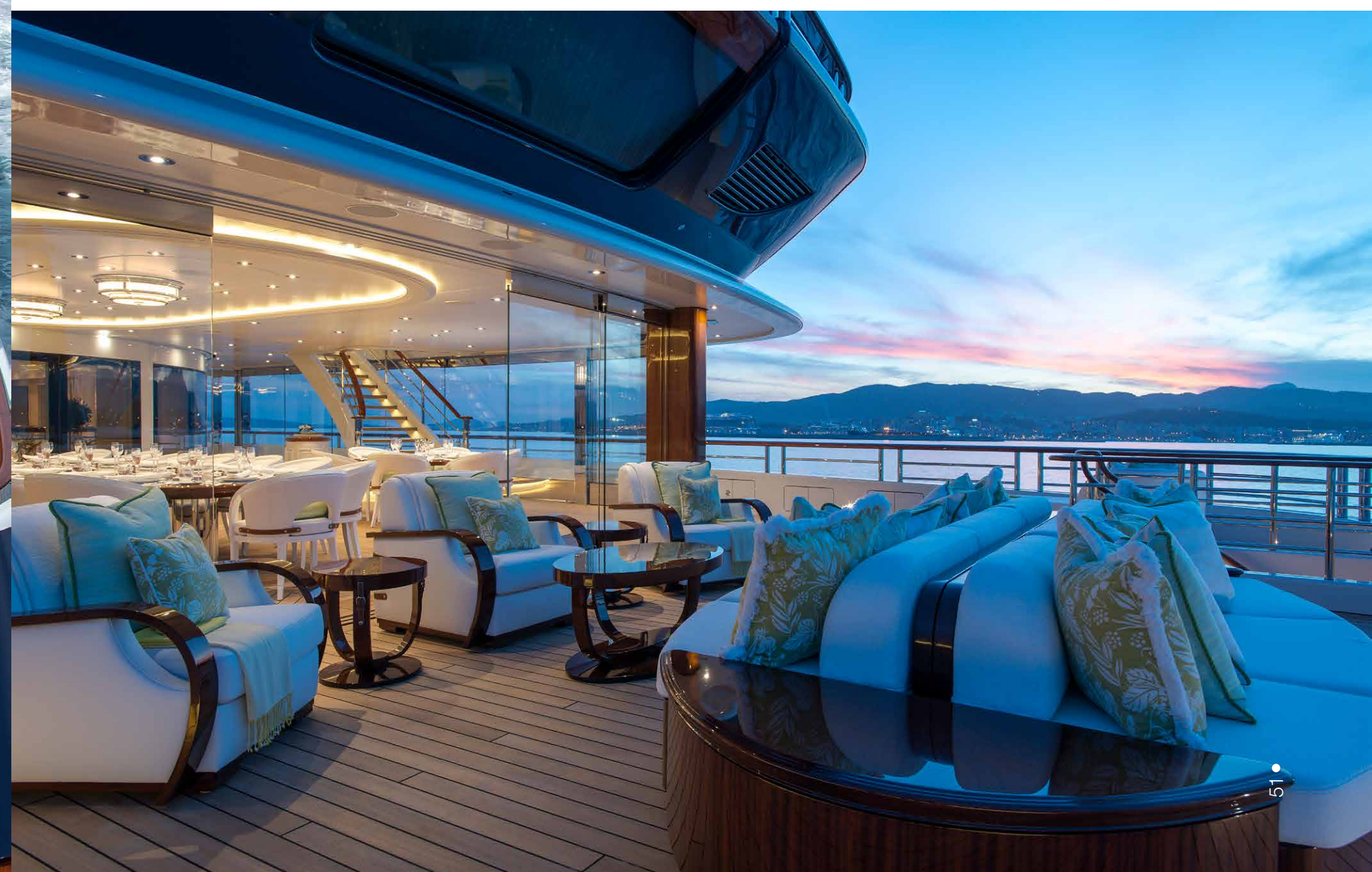
You may think that her gargantuan size would mark Tis as something as an elephant in the room, but with Winch Design working on both the interior and exterior with Lurssen, together they have curated a shapely vessel with beautiful proportions and sweeping curves - capturing a yacht that blooms with equal measure masculine and feminine elegance.

The designers were well aware that size is nothing without style, and the plan for Tis was to create a yacht that felt like a fresh clean page in an open book - bringing a sense of space and intimacy for creativity to play. With a brief like above, many other designers would have interpreted this as weaving in shades of minimalism and Scandi chic, but not Winch which is perhaps why they were chosen for such a rare and regal task. Instead, Winch wove in hints of timeless classical beauty - a reminder that some of the world's most glorious buildings and experiences are pure palate cleansers. This explains the touch of classicalism that can be found in the glimmering gold ceilings, the duck egg blue notes, and the Calacatta Vogli marble throughout. In fact, if you were to be introduced to just the interiors of Tis, you could easily think you were wandering through an Italian palace.

Svelte in Sapphire and Moonlight White

But first, to her exterior - svelte in sapphire blue and white with a steel hull and aluminum superstructure, the foundations are laid for a fabulous performance at sea and anchor, marked even more so by the state-of-the-art stabilizers which have been designed to work equally well at zero speed and at her cruising speed of 12 knots. For those days when you truly want to cover ground, TIS proves once again that she finds her size far from a hindrance as she is able to cut through the water like butter at a top speed of 18 knots.





Notes From An Old-World Opera House

As soon as you step inside M/Y Tis the effect is nothing short of jaw-dropping. As though designed to set the bar for every step you take, the formal entrance lobby on the main deck is a shimmering vision with its sweeping stairways in marble and trimmed 23.8-carat gold. There's a sense of having stepped into an old-world opera house as you lift your eyes to gaze at the soaring ceiling where suspended balconies of the upper deck lend a regal sense of romance.

To the aft of the lobby and the allure continues; pulling you dreamily towards a well-dressed office space adorned with sash windows, plump armchairs, and a snow-white fireplace. Moving on and you come to a rich dining room ready to seat sixteen supper guests and already weighty with the wonder of French dishes swimming in butter and worldly wines from the depths of handsome cellars. Roman-style pillars, silken carpets, and Louis XIV style powder blue and gold chairs and color schemes serve to further elevate the experience.

Expertly, the dining room doubles as a beautiful boardroom with the hidden charging points and an ingenious design where a painting disappears to reveal a generous flat screen for conference calls and power presentations.

Superyacht or Palatial Stay?

The Salon awaits next and the glorious blend of classical meets contemporary chic style soothes with soft creamy color schemes, just a hint of warm pastel, and a careful balance of light. As to be expected, every inch of material – from timber to textile is the finest that time and money can buy. There's more than a hint of the Versailles virility especially found in the rich parquet floors, the polished mahogany, the blue silk carpet, traditional Louis XIV furnishings, the singing gold gilding - all framed by the majestic impression made by the two titanic staircases that sweep down effortlessly. Once more, sash windows edge the room, and truly one would believe they were lounging in a five-star Parisian hotel rather than kicking back in palatial style on a superyacht.

This perfectly curated picture is far from accidental, as highlighted by Andrew Winch who confirmed the direction of the design by saying: 'The interiors are soft, gentle and classic – you could say it has the appeal of a London hotel like Claridge's or the Ritz.'









Turn of the Seasons in Every Suggestion

Turning on your heel and climbing the gorgeous staircase, guests will find themselves further enchanted as they enter the owners salon. There's more than a pinch of Parisian flair captured in the soft cream furnishings warmed by sumptuous sage green textiles, smooth marble pillars, leather ceilings and glimmering chandelier adorned in hand-blown glass leaf motifs. If the main salon serves with a cooling touch of summer and spring, the owners salon awes with its murmurings of autumnal calm. Antiques lift the elegance to even higher levels and despite the clear commitment to top of the line living, the owners salon doesn't feel stiff, cold or formal – but utterly inviting to those who want to curl up with a warm whiskey and reminisce with loved ones.

A winter garden sits prettily to the aft of the owners salon, all crystal-clear glass that can easily shift from a warm indoor social gathering to an al-fresco party with the slide of a door. A rich mahogany table entices outdoor diners to pull up a regal seat and indulge in silver service with views out across the sleepy fishing villages of the Amalfi or the glitzy shores of Monaco.

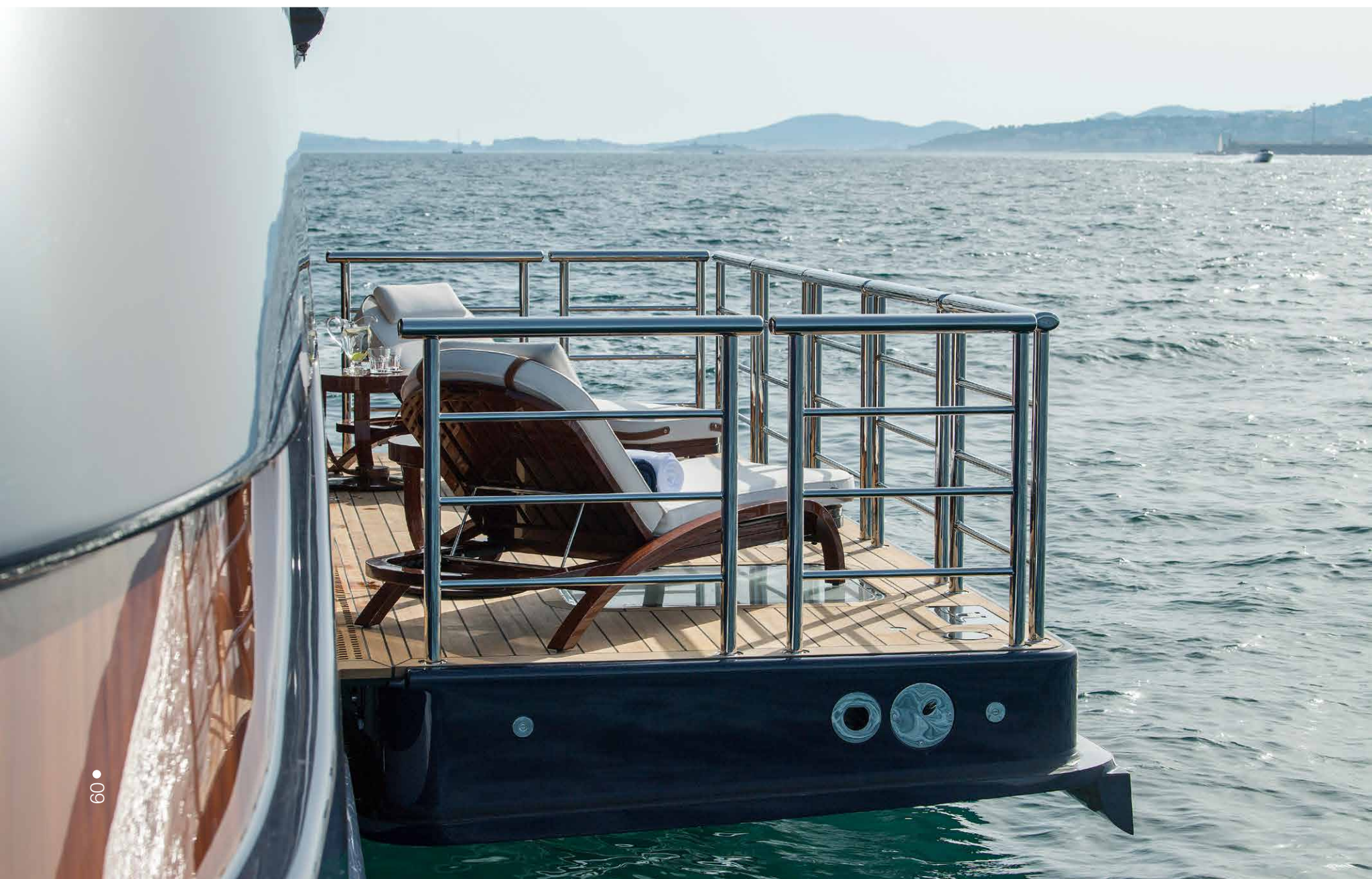
Sunshine Siestas and Starlit Snoozing

When the grand art of socializing gets too much, the owners can escape to their own plush haven. The stateroom is the epitome of the word heaven, thanks to its cloud-like white bed pleasantly plumped up with pretty pillows and shades of spring. Above the bed, an oversized skylight invites you to sleep beneath the splendid light of the moon or bask in a slice of afternoon sunshine when having a siesta. Tapestry style walls and a beautiful ottoman lend an heirloom feel that warms the heart. Windows wrap around the bow for dreamy bedside views. The his and hers bathrooms are monoliths of clean beauty and for that extra dose of pampering, the owners suite includes a massage room, hair salon, dressing rooms and private balconies to boot.

Around the World in Eight Cabins

Unlike many yachts where the guest cabins are curated for simple sleeps, M/Y Tis takes hospitality to the highest level. The stunning ship is more than equipped for 16 guests spread across eight charming cabins all designed after somewhere special in the world. From pretty Provence to the exotic energy of Marrakech, the bright lights of New York City and the royal treatment of London, the romance of rolling fields in Tuscany, the adventurous nature of the China Seas, the Tsar like texture of Russia, and the je ne sais quoi of Paris – colors, furnishings, light, and threads have all been woven together to transport guests into a heady world of wonder.









Lemon Soaked Shores and Cinematic Scores

But the last thing you will want to do on M/Y Tis is hide away in your room (no matter how perfect) as this is indeed a ship of pleasures. The beach club blooms with hints of an Italian summer – all warm teak woods, lime-washed oak, sink down sofas, a buzzing bar area, and a starboard door that leads to a sweltering sauna, refreshing ice-fountain, and foldout swim platform. Following on from the theme of Italian grace, the spa is a vision of salty sea air and citrus, even going as far to have fragrant lemon trees both in real life and carved into stone. Honeyed hues welcome the sunshine, stone floors look like they could have been lifted from the Roman era, and magical mosaics bring a sense of magic. The infinity pool is overtly generous stretching out to 12 meters, the jacuzzi bubbling beautifully on moonlit nights, and a steamy Hamman, rain showers, sunbeds, and opulent spa features invite pure rejuvenation.

If you can bear to tear yourself away from the spa, then perhaps a cinematic evening is on the cards. The art deco cinema sits on the lower deck and can be reached by passing through a soundproofed long glass corridor that cuts beneath the double-sized engine room allowing curious guests to glance up at the very workings of this wonderful ship.

Pleasure From Tip to Toe

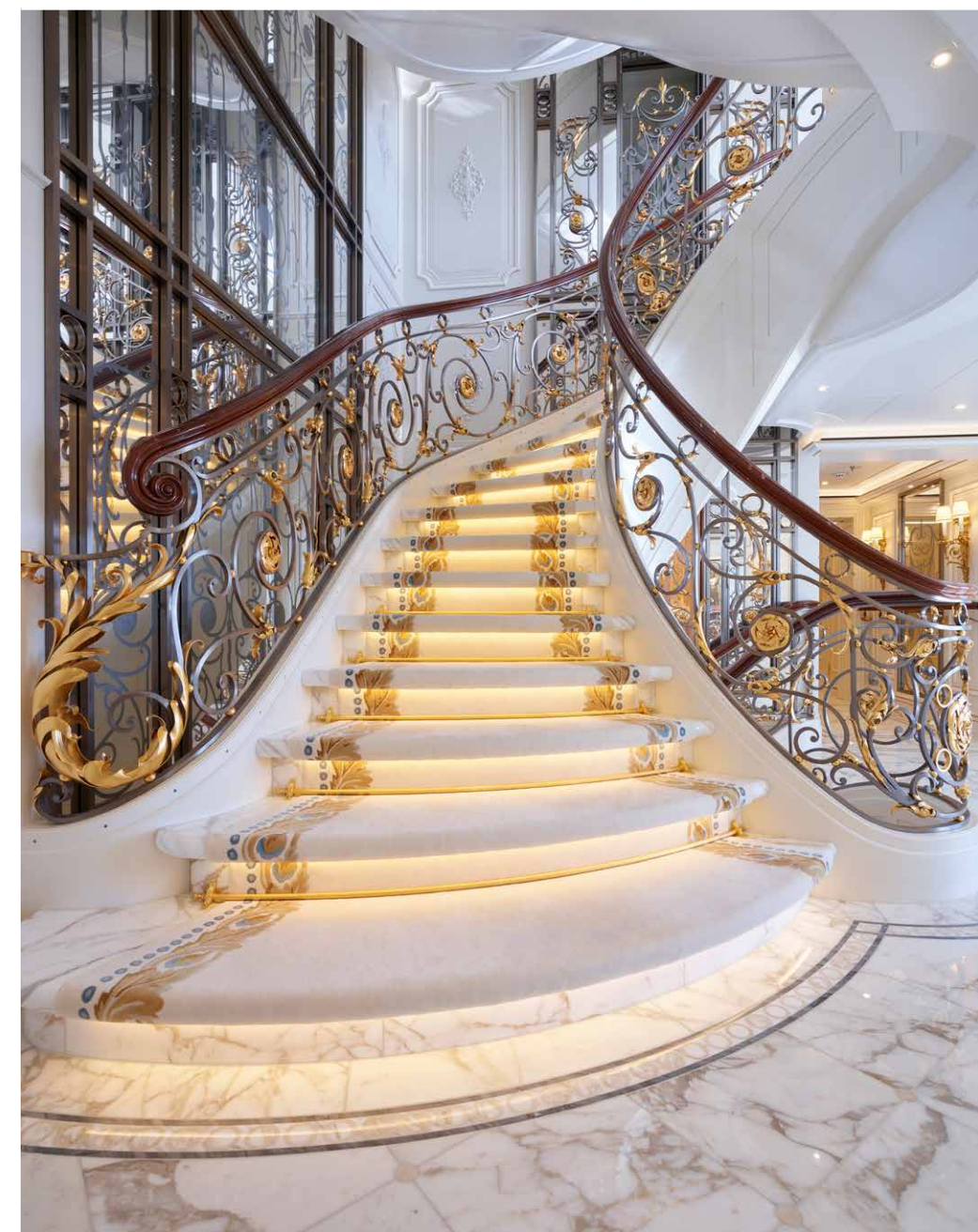
We aren't exaggerating when we say that M/Y Tis is a tizzy of pleasure from tip to toe. Perhaps one of the most enchanting spaces can be found on the upper deck in the shape of the yacht's very own tea-room. Taking inspiration from lazy afternoons in Paris or long lingering appointments in London, the tea-room is pretty enough to tempt the likes of Marie Antoinette herself. Traditional macaroon pastel shades, Louis XIV style, and a light strewn cozy interior provide a haven for ladies who lunch.

Down in the garage and the yacht holds all the toys and tenders one would expect from something so stunning. While brimming with personal watercrafts, the yacht also boasts a double helicopter landing pad that doubles up as a cinema space or dancefloor depending on party plans.

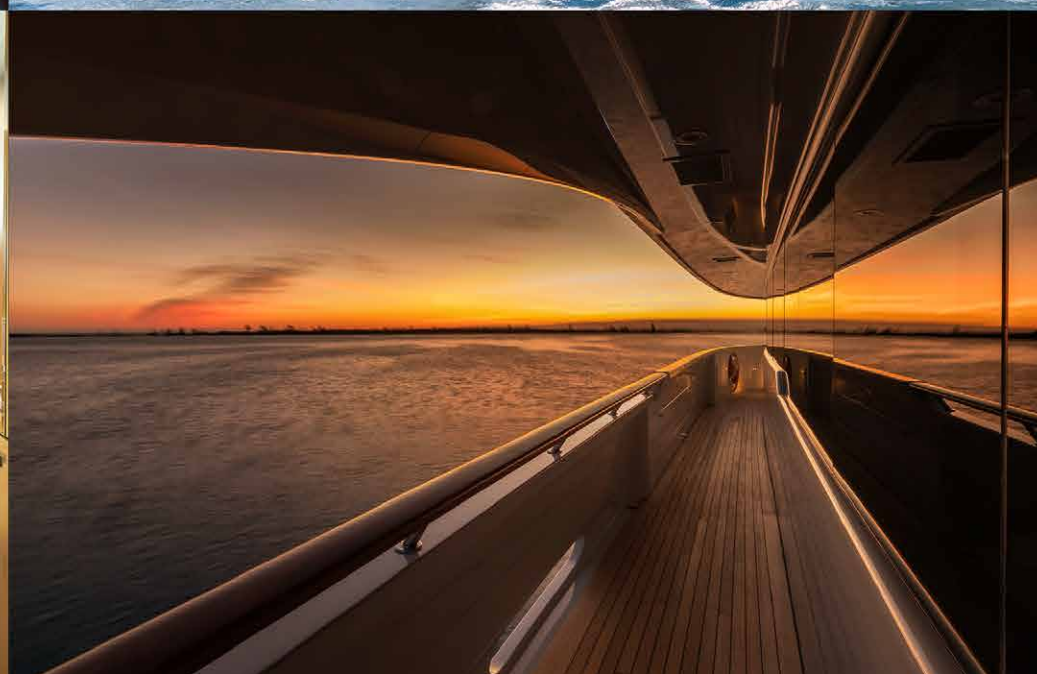
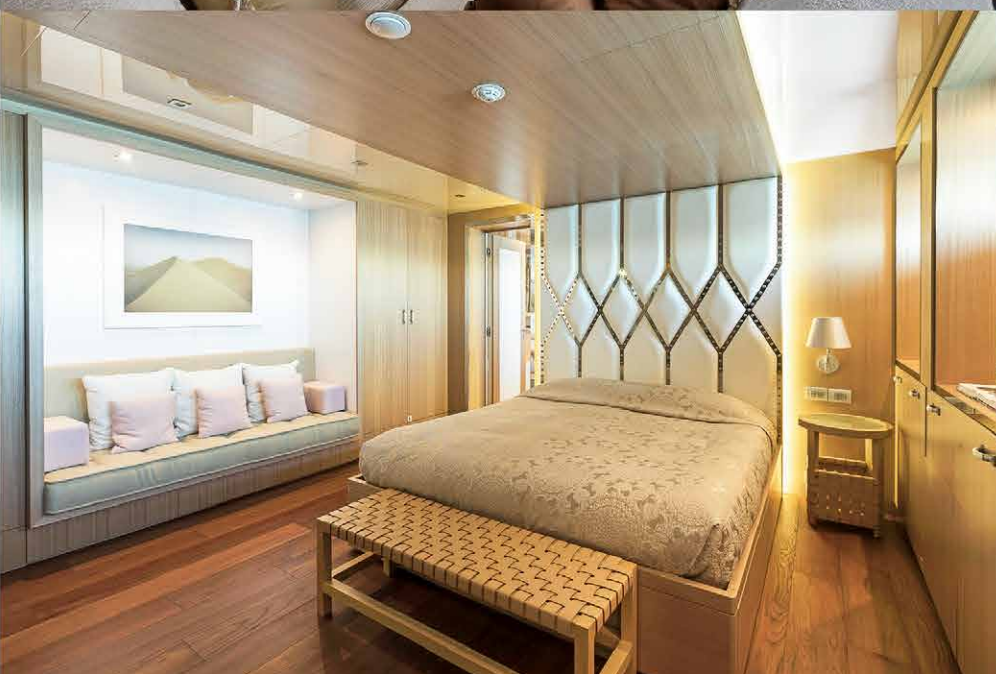
There's no doubt about it, Lurssen has created a yacht to eclipse all others. It takes a certain finesse to bring the likes of Claridges or the Ritz to the seven seas, but by Jove, I think they've done it. ☺

Specifications

» Length over All:	111,00 m
» Length in waterline:	96,20 m
» Beam over All:	18,40 m
» Draught:	4,20 m
» Speed:	18 knots







Professional Photography
That Conveys Luxury:
The Shot That Sells

Portfolio: www.thierrydehove.com
USA Cell: +1 561 526 3755
Europe Cell: +33 6 40 19 59 56

© 2018 Thierry Dehove Photography. All rights reserved. All the images, or derivative works, can not be used, published, distributed or sold without written permission of the owner.



Baltic Yachts 34m

LIARA

Photos: Josh Czachur, Breedmedia | Words: Brian Handcock





Baltic Yachts, based in Jakobstad on the northwest coast of Finland, has been building some of the world's most finest and most advanced yachts since 1973 when the company was founded by five skilled boat builders. They had a mandate, and that was to build boats that were lighter, stiffer, and stronger than anything any other boat builders were doing at the time, and those qualities are still at the forefront of all the boats they build, including the recently launched Baltic 112 Liara. The owner, a skilled and seasoned yachtsman, originally intended to build an out-and-out performance family cruiser, but his ideas started to change when he realized that he also wanted to be competitive on the race course. This led to a drive toward saving weight wherever possible, and the lighter and stiffer mandate led him to Baltic Yachts, where weight saving is almost a religion. He commissioned Malcolm McKeon Yacht Design to bring his vision to reality, and the stunningly gorgeous lines of Liara are the result. It also appears that McKeon followed that long-held belief that pretty yachts sail fast. By any measure, Liara is beyond pretty; she's an exceptional craft in every sense and as a result, is also very fast on the race course.

Liara has an easily driven hull with powerful stern sections, which is perfect when the yacht is rail down on a broad reach. From her plumb bow with a generous bowsprit, the lines curve gracefully aft to a maximum beam of 7.9 meters carried almost three-quarters of the way to the stern. The deck is flat and uncluttered and speaks of a purposeful intent to allow the crew the most amount of flexibility and efficiency when racing. There are no cozy nooks where guests can cuddle up with a book; no, the deck layout speaks volumes of the owners' competitive streak and his will to win races. He doesn't want his crew tripping over cocktail swilling guests while they hoist the spinnaker at the windward mark.

Two of the most complex pieces of engineering on the yacht are the telescoping keel and the retractable propulsion system. The telescoping keel retracts into itself but not into the boat, leaving the interior space unaffected. "One of the great advantages of a telescopic keel is that, unlike a conventional lifting keel, it doesn't encroach into the interior accommodation, so when we were working with the interior designers, it was one less thing to worry about," explained Malcolm McKeon.



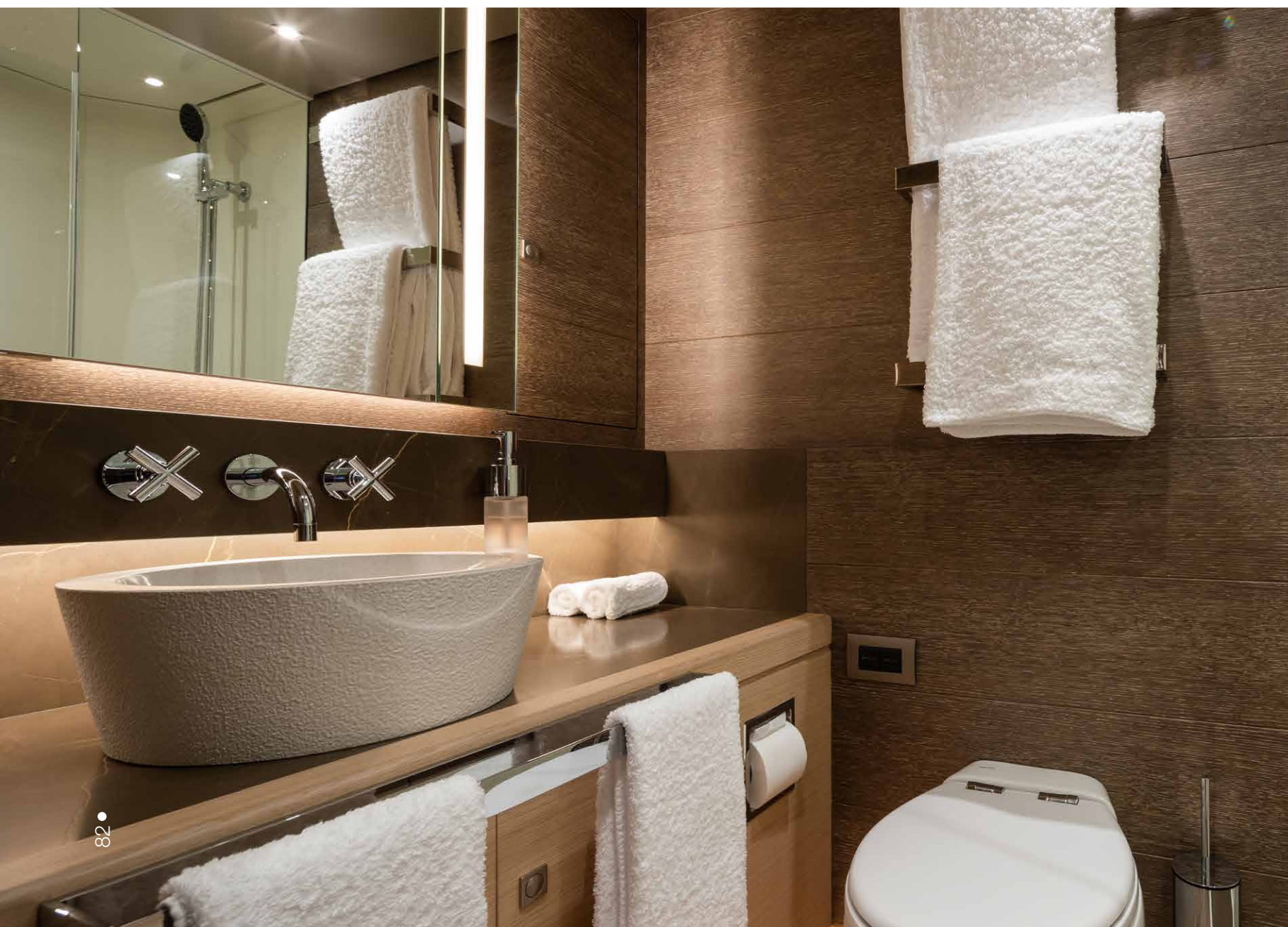


When fully extended, the draft is an incredible 6.15 meters, but when retracted, it's only 3.95 meters, still a fair amount, but when retracted, Liara can still enter most of the harbors in the world where the draft of a fully extended keel would make it impossible. It also provides immense stability and power that Liara's vast sail plan can take advantage of and take advantage of it she does. This yacht is a pure thoroughbred.

The retractable propulsion system, or RPS, and the submarine anchor system were also introduced to make the hull as streamline as possible and to remove as much drag as possible. The RPS is powered by a Caterpillar C7 engine and a controllable pitch propeller, and it can also be used as a stern thruster to help with maneuvering and docking the yacht. The submarine anchor system is titanium with a stainless-steel plough anchor and is deployed from a recessed well located under the yacht's bow. It's a very efficient system that can be operated from the push of a button. "It took us eight months to plan and engineer these systems, but we remained on schedule," said Tommy Johansson, Baltic Yachts' in-house project manager. "We paid particular attention to streamline the 'steps' created by the telescopic keel fin to make the section more hydro-dynamically efficient." In an ongoing effort to reduce wetted surface, through-hull fittings were reduced to a minimum, and for the same reason, it was decided to opt for a single rudder instead of twin rudders in the ongoing effort to reduce weight.

While much of this finessing and precision engineering goes unnoticed to a casual observer, the exterior styling and interior design do not, and both are contemporary and very attractive. There is a solid coach roof that covers a center cockpit where all of the above deck entertaining is done. The coach roof is removable for racing, and this allows the helmsman a clear view forward from the twin steering stations found port and starboard. The wheels are outboard, giving the helmsman an unobstructed look at the sails as well as the way forward. All sail control lines are led below deck so that there is no distracting clutter to draw the eye away from the clean simplicity. The primary winches used to trim the sails are behind the helm station to enabling easy 'cross-winchng', which means taking the headsail sheet to the windward side for sail trimming and other maneuvers. This keeps the guest area completely free of running rigging. There are a number of asymmetrical and Code 0 type sails that are used for downwind sailing, and these are kept in designated lockers on the foredeck so that the sails are easily accessible and not a distraction.



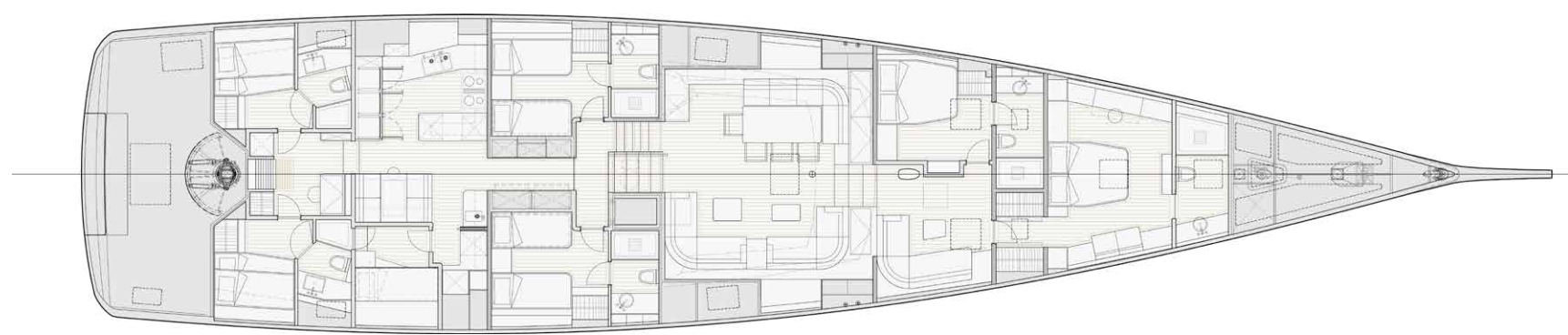
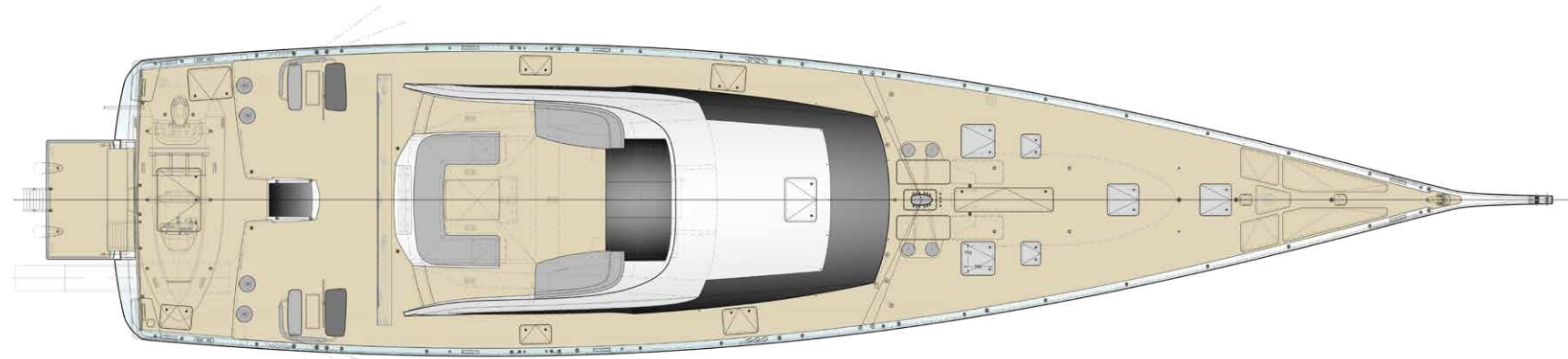




The owner is an experienced yachtsman with a keen interest in engineering, and he used the knowledge gained from his previous yachts to make Liara easy to handle by a core crew so that she can be quickly prepared for sailing. Liara's skipper John Walker explained. "By focusing on systems usability, these and other details make handling Liara's running rigging and sail inventory much easier and faster to use so we can be sailing from anchor up in the shortest period of time." John Walker will work with his co-skipper Tom Haycock on a rotational basis. Both men brought a wealth of experience and expertise to this project, having had considerable experience in the J-Class fleet.



For the interior styling, they commissioned the Adam Lay Studio. Established in 2003 and based in Hampshire, England, Adam Lay Studio is a multiple award-winning boutique superyacht design studio. It's principal, Adam Lay has a Bachelor of Arts degree from Coventry University, and his technical and artistic expertise is discernible in his designs that have safety, seaworthiness, longevity, and timelessness at their core. Liara is most definitely not an exception. The design brief called for the interior styling to capture the atmosphere of the islands. They were asked to design an interior with a natural aesthetic augmented by bright colors in the soft furnishings inspired by the incredible colors of an island environment. "Liara's interior is intentionally 'weathered' to look and feel natural, comfortable, and relaxing," explained Lay. "This neutral backdrop is intended to future-proof the vessel in the event of resale, allowing any potential subsequent owners to decorate the interior to their own taste." Color is introduced in the soft furnishings, which are complemented by artwork created by local Guernsey-based artist by the name of Valerie Travers. The dining table and coffee table surface finishes are designed to mimic ripples in calm water. The hanging locker doors are also designed to reflect the appearance of water or tree bark with the intention always being to use stylized elements and not a literal facsimile to create an atmosphere. The textures on some of the fabrics chosen continue this feel, and the lighting is carefully positioned to pick up and highlight these elements.

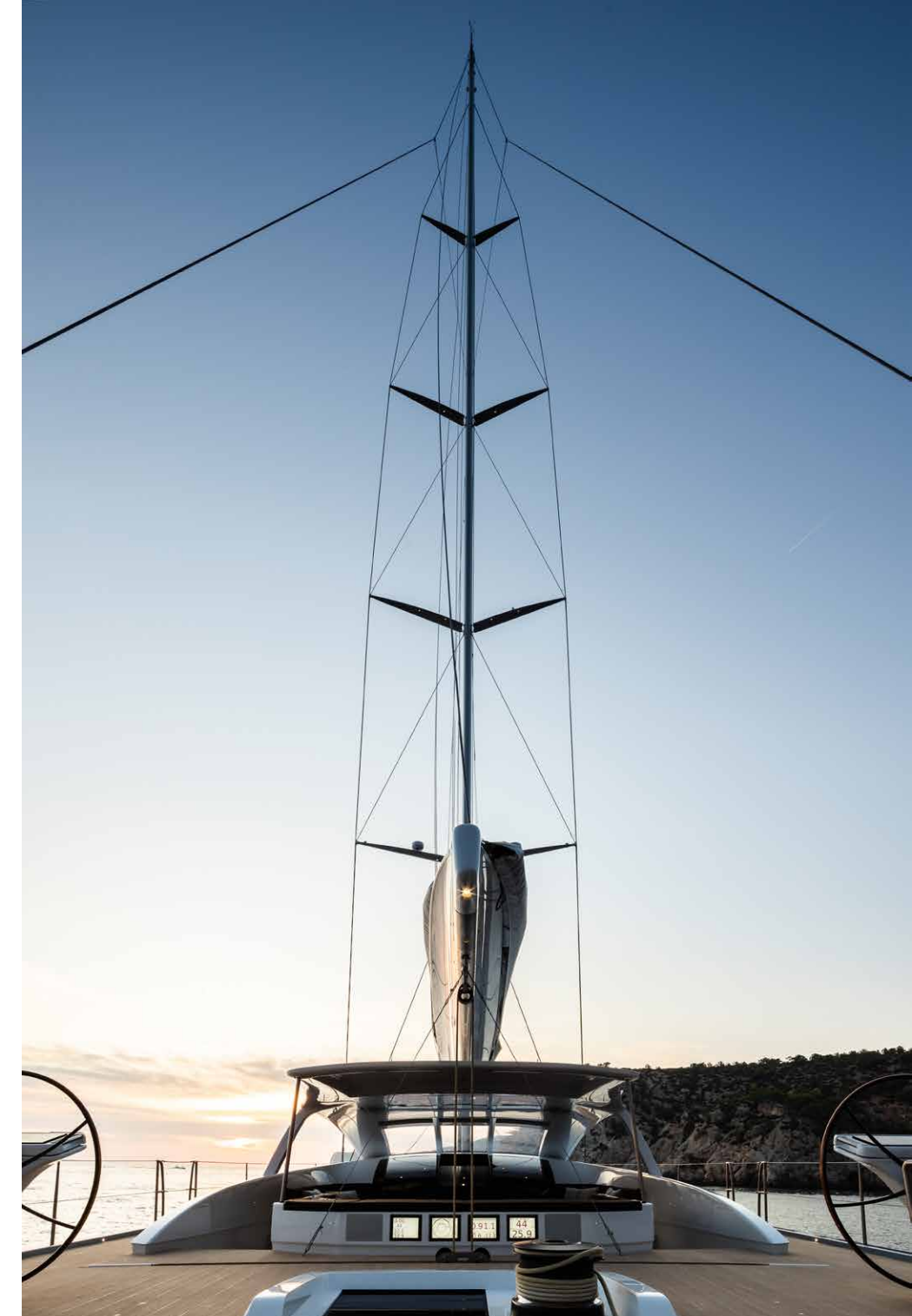


You descend from the cockpit into a comfortable and very well lit main saloon. To port, there is a large dining area and opposite two comfortable U-shape couches with coffee tables perfect for relaxing and having a good conversation. Going forward, you pass a VIP guest suite to port and a second cozy seating area to starboard. All the way forward is the owners' cabin en suite with a spacious and well-lit shower and toilet area. Aft of the main saloon are two additional guest cabins, a large and very modern galley, and all the way aft, the crew quarters. "Malcolm McKeon Yacht Design gave us an absolute gift in terms of the structure and space planning for the interior, which in terms of its feeling of openness is incomparable with any vessel of Liara's size," said Adam Lay. "I would argue this area of the yacht boasts a game-changing design."

Liara is the kind of yacht that anyone with a bit of a competitive streak would love to helm at the start of any race. The massive square-head mainsail and non-overlapping headsail make sail handling easy and maneuvering a cinch. You can depower the yacht by twisting open the mainsail, knowing that the precise engineering of the hull and deck have resulted in a light boat that can easily be brought up to speed as soon as the start gun fires. You can feel the power beneath your feet as the boat heels, and the crisp, clean lines have Liara gliding gracefully upwind toward the windward mark. As you bear away to turn at the mark, the boat heads onto a reach, and the powerful aft sections come into play. Liara surges forward but suddenly become whisper quiet as the massive asymmetrical spinnaker if hoisted. Looking aft, you see a light wake of soft ripples that perfectly match the styling of the dining table and coffee table surfaces. Perfect harmony between a yacht and its environment is finally achieved. ☺

Specifications

» L.O.A	34.14 m
» D.W.L	32.00 m
» Beam	7.90 m
» Draft	6.15/ 3.95 m
» Displacement	88 tons
» Ballast	31.35 tons





GBR
00L

It's time to start planning your crew security training

ASD 2019 Courses, Clinics & Seminars:

- Perfect Safe Room
- Protection at Anchorage
- Restricting Access Onboard the Yacht
- Boarding Avoidance
- Anti-Robbery Technics
- Spotting the Intruder
- Preventive Actions Prior Sailing
- Evasive Maneuvering
- Package Found Onboard
- Immigrants Handling
- Immigrants Confining
- Contagious Agents
- Basic Negotiation Skills

Playing roles in security scenarios:

A series of specially planned drills and exercises conducted at appropriate intervals taking into account the yacht type, personnel, port facilities to be visited and other relevant circumstances. Debriefing after scenario unfolds – lessons identified – lessons learned together with our experts.

Contact us for a free consultation and proposal

t: +1 786 406 6111

@: info@ads-superyachts.com

ASD-Superyachts.com

Headquarters:

201 S. Biscayne Blvd. 28fl

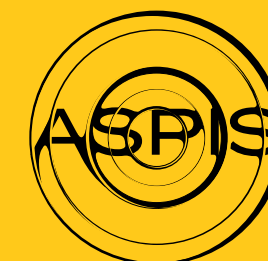
Miami - 33131FL

Education centers in Monaco.

Offices in America, Europe, and Asia

Supported by:

NAVIS





Alia Yachts 60m

SAMURAI

Photos: Jeff Brown | Words: Emma Hersh





Alia's Samurai superyacht was initially launched in Antalya, Turkey, in 2016 and was the largest ever launched by the yard. Her beautiful, smooth styling was the result of a collaboration between Omega Architects and Van Oossanen Naval Architects.

Her luxury, modern interior, was styled by Redman Whitley Dixon (RWD), a British superyacht design team. Samurai was designed to utilize clean, horizontal lines while providing ultra-luxurious amenities, and to create a stylish and fresh ambiance. Sporting an eye-catching profile, the sleek luxury design grabs the attention with its run of vertical windows along the exterior and upper deck arches.

Omega's yacht architects introduced their own specific language in describing the impressive 60m superyacht. Frank Laupman is the founder of the Omega company and describes Samurai as "a design featuring strong horizontal lines, and at the same time, she features an organic evolution of the wheelhouse deck superstructure into the aft overhang of the main deck. Important ingredients for her overall appearance. The yacht has a strong 'large yacht' identity, and generally, we tried to combine the clear statement of this new 60m exterior lines with the attention to detail on all levels." He was on point; Samurai has a bold and stylish exterior that turns heads.

The superstructure of the yacht was created with a purpose, fully sleek low rise profile featuring a host of vertical windows along the length. In terms of performance, Samurai can reach speeds of up to 21 knots, provided by the twin MTU 16V4000 M73L diesel engines, and features a Fast-Displacement Hull Form, which was pioneered by Van Oossanen Naval Architects.

It is quoted as being a 'revolutionary, patented hull form, achieving unprecedented efficiency.' This efficient hull design yielded favorable results during tank tests in Southampton. She has a maximum range of 4250 nautical miles and the steel and aluminum superstructure features at anchor stabilizers to provide the best possible stability and comfort when at zero speed.

Although first unveiled in 2016, Samurai has had little in the way of publicity, but that all changed recently. The superyacht was showcased to the yachting community at the September's Monaco Yacht Show, where her top European design was displayed to enthusiastic audiences, and Alia's superyacht building talents were demonstrated. According to Gökhan Çelik, Alia's president, who states, "In terms of the overall design and construction quality, Samurai demonstrates what we're capable of, and I'm delighted we finally have this opportunity to show her off to the yachting world."

The well-planned and versatile accommodation on Samurai features the best in luxury living with a bright, spacious tri-deck design. The layout has been crafted to maximize space inside the sleek exterior while retaining functionality and versatility, and much of Samurai's 1050 GT volume is hidden in the hull space due to the minimalistic superstructure.



A total of 6 cabins on the yacht provide comfortable and stylish surroundings for guests and can accommodate up to a total of 12 people. The guest cabins are comprised of a master suite, 3 double cabins, a convertible cabin, and even a VIP stateroom. Double cabins can be adapted to be twin rooms or doubles, making it useful for a variety of guests. There is enough room on board to house a crew of up to 14 people, and there is an array of impressive entertaining facilities, luxury accommodations, and water toys for family and friends to enjoy.

The custom-designed amenities aboard the superyacht include a waterfront gym with state of the art exercise equipment, a grand beach club with a fold-out swim platform, a large owner suite with large, full-height, windows, and refined luxury interiors, which incorporate Asian elements giving the space a timeless feel. Other superlative touches include an outdoor bar, sun deck, Jacuzzi, and foredeck seating. All areas have been tastefully designed with the utmost attention to detail, giving the entire vessel a sumptuous air. The incorporation of luxurious lounge areas and other extravagant elements give this superyacht an almost palatial and magnificent feel.

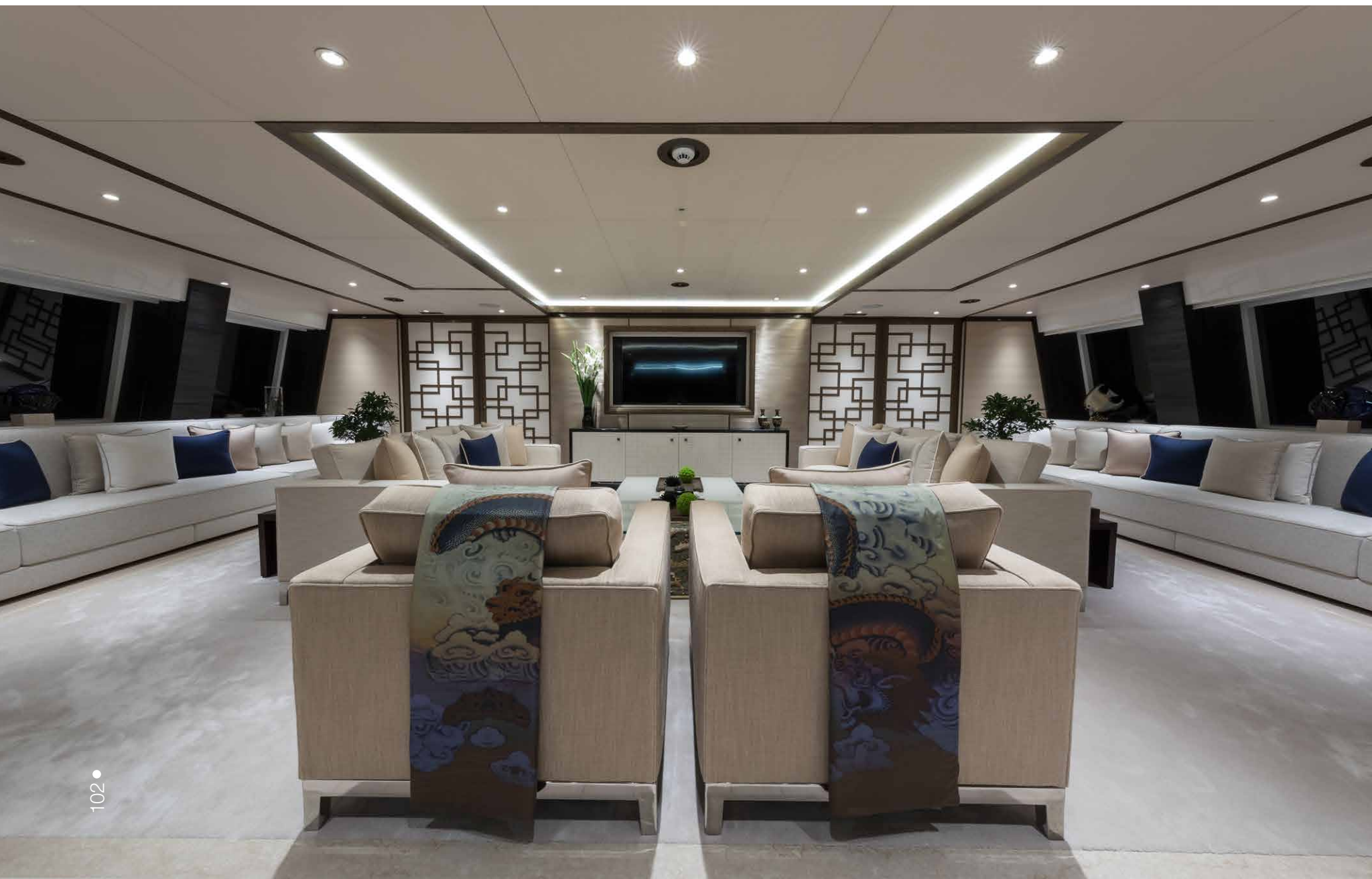
Once aboard, the main deck provides 4 of the guest cabins and features a spacious full-beam master suite. This forward-facing cabin connects the inhabitants with the ocean by way of the large vertical windows and is reminiscent of an upscale contemporary residence. Beautiful furnishings combined with lavish seating areas offer an elegant and luxurious experience. A large king-size bed dominates the sleeping area, and there is ample lighting provided by skylights throughout.

It also features a private lounge for relaxing and a large expansive bathroom and walk-in wardrobe. The inviting space creates a modern and fresh feel with the use of light natural wood elements combined with metallic and chrome details. Light is reflected throughout the cabin from the large floor to ceiling mirrors carefully placed in various locations.

Guest cabins feature light and bright accommodation that is well lit by the floor to ceiling windows, which allow for impressive views across the water. Sleeping arrangements are versatile with beds that can be used as a double or twin beds for additional guests, family members, or children. The cabin's decor follows the overall theme of the rest of the yacht with the use of wood and other natural elements along with recessed lighting and mirrors. A large en-suite bathroom completes the ensemble and makes this cabin easily large enough for 2 guests to share.

The main saloon is styled in an open plan design allowing for natural light and a large expansive feel, there is ample seating provided in tasteful neutrals, and oriental elements have been incorporated hinting at a touch of Eastern mystique. There are large couches with padded cushions that add a touch of color, and a dining area with a natural pale stone-topped table that can provide seating for up to 12 people. Guests may enjoy spectacular sea views from the full height wraparound windows and glass bulwarks that offer picturesque views of the outdoor scenery. The lower deck beach club may be accessed from here via the stairway on the aft deck.











Samurai's stylish interior decor has been created using natural materials and neutral tones, inspiring a tasteful and elegant atmosphere that gives a sense of warmth and functionality. The spacious and versatile spaces generate a modern, convivial feel, but supports privacy on those occasions it is desired. The well-crafted design gives an almost seamless indoor-outdoor flow to the living and outer deck areas, which only serves to add to the already large and spacious feel. The attention to detail and subtle design elements make for sumptuous and well-appointed living spaces.

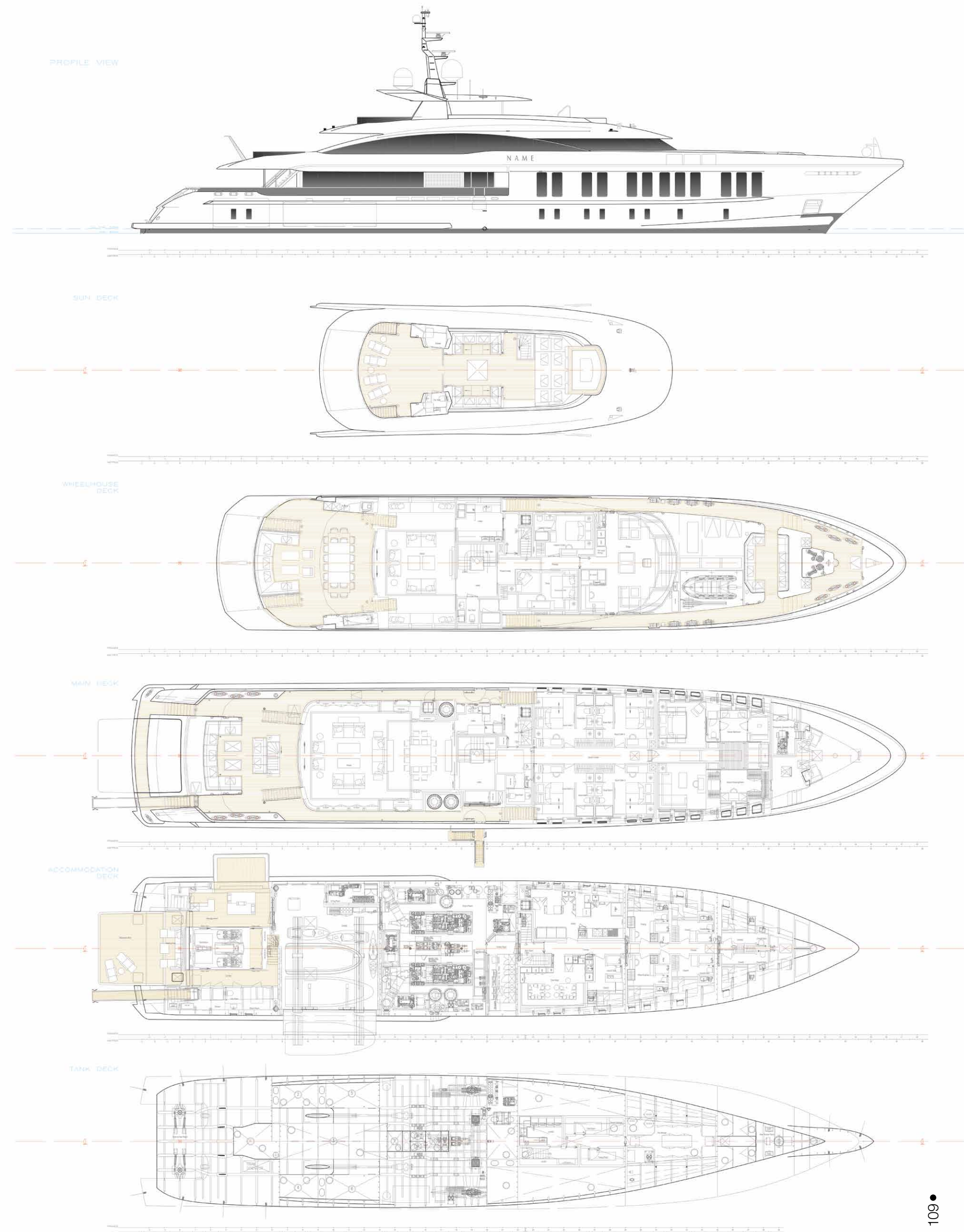
Visitors to the lower deck can relax at the sterns full beam, grand beach club, which incorporates large and comfortable seating, lounge chairs, a huge fold-down transom, and a side hydraulic swim platform, giving direct access to the water, and the yachts ample supply of water toys. It is perfect for relaxing and entertaining on hot summer days. For those that like their water toys, Samurai is well equipped and has enough to satisfy all water enthusiasts. Included onboard are the 2 tenders, along with a range of other water going items like jet skis and paddleboards. The large fold-down area of the beach club allows easy access to the ocean and makes using kayaks or jet skis a breeze. The open beach club area is framed with soft lighting at night to create a peaceful evening-time ocean experience. The remainder of the lower deck is dedicated to the gym, crew areas, and a garage large enough to hold the 2 included custom tenders of 6.3 and 7 meters in length.

The bridge deck is perfect for those who like to dine al fresco while traversing the seas, and the ample aft deck lounging area creates an ideal space for the enjoyment of casual meals. Plenty of seating and low-level tables create a relaxing environment to casually chat or enjoy a cocktail. To experience ocean views at their best, there is a spacious lounge area on the foredeck, which allows for impressive panoramas. A large built-in Jacuzzi offers guests the opportunity to further relax while sailing. The remainder of the bridge deck houses the Captain's cabin, wheelhouse, and a guest suite.

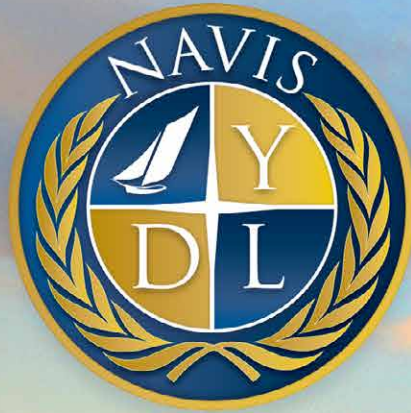
Superyacht Samurai has been specifically styled to create the utmost space and versatility in on the water living while deftly blurring the lines between indoor and outdoor spaces. Every imaginable detail has been considered in the construction of this yacht. The decor and contemporary interiors created by the design teams were purposely styled to foster a deeper connection with the ocean. The large, stylish living areas generate an experience that is suitable for families, friends, or groups, that wish to dine, swim, or socialize in one of the alfresco areas, or soak in the oversized Jacuzzi, all while still enjoying the luxury experience of this superyacht. ⊕

Specifications

» Overall length	60.2m
» Draft	3m
» Beam	10.6m
» Range at Economical Speed	4,250 nm
» Engines	2 x MTU 16V 4000M73L @ 3,860 bhp each
» Accommodation	12 guests + 14 crew







NAVIS

YACHT DESIGN & LIFESTYLE

YACHT SALES DIVISION

We help you fulfill your dream

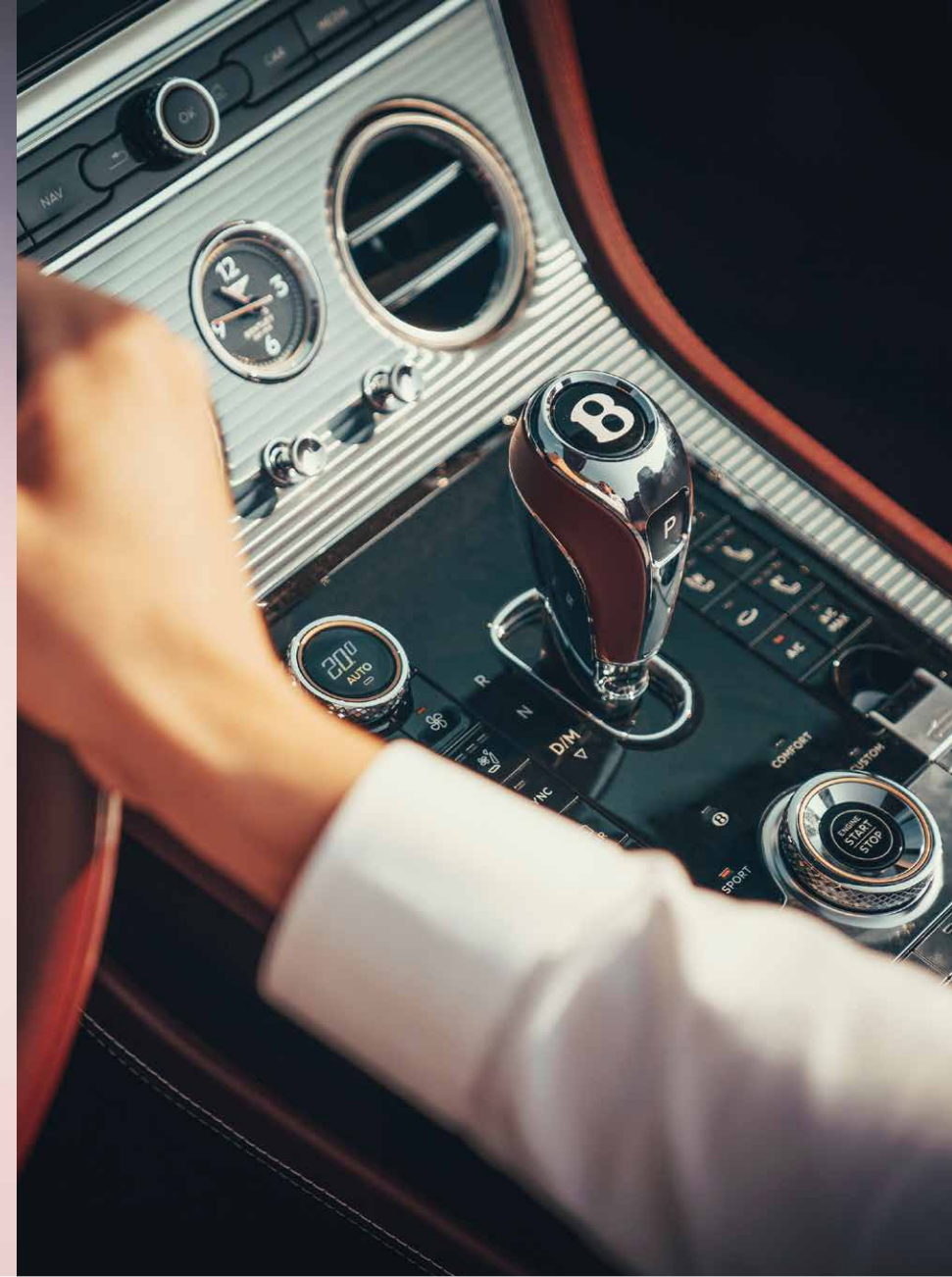
t: +1 305 913 1337 / e: enquiries@navisyachts.com





Bentley
CONTINENTAL GTC

Photos: Richard Pardon, Pablo Ferrero | Words: Steve Lumley



The Bentley Continental GTC is a fabulous hand-built offering that delivers a hugely entertaining car to drive, and it is one that exudes sophistication with an excellent interior.

For many, the reason for the Continental GT Convertible is to enjoy the true spirit of grand touring, which means driving along some of the world's best roads in a stylish and exhilarating motoring creation.

While the car competes with the likes of the Ferrari Portofino and the Aston Martin DB11 Volante, the Continental GTC is much like the Coupe on which it is based.

And one of the big attractions for what is the most advanced Bentley creation ever is that the Continental GT Convertible offers lots of innovative technology to boost open-top driving.

So, while the car has been created to make the most of sunshine, it's also been brilliantly engineered to deliver a comfortable and responsive car in colder conditions too. That's why there is Bentley's new 'active all-wheel-drive' available, so this is a grand tourer that can be enjoyed every day of the year.

Bentley has made the new GTC 20% lighter

To accommodate the roof, the car's structure is 5% stiffer than it was previously and by using aluminium panels extensively, Bentley has made the new GTC 20% lighter. The four-layer insulated fabric roof can be erected or stowed in just 19 seconds at speeds of up to 30 mph to give the car its impressive convertible credentials.

It's also a more attractive car than the model it replaces with a better profile thanks to the front axle being moved slightly forwards to boost weight distribution and leave a shorter front overhang.

The cabin is nothing short of impressive with a continuous ring of handcrafted veneer which encircles those on board.

There's no doubt that the new GT Convertible is setting imposing standards for motoring elegance and craftsmanship. This is a stylish offering that delivers a thrilling open-top grand touring experience and does so with aplomb.

Under the bonnet, the excellent W12 6.0-liter engine has been retained, and it features two turbochargers to help deliver more power and torque, and there's also cylinder deactivation to help improve fuel economy.

The 12-cylinder engine offers 626bhp of power and refinement with the eight-speed dual-clutch transmission delivering fast gear changes to underpin the smooth performance.







Impressive performance for the GTC

The remarkable performance sees the GTC delivering a 0 to 62 mph sprint time of just 3.7 seconds - that is supercar performance. The 0 to 100 km/h time is 3.8 seconds, and the GTC will power onto a top speed of 207mph.

Bentley also offers the Continental GTC with a 4.0-liter V8 engine that offers a sprint time of four seconds.

All of the models have all-wheel-drive to deliver the power to the road's surface, and fuel economy for the range is between 20-25mpg.

Behind the wheel, the GTC glides along all road surfaces thanks to the three-chamber air suspension and cornering is boosted with a 48-volt full active roll control system which does the job incredibly well. Confidence is also helped with a torque vectoring system that sees power being delivered to the wheel that needs it.

There's no doubt that the impressive ride is one that matches smaller and lighter cars - so the GTC is a very large car that is capable of doing things that defy physics.

This means the GT Convertible will grip well and the steering feedback delivers lots of fun and owners will appreciate that there's no fuss or drama when accelerating so quickly. Everything feels solid and reassuring when the GTC is being put through its paces.

To help deliver the superlative levels of performance, the Continental GT Convertible has the option of four driving modes to suit the driver's needs and their surroundings.

With the simple turn of a dial, it's easy to select comfort, sport, custom, or Bentley modes. This means drivers can configure their own combination of driving settings from a more responsive throttle to quicker gear changes to suit. The aim is to deliver driving pleasure, and Bentley has taken great steps to ensure that drivers can enhance their enjoyment behind the wheel as much as possible.

The sharp touchscreen is home to an excellent satnav, and there is smartphone connectivity plus an in-car Wi-Fi hotspot. Owners should also download the My Bentley app, which will give them access to their car via their smartphone so they can check fuel levels remotely or even lock their vehicle if necessary.



There is also a long list of equipment and an extensive personalization options list, including an impressive new tweed roof to create a distinctive appearance.

The GTC features new LED matrix headlights with a cut-crystal effect - and the LED tail lamps have a passing resemblance to illuminated red gemstones.

Continental GTC offers an enjoyable Bentley experience

The Continental GTC offers a delightful Bentley experience with an interior that is quiet when the roof is in place, and the seats are incredibly comfortable for long journeys.

The car is an excellent grand tourer, and with the roof down there's little turbulence to speak of though the air vents that blow hot air around the driver and passenger's necks help to keep them warm - as do the heated seats, armrests and steering wheel.

Along with keeping passengers warm with the roof down, there is also innovative cooling technology onboard to help them keep comfortable even on the hottest summer day.

Drivers have a 12.3-inch infotainment screen that is easy to use and hides behind a collection of analogue dials - the temperature gauge, compass, and stopwatch - or a plain piece veneer when not being used. It's an impressive sight and something of a party trick, making the touchscreen appear and disappear.

There's a digital instrument binnacle with an impressive 10-speaker, 650 watt sound system created by Bentley to enjoy, though it is possible to upgrade to a B&O 16-speaker, 1,500-watt system or an incredible sounding Naim 18-speaker, 2,200-watt offering.

Other potential upgrades will tempt most owners, including the rotating infotainment screen and specific paint schemes.

Bentley understands the needs of its discerning buyers, so the boot size is large enough for a lot of luggage, and the Continental GTC will cruise up to 400 miles on a single tank of fuel.

Essentially, the Bentley Continental GTC offers a compelling package that never fails to impress or inspire and for those who want refined and luxurious convertible motoring, then this car is simply unbeatable. ⊕





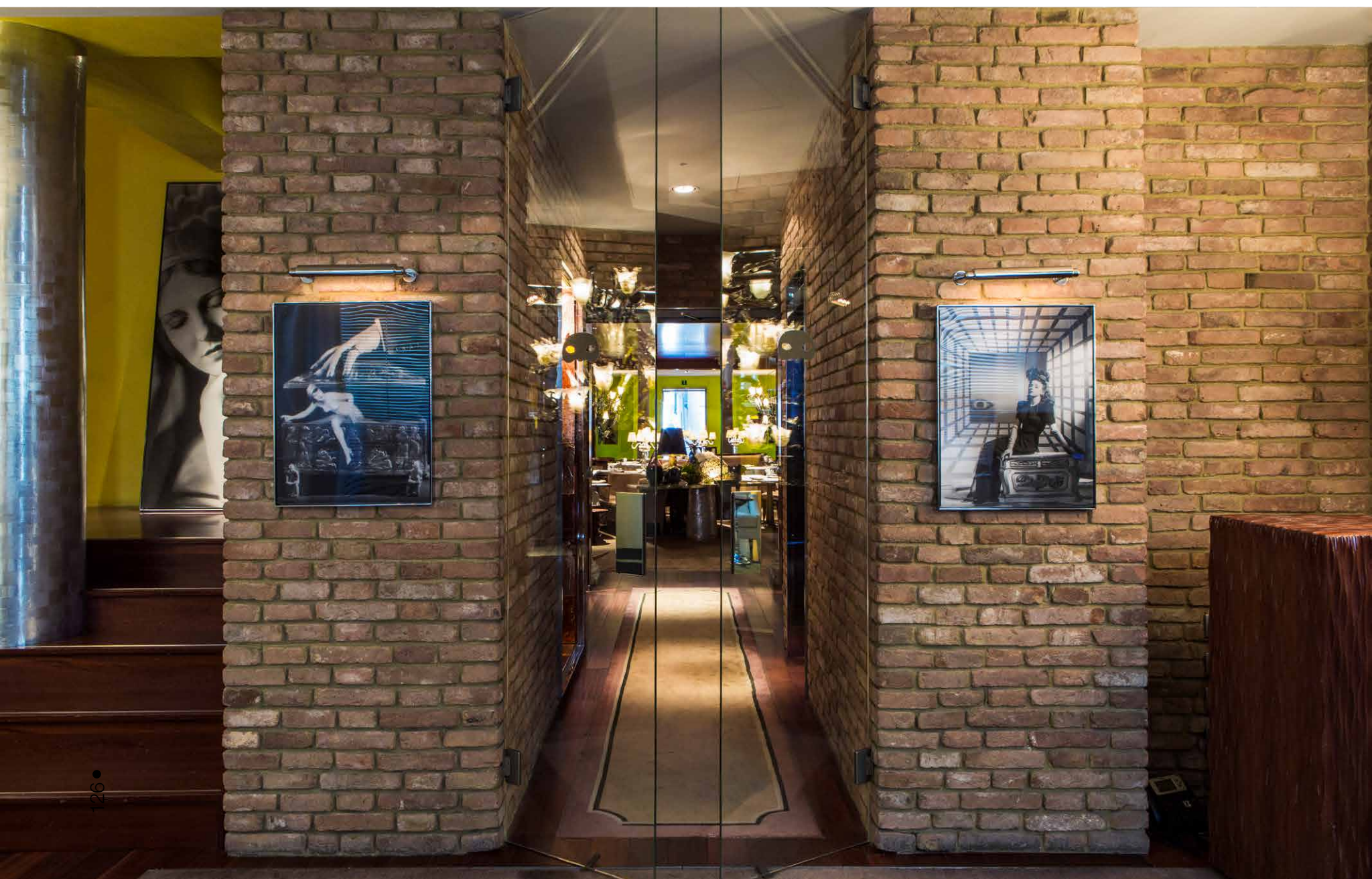
STAY IN OPULENT
BEAUTY AT THE
HOTEL PALAZZINA

Photos: Michele Sirigu | Words: Emma Hersh



This historic and charming building is situated in the heart of Venice, simply oozing with allure, sensuality, and style, is the Hotel Palazzina. This exclusive and original hotel is the only one in 'La Serenissima' as Venice is sometimes known, which is designed by Philippe Starck, the famous French architect, and mega-yacht designer.

This luxury and authentically Venetian hotel has combined light, materials, and style with beauty and elegance to create a location that is pulsating with warmth and beauty, giving the illusion to visitors that it is almost a living entity. Modern style and the incorporation of historic Italian elements and artifacts complete the tasteful ambiance of this unique location.



The relaxed and upscale style of Hotel Palazzina has made it a favorite among Hollywood's elite who come for the now-famous parties held here during the Venice Film Festival and other events. Notable performers like Nicholas Cage, Johnny Depp, Madonna, Al Pacino, Angelina Jolie, and Penelope Cruz have spent time enjoying dancing and dining at this gorgeous hotel.

Grand Canal Entrance

The Hotel Palazzina is located near the famous St Marco Square, once known as 'the Drawing Room of Europe' and sits just behind the Palazzo Grassi art museum. Arriving at the hotel can be done with style and glamour by getting one of Rio Alto's Vaporetto's (water taxis) that will sail you through the waters of Venice right up to the hotel's 16th-century facade, allowing you to disembark directly at the hotel's glamorous entryway, and leading you straight into the buildings welcoming and opulent reception area.

There is no reception desk here, once you step on to the terrazzo flooring of this ancient aristocratic mansion, this hotel favors the personal touch and welcomes each of its guests privately and individually to create a tailor-made and exclusive experience for its visitors.

The attentive staff will cater to your every need, accommodate any special wishes and arrange for your luggage to be transported before personally guiding you through the hallways to your room or suite.

Grand Canal Suites

All of the rooms and suites at the Hotel Palazzina have been created with superior and contemporary charm and are modern, elegant, and bright. Each one contains hallmarks and elements of Philippe Starck's visionary style to create an outstanding guest experience. The bright and sumptuous rooms range include Superior and Deluxe, and a range of elegant Suites all designed with the utmost attention to guest's comfort with the most exclusive materials available.

The Grand Canal Suites are available in Standard and Signature variations, and both offer stunning views across historic Venice and its buildings and overlook the Grand Canal from their private balconies.

While visiting the beautiful city of Venice relax in this spacious, refined accommodation with separate living area, king-size bed, and floor to ceiling windows, which provide unparalleled views of the city. Backlit mirrors and Venetian motifs complement a modern design. Experience Italy at its best while enjoying extraordinary luxury and contemporary charm in this 5-star setting.

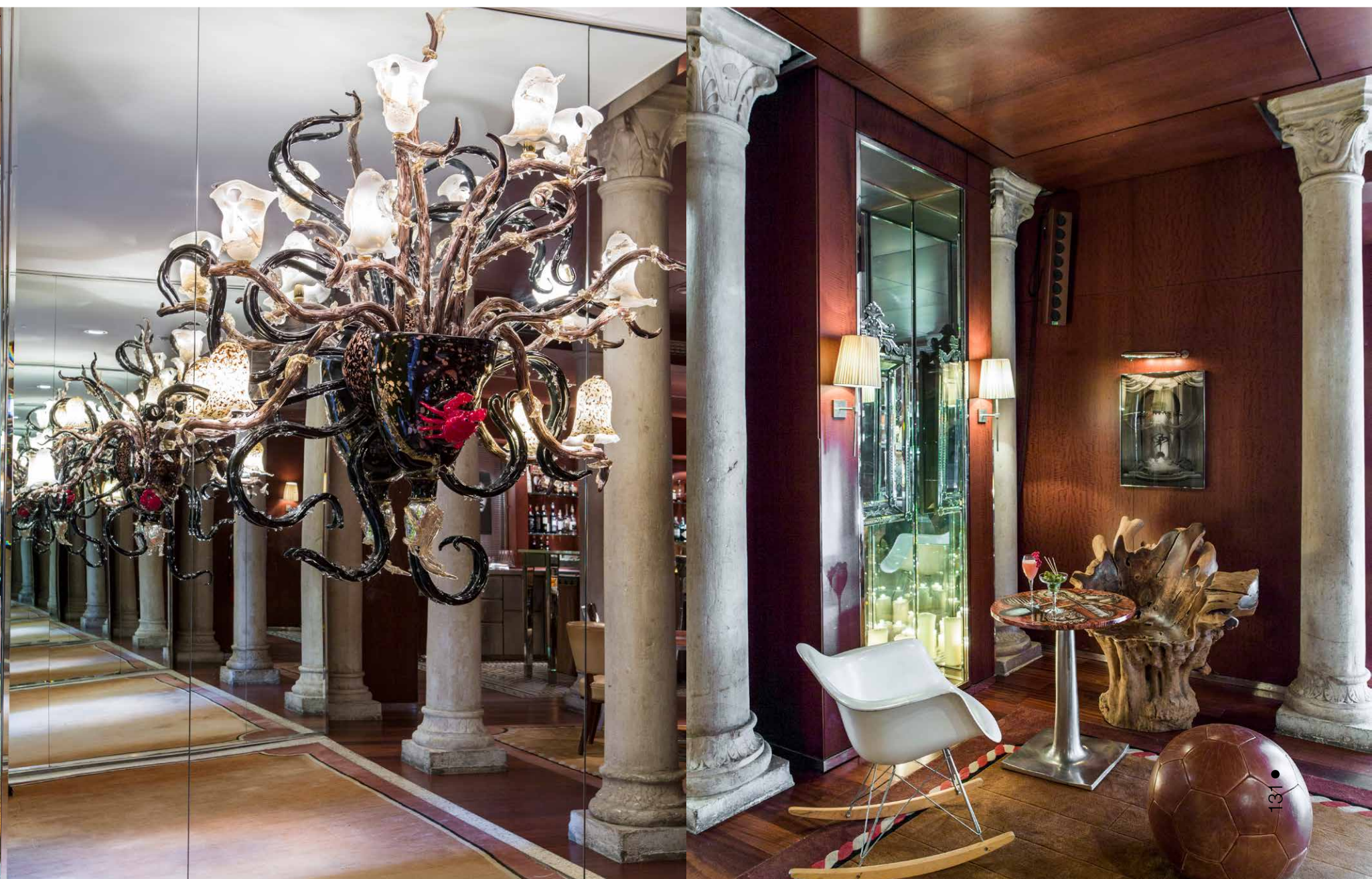
The Design Restaurant

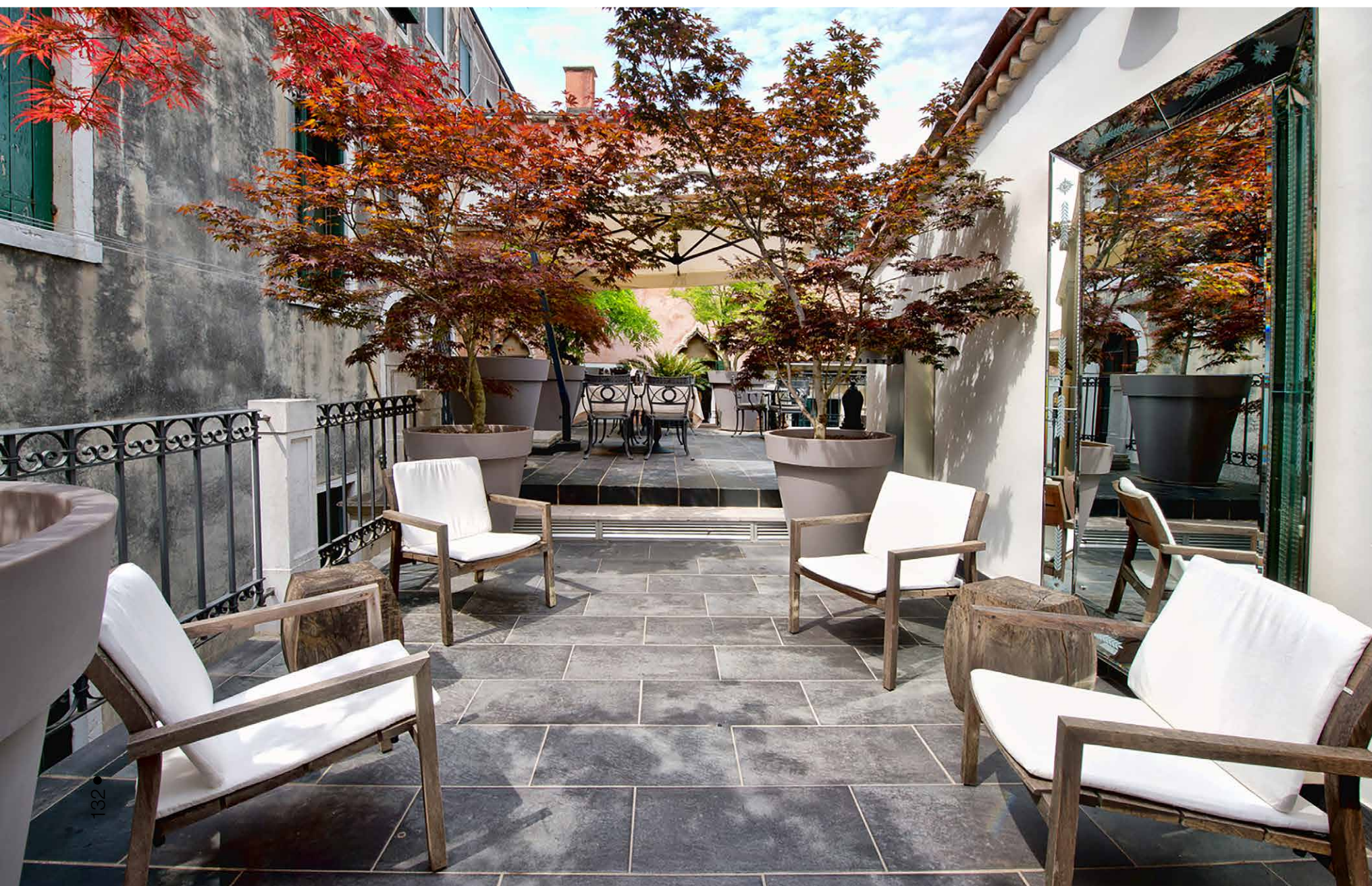
Relax amidst a designer decor, 19th-century columns, and Murano glass chandeliers while you enjoy a gastronomic feast prepared by Hotel Palazzina's expert culinary staff. The open style show kitchen allows guests to view and interact with the head chef while meals are prepared. This fine-dining restaurant attracts guests and locals that come to experience the traditional Italian cuisine that incorporates the city's rich history and culture.

The dining experience at the restaurant is a sensory journey with champagne served as you pass the 7-meter marble counter and sit down to a 5-course menu finely crafted to stimulate the senses. Dishes are presented with a selection of paired wines to perfectly compliment the food, and the warm, sophisticated atmosphere perfectly completes the ensemble.

Savor the intricate and delightful flavors of Italy from a choice of specially created selections and enjoy pairing with a glass of carefully selected wine or one of the champagnes on offer. If a hand-created cocktail is more appealing, then the hotel's expert drinks mixologist will be happy to create one for you.







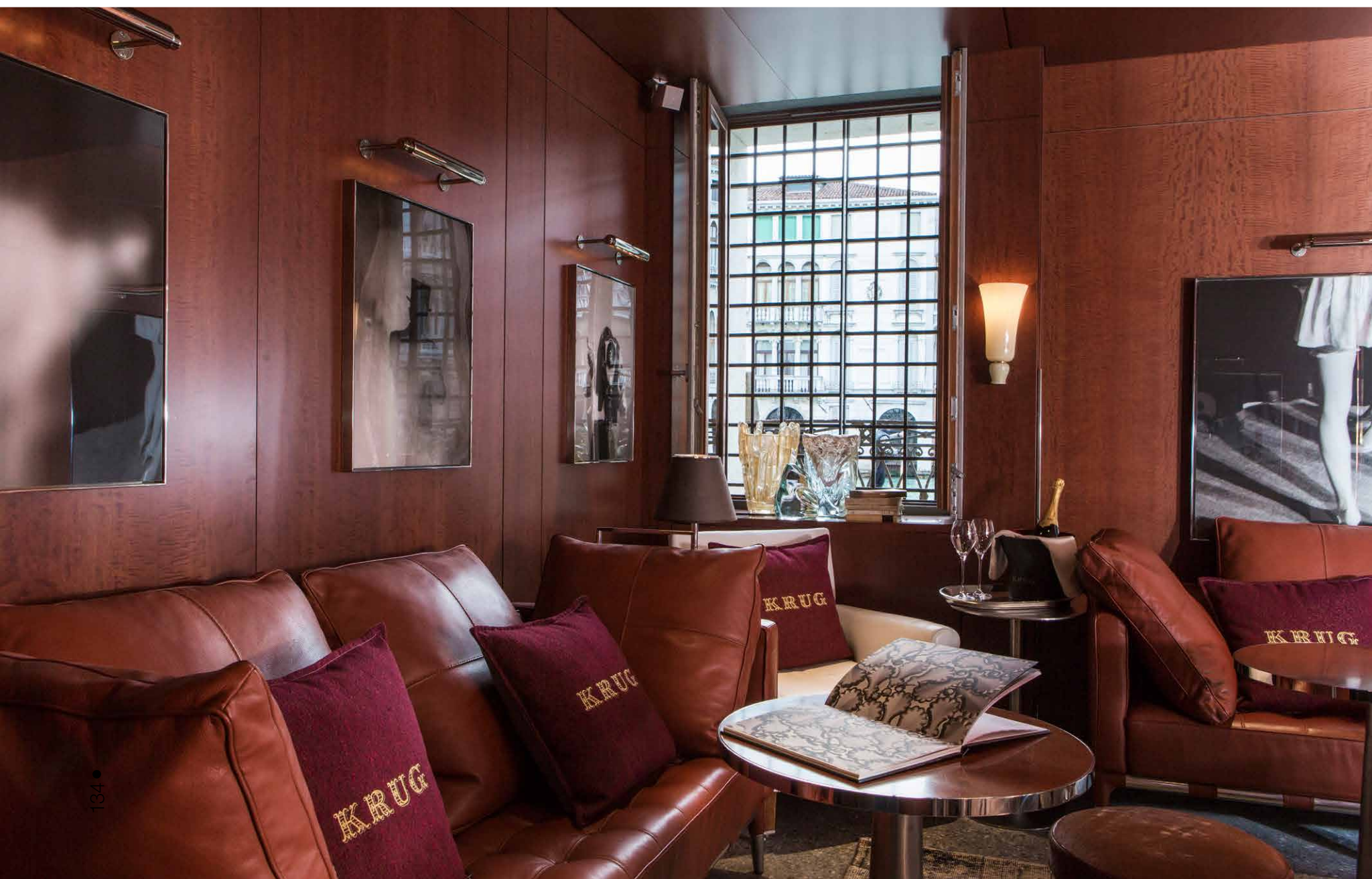
The Terrace Rooftop Garden

An outdoor and elegant terrace carefully styled to offer a feeling of peace, tranquility, and privacy. Relax in the shaded areas provided by large umbrellas and enjoy the greenery of the trees that are all around the terrace area. This is the perfect place to unwind and sip a coffee or a glass of wine while enjoying some of the best views of Venice. Gaze over the rooftops of the city while enjoying this peaceful oasis.

Breakfast, lunch, and brunch selections can be enjoyed here as well as evening dinner, or you can simply unwind on this relaxing patio while listening to the sounds of the tasteful and refined music selection playing quietly in the background.

The Terrace can be used as an extension of The Restaurant, so if you prefer to savor your meals 'Al Fresco' then you can enjoy one of the menu delights in the open and tranquil surroundings. Summer evenings are perfect for a romantic outdoor dining experience and the hundreds of twinkling lights visible across the city, only serve to further enhance the mood.

The Hotel Palazzina will offer you spectacular and luxurious surroundings and amenities and allow you to experience spectacular views of Venice. Gaze at the passing boats that glide down the Grand Canal and see the passing sights of the city as you dwell in opulent surroundings that are sure to promise a delightful and elegant stay. ⊕





A CULINARY VOYAGE AT MONTE-CARLO'S ÔMER

Photos: Ventdautant, Pierre Monetta, ChristianLARIT | Words: Janine Devine





We look upon any opportunity to return to Monte-Carlo with delight; the phenomenal food, wine and service, and just the right amount of glamour and flash make it a great getaway, even if one is there for work. Work and leisure make an ideal combination at Monaco's annual Yacht Show. And so we found ourselves here again this September with ÔMER, Alain Ducasse's second Monegasque restaurant that opened back in January this year, a "must do" on our list as well as the venue for our annual dinner with industry leaders at the Show.

Conceived and christened with a wry nod to its surroundings 'at the sea' (au mer) and the origin of some of the core components of its menu, to our minds, ÔMER was also a bow to Homer and his classic epic, The Odyssey. Its menu is epically adventurous in its quest to be all things Mediterranean, per its tagline: Toute la Méditerranée. This innovative restaurant had been generating quite positive buzz, and it definitely warranted all the interest. NAVIS has always enjoyed a superb relationship with the Hôtel de Paris and, indeed, all the properties of Soci t  des Bains de Mer (SBM). Although we felt the pressure to compete with last year's exceptional venue, Le Grill, its remarkable service, exceptional cuisine and dramatic ocean views 8 floors above in the same hotel, we again returned to the extraordinary food and beverage outlets at SBM as is our habit – and why gamble with perfection? And ÔMER became a most worthy contender.

ÔMER's sleek interior is as far removed from the belle epoque opulence of the H tel de Paris as possible. Located in the newer Rotonde extension to the hotel, it has a welcoming and more zen-like ambience to its interior than any of the other venues at Hotel de Paris. Intimate and serene, ÔMER is surrounded by the hotel's lush, tree-filled garden, and accented by the ever-present salty reminder of the sea just beyond the landscaped view. Its sleek yet plush furniture and decor, awash in highly polished wood moldings, allude to the superyachts that famously moor here and in other marinas along the coast of the Mediterranean. From the bowed walls and alcoves, wooden floors, and jaw-dropping Wine Circle, expertly executed from the design of Pierre-Yves Rochon, it was clear as we entered the venue, that its ambience would add inspiration to the evening.

An innovative culinary take on the Mediterranean

Once sous chef under Ducasse at the triple Michelin-starred Le Louis XV, Chef Patrick Laine (previously at the afore-mentioned Le Grill) was tapped to take the helm of ÔMER and navigate the challenges of a seasonally changing menu. Selections for both dinners and luncheons reflect the variety of both land and sea produce across the Mediterranean region, with a particular focus on the North African region, alongside touches of southern Europe: essentially, tapas or mezze, with hints of Morocco (mint, lemon and figs), Lebanon (pine nuts, vermicelli) and Turkey (lamb, aubergines).

The starter menu offered our small group just the appropriate amount of variety to encourage convivial sharing without being overwhelmed with too many choices. The entrees which followed are anything but traditional classics. Dina Nikolau, the ebullient Greek chef that Ducasse had mentored, contributed some of the Greek references throughout the menu, including a moussaka redolent in mint and feta cream and a baklava which made a most welcome appearance at dessert. Ducasse has long been

celebrated for his love of -- and inspirational takes on -- the humbler varieties of produce from the land and sea, across the many cultures and ethnicities of the Mediterranean's vast region: and ÔMER deftly weaves this thread throughout the menu. For a few of the group, it was a delight to simply opt for several of the mezze, avoiding the usual over-abundance of entrée portions. The menu continued to build its story like an old-fashioned adventure novel, and although most of the options were surprisingly healthy, there were also subtle clues that over-indulgent dishes might be lurking close-by. No matter the menu selections, the nuanced flavors gracefully overrode anything one would consider too decadent. Friends who had dined at ÔMER since its opening had encouraged us to try the octopus, aubergines, and the lemon dessert. It turns out these educated recommendations were spot-on but, alas, there is a limit to how much one can sample. There is a bit of liberation in not being bound by the rigidity of set courses in a meal, and that is part of ÔMER's charm. Each of our group happily remarked on the myriad surprises of the menu before us, and as we looked over the wine selections, and afterward, when we were served. No pauses, no lulls in the conversation. Provocative and inspiring, collaborative, you might even say.

I would be remiss not to remark on the incredible service. In all its glamour and style, Monte-Carlo has been known for its remarkable service levels and here, too, ÔMER certainly does not disappoint. The Ducasse brand, with the consulting, education, hospitality divisions surrounding its culinary base, continues to raise the bar yet another level. The serving staff were all friendly, thoughtful, and knowledgeable, without being either automatic or too familiar. They succeeded at being attentive without imposing and unobtrusive without verging on scarcity. Our particular praise goes to the sommelier that evening who effortlessly aided in pairing wines for the admittedly very diverse selection of plates.

Cuisine and venue both ideal for sharing

As our small group of esteemed guests wrapped up for the evening, it was reassuring that the slightly more relaxed, but no less formal feeling to this Ducasse venue, had inspired dynamic interaction among the influential yacht owners at our table. The discussions that touched on so many relevant topics for this industry evolved naturally, following the evolution of the dinner itself. This is just one of Ducasse's many talents, and it is superbly evident at ÔMER, where the communal and welcoming ambience and the emergence of each new culinary delight kept the group energized. Amiable discussions naturally progressed from the industry's dramatic growth to the impact of that growth on the environment. As the meal continued, the emergence of new international markets fueling the growth of luxury yachting were considered, along with strategies on the evolution of same and potential future scenarios.

With ÔMER's innovative menu, overall ambience and committed, caring service, the restaurant makes an ideal venue for motivating business luncheons as well as provocative, animated dinners such as the one we enjoyed that night. As it is pitched, ÔMER's offering is food that is "meant to be shared" and so, too, diners here share conviviality and passionate ideas, fueled by the originality of its inspired menu. As Ducasse himself has said, "a great idea is nothing if it is not perfectly executed," and this is ÔMER: perfectly executed. ☺





NAVIS™

US Best Superyacht Design Magazine

Subscribe
Today

Visit:

www.navisyachts.com/store/

Call:

+1 786 406 6111





Quality and
Performance
are at the heart
of every sail
we make.

www.greatcirclesails.com
+1 617 271 0712