



NAVIS™

YACHTS DESIGN & LIFESTYLE

Issue 59 | April/May'21

Southern Wind 30m

MORGANA

www.navisyachts.com



Damen Yachting 77m

La Datcha

Baltic Yachts 20m

Baltic 67

Rossinavi 52 m

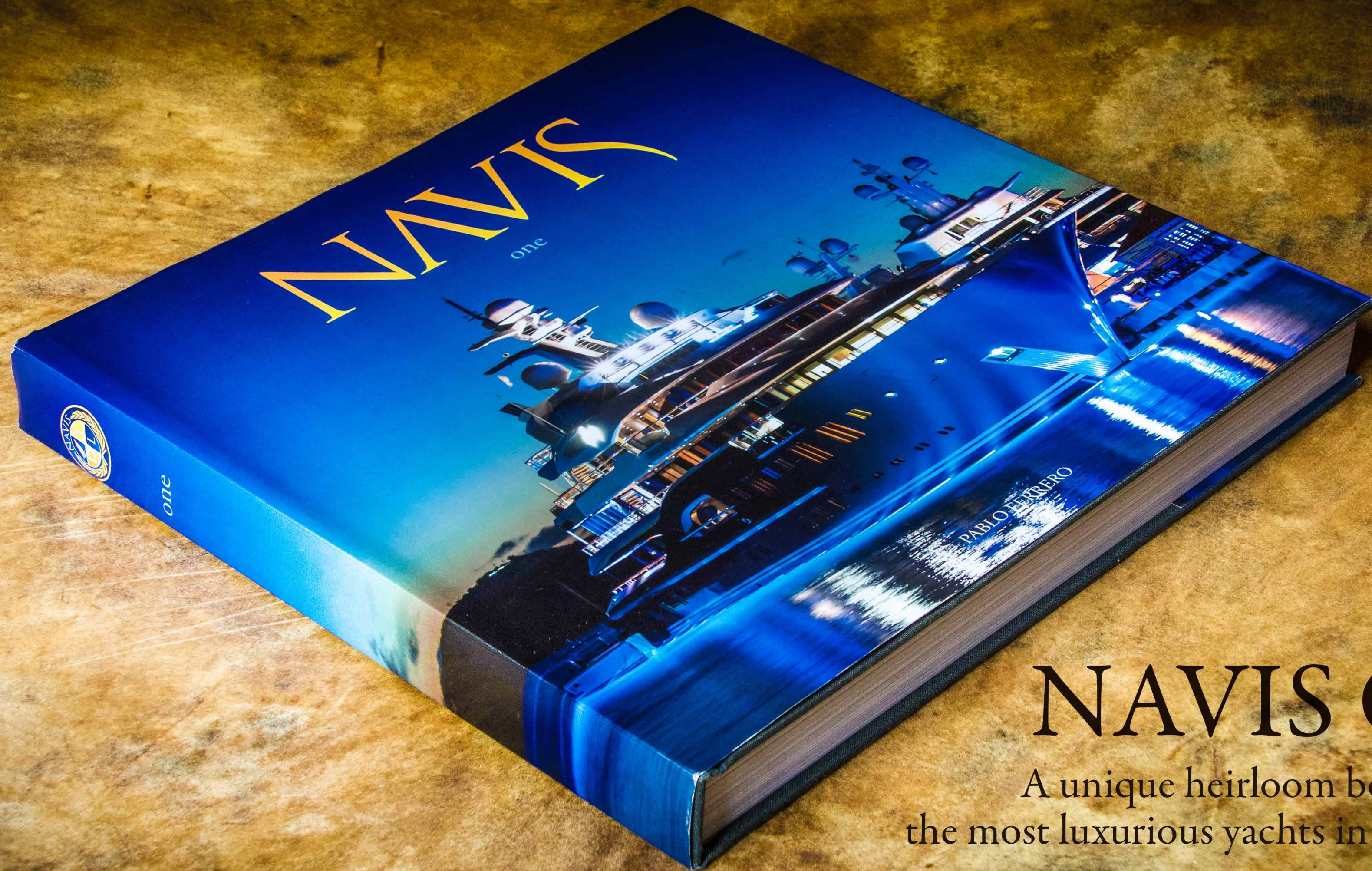
Florentia

Luxury Lifestyle

Kokomo Private Island
Yachting Spring Collection

Supercars

Lamborghini Huracán STO



NAVIS One

A unique heirloom book about
the most luxurious yachts in the world

Order your copies: +1 786 406 6111 - enquiries@navisyachts.com - www.navisyachts.com/store

An impeccable, 240-page presentation,
every chapter covers, in meticulous detail,
the most amazing superyachts
cruising the waters today.





A perfect mix of Motor Yachts and Sailing Yachts transports the reader into a world of adventure, passion and luxury that few have the privilege to experience.

NAVIS One is an exceptional book that will be cherished for years, not only for its fascinating reading, but also for its value as a design resource.

Order your copies: +1 786 406 6111 - enquiries@navisyachts.com - www.navisyachts.com/store



La Datcha



Performance Cruiser



Bolide

Contents

News	10
Damen Yachting 77m La Datcha	15
Baltic Yachts 20m Performance Cruiser	37
Rossinavi 52 m Florentia	55
Southern Wind Shipyard 30m Morgana	77
Lamborghini Huracán STO	95
YOUR PARADISE AWAITS Kokomo	105
Helly Hansen/Gill Marine/MUSTO Clothing Sailing Spring Collection	121

*For queries or information requests about the yachts in this issue contact: enquiries@navisyachts.com



Florentia



Kokomo

STAFF

Year 9 - Number 59
April - May 2021

Editor-In-Chief, Director:
Pablo Ferrero

Editorial Assistant:
María Donadio

Contributors:
Janine Devine, Emma Hersh, K.L. Turner, Brian
Hancock Jorge Arcuri

Design:
Gabriel Parra

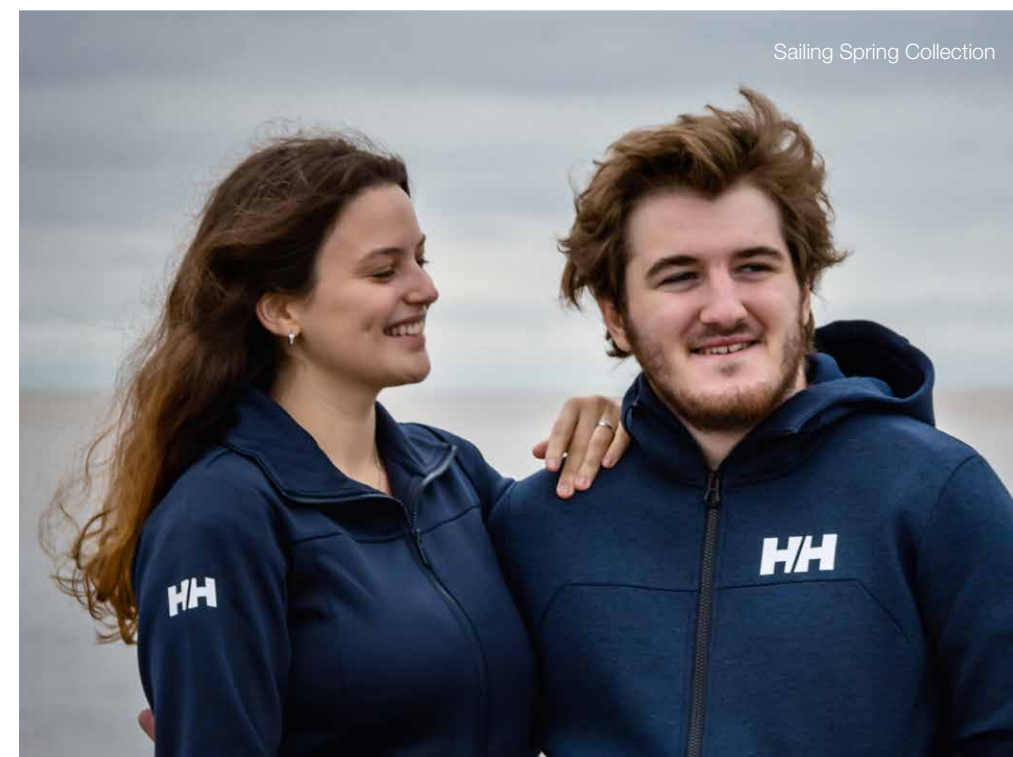
Cover Image:
Jean-Marie LIOT / Prysmian Group

Media Photography:
Damen Yachting Media, Jesús Renedo, Eva-Stina Kjellman,
Michele Chirolli, Southern Wind Shipyard Media, Lean Design
GmbH, Danielle Harle, Lisa Michele Burns, Mark Lane, Helly
Hansen Media, Gill Marine Media, MUSTO Clothing, Pablo Ferrero

Advertising: advertising@navisyachts.com
Letters/Comments: contact@navisyachts.com
General Enquiries: info@navisyachts.com
Subscription Enquiries: contact@navisyachts.com
<http://www.navisyachts.com/store>
Website: www.navisyachts.com

Navis Yachts is published by **Flat World Communication LLC**.
Copyright Flat World Communication LLC. ISSN 2160-7966. All rights
reserved. Reproduction in whole or in part without prior written permission
from the publisher is strictly prohibited. Great care has been taken
throughout the magazine to be accurate, but the publisher cannot accept
any responsibility for any errors or omissions which might occur. Although
every care is taken with manuscripts and photographs submitted.

Navis ISSN 2160-7958 (Print)
Navis ISSN 2160-7966 (Online)
Navis Yachts is a bimonthly publication:
Flat World Communication LLC
201 S. Biscayne Blvd., 28th Fl, Miami, Florida, 33131
t. +1 (305) 913 1337



Sailing Spring Collection



Huracan STO



Riva 50 Metri 'Fifty' launched

This is the magnificent new Riva 50 Metri M/Y 'Fifty' that has been launched. Inspired by the legendary yacht designer Carl Riva's work on the celebrated Atlantic and Caravelle motor yachts of the 60s and 70s, the Fifty will now ride the waves in style.

She is the first 50 meters superyacht from Riva and was launched at their shipyard in Ancona, Italy, in a private ceremony. The yacht has a maximum beam of nine meters to deliver an outstanding cruising experience.

She reflects Riva's aesthetic hallmarks and classy styling with lots of sophistication with an exterior consisting of steel, mahogany, and glass.

'Glorious page in Riva's history'

The chief executive of Ferretti Group, Alberto Galassi, said: "Once upon a time, the expression 'written on water' was used to describe actions that have a fleeting impact. But what we have written on the water is another unforgettable and glorious page in Riva's history. "My recommendation for those in search of great emotions is to take a look at this new Riva and the breath-taking way she shines with style, legend, and innovation."

Continue reading @ NAVISyachts.com

Royal Huisman Project Phi

This is the excellent PHI - the world's longest motor yacht below 500GT that has been built and launched by Royal Huisman. She is 58.5 meters (192ft) in length and the fast displacement aluminum motor yacht has, the yacht maker says, been a 'great challenge' to engineer and build. Cor D. Rover is responsible for PHI's exterior design and interior layout, and he says: "Rather than just building a large yacht on a so-called shipyard 'platform' to enjoy the pleasures of being at sea, the owner of PHI wanted to build a yacht with a profound underlying story, a deep-rooted knowledge that runs through all aspects of the yacht, from her exterior appearance to her internal experience."



Inspired by nature, the owner's penthouse apartment on the upper deck is focused on the galaxy.

Owner's desire for a highly advanced yacht

The main deck reflects an organic and visual message, and the PHI reflects the owner's desire for a technical and highly advanced yacht that will set new standards. And even though the PHI is the world's longest sub-500 GT motor yacht, there has been no compromise on quality or standards.

She also uses Van Oossanen's XL fast-displacement hull form to deliver fuel efficiencies. PHI also offers more exterior and interior entertainment areas on the aft deck than other conventional yacht designs. And, instead of having a typical 'wedding cake' silhouette, she has a sleek and appealing low profile.

Indeed, another 'first' is found on the pool deck with the patented DEPP swimming pool created by Cor D. Rover. The pool uses a minimum volume of freshwater since the body of water will remain in the pool to be heated and treated overnight when not being used. It works by sealing the pool into a tank - at the touch of button - so the water does not have to be pumped out and in again.

Continue reading @ NAVISyachts.com



The Columbus Sport has been launched

The impressive 50m Columbus Sport M/Y K2 has been launched and has undertaken her first sea trials. Built at Columbus Yachts' Ancona shipyard in Italy, she features sleek lines and a vertical bow.

The naval architecture sees the hull being engineered to guarantee a high level of comfort, regardless of rough sea conditions. Indeed, the yacht builders say the Columbus Sport will become an 'icon of sportiness and elegance' and has been developed from their 40-meter yachts.

Columbus Yachts is a subdivision of Palumbo Superyachts, and they have worked with Hydro Tec to conjure up the design.

Luca Dini Design & Architecture

There are three decks, and K2's interior design and the external lines have been created by Luca Dini Design & Architecture. The design effortlessly blends sophistication and sportiness in an innovative package.

There is also lots of natural light with an expanse of glazed surfaces, plus there's an on-deck Jacuzzi.

Continue reading @ NAVISyachts.com

Feadship Project 817

This is the ground-breaking Feadship Project 817 - an impressive eco-friendly creation. She has been created for an experienced yachtsman and was built in Feadship's Kaag shipyard in the Netherlands.

The owner's aim was to reduce the environmental impact of the custom-built 94-metre (308-ft) yacht. The owner has enthusiastically chartered nearly every Feadship creation in recent years and has utilized that knowledge with this project.

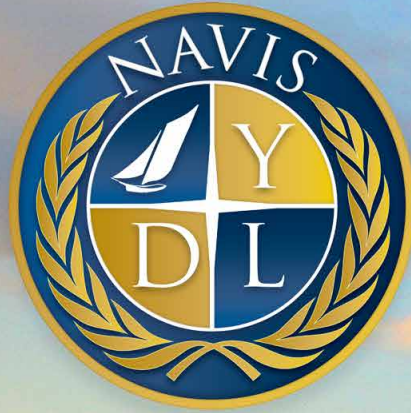
Delivering the same environmental impact

The superyacht builders were tasked with delivering the same environmental impact of the owner's previous Feadship yacht, despite being 32 meters (105ft) shorter.

The designers have installed an advanced hybrid propulsion system to achieve this very ambitious goal. This enables Project 817 to travel at 12 knots comfortably using diesel-electric power. Her top speed is 20 knts when in diesel mode. The yacht also uses diesel particulate filters and Tier III catalytic converters to reduce its environmental impact.

Continue reading @ NAVISyachts.com





NAVIS

YACHT DESIGN & LIFESTYLE

YACHT SALES DIVISION

We help you fulfill your dream

t: +1 305 913 1337 / e: enquiries@navisyachts.com





Damen Yachting 77m
LA DATCHA

Photos: Damen Yachting Media | Words: Janine Devine



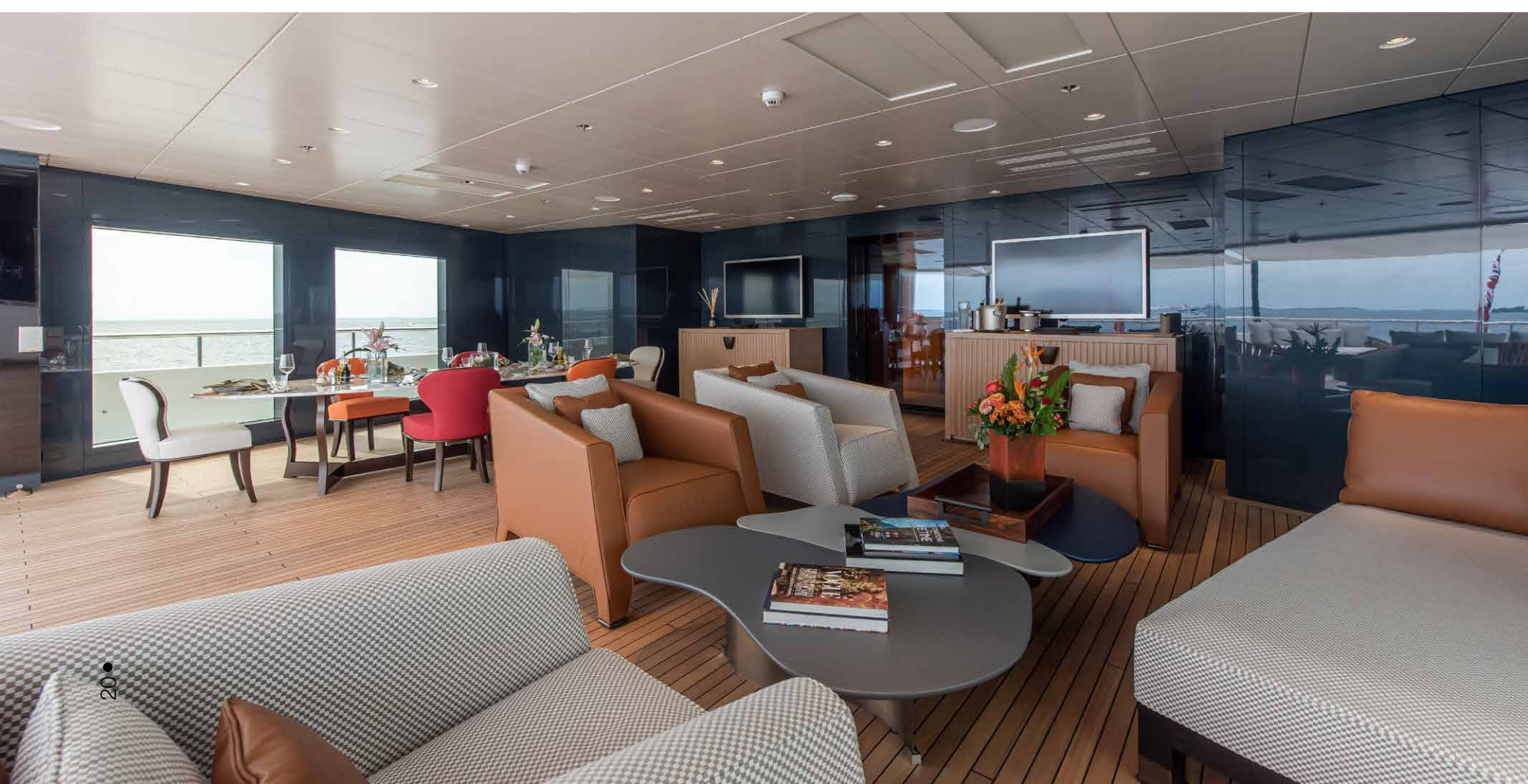


“Work hard, play harder.” A personal motto took on an entirely new riff when Damen Yachting handed the La Datcha 77 over to its expectant owner. Even before that, the colossal ship has been the subject of untold media coverage, from the moment it left Damen’s Galati shipyard along the Danube, to its first glimpse near Monte Carlo after her handover, and a recent siting in the Maldives en route through its two-year global tour. No doubt you’ve seen the articles and videos. La Datcha is all bold and aggressive, brutish even. But she ticks all the right boxes for super motoryacht that could be a home anywhere in the world, raising eyebrows and dropping mouths, as she basks in the glow of the Mediterranean sun or out in the spectacular blue of the Caribbean. And that’s precisely where her owner did not wish to cruise.

With 95% of the world’s water routes remaining unexplored, he was looking for something to bring his family to vast and uncharted waters that sleek white superyachts had not gone before. The journey before this journey took him to Dutch shipbuilder Damen Yachting in 2017, originally intending to purchase the Amels 199 part of the haute yachting side of the brand. The series, touted as the perfect balance between custom and semi-custom, delivers fully realized superyacht visions to demanding owners within a shorter period of time. That was until said prospective owner saw the SeaXplorer class. The eventual 77 meter fully custom version is the first in the brand’s recently updated expedition line, which originally debuted in 2015, and can range from 55 to 105 meters, with a gross tonnage between 1100-7,000.

And the idea for La Datcha took hold and evolved, an ultimate crossover between luxury superyacht and expedition cruiser. And with no better builder than the crossover of this brand, the supreme craftsmanship of an Amels yacht with the commercial shipbuilding prowess of Damen whose Dutch yards had constructed both tugs as well as offshore rigs. Ultimately La Datcha’s purpose was for passengers and crew to stay safe as well as comfortable in extended isolation. In her case, comfort and opulence would go hand in hand on board.

As with all successful rearing of children, it takes a village. Fellow Dutch design firm, Azure Yachts, continued its long collaboration with Amels and Damen Yachting to oversee the exterior architecture, designing a distinctive masculine exterior that means nothing but business. She bears a reassuringly commanding presence with her length and impressive height from the waterline. UK-based EYOS Expeditions, the multi-faceted luxury curator/facilitator of one-of-a-kind luxury yacht experiences, also played a part in La Datcha’s early planning stages. In fact, because of their expertise in the logistics of making complex things happen easily in remote areas, EYOS was consulted on the complete SeaXpedition series. Their input on the new build lends a level of security for the owner as well as guests and clients. There’s that distinctive floating band along the profile, curvy overhangs on both transom and deck that provide protection from both the sea and the weather, while permitting the observation of rare wildlife, spectacular scenery, or the escapades of fellow passengers.



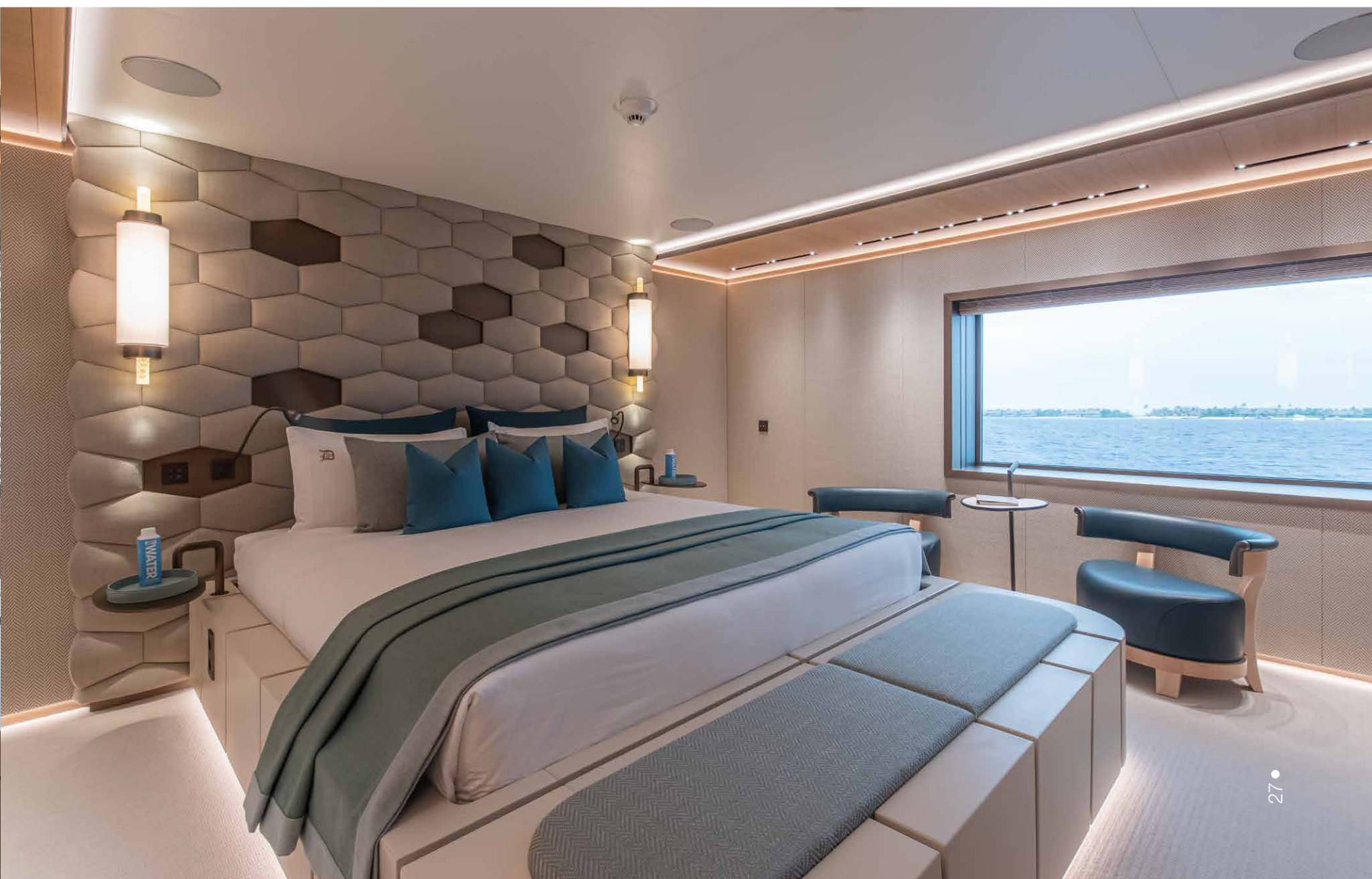
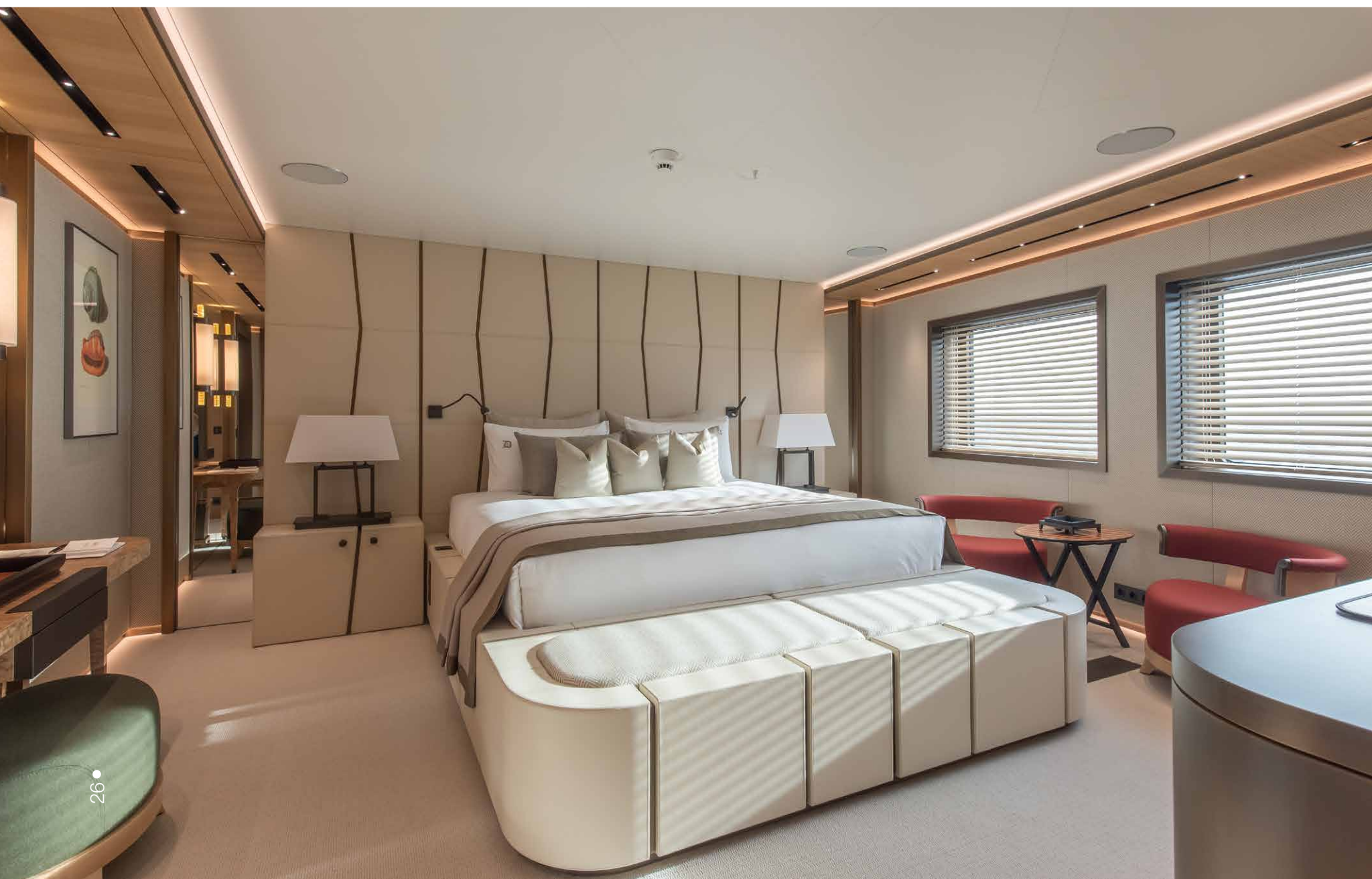


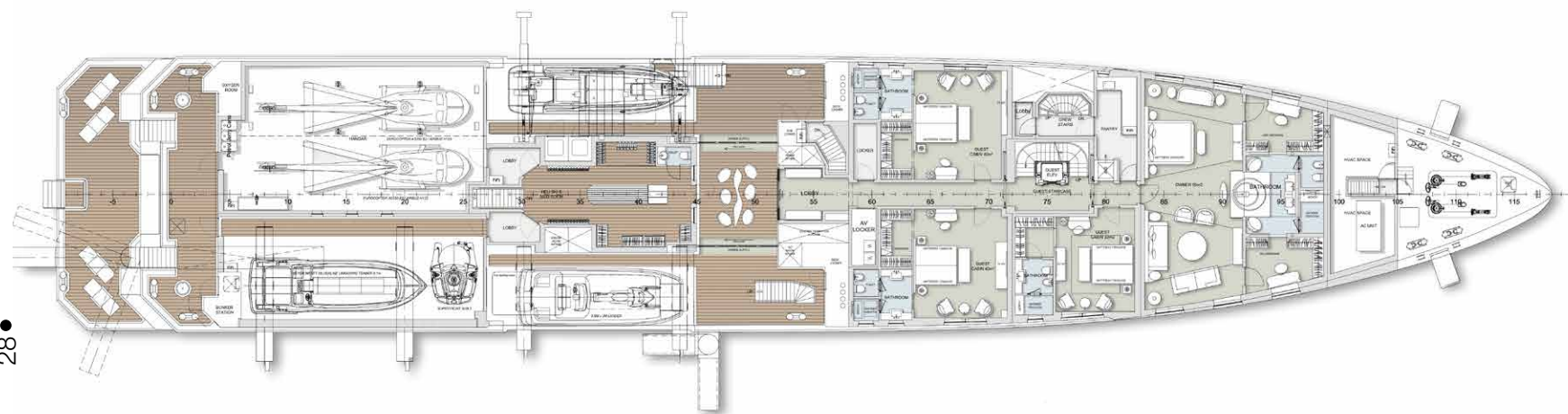
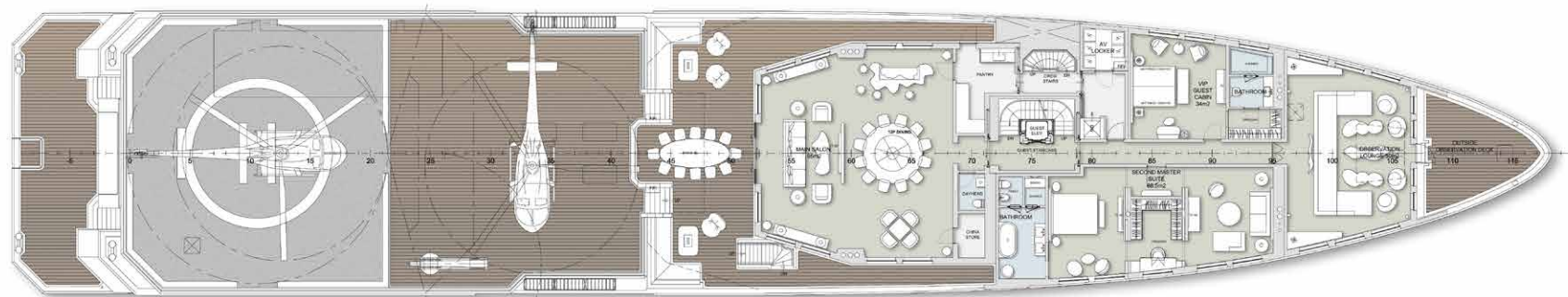
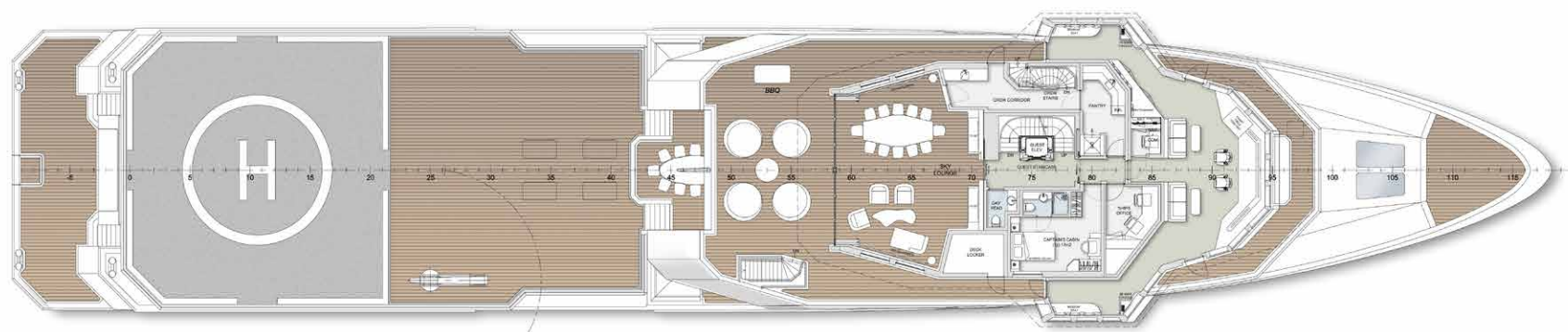
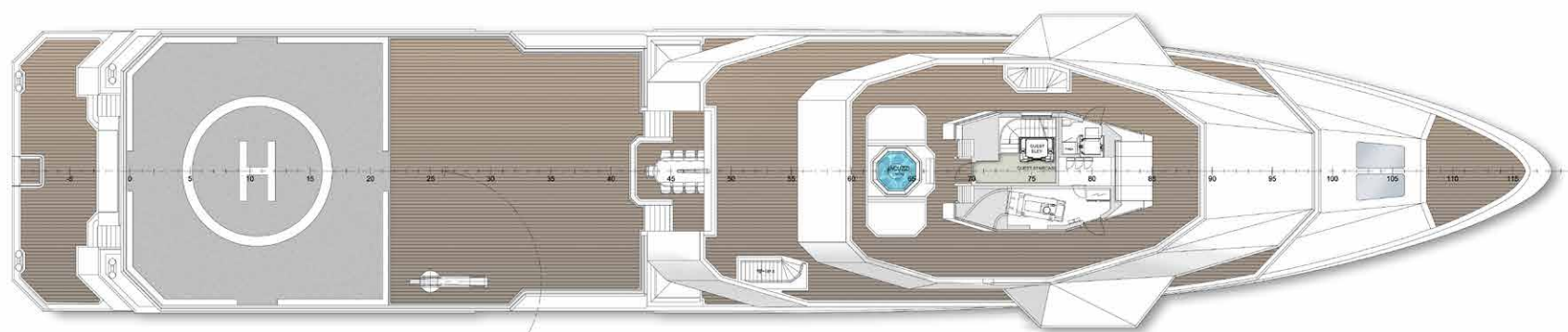
La Luxe

Interior design on La Datcha was by St. Petersburg-based Vasily Shprits, who in earlier projects with the same owner had overseen interiors for the land-based products in the La Datcha portfolio. "Every house has a story, welcome to mine," states the site. At each of these homes, opulence knows few bounds. The collection boasts a five-suite ski chalet perched at the highest point of Europe's highest ski resort (Val Thorens), another five-suite chalet in Courchevel, much-desired 1850, the highest point of Europe's largest ski resort. There's a ten-bedroom oceanside villa in Cabo San Lucas, and a ten-bedroom restored 1930's palazzo in Forte Dei Marmi with its own private beach on the Tyrrhenian sea, a mere 30 meters away. A multi-dwelling compound on the Volga River delta in Astrakhan designed for more tranquil pursuits, like spear-fishing, completes the portfolio. Each of these come fully staffed, including masseuses, drivers, chefs, and carefully-curated wine cellars that would put any of the Michelin-starred venues in the surrounding metro areas like Geneva, Lyon, or Florence to shame. As well, each comes with a fabulous abundance of toys in addition to rooms dedicated solely to playing billiards, smoking cigars, screening films, or analyzing one's golf swing.

And here, within that powerful ice-classed hull, you'll find the same touch. According to the press release by Damen Yachting, Schprits was tasked with interior design concept of "fussy but simple," "warm and natural," yet "chic and unusual." And so, woods, granites, bronzes, onyx, leathers, and crystals were imaginatively used to construct another world away from the rarified outdoor ones on itineraries. There are two owner's suites: a larger one on the Main Deck and the second on the Upper Deck. The primarily owner's cabin boasts spectacular views, which can be enjoyed while soaking in the suite's glass bathtub. It is easily connected to the Upper Deck's VIP cabin to create a duplex apartment for families. All cabins are en suite and boast walk-in closets, including the three remaining guest suites on the Main Deck. There's a glass elevator that transports guests between the four decks of living areas. And then there are the viewing areas, with exceptionally plush seating to enjoy the expanse of ever-changing vistas. The floor-to-ceiling windows easily retract for warmer climates, and all guests can enjoy that owner's cabin bathtub-view from the Jacuzzi on the Upper Deck.







The Tech and The Specs

But with La Datcha, glam was one component of the operation. Damen heeded the calls to take her further. Powered by two MTU engines, La Datcha delivers 12 knots cruising speed, with a max speed up to 14 knots and a range of 6,000 nautical miles. That full displacement hull provides excellent strength as well as stability while blue water cruising or navigating closer to rugged, unpredictable shores, yet with comfort for passengers as well as crew with its low noise and vibration levels. Her 14-meter beam ensures maximum space potential of both living and storage space in her 2,517 gross tonnages. Her 3.8-meter draft ensures a much more stable ride even in the rougher conditions that navigating polar regions presents.

At the time La Datcha first leapt from a mere gleam in her owner's eye to a computerized draft on a screen, the International Maritime Organization's Polar Code regulations had just been revised. Damen Yachting quickly drew from its past commercial experience with ice-breakers and coast-guard vessels to ensure her ice-classed hull was reinforced to polar-code compliance. Her hull is certified Class 1C and is able to safely withstand ice up to 16 inches thick. Her comprehensive stabilization system is retractable, as well, to avoid being trapped by errant ice floes or submerged objects. Along with that tremendous space came strategies to maximize self-sufficiency beyond mere cold storage for food, water, and fuel, enabling cruising autonomy for up to an astounding 40 days.

A comprehensive multi-tiered refuse management system, including wastewater and greywater tanks, glass crushers, garbage compactors, and cold storage, allows for many cruising days without discharging. These were all integrated to seamlessly maximize efficiency without any impact on comfort and living space. The possibilities for this ship and her future journeys are seemingly endless.

Within her 6 decks, La Datcha can accommodate 12 passengers. A full retinue of staff and a crew number 25, including the Captain. For those 12 guests, there are nearly 9,700 square feet of exterior decking to take in the jaw-dropping views. The mast Crows Nest offers a 360° vantage point. But that forward Observation Lounge on the Upper Deck permits 270° of splendid panorama in utter luxurious comfort. On the Lower Deck, there are a total of 13 cabins, all ensuite, to house the crew and expedition staff; a sizeable mess/lounge, a full-service galley. There is also a hospital facility adjacent to staff's quarters which can also be used for quarantine, with separate air-conditioning in addition to waste containment. This is a requirement according to La Datcha's classification. Aft of midships, the Toy Store (more on that later), and the heli fuel room whose 10 square meter tank carries enough jet fuel for 40 hours of flight time or the equivalent of 5,000 nautical miles to handle activities, excursions ashore, or even emergencies. There is a decompression tank aft, a full-service dive center with separate wet-suit change room, showers, a comprehensive gym facility with an adjacent massage cabin. Two rooms are housing the indoor Jacuzzi, the steam room, the sauna, a hammam, and an ice bath.

Toys for warmer climate or arctic ice?

Aboard La Datcha, your wishes are entirely covered whether you are cruising near the Equator or navigating polar ice. For the owner's original intent of chartering the megayacht, there are toys and then there are requirements. On the port side, there is the custom 9.26-meter Fassmer rescue boat/luxury limousine tender. On the starboard side, a slightly bigger – at 9.5-meters -- Insider Yachts' beachlander. The two 2 Airbus H125 helicopters that also come with La Datcha are required for charters that include heli-skiing. Here she comes completely equipped for everything needed to maintain them. Essentially, she is an entirely self-sufficient floating airfield with her certified helipads, meaning either or both craft can land while the ship is in motion. She also has room for a double hangar with a lift system for both crafts on the Main Deck, in the chance the owner wanted to clear the pad space to host a reception or other gathering. La Datcha also comes equipped with a 3-person Triton 1650 submersible, finished in that same La Datcha bronze. There are several tenders including 2 RIBs as well as one for dive support, 4 waverunners, 2 snowmobiles, and 30 or so bikes. There's nothing like a man who has a vision and knows exactly what he wants to do and then gets everyone on board to get it done.

A heady mix of bravado, wanton indulgence, and calculated foresight, the heroically-sized La Datcha can boldly go where no uber-luxe tour, even a bespoke one, has ventured before. And for three-quarters of a million euros to charter price for a week, she makes for a rather unique means of raising financing for research projects, like seed vaults or reef restoration. Who wouldn't donate millions to a museum or leading research facility to view scientific work in progress amidst the world's unmatched beauty and untouched splendor? It's natural if you are restoring and re-building Polynesian coral reefs, watching whales breaching amidst Greenland's shrinking glaciers, or viewing a volcanic eruption light up a night sky around Iceland.

The La Datcha brand clearly references the second country residences so popular today throughout the former Soviet Union. In Old Russian, the word derives from its original meaning as a gift, or what Tsars bestow upon faithful landholders. La Datcha herself is a gift, an homage to discovery and exploration, to pushing all boundaries, physically, professionally, and mentally. For her owner, it was constructed to fit several Journeys of a Lifetime into one single lifetime. Not only that but to share the experience with others who hold the same mindset.

Safety merged with comfort and more than a bit of style. A little over a month ago, before this writing, Damen Yachting announced La Datcha had been nominated with 4 other yachts in the category of Outstanding Exterior Motor Yacht Design for 2021. She is available for charter through the owner's brand portfolio. New York-based Edmiston Yachts is authorized to provide charter services as well. Want one of your own? Damen Yachting is on the bandwagon of the SeaXplorer 77, the new Mar de Cortes may just be available, but you can commence with your own version. The SeaXplorer now comes with two interior design options. The first is styled by the inimitable Carlos Torre of Monaco Yacht Temptation; the other is a very organic scheme penned by Jim Dixon of Winch Design. A yacht for all seasons permitting men of all seasons to play that much harder. Adrenaline junkies rejoice. ⊕





La Datcha



FWC
Luxury Products Marketing

MIAMI - t: +1 305 913 1337 - @: info@FWCadvertising.com - www.FWCadvertising.com



Baltic Yachts 20m

PERFORMANCE CRUISER

Photos: Jesús Renedo, Eva-Stina Kjellman | Words: Emma Hersh



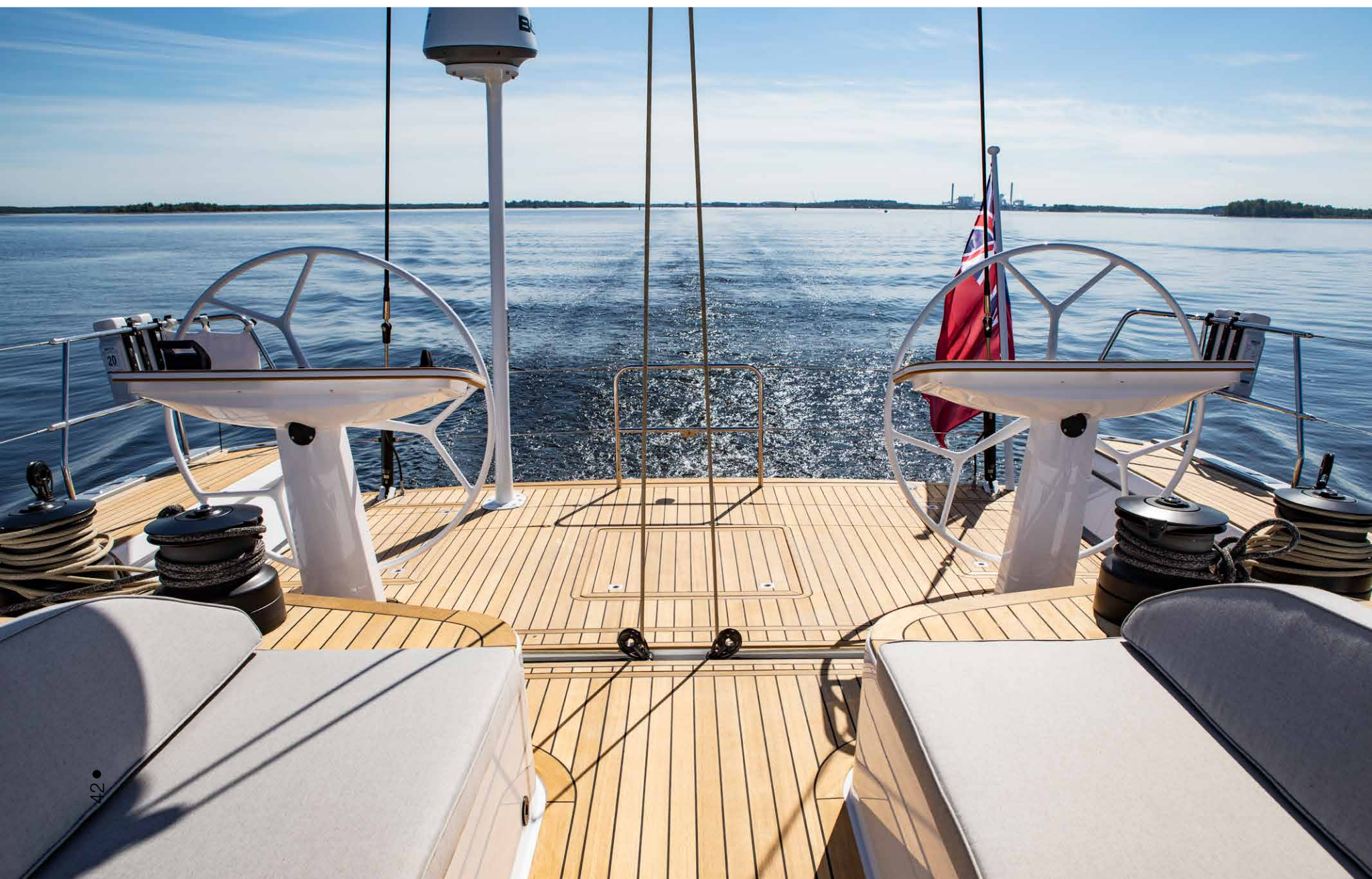


Cutting edge design combined with fast, easy sailing and high-performance capability makes Baltic 67 an attractive long-distance cruising yacht that's perfect for competitive events. Carbon fiber engineering and sandwich construction give the yacht a relatively light structure that can be handled by a limited crew. Light and responsive with dual steering wheels, access to essential equipment like the powered trimming winches has been thoughtfully considered and are within easy reach. A telescopic lifting keel provides shallow water access, while a long-running beam and foam cores give Baltic 67 a well-balanced, light structure with a stable feel.

Construction of the vessel is based on a standard hull but offers extensive customization options for deck and interior design. Selections like single line slab or in-boom reefing are the owner's choice and are complemented by a non-overlapping working jib and bow thruster. With moderate consumption while on auto-pilot and good directional stability, Baltic 67's performance capabilities will provide a leading-edge for competitive sailors.

Precision engineering and carbon construction techniques honed from Baltic's 44 years of yacht building experience have created a vessel that provides not only performance advantages but has stunning attention to detail. Deck options feature open or closed transoms and a selection of layouts to maximize deck space or create comfortable seating areas. Hatches, windows, and storage lockers can be placed in versatile arrangements to suit. Swing out, or permanent anchor stowage may be selected along with an optional integral bowsprit.

Interior design can be styled traditionally and comfortably or for a more streamlined and modern appearance. Floor plans can be based around a versatile 3 or 4 cabin layout. The 4 cabin design features a master cabin forward with twin and single cabins each side of the keel casing. For the 4 cabin layout, an additional twin cabin is positioned to the starboard aft with shower facilities. For those who prefer a 3 cabin layout, this version removes the keel side single cabin, allowing larger head and shower areas to both the master and twin cabin. Each design features an ample seating area in the main saloon and a linear galley to the rear portside.



Personalization of Baltic 67's interior can be developed with a wide range of woods, finishes, and fabrics to suit the owner's taste. Sophistication and elegance can be achieved with a palette of tasteful color options that may be combined to create contemporary urban or soft traditional characteristics. For the more traditional seaman, rounded edges and fiddled worktops can be utilized for a more practical yet updated look. The more modern styling choice resembles a city apartment with harder lines, recessed features, and suspended lighting. Ample passage berths and safety features like recessed stowage allows for safe movement below deck while sailing in any conditions or during long-distance cruising.

The saloon offers ample seating and dining space in an open plan arrangement that can be designed depending on the interior layout. Seating spaces vary slightly, but both feature U-shaped settee areas with additional seating opposite. Both designs wrap around a large dining table. One layout option features a forward-facing dedicated chart table, while the other favors more space dedicated to seating and includes a centerline bench to the far side of the dining table for additional places. Views of the ocean can be seen from the long side windows, and overhead hatches create a light and airy aspect to the saloon.

Cabins are bright and comfortable with the generously proportioned owner's suite featuring a desk/vanity unit and a relaxed seating space from a starboard side settee. Natural light pours in from the windows running along both the port and starboard sides of the cabin. The en-suite head and shower are also on the starboard side and features a glass shower stall and mirrored overhead units along with heated towel rail. Guest cabins are single and twin, with 2 or 3 cabins available depending on the chosen floor plan. Twin berths have easy access to en-suite head and shower facilities, and all rooms have ample wardrobe space available.

The galley is modern and functional, with ample room for meal preparation. A contemporary design features all the appliances needed, and the entire area is brightly lit from the overhead hatches, side windows, and recessed lighting. A wealth of storage space has been incorporated along the upper and lower sections of the galley walls for easy access to dining and cooking supplies.

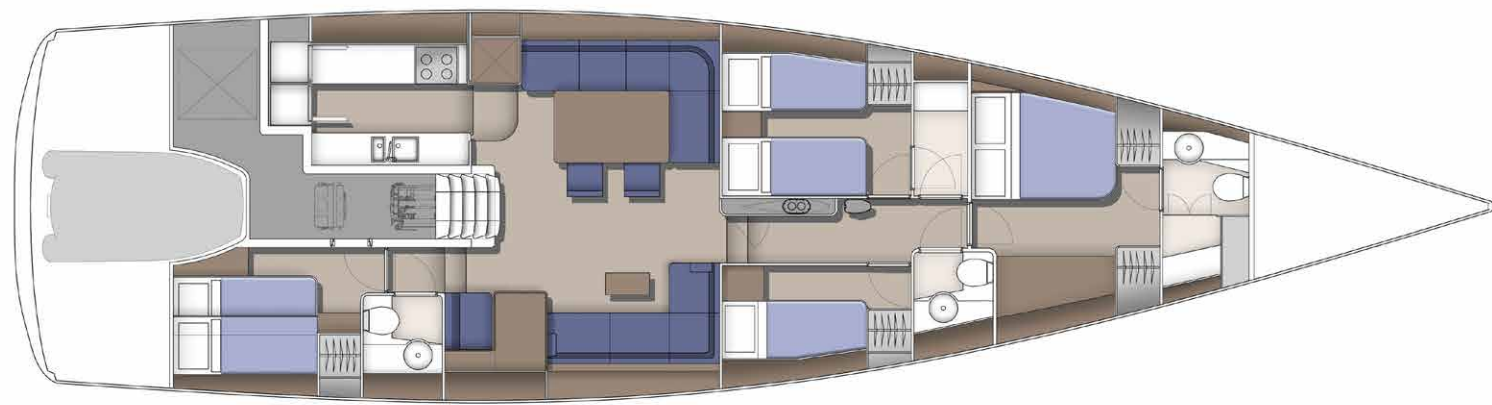




GBR
6701 M



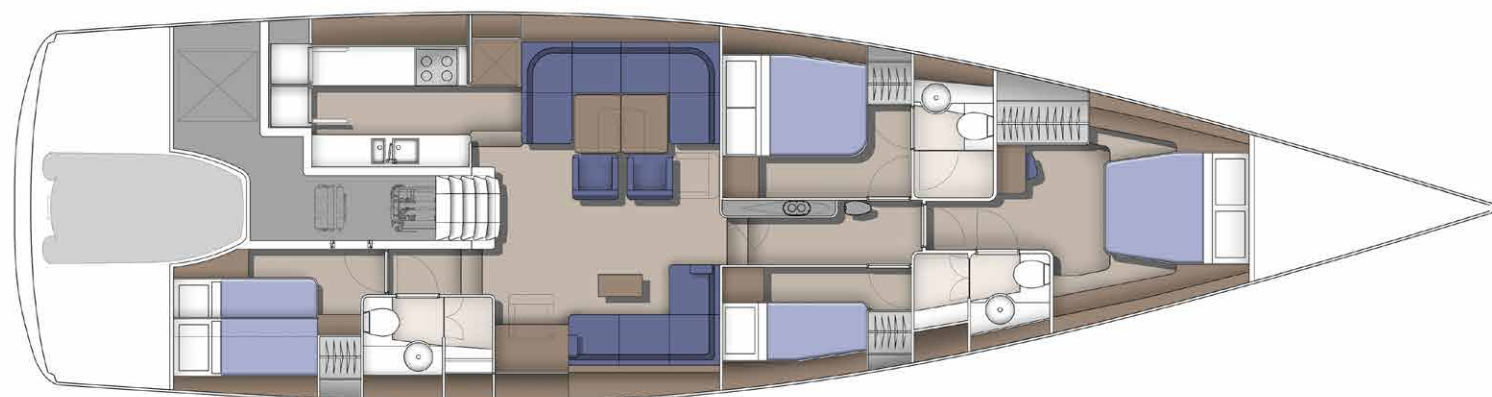
INTERIOR ARRANGEMENT A



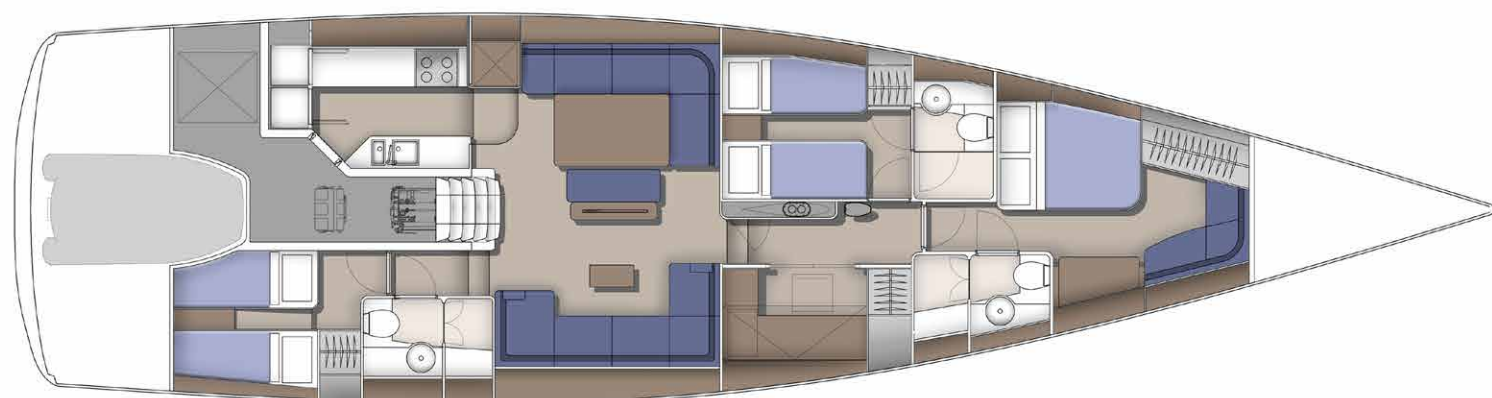
INTERIOR ARRANGEMENT B



INTERIOR ARRANGEMENT C



INTERIOR ARRANGEMENT D



Baltic 67 uses a uniform hull that allows new owners to design the yacht to their specifications while drastically reducing build time. The use of carbon fiber engineering and the choice of layouts and flexible deck options creates an irresistible blend of performance and style. Weight-saving components and the lightweight styling of Baltic 67 have created an easy-to-handle performance yacht geared to competitive sailing, and that is manageable even with a short-handed crew.

The latest commission of Baltic 67 scheduled for spring 2022 has been designed to the owner's requirements for short-handed sailing, and features remote options to control the engine and sail trim from a handheld console. The wireless capability extends to bow and stern thrusters for fully remote maneuverability. Push-button operation is powered by solar energy, and an extensive array of solar panels will provide the power for the yacht's controls and other power needs. Virtual design capabilities have been employed for development meetings and provide realistic computer-generated imagery that allows owners to 'walk' through the yacht during construction phases and make necessary changes. Baltic's 67 newest construction promises a modern open plan arrangement and loft-style design. ⊕

Specifications

» Naval architect:	Judel/Vrolijk & co
» Styling:	Design Unlimited
» Shipyard:	Baltic Yachts
» L.O.A.	20.52 m
» D.W.L.	19.20 m
» Beam	5.45 m
» Draft	3.90 m
» Displacement	24,400 kg
» Ballast	9,000 kg

Preliminary Sail Area

» Upwind	257 m ²
» Downwind	530 m ²





GBR
701M

MANYELETI



Rossinavi 52 m

FLORENTIA

Photos: Michele Chirotti | Words: KL Turner





A Jewel Only Nature Could Inspire

The sea has begun to write its journeys upon Florentia's hull, employing both poetry and passion. Inspired by nature, designed with experience, and executed with precision, this 52-meter Rossinavi yacht has captured even the ocean's ephemeral attention. Launched on June 13 of 2020, Florentia's elements of style, with a gentle flow sculpted in steel, establish the yacht as a modern classic.

No one puts Florentia's features into perspective as clearly as Rossinavi CEO Federico Rossi: "A yacht characterized by romantic lines for a timeless elegance that features refined interiors and generous spaces. Florentia is a vessel in which Functionality and efficiency are a testament to style."

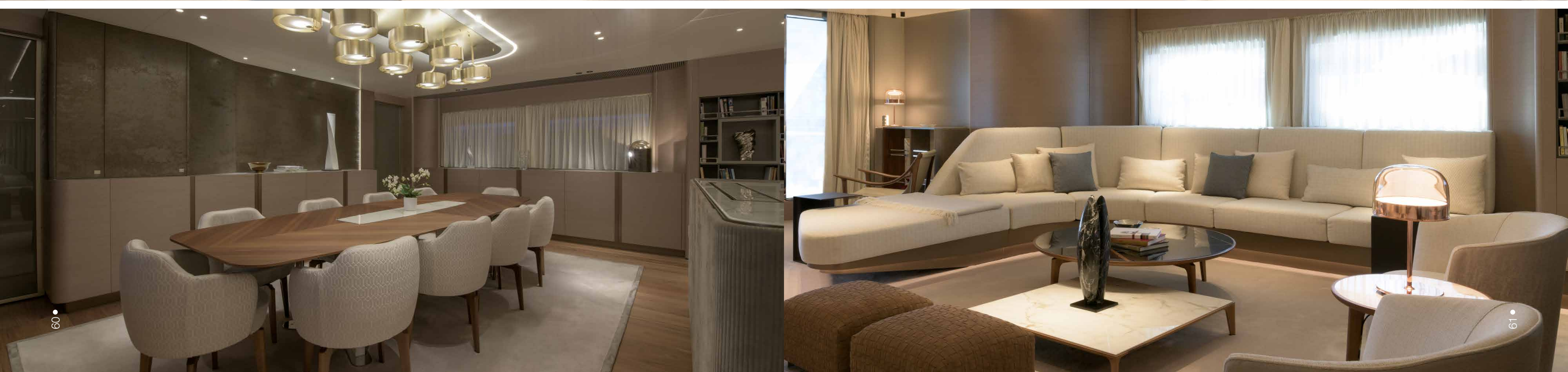
The Specifications

Launched from the Rossinavi yard in Pisa, Italy, Florentia is a full displacement, fully custom steel hull yacht carrying an aluminum superstructure. At 810 GT, her 52-meter length is balanced with a 10.35-meter beam, requiring a shallow draft of just 2.70 meters.

The yacht was entirely constructed by the hand of Rossinavi, using their many in-house talents. Studio Vafiadis in Rome contributed the exterior lines. Arrabito Naval Architects attended to the mechanical, electrical, and safety engineering details. Interiors were crafted by the creative team at A++, with Carlo Colombo leading the way.

Carrying as many as 12 guests in 6 cabins and accommodations for 11 crew members permit peerless service to every guest on board. Enjoying the spaces spanning four decks and remarkable interior ceiling heights reaching 2.35 meters. Stefano Vafiadis notes, "Florentia is the most representative example of a fully bespoke superyacht made in Italy. This is a boat entirely designed and built around the owner and his needs. We've been challenged with the difficult brief to create a timeless gem where classic features and shapes meet modern details."

Two CAT 3512E, 1901 kW at 1800 rpm engines enable a maximum speed of 17 knots. At 13.5 knots, Florentia is capable of a globetrotting, 6500 nm range.



Rossinavi: The Luxury of Experience

Bespoke yachts from Rossinavi require focused attention to each and every detail, finding solutions where none previously existed. Through experimentation, research, and dedication, Rossinavi has consistently applied standards of excellence, establishing the name as an industry leader. Propelling the brand from Fratelli Rossi's high-quality fishing boat hulls of 1980 to the groundbreaking 70-meter luxury yachts in build today, Officine Rossinavi's philosophy has not wavered: whatever we do, it must be done well. Rossinavi continues to be the only family-owned/operated superyacht company in Italy.

Studio Vafiadis

Studio Vafiadis & Associati is the award-winning workspace of Georges Vafiadis and his son, Stefano Inglese Vafiadis, dovetailing passions for the sea and for yacht design. Studying in Rome, Stefan graduated with a degree in Architecture, earning the ShowBoats Design award as "Young Designer of the Year" in 2013.

Carlo Colombo/A++

Milan, Italy-based design firm A++, founded and headed by Carlo Colombo, works in a variety of design spaces in ten countries around the globe. After graduating from Milan's Polytechnic University, Colombo quickly rose to international prominence, designing for prestigious luxury brands like Bentley Home, Bugatti Home, Penta, Poliform, Giorgetti, and Artemide. Strengthened by working in markets around the world, the work coming out of A++ is not only head-turning and beautiful, but respects climate change and the human factor.

At The Heart of Florentia's

Reaching out to upper and lower decks from the main, each step of Florentia's staircase moves through a delightful play of light, shape, and texture. Silvered circular lamps artfully illuminate the spiral, accentuating the wooden handrail trimmed in chrome on the upper, while a polished silver sweep leads to the lower. Posh and dense, a pale pewter cloud of carpeting hushes stairwell activity.







The Fly Deck

High atop the yacht, Florentia wears privacy as her crown. Forward, a VIP cabin with central bed and paired wardrobes opens through curved glass doors to a secluded balcony overlooking the bow. Two generous sunpads nestle into the corners, with enough deck space to complete morning yoga or Tai Chi. Just aft, an oversize shower backs up to the head of the bed.

Opposite the shower, dual vessel sinks have wall-mounted fixtures beneath a large mirrored vanity area. Aft of the bath, a VIP lounge invites a good read on the gently curved sofa to port or in the Eames-style cushioned lounge chair. A simple stair to starboard makes it easy to move from the fly-deck to the upper-deck.

The lounge looks aft to an outdoor Jacuzzi deck with seashell sunpad following the curve of the deck. A wet bar with fridge to port offers easy service to guests enjoying the VIP space. An outdoor deck stair offers access to the upper deck.

The Upper Deck

Fully forward on the upper deck to the fore of the wheelhouse, tender storage and EG room access are located for a clear view of operations, both of the yacht and tender launch.

The wheelhouse, cockpit, and captain's cabin are well-positioned, overlooking the bow of the deck and accessible via the upper deck. Exhibiting the epitome of luxury and function, technology is king in these spaces. The en suite captain's cabin to starboard and the crew office to port follow just aft, with a service stair and crew pantry to port further aft.

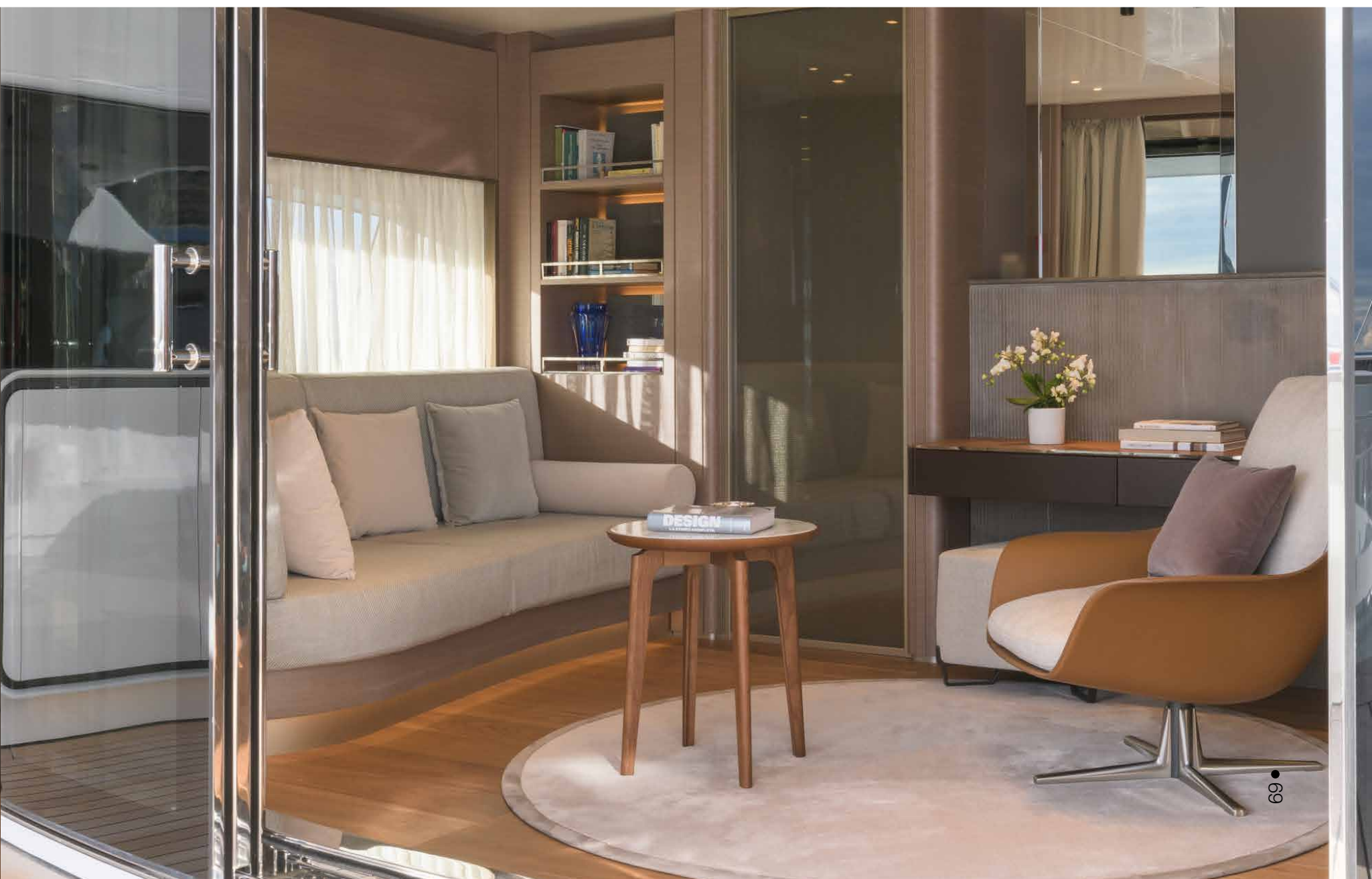
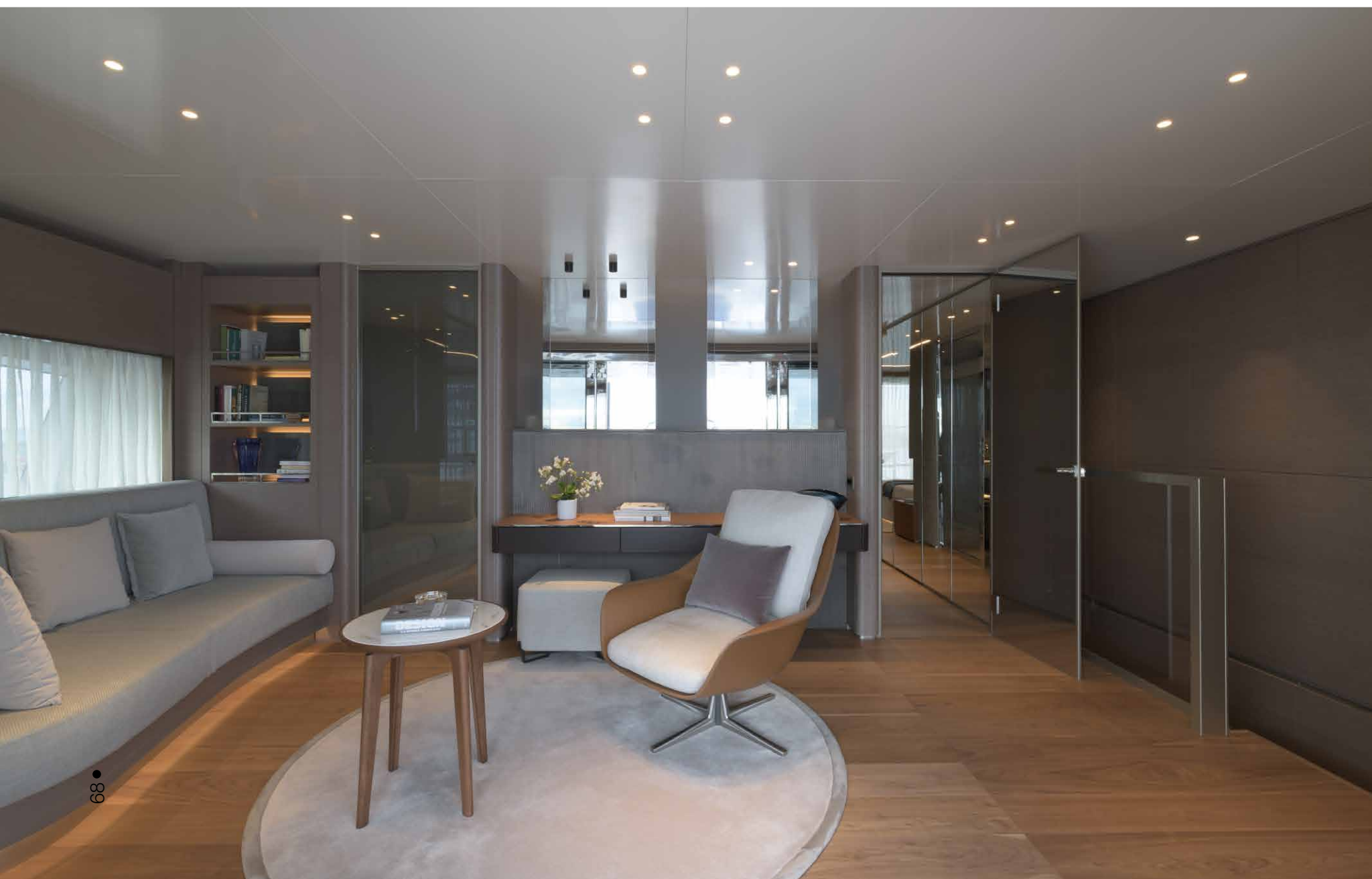
Tucked in aft of the captain's cabin, the upper deck lobby winds its glorious way through the staircase. A day bath is discretely located forward, alongside the stair.

Tracing aft of the lobby, the upper deck saloon opens to a versatile space that is open, airy, and well-appointed with creature comforts. The forward wall of the space displays a bar area, framed by storage to port. A central settee with seating both on the forward and aft sides, serves to separate the bar from the main saloon while providing seating to both areas. A gently curved white sofa is the main event, joined by two companion chairs, ottomans, and multiple tables offering a variety of heights. The space doubles as a cinema.

Aft of the saloon, an outdoor dining space with oval table entertains 12 guests, protected beneath the fly deck overhang. A wet bar to starboard makes service quick and easy. An outdoor stair to starboard accesses the main deck.

Fully aft, a curved U-shape sofa rounds the stern, with tables and four posh armchairs completing the deck.





The Main Deck

Fully forward on the main deck, the owner's suite sprawls to the central stair lobby to starboard and to the galley and crew pantry to port. The central bed is backed by a curved wall, following its footprint on the ceiling with muted lighting. Above the bed, a circular mirrored sculpture reflects subtle light from every direction, then traces its outline in hushed LED lighting.

Dual baths positioned forward of the sleeping area are positioned to port and starboard, centrally connected with an oversize shower. Each bath features clean lines of marble with drop-in sinks, privacy toilet and bidet behind doors, and large mirrored areas.

A folding balcony to starboard sits aft of the bath, while a sofa with bookshelves aligns to port. Couture walk-in closets on both port and starboard are mirrored, with built-in storage drawers and natural light from windows.

Aft of the owner's suite, a storage area and day bath are located to starboard, while the full size, well-equipped galley and crew pantry, with food lift, wine cellar, icemaker, two dishwashers, five-burner stove, full-size oven, and ample refrigeration sit to port. The beautiful main lobby amidships leads to a gallery forward and opens to the formal dining area aft.

An ample oval seating twelve guests is beautifully lit by silvered circles, outlined with subtle LED linear lighting. Cabinetry divides the main saloon's dining area, leading to a large, open set of sofas, armchairs, tables, and ottomans.

Aft of the saloon, an alfresco lounge area welcomes guests through glass sliders. Curved sofas around a circular table invite guests to take in the views while relaxing in the depths of softly upholstered furnishings.

The Lower Deck

Fully forward, crew quarters with cabins, crew mess, laundry, and service stairs are separated from guest areas by a bulkhead.

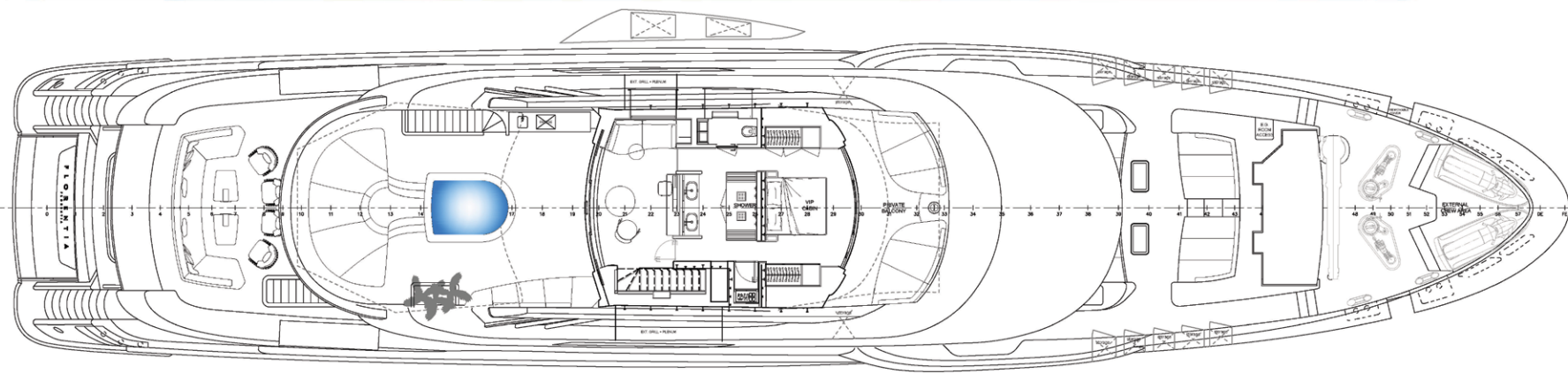
Amidships, the spectacular stair winds down into the lower deck lobby, with guest cabins surrounding the space. Two twin cabins forward with en suite baths and two double cabins aft with en suite baths with vessel sinks are equipped with beautiful furnishings similar to those of the VIP and master cabins.

Fully aft, the beach club spans the stern, with a day bath and storage space to starboard and forward wall. Forward of the beach club, a tender garage is separated by bulkheads, allowing the tender to launch from a starboard side door.

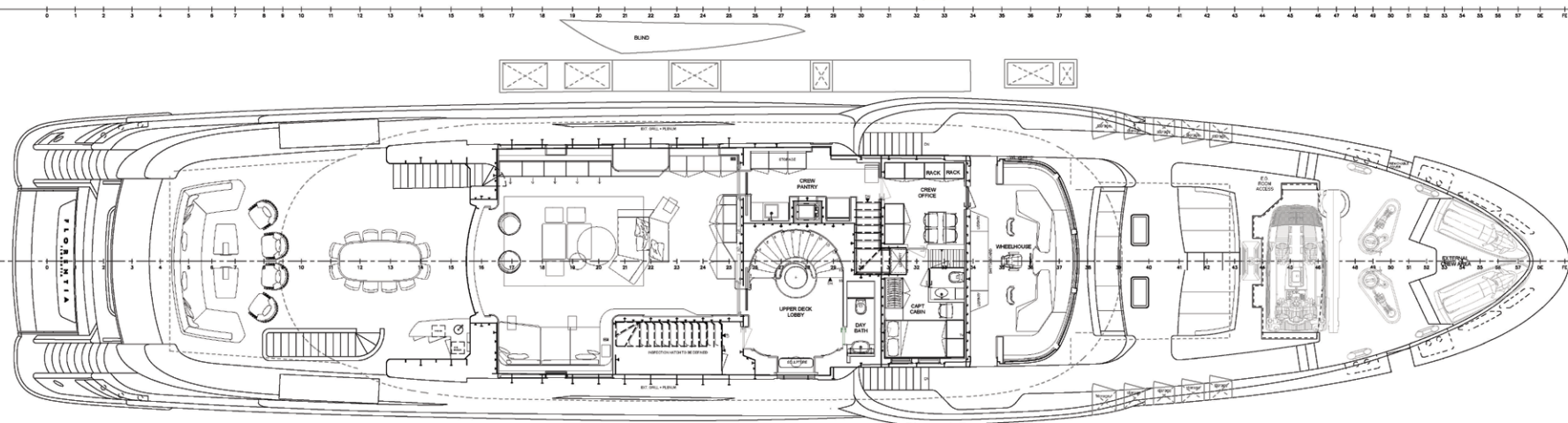
One Last Glimpse

Day or night, from inside the yacht or out, the elegant flow of Florentia melds nature's efficiency of design with every important contemporary convenience. The overall effect gently relaxes the mind while comforting the body. The yacht absolutely feels at one with nature while gently cradling guests amid shapes, colors, textures, and technology that delivers the ultimate Rossinavi experience: excellence in all they do. ⊕

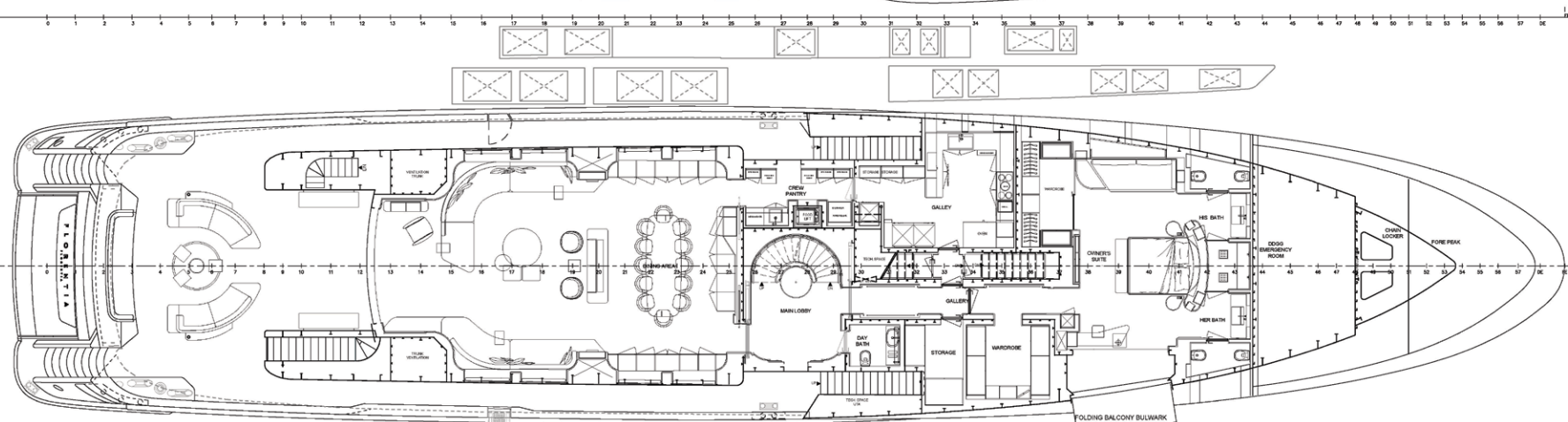




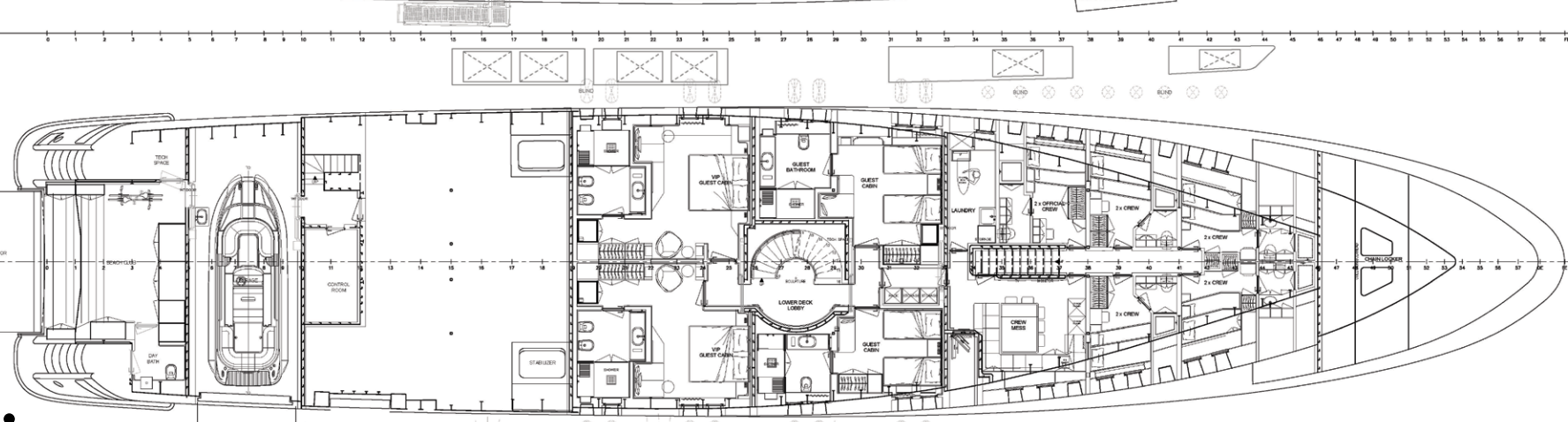
FLY DECK



UPPER DECK



MAIN DECK



LOWER DECK



Specifications

- » Length overall: 52m
- » Beam: 10.35m
- » Draft: 2.70m
- » Guest Cabins: 10 + 2
- » Crew Cabins: 10 + 1
- » Superstructure material: aluminum
- » Hull material: steel
- » Hull configuration: full-displacement
- » Main engines: 2x Cat 3512E DITA-SCAC
1,901 kW @ 1,800 rpm
- » Maximum speed: 15kn
- » Cruising speed: 13.5kn
- » Range: 5,000 nm @ 10 kn
- » Gross Tonnage: 800 GT







Southern Wind Shipyard 30m

MORGANA

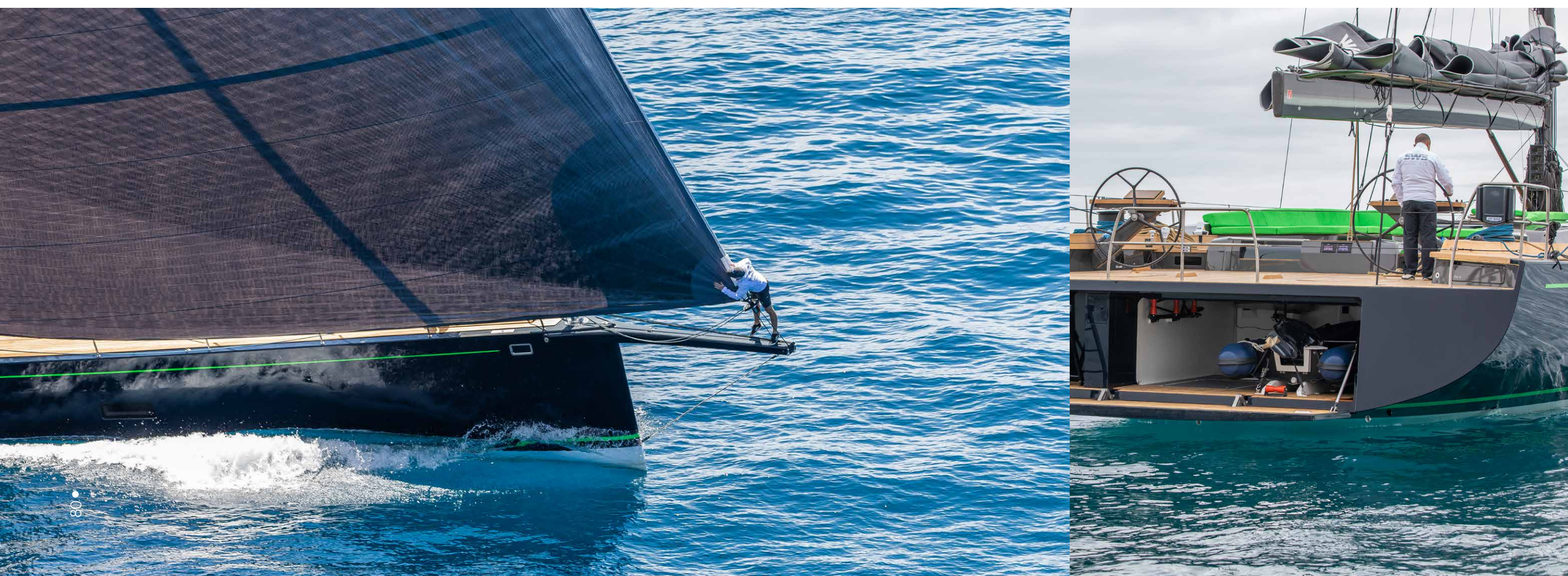
Photos: Southern Wind Shipyard Media | Words: Brian Hancock





There is only one word to describe Morgana, the latest launch from Southern Wind Shipyard in Cape Town, South Africa. That word is 'stunning.' From the boat's plumb bow to her graceful sheer and towering sail plan, every inch of this dream yacht is exquisite. Born under the towering presence of Table Mountain and sea trialed in the cold waters of Table Bay, Morgana has met every expectation of the entire team involved. Despite Covid, Morgana completed her maiden voyage sailing from Cape Town to the Mediterranean Sea in 30 days; a 6,900-mile offshore test that confirmed her great sailing potential and complete seaworthiness.

Morgana is a collaborative effort between the yacht's owner, Southern Wind Shipyard, Nauta Yacht Design, and Jim Pugh from Reichel/Pugh Yacht Design. Nauta Design, who was responsible for the yacht's overall conceptual design, both the interior and exterior, and Reichel/Pugh Yacht Design, who computed the naval architecture that allowed this yacht to be both high performance and comfortable, have a long term relationship, and their collective vision comes through loud and clear. When combined with the expertise of Southern Wind Shipyard, the builders, and with the owner, who is an experienced and passionate yachtsman, the result is pure magic.



Step aboard, and the first thing that you will notice is the clean, uncluttered deck. The yacht is a true thoroughbred with more emphasis placed on performance rather than guest amenities. There is no covered area where afternoon tea is served. Tea will come in a cup, and you had better be prepared to hold on tight while drinking it. Morgana is a lean, mean sailing machine and if speed and solid high performance is your idea of a good time, then you will be in the right place.

The hull's inner and outer skins are in full carbon with a Corecell core, while Nomex and prepreg are used for the fore and side decks, the aft cockpit and the fore and aft bulkheads. This lightweight construction method optimizes weight and increases performance and comfort.

All this is all not to say that Morgana is not exquisitely comfortable both on deck as well as below. There is a large central cockpit area where guests can sit or lounge with tea or without tea. Whatever their beverage of choice, they will be in the thick of the action watching the helmsman and tactician working a bespoke steering station that features twin wheels and digital screens that can give them all the information they need to keep the boat sailing fast and safe.



Forward of the steering station is a recessed mainsail traveler, which the mainsail trimmer can use to control the gigantic squarehead mainsail. Forward of the mast are two recessed tracks for the jib. Thanks to a tender garage located in the transom, an ample foredeck locker, a hidden mooring arrangement, and an underwater anchor system, the 100 footer's deck is clean and elegant and works with optimum efficiency. When the tender garage is opened, it also serves as a swim platform.

The interior of Morgana is just as crisp and clean as the exterior and is very spacious. The yacht has a beam of 7,8 meters (25.6 feet), with the beam carried almost all the way aft. This provides a lot of room for crew and guest cabins. A companionway located just in front of the steering stations leads down to the crew quarters. There is a captain's cabin along with a shower and head. Opposite is a separate crew cabin. Forward is the galley and crew dining area and opposite is the first of two guest cabins.

Just forward of the galley is a full height and easily accessible engine room, which allows for simple maintenance of a myriad complex systems that keep the yacht humming at its full potential. The engine room is located slightly to starboard making it necessary for all systems and battery positioning to be carefully optimized and balanced. The hydraulic system is powered by two state-of-the-art 48V DC motors that produce 40kW and are controlled by a very efficient PLC system designed by MYT that can run in a completely silent mode.

Amidships is a second companionway that drops down into a very spacious and well-lit saloon area. To port is the dining area and to starboard a comfortable seating area where the owner and guests can relax and enjoy an interesting conversation. A unique feature of Morgana is a completely separate television area where one can relax and enjoy their favorite TV shows without disturbing other guests who might just want to chat and have a cocktail. Opposite the TV area is the second en-suite guest cabin.

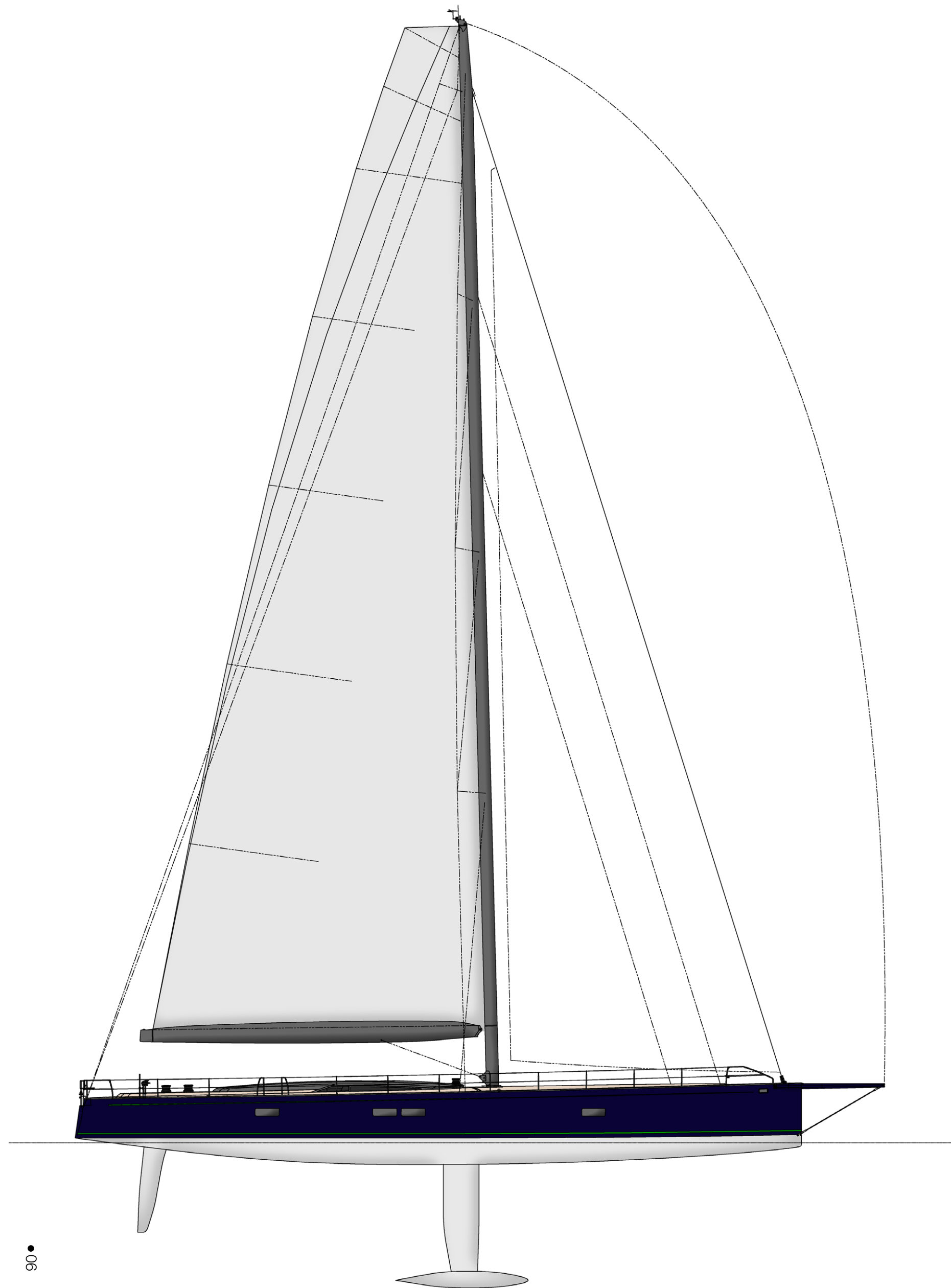
The owner, knowing that the yacht will spend time docked stern-to in the Mediterranean, cleverly situated his cabin all the way forward as far away as possible from the hustle and bustle of the dock life of a busy seaside port. It's a spacious area, very tastefully decorated with wood tones and bright white decor. The cabin features a large double bunk with a seating/work area to starboard. The owner's head is all the way forward and has a toilet, bidet, and a bathtub.

Morgana also features a lifting keel that retracts to 4 meters from 6.1 meters allowing the yacht access to some of the less deep ports. Below decks, you would hardly notice that the keel has been raised. The keel box is hidden behind the television in the TV area.









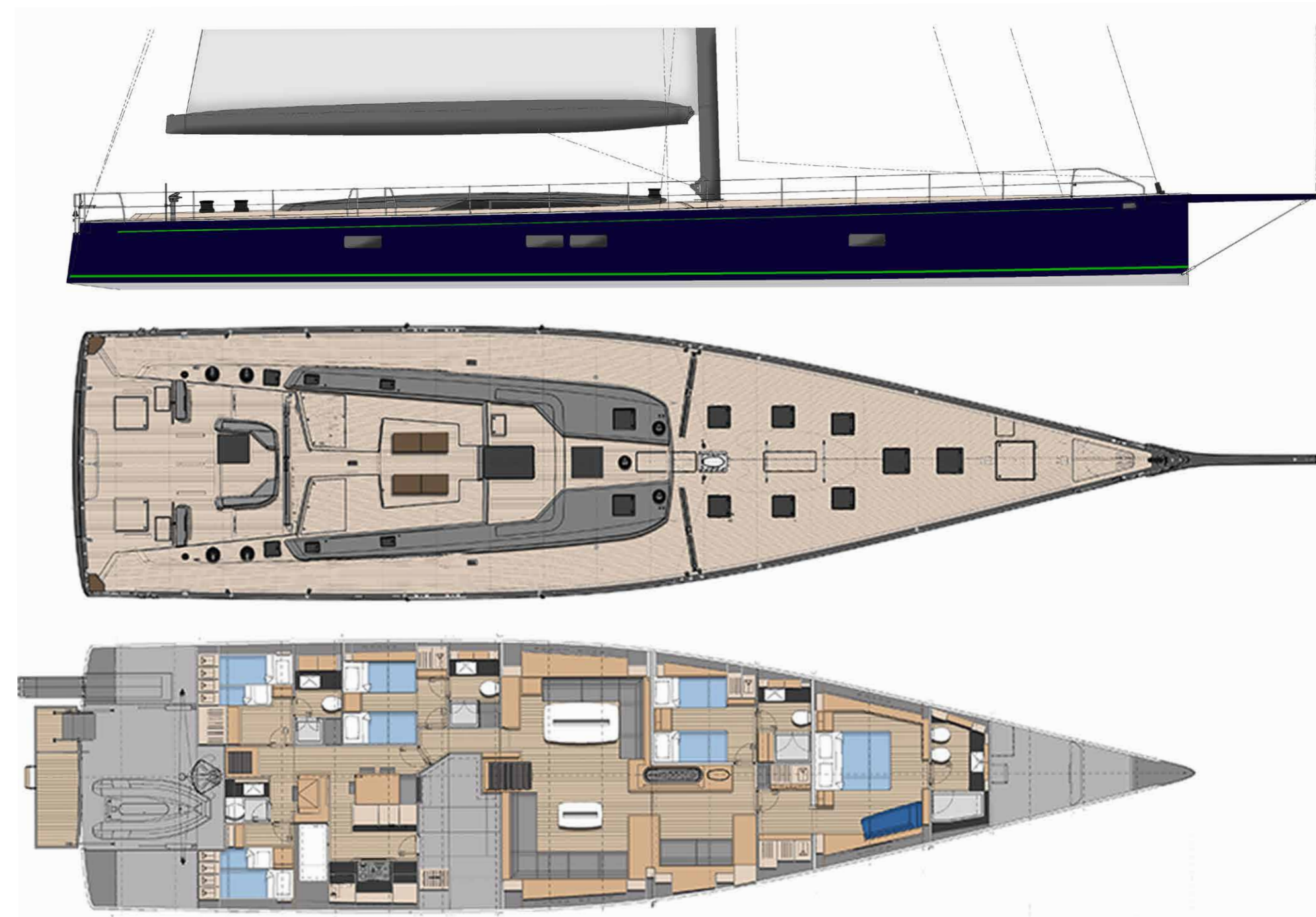
One of the most striking features of this elegant yacht is the sail plan. The yacht is powered by a massive squarehead mainsail, and because the main is the principal driving force, the mast is located quite far forward. The jib is non-overlapping and set on a fractional forestay with the furling unit located below decks. The bowsprit is removable and installed only when the yacht is in racing mode.

I imagine Morgana on the offshore sea trial between Cape Town and the Mediterranean. She would pick up the southeast trade soon after leaving South Africa. The yacht would romp in the steady breeze enjoying champagne sailing conditions. The wind would die closer to the equator, but the towering mast and ample sail area would keep Morgana sailing at a reasonable speed. Once into the Northern Hemisphere, the navigator would position Morgana to take full advantage of the trade winds circulating around the Azores high-pressure system. The idea would be to hook onto the western side of the high and

slingshot through the Strait of Gibraltar and into the Med. Along the way, the crew would enjoy fast sailing, a comfortable ride, and the knowledge that they were aboard a state-of-the-art yacht designed and built for high performance as well as for comfort and safety. Morgana is a true thoroughbred. ⊕

Specifications

» LOA:	30,5 m
» LWL:	28,96 m
» Beam (Max):	7,46 m
» Draft:	4 m - 6,1 m (lifting keel)
» Displacement:	63,620 kg (lightship IRS)
» Sail Area:	638 sq m
» Engine:	CUMMINS QSB6.7 301Hp@2600rpm





LIFESTYLE



Lamborghini
HURACÁN STO

Photos: Lean Design GmbH | Words: Jorge Arcuri



The Lamborghini Huracán STO Super Trofeo is a racing car that, supported by the Lamborghini Squadra Corse, has won the 24 Hours of Daytona three times and the 12 Hours of Sebring twice; definitely an enviable racing story!



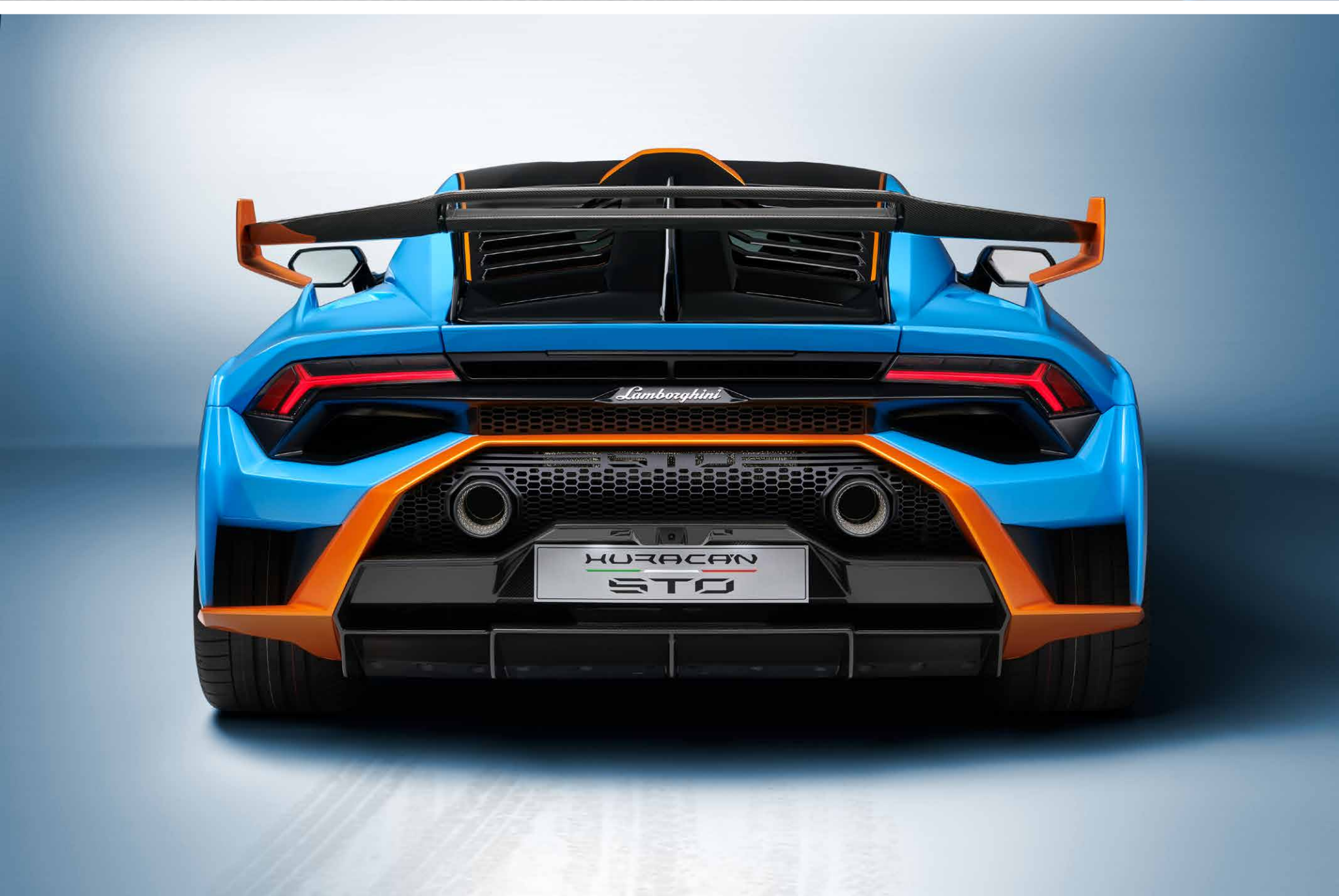
Based on this legacy and experience, Lamborghini offers us a car that embeds all the technology that Squadra Corse has developed, applied, and brought to victory over the years.

Lamborghini Huracán STO was born to make it possible for those who drive every day on open roads to experience unique emotions, knowing that they are driving a Lamborghini that can set the lap record on any racing track.

Ten cylinders, 640 HP, 565 Nm of torque, a weight-to-power ratio of 2.09 kg/hp, 0-100 km/h in 3.0 seconds, 0-200km/h in 9.0 seconds, braking from 100-0 km/h in 30.0 meters, and from 200-0 km/h in 110.0 meters lead its impressive numbers. A weight of 1,339 kg, hybrid aluminum-carbon fiber chassis, mixed aluminum and composite bodywork with front (bonnet and bumper: "Cofango") in carbon fiber, ... with aerodynamics, and a winner's road-holding on the slopes.

This is a concise description of the machine's history and technical characteristics, information, and data; in other words, the vehicle ID. Nevertheless, here at NAVIS, we want to make introductions in our own way. Our magazine has always set itself the task - and our readers know it - of presenting and showing the beauty and emotions of the most extraordinary vehicles that move in water, on land, or in the air.

For this very same reason, and in particular, as a car designer, I will try to look at the Lamborghini Huracán STO from a different perspective, describing what our senses perceive when looking at, listening to, and touching this particular object. I don't want to describe a car to you; I would like to let you "experience" it: let's use our senses to unveil the secrets of this unique car's soul.



Seeing:

Aesthetics act on emotions. Each one of us reacts subjectively to shapes, proportions, and forms. For this reason, while looking at the Huracan STO, you should be looking at yourself, focussing on your feelings. I'll be happy to accompany you on this exploration.

When we look at this car's profile, the typical Lamborghini aggressiveness is enhanced, highlighted more than ever. Its shapes and details leave no doubt that it derives from a racing car, as if it had just come off a racing track. Yet, incredibly, you could get in it and drive it in your city. Every surface, every air intake or slit has a specific technical reason for being that way, but we see colors, shapes, lightness, strength, "we even see" speed...

Hearing:

Sound... a ten-cylinder engine at the back that comes to life at our command cannot fail to cause us a thrill, an exhilarating, unique sensation that invades us deeply on a physical level.

We can feel the power roaring behind us. We want to dominate it, possess it, and keep it with us for as long as possible.

Touching:

Extraordinary surfaces, which run and follow one another naturally, like the wind that, as soon as we move, flows over them without obstacles.

Our hand glides through these surfaces, and we close our eyes: shapes are cold to the front, and they get hotter when sliding on the bodywork as we move towards the rear, where ten roaring and burning cylinders vibrate. Every time we meet the car, we will not be able to avoid repeating "such a caress"...

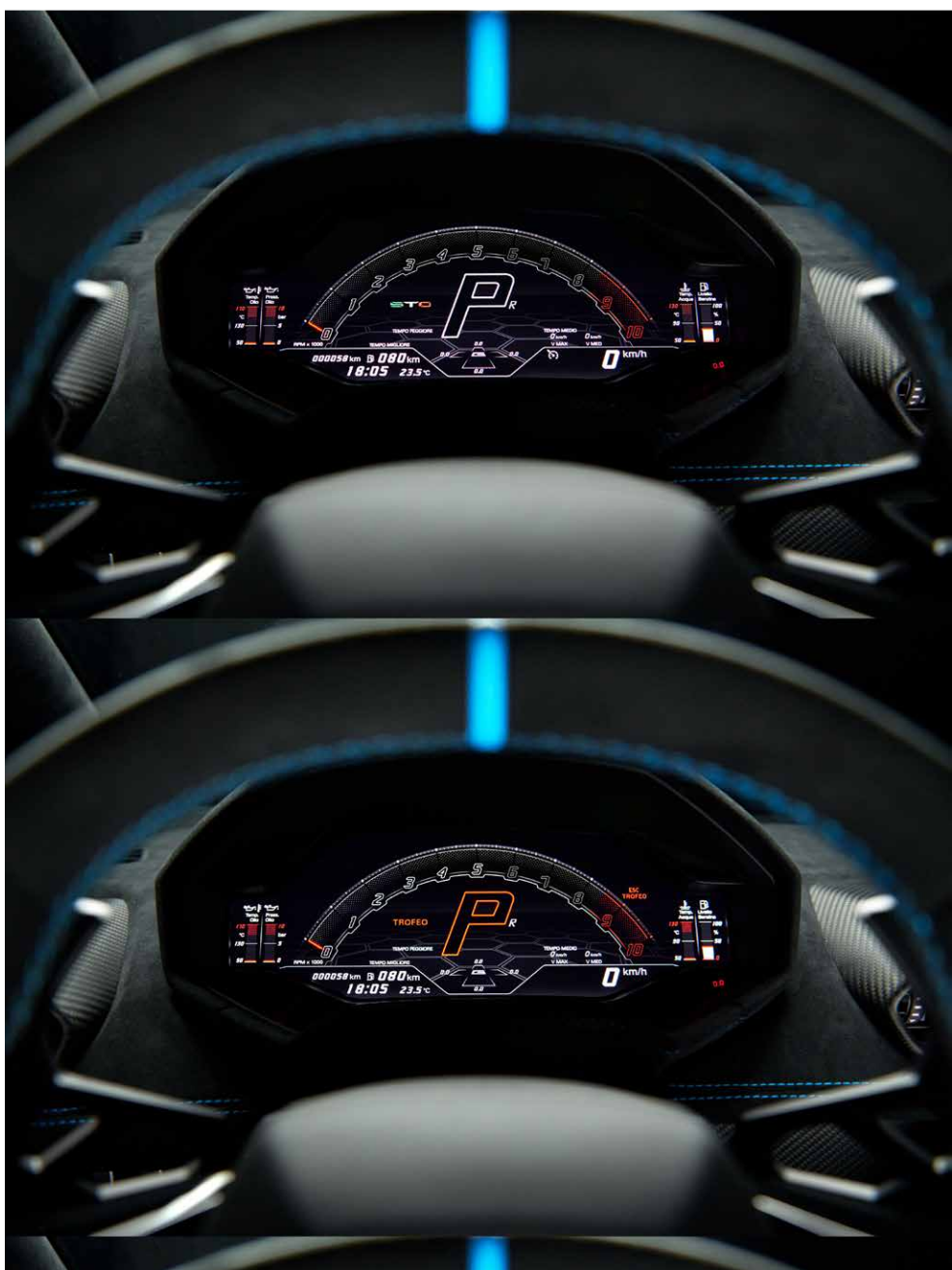
Feeling:

I have no doubt that this model surpasses all the sensations experienced previously. Lines, surfaces, details, sounds ... all intense feelings that you lucky ones will indeed find multiplied.

Now, sitting in that technological but welcoming cockpit, you will raise the starter safety switch, press the relevant button, and that inevitable thrill will invade your being. You will check the rise and fall of the engine revolutions and the piercing scream of the six hundred and forty wild horses. But you will be surprised and incredulous when you kick them off. They can be sweet or wild with bewildering versatility.

Accelerating, the thrust on your back is formidable. Decelerating is another surprise... safety is the feeling, and it is yours. Every action is of you, every reaction it's of him ... you will be reluctant to end experiencing this apparent state of symbiosis with the vehicle.

And if you are not alone, your co-pilot will become part of these emotions and will grow in her, or him, the will to try them completely ... keep well the keys of desire!⊕





YOUR PARADISE AWAITS

KOKOMO

Photos: Danielle Harte, Lisa Michele Burns, Mark Lane | Words: Janine Devine





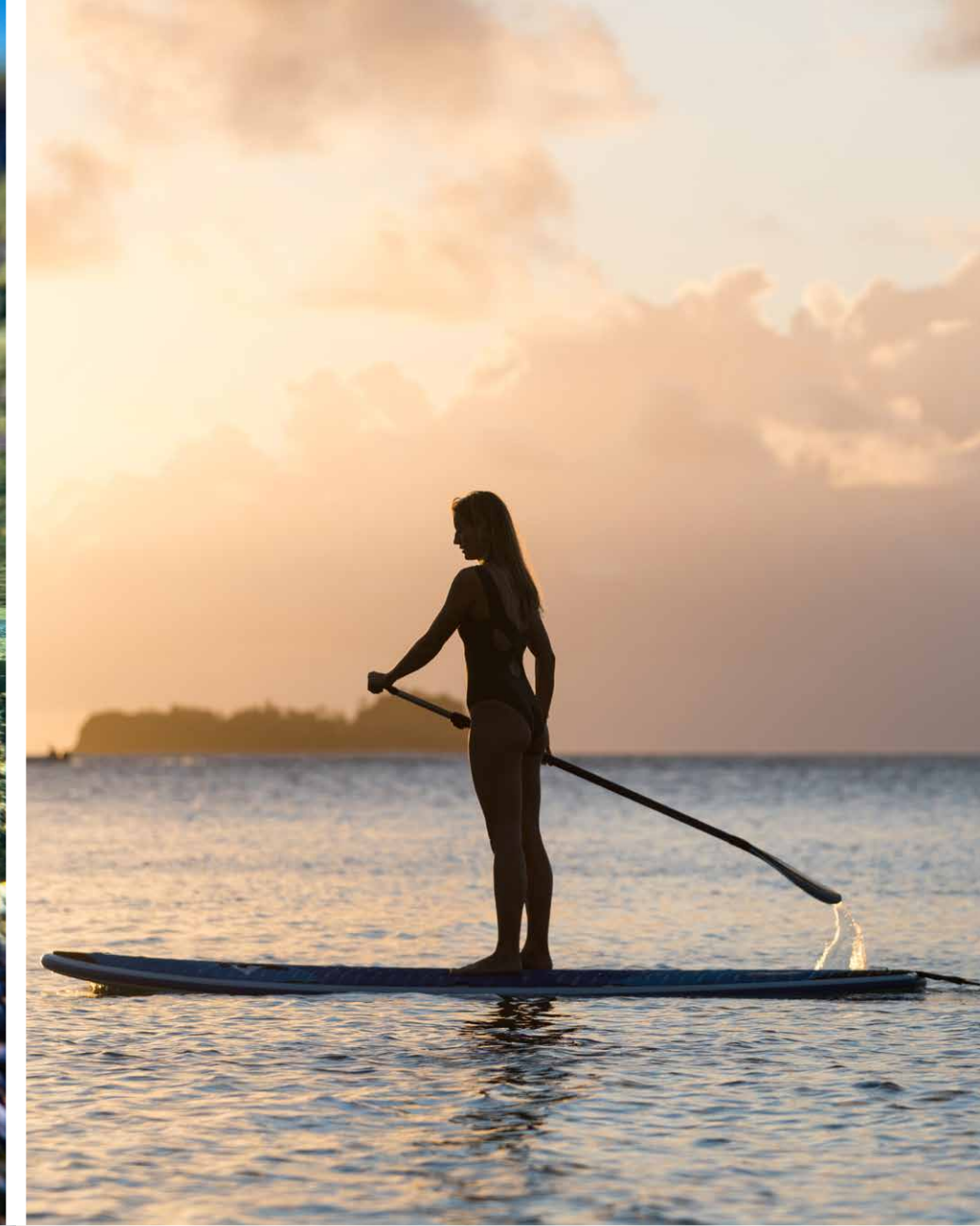
Fiji has long been a hub for superyachts in the South Pacific. It's easy to see why this archipelago with pristine blue waters gently cradling lush, verdant islands, some un-inhabited, with soaring palm trees is so enticing. The year-round tropical weather and the world's 4th largest coral reef makes for incredible diving and snorkeling experiences. The waters here team with rays and turtles and exquisitely colored sea life. Seasonal visits by whales are also part of the incredible appeal of Fijian waters. Surfing and game-fishing are popular experiences here, too.

It's no wonder that this natural paradise and its welcoming inhabitants attracted the attention of Australian Lang Walker, an avid diver, sailor, and surfer. Lang reminisced about the Fijian vacations of his youth and long had envisioned creating an exclusive resort here. As an exceptionally successful property developer, not to mention superyacht owner, he certainly had the background and wherewithal, and most especially the passion.

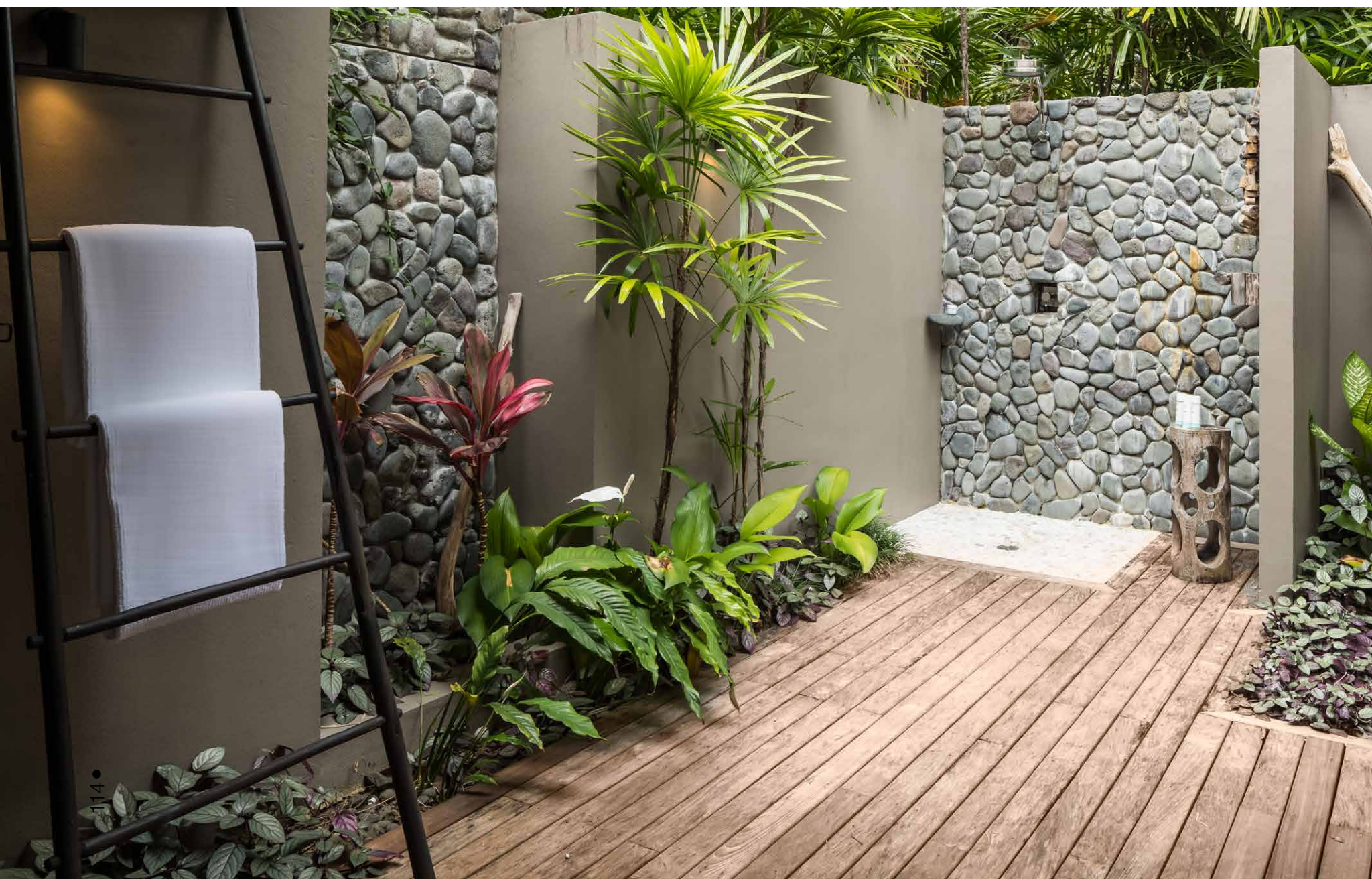
And so, at the edge of Fiji's Kadavu Island group, just a 45-minute seaplane flight from Nadi International, a decades-long dream of Walker and his family has been realized. Named after Walker's beloved superyacht, Kokomo Private Island Fiji beckons guests to indulge in this haven of tranquility and carefree beauty. Natural social distancing and privacy are in abundance here. The 21 villas and 5 residences sparingly dot the island's two longest white sand beaches. Each standalone accommodation has its own infinity pool, deck, and private tropical garden. This makes Kokomo as ideal for an intimate couple's getaway as it is for a multi-generational family reunion in an ideal, self-contained playground. The entire island's 140 acres is even available for a complete buyout to make it your very own for a small wedding of up to 30 guests or a group of friends to enjoy.

The magic begins with a typical Fijian welcome in song. The attentive staff bids guests Bula! or Welcome! to wide, open-spaced accommodations on this ultimate island retreat. Soft neutrals abound here in the bright and airy interiors designed to cosset guests without detracting from the natural beauty of the ocean and beach beyond. Each unit is luxuriously yet sustainably crafted with local plantation timbers and pale stone sourced directly on the island or from neighboring islands. The elegantly organic villas feature beach and ocean views and range from 1-3 bedrooms. They are intimate, indulgent refuges, with seductive outdoor showers, along with kitchenette facilities to enjoy in-villa dining should a hermetic mood strike. The 5 larger Residences range from 3 to 6 bedrooms and are perched higher up in the tropical terrain, but with the same stunning beach and ocean views. Kokomo's most exclusive is the Sunset Residence, its largest at 6 bedrooms, with an open-concept interior space on split levels, spanning over 11,900 square feet. Captivating views from floor-to-ceiling windows on all sides. Five en suite spacious guest bedrooms on the main floor with the upper level exclusive to the primary bedroom suite. This residence accommodates 12 guests, perhaps more with additional bedding.









Kokomo guests can keep occupied with an endless array of activities. With a 5-star PADI facility on site and the resort's premium location just feet from the Great Astrolabe Reef, inner and outer reef diving explorations are tops. Kokomo is committed to sustainability and reducing its environmental impact and hosts marine biologists. Guests are encouraged to interact with and pitch in on the biologists' work on the restoration of the surrounding coral reef. Guests can also delight in nearby island hopping to visit local villages or hike to spectacular waterfalls. Nannies are onsite to look after the younger set from 9 AM to 5 PM, and The island's indulgent Yaukuve Spa, Fiji's largest, features a hammam and offers Wellness Journeys with private consultations, personalized menus, and training sessions.

All that privacy in a remote location demands truly extraordinary cuisine. The island resort's culinary mastery shines here. Walker was always intent on creating a world-class destination dining experience. In fact, the only venue where menus are not updated daily is the resort's spa. The menus at the open-air Beach Shack, the casual Walker d'Plank bar and restaurant, and the poolside Kokocabana with wood-fired pizza oven all tap into the enormous bounty of land and surrounding waters, with focus on traditional Fijian, Asian-fusion cuisine, and comfort foods. Locally sourced is very local: fish and seafood are dock-to-dish, and the fruits, herbs, and vegetables are from the island's 5-acre farm and hydroponics garden. And on that farm, you'll find chickens and beehives, too.

So Lang Walker and family brought this vision to life over a period of 3 years and have thought of every detail in the creation of this unrivalled South Pacific Paradise. Not least are

fellow superyacht owners welcomed with meals and lodging, the full Kokomo experience, as part of the island's Anchor and Stay plan. Or they are invited to make use of the resort's incomparable facilities in the Explore Kokomo package, and overnight back aboard their yacht.

How to reach Fiji's most exclusive private island resort? Normally the resort's regular transfers to and from Nadi international. But in these COVID times, the airport is currently closed to commercial traffic. Still, escaping to Kokomo Private Island Fiji has never been easier. Fiji has been welcoming visitors through their VIP Blue Lane Initiative. Guests arrive on their private jets and then rendezvous with their yachts for the mandatory quarantine period. While there are several requirements to be observed, among them the standard negative PCR test results and possibly covering the cost of a shadow boat during the two-week quarantine. The Initiative mandates the assistance of a South Pacific agent such as the one introduced to NAVIS by Port Denarau Marina, Fiji's premier full-service marina facility. The marina is a part of Fiji's largest integrated resort complex at Port Denarau and features 20 berths to accommodate superyachts up to 85 meters in length and 5-meter draft.

A honeymoon hideaway, a family retreat, a watersports enthusiast's paradise, a nature lover's sanctuary, a haven for superyacht owners. Kokomo Private Island Fiji is all these things, a quintessential South Pacific paradise for all seasons and all people. With the unlikely addition of a pandemic, it is now the locus of the ultimate productive workcation. ☺







Helly Hansen/Gill Marine/MUSTO Clothing
SAILING SPRING
COLLECTION

Photos: Helly Hansen Media, Gill Marine Media, MUSTO Clothing, Pablo Ferrero | Words: Emma Hersh

For the latest in designer sailing apparel, we are reviewing pieces from Helly Hansen, Musto, and Gill Marine's spring collections.

Clothing selections include stylish designs and garments suitable for all types of weather conditions and durable and hardwearing enough for competitive performance sailing.

Helly Hansen

Superbly designed sailing garments from Helly Hansen featuring their newly added Foil Pro Soft Shell jacket and Womens HP Hybrid insulator for the ultimate in warmth and wet weather protection.

Foil Pro Soft Shell Jacket

This fantastically constructed and versatile sailing jacket from Helly Hansen offers exceptional weather protection while on board. The 4-way stretch outer material has a rubbery texture and provides ease of movement for comfortable maneuvering. HellyTech's professional three-layer fabric is guaranteed to be breathable and almost 100% waterproof. All water entry points, including zips and seams, have been completely sealed, so you remain completely dry while sailing, even in challenging weather conditions. Tiny drainage holes ensure that pockets remain moisture-free, and Stealth Cuff Waterstop construction keeps arms and sleeves fully protected. A storm flap and chin guard protects from wind and rain, keeping the warmth in and unfavorable elements out. The jacket's interior has a soft, warm feel and a discrete black over grey HH logo completes the design.



Crew Hooded Midlayer Men's/Women's Jacket

For colder weather sailing, this Polartec fleece-lined jacket is guaranteed to keep you warm and dry. Waterproof and windproof, the sealed outer layer will bead away water droplets, and the fully sealed seams prevent ingress of moisture. Made with a 2-layer construction, the HellyTech fabric and Polar mid-layer provides maximum heat retention. The jacket's hip-length design features a one-handed drawstring for safe operation and has a full hood that folds neatly into the jacket collar when not in use. Taller people may find the jacket length slightly short, but overall this garment will provide warmth, rain protection, and full functionality for long days on the water. Store essential items easily in the water-sealed zip pockets, and display your race card in the rear, below the collar, ID holder.

The women's version of the Crew Hooded Jacket features the same excellent waterproof and insulation properties. It is designed using a light fresh grey and white material that is highlighted with red zipper cords, and neon flashes for a chic and eye-catching look. The Helly Hansen logo is featured on the rear collar again inside the front zipper flap. A black HH stamp has been added to the jacket's right upper arm and left back shoulder. For lighter summer days, the Women's Crew Hooded jacket also comes in a vest version that sports the same color palette as the full jacket and featured an interior mesh lining. 3 zip pockets are available, with 2 at the waist and one on the left side chest. The Helly Hansen logos are visible on the right collar, the inside zip flap, and across the inside waistband.



Crew Insulator Jacket

This Crew Insulator jacket features Primaloft insulation and water-repellent fabric to keep out the wind and rain. The garment's quality construction is completed by the easy-to-grab, full-length Metalux zipper. Beautifully designed to provide maximum warmth and comfort, this jacket is perfect for chilly mornings or extended upwind sailing. The design features a Helly Hansen logo emblazoned across the collar and on the upper zipper flap. The recognizable HH is also visible on the right side of the front collar and rear left shoulder. Available in Navy Blue or Ebony Black with red detail. For a lighter look, the jacket comes in a Grey Fog color with black detail. For those with a marine lifestyle, this jacket can be combined perfectly with the Foil Pro Jacket, and may also be paired with the Crew Hooded Midlayer Jacket for an extra layer of warmth and protection.



HP Hybrid Insulator

Also from the Helly Hansen Spring Collection is the stunning HP Hybrid Insulator vest featuring Sorona insulation from Dupont. The padded insulator jacket is durable and lightweight and designed with stitched padded sections that run the jacket's length and along the arms to ensure maximum insulation. Lightweight and flexible, the Hybrid Insulator has been constructed with thinner, lighter material beneath the arms to allow for full range movement. The insulator works exceptionally well with the Women's Crew jacket, though we would recommend before purchasing to try both pieces together for accurate sizing. Windproof, lightweight, and treated for water repellency, this jacket has been engineered to be race-oriented and long-lasting.



Women's Crew Insulator Jacket & Vest

This beautifully styled and padded insulator jacket is warm, soft, and lightweight. Made from recycled materials that are both wind-resistant and water repellent, this feminine classic vest features elasticated waist hems and armhole openings to ensure a secure fit. Designed to retain maximum heat, it is perfect for protecting sailors from poor weather conditions on cold or windy days. Primaloft insulation keeps in the warmth, and the padded front is detailed with contrasting piping for a modern, stylish look. The Women's Crew Jacket or Vest works beautifully combined with the Crew Hooded jacket to provide a higher level of insulated warmth and keep off water from rain or spray.



HP Ocean FZ Hoodie

A clean technical-looking sports hoodie with full zip and lined for warmth and comfort. Great for protection from cool or breezy weather conditions. The garments' outer layer is constructed using 74% Cotton, 19% Polyamide, 7% Elastane, which gives a lightweight neoprene feeling. The ribbed cuffs and raglan sleeves allow for complete freedom of movement, and 2 slant zip pockets are available for easy item storage. For colder days on the ocean, this hoodie can be combined perfectly with the Foil Pro jacket to provide waterproof protection and additional warmth. Using the hoodie with the Crew Hooded jacket is possible but not advisable due to garment friction that could restrict movement. Sporty and sleek this hoodie creates a cool casual look on or off the water, and the Helly Hansen Hydropower sailing logo is featured on the hoodie's arm.



Women's Crew Fleece Jacket

An insulated fleece top that provides excellent warmth retention with top-quality durability and comfort. The high-level collar keeps out wind and cold, and a handy chest pocket sits atop the 2 x zippered hand warmers. The slick face fleece construction helps to repel ocean spray, and this versatile jacket has enough room to wear on top of additional layers. The high-caliber construction allows full freedom of movement for active sailing days.

Riftline Polo

Designed using Tactel waffle pique fabric to keep it soft, light, and breathable, this classic short-sleeve polo shirt is perfect for active days aboard the yacht and will keep you cool and dry. With a rib collar and cuffs, this is the quintessential garment that all sailors should have in their collection. Great for a casual look on warm summer days, this polo shirt features a UPF rating of 50+ for maximum protection from the sun's rays. The 3-button front placket can be worn closed or open depending on the required look. This popular style shirt can be combined with shorts or a jacket for a stylish and casual appearance.

Women's Siren Polo

With a warm and inviting texture, this traditional women's polo shirt feels soft and warm to the touch. With a stylish design and classic look, this shirt will be perfect for warm and sunny days on deck. The quick-drying fabric deflects wind and light spray, and there is a

4 button placket to compliment the minimalist design. Comfortable and versatile, this polo shirt is available in 3 colors and will combine nicely with any outfit choice. The entire piece is lightweight and cool, and the HH logo is subtly nestled on the sleeve hem.

Men's HP Dynamic Short/Women's HP Dynamic Shorts

Available in both men's and women's versions, these Dynamic HP shorts are guaranteed to keep you cool and dry during high-performance sailing expeditions. These quick-drying technical shorts are reinforced at the seat for durability. The stretch fabric allows for full movement and functionality. 2 x slant hip pockets and 2 x cargo leg pockets allow for easy item storage, and there is a built-in D ring at the waistband. A UPF 40+ rating provides sun protection and the HH logo featured on the right leg. The women's version of the shorts has been designed using the same fabric and feature an adjustable waistband with belt loops, with 2 x hip pockets and 1 x zippered thigh pocket for carrying necessary items.



Gill Marine

Gill Marine's product line includes weather-resistant and durable clothing like the Men's Coastal Jacket, created using innovative layered fabric systems. Their Championship sailing gloves demonstrate their dedication to quality design with advanced pre-molded formation.



Eco Pro Rash Vest

The Pro Rash vest has been constructed from yarn created by recycling PET plastic materials. The 4-way stretch fabric has been designed to sit close to the body, providing fully functional movement. It can be worn by itself or as a layer of insulation beneath other garments. The high neck long sleeve design fits like a second skin and has built-in UV protection. Comfortable and lightweight this vest is suitable for a range of pursuits and promises long-lasting durability even with continued use.



Championship Gloves

For complete hand protection while on-board, these sailing gloves are light and durable. Made with reinforced Dura-Grip for enhanced security and long-lasting performance, these gloves are easily adjustable to ensure the perfect fit. Pre-molded to the hand's shape, there is a shortened cuff to allow maximum flexibility and range of motion. Offset seams reduce wear and pressure to key points, and the 60% neoprene helps with water resistance.

Men's Coastal Jacket

This solidly constructed jacket is light and breathable, perfect for coastal and inshore sailing. An excellent all-rounder benefiting from many of Gill Marine's design innovations with double layers, hand water blockers, velcro cuff fasteners, and reinforced elbow areas. An extended collar rises as high as the ears and a fluorescent green hood provides maximum nighttime visibility. The same fluorescent green highlights the jacket's edge piping, and the Xplore 2 layer fabric system is lightweight and durable while retaining excellent waterproof and durability features. Stain-resistant, odor-resistant, and breathable, this jacket is comfortable and affordable for year-round sailing days.



Race Shorts

Lightweight and flexible these Race Shorts will be the ideal item of clothing for spring and summer days on the water. Breathable and durable with a reinforced seat panel, versions are available for both men and women. The water repellent fabric is hardwearing and there is a cargo leg pocket with an additional zippered front compartment for safe storage of items. Perfect for summer sailing days these shorts allow for full movement and offer UV protection.



Offshore Boot

Providing a secure grip and a thermo-molded construction, the Gill Offshore Boot is designed for maximum traction in wet and dry conditions. The razor cut reinforced outsoles are supported by surrounding reinforcement to toe, heel, and instep, while an external gaiter deflects water and provides fast drainage. An elastic cord and hem gripper securely fasten for a watertight seal, reducing water ingress. The thermal neoprene upper offers impact protection and an interior thermal lining to keeps feet warm and dry even in heavy conditions.



Musto

Decades of engineering experience have given Musto the edge when it comes to high-speed competitive clothing. Advanced material technology creates top-grade protective outerwear like the LPX GORE-TEX Infinium™ Aero jacket, while the Flexlite Vapour collection highlights how recycled materials can be incorporated into high-performance sailing-wear.

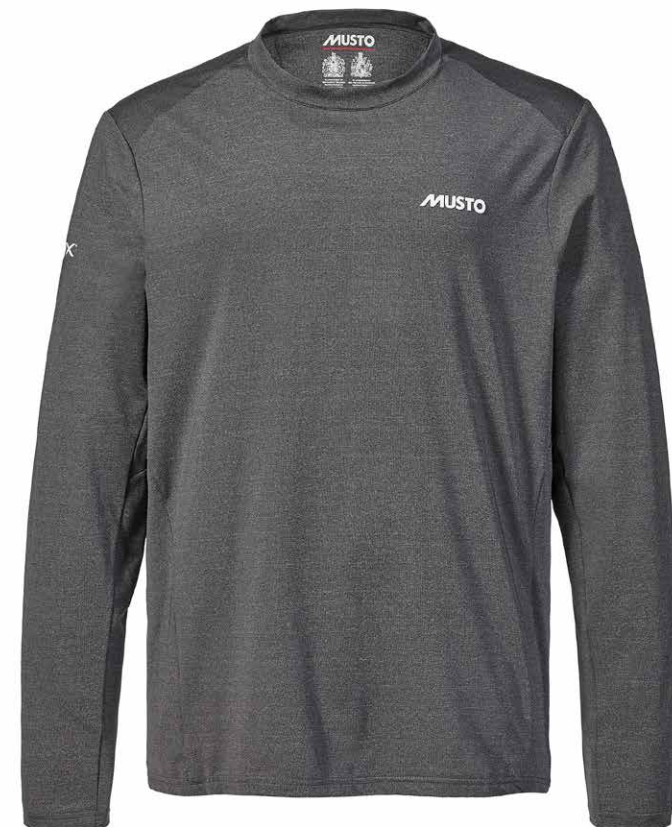
LPX Gore-Tex Infinium Jacket

Designed from the lightest performance fabric available, the LPX Gore-tex jacket is made for high octane racing. Paclite+ fabric and taped seams ensure protection from rain and spray while the jacket remains breathable and comfortable. Ideal for cruising at high speeds, this performance garment is constructed with flexibility and functionality in mind, this comfortable waterproof jacket beads and wicks moisture away using Gore membrane technology.



LPX PrimaLoft Stretch Midlayer Jacket

Boasting a body-mapped design that promises the utmost in movement and flexibility, the PrimaLoft jacket has been designed to maintain warmth during cooler weather conditions. Inshore sailing teams that wear head-to-toe LPX when competing demanded a jacket to complete the LPX product range. Constructed to be exceptionally flexible and comfortable, the underarm gussets and articulated sleeves provide a full range of motion when on board. Perfect for competitive and extended sailing participants.



LPX Sunblock Dynamic T-shirts

Using Singtex Ice-Cafe yarn made partly from post-consumer coffee beans and provides a next-to-the-skin solution for sailing in warmer climates. The recycled yarn emulates the cooling properties of Xylitol, which can lower the body temperature by 3 degrees. Also, the coffee beans help to combat odor and maintain freshness. For sun defense, the material is SPF 50 rated and protects the wearer from harmful UV rays. The classic T-shirt design can be worn alone or under other garments to create an additional layer. Cool and casual with an eco-friendly spin.



Flexlite Vapour:

The Musto Flexlite Vapour collection has been developed in collaboration with the British Sailing Team and comprises seven pieces. The entire product line is created using post-consumer recycled materials and is designed to keep sailors at optimum temperatures in both hot and cold conditions. Construction of the garments included Ventiprene, a highly breathable material that is four times more efficient than neoprene. Musto has also pioneered the use of water-based glue in their clothing which eliminates harmful compounds created by solvent-based lamination glue. The Flexlite product line features shorts, long johns, and tops that are all designed for high-performance sailing.

The clothing items featured for review have been selected for their quality, performance, and cutting-edge design characteristics. Each brand has an exceptional track record in terms of design, construction, and continued technological advancements in materials and weather protection, making them a top choice for competitive sailors. ⊕



NAVIS™

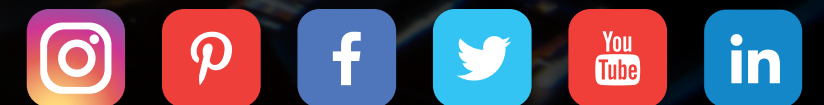
US Best Superyacht Design Magazine

Subscribe
Today

Purchase Print and Digital Subscriptions:
www.navisyachts.com/store/

Call:
+1 305 913 1337

Follow Us:



@navismagazine





Quality and
Performance
are at the heart
of every sail
we make.

www.greatcirclesails.com
+1 617 271 0712