



# NAVIS™

YACHTS DESIGN & LIFESTYLE

Issue 61 | August/September'21



Admiral 55m

# GECO

[www.navisyachts.com](http://www.navisyachts.com)

Riva 50 m

Race

Southern Wind 32m

Taniwha

Azimut 38m

Grande Trideck

Luxury Lifestyle

AMANPURI, Thailand

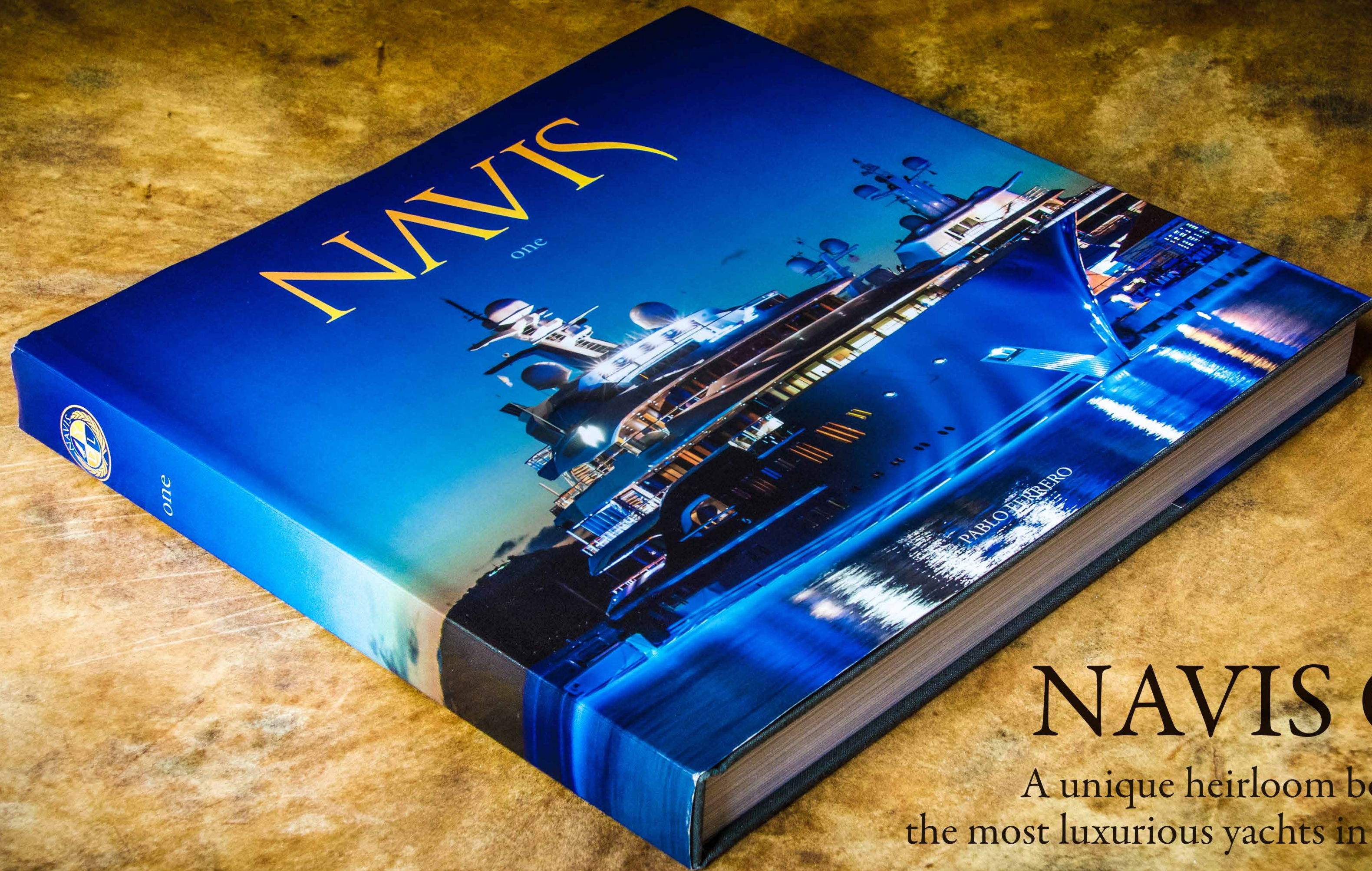
Regatta Days Essentials

Supercars

Aston Martin DBX







# NAVIS One

A unique heirloom book about  
the most luxurious yachts in the world

Order your copies: +1 786 406 6111 - [enquiries@navisyachts.com](mailto:enquiries@navisyachts.com) - [www.navisyachts.com/store](http://www.navisyachts.com/store)



An impeccable, 240-page presentation,  
every chapter covers, in meticulous detail,  
the most amazing superyachts  
cruising the waters today.





building expertly crafted motor yachts  
not takes the world's most unique challenges  
example of how ISA overcomes challenges  
designers for years. Given the builder's  
function and beauty, it's no surprise that  
stures that will interest aficionados of art,  
ring.

**Only One of a Kind**  
beautiful yacht filled with art and luxury. Its  
erence, is what makes it truly one of a kind. It is  
combination helps Silver Wind reach high  
is consuming large amounts of fuel. Through  
technology, ISA has built one of the world's  
yachts without hurting its performance.

ing Silver Wind for her owners, ISA chose  
ignition, two Siemens electric motors, and two  
propulsion systems. These systems work  
combine huge amounts of power that can propel  
at maximum speeds up to 32 knots. She even  
up with her.

erative combination of water jets and  
with a V hull design to cut through  
maintenance as possible. A cruise  
when it makes reaching  
the U.S. gallons of  
the engine has received

298 tons. That's like a 270,341-kg (596,000-pound) car driv-  
ing for an hour on 76 liters (20 gallons) of fuel. It's practi-  
cally unimaginable, and yet ISA found a way to build a yacht  
that matches those performance specs.

### The Art and Luxury of Silver Wind

Not everyone will get excited about the technical achieve-  
ments that make Silver Wind such an innovative yacht. Any-  
one, however, can understand that beauty, art, and luxury  
make her a prominent vessel.

Every aspect of Silver Wind's interior was carefully crafted  
to meld traditional and contemporary designs. Guests explor-  
ing the ship will find rooms full of artistic elements. Even  
the furniture has an expressive depth reserved for the most  
sophisticated yachts and resorts. A combination of quality  
woods such as walnut, satin rosewood, and high glass epoxy  
becomes even more remarkable thanks to details that include  
precious stones, mother of pearl, and art glass.

Other artistic decorations found aboard Silver Wind include  
mosaics, opalescent walls with repeating patterns, and metal  
stress tapestry that brings life to every inch of the vessel.

### Life Aboard Silver Wind

Silver Wind has enough room for 8 guests to live comfort-  
ably. Living quarters include a master stateroom located  
on the main deck, a VIP stateroom, and three guest cabins  
with double beds. Whether drifting quietly in the water or  
hopping aboard to a new destination, guests do not have to  
worry that noise will interrupt their comfort. Silver Wind  
uses advanced active noise cancelling technology to protect  
all cabins from disturbing sounds.

Guests enjoy aboard Silver Wind have access to numerous am-  
enities and options through Valtersmide integration. The system in-  
cludes air conditioning, water systems, and control for environment light  
and temperature systems, etc. Fully located throughout the ship  
the system has ability to control every corner of these systems



A perfect mix of Motor Yachts and Sailing Yachts transports the reader into a world of adventure, passion and luxury that few have the privilege to experience.

NAVIS One is an exceptional book that will be cherished for years, not only for its fascinating reading, but also for its value as a design resource.

Order your copies: +1 786 406 6111 - [enquiries@navisyachts.com](mailto:enquiries@navisyachts.com) - [www.navisyachts.com/store](http://www.navisyachts.com/store)





Race



Geco



Taniwha



Grande Trideck



DBX



Anampuri

LIGHTER, STIFFER, FASTER, GREENER – TOGETHER



## Contents

Riva 50 m Race	15
Admiral 55m Geco	39
Southern Wind Shipyard 32m Taniwha	61
Azimut 38m Grande Trideck	79
Aston Martin DBX	103
Celebrating The Artistry Of Peace At Amanpuri, Thailand	115
Six Degrees Of Maximization: Essentials To Get You Through Regatta Days...And A Few Nights	135

\*For queries or information requests about the yachts in this issue contact: [enquiries@navisyachts.com](mailto:enquiries@navisyachts.com)

## STAFF

Year 9 - Number 61  
August - September 2021

Editor-In-Chief, Director:  
Pablo Ferrero

Editorial Assistant:  
María Donadio

Contributors:  
KL Turner, Jodie Oaks, emma Hersh, Janine  
Devine, Jorge Arcuri

Design:  
Gabriel Parra

Cover Image:  
Admiral Media

Media Photography:  
Alberto Cocchi, Admiral Media, Southern Wind Shipyard Media,  
Azimut Media, Federic FF, Dominic Fraser  
, Courtesy of Aman, Gill Marine Media, HIGHMIND.SE, North Sails  
Media, Marie France L'Ecuyer, Zhik Media, Soren Wiegand, Kyle  
Meyr, Helly Hansen Media, Pablo Ferrero

Advertising: [advertising@navisyachts.com](mailto:advertising@navisyachts.com)  
Letters/Comments: [contact@navisyachts.com](mailto:contact@navisyachts.com)  
General Enquiries: [info@navisyachts.com](mailto:info@navisyachts.com)  
Subscription Enquiries: [contact@navisyachts.com](mailto:contact@navisyachts.com)  
<http://www.navisyachts.com/store>

Website: [www.navisyachts.com](http://www.navisyachts.com)  
**Navis Yachts** is published by **Flat World Communication LLC**.  
**Copyright Flat World Communication LLC**. ISSN 2160-7966. All rights  
reserved. Reproduction in whole or in part without prior written permission  
from the publisher is strictly prohibited. Great care has been taken  
throughout the magazine to be accurate, but the publisher cannot accept  
any responsibility for any errors or omissions which might occur. Although  
every care is taken with manuscripts and photographs submitted.

Navis ISSN 2160-7958 (Print)  
Navis ISSN 2160-7966 (Online)  
**Navis Yachts is a bimonthly publication:**  
Flat World Communication LLC  
201 S. Biscayne Blvd., 28th Fl, Miami, Florida, 33131  
t. +1 (305) 913 1337







### Lurssen's 115m Project Enzo

On June 18th Lürssen unveiled and launched Project Enzo, an upcoming 115-meter superyacht. It was commissioned by a frequent client who was impressed by his previously purchased Lürssen, and felt that nobody else could meet his particular demands. He was so delighted with his previous experience with Lurssen that the build and design team remained unchanged.

The client desired a family-focused and healthy life yacht, something that Nuvolari-Lenard, designer of the project's interior and exterior, seemed to grasp perfectly. As Dan Lenard explained, she has three decks integrated into the high bow design to ensure seakeeping in true ocean conditions. An environmentally friendly design featuring an innovative full-beam owner suite duplex for guaranteed comfortable traveling. Project Enzo also includes a spacious wellness area situated on the lower deck and an extra-large gym on the skylounge deck.

Project Enzo has highly eco-friendly innovations within her plans, such as a heat recovery system within generators to minimize energy waste. Including a dynamic positioning system that allows electronic anchoring to protect the seabed in sensitive areas and ensure safe mooring, making anchoring an easier task. As expected of Lurssen's expertise, Project Enzo will have state-of-the-art technology for the enjoyment of all onboard and an impeccable engineering system.

While some of Project Enzo's details have not been shared by Lurssen yet, one can be sure that she will be splendid. Lurssen's esteemed reputation leaves us all eagerly awaiting further information and makes the mystery more exciting with Project Enzo's evident potential.

**Continue reading @ NAVISyachts.com**



### "TECNOMAR for LAMBORGHINI 63"

NAVIS has been invited to the presentation of a new and particular Motoryacht; it is a yacht that redefines our perception of the previous 63 footers we experienced.

On June 30, we arrived at our hotel in Forte Dei Marmi, Italy. Around 7:00 p.m., after a bit of rest, we were already traveling together with a select group of journalists to the "Italian Sea Group Village." A structure with bar, restaurant, conference room, and other luxurious amenities, located on the same grounds as the great Tecnomar shipyard. There, a welcome awaited us from those responsible for the project, followed by an exquisite dinner in the company of the Lamborghini and Tecnomar teams, which was particularly pleasant. Then, to conclude the night, they presented a first and fascinating night vision of the Tecnomar for Lamborghini 63.

**Continue reading @ NAVISyachts.com**



### Baltic 146 Path Yacht v

Baltic Yachts has found the equilibrium between speed, elegance, and modern craftsmanship once again in their 146 Path. She has successfully passed sailing trials in Jakobstad, Finland, and has been delivered to her owner. With her dramatic finish of grey and orange, she is truly a vision of the utmost modern design.

Baltic's newest build is the third-largest hull by volume that the company has produced, yet her impressive size of 146' does not compromise her speed. Her lightweight advancement combined with her marine technology ensures perfect performance in all conditions. The 146 Path can produce renewable energy with 60 square meters of solar panels placed on the hardtop. These can produce up to 8 kilowatts, which can be flexibly used, making them useful for long voyages between harbors.

**Continue reading @ NAVISyachts.com**



### WHY200, Wally's newest superyacht

With the upcoming Cannes Yachting Festival in September, there are numerous debuts to look forward to and Wally's new WHY200 is already a standout. Wally has been innovating yachts for decades and this year is no exception, even Stefano de Vivo describes her as exceeding the "wildest expectations". WHY200 has some architecturally stunning features, such as the extended structural top in the upper deck with no supporting pillars creating a visually stunning sight that we would be awestruck to contemplate. The removal of the pillars creates an even more open space, elongating the flow of the upper deck and making it even more useful for activities with friends and family.

Wally's newest is also a standout for her unique design. One of the most notable features is the 37 meters<sup>2</sup> master suite; with its natural colour palette and the 270° uninterrupted view of the horizon, this master suite is perfect to relax on a starry night for an unforgettable romantic evening with your partner.

**Continue reading @ NAVISyachts.com**

### Turquoise's 74m NB66

Turquoise has awed us with an incredible launch this year, showcasing their 74-meter NB66, and they have more to come. Their most recent official launch took place in Istanbul with an extensive celebration and is planned to be delivered in September this year. The client expressed "I am happiest when I feel the wind in my hair and the sand in my feet." and his passion for the sea is clearly shown in the design of the NB66.

The NB66 is the personification of classical elegance, which was clearly a focus for Ken Freivokh's design work. A harmonious and balanced scheme, perfectly cohesive with Vallicelli's exterior design, makes NB66 a sight to bestow. Her central lobby has a stunning multi-deck atrium, creating an almost nostalgic ambiance that shall remain timeless. Such a bright and welcoming design is exemplified in the 6 guest cabins since she features suits able of opening to become adjoining suites. These suites are also able to be converted into private salons, perfect for accommodating up to fourteen guests.

**Continue reading @ NAVISyachts.com**





*If you can dream her  
We can design her.*

THINK - DESIGN - BUILD - ENJOY

NAVIS



Contact Pablo Ferrero +1 786 406 6111 [info@navisyachts.com](mailto:info@navisyachts.com)  
Let's start building your dream.



NAVIS™  
YACHT DESIGN & LIFESTYLE





Riva 50 m

RACE

Photos: Alberto Cocchi | Words: KL Turner









### The First Riva 50 Metri, RACE

Embracing all the qualities of the Riva brand, the 2019 superyacht RACE is celebrated as the paragon of its portfolio. The 49.9-meter/164-foot masterpiece, inspired by Carlo Riva's Caravelle steel-hulled series popular in the 1960s and 1970s, is the first yacht delivered by the Ancona-based Riva Superyachts Division. Distinctive, refined, and a joy to sail, RACE is in a class of its own.

Take the name, for instance. RACE reflects a passion for speed from its very hands-on owner and long-time Riva collaborator, Piero Ferrari. Working together with Riva parent company Ferretti Group's product strategy committee, along with Officina Italiana Design and the Riva Superyachts team, RACE further elevates Riva's already stellar functional and aesthetic position.

Throughout its long history beginning in 1842, Riva has displayed a respect for the art of Italian yacht building. Attention to detail and fine craftsmanship that establish a yacht as a Riva are subtly on display throughout RACE in all the right places. Stamped with the Riva logo, gleaming hardware is impeccably wrought and beautifully polished, down to the exquisite door handles fitted to the owner's own hand. Think custom bollards, moorings, and drain covers. Mahogany and polished steel on gunwales, cap rails, and lifelines continue the nod to Riva's heritage.

Also present and accounted for, the Ferrari brand adds pulse-quickening details that complete the yacht's truly distinctive, one-of-a-kind status. Think obvious choices like a captain's chair borrowed from the Ferrari California driver's seat, and a steering wheel sculpted from a sizable block of solid titanium. Think less obvious, more technical choices such as innovative use of honeycomb construction, fiberglass, Corian, and Nomex to keep weight to a minimum while improving durability.

### Exterior Details

A two-decade working relationship between Officina Italiana Design and Riva easily decided the design firm co-founders Mauro Micheli and Sergio Beretta as the right choice for both exterior lines and interior design. The duo is responsible for the design of all contemporary Riva builds.

Creating the clean chic signature and understated luxury expected of Riva yachts for the past two decades, Officina Italiana Design set to work on RACE, knowing this yacht for one of Italy's most revered luxury brands must be breathtaking.

Dovetailing their mastery of the Riva elements with Ferretti's Product Strategy Committee engineers and architects, Micheli and Beretta penned a simple profile; masculine, elegant, and timeless. Windows on the bridge rake back, paying homage to Carlo Riva's 1978 Vespucci. The forward lean of the steel displacement hull, the angles of the glazing, and the strong sweeps of the ascending aluminum superstructure suggest motion. The refined aquamarine waterline lets everyone know she is, without a doubt, a Riva.









### Interior Details

An effortless extension of the beautiful decks and outdoor spaces, the interior of RACE displays a light, fresh welcome to life at sea for up to ten guests in five cabins. Excesses removed, and essentials refined, guests are encouraged to focus on the experience itself, celebrating amid comfortable surroundings and perfectly balanced furnishings without unnecessary design distraction.

Hushing footsteps and softening the spaces, large, plush area carpets lay atop white Apuano marble floors. Walls of leather echo leather-covered headboards, while slatted mahogany panels add depth and privacy to ceilings and walls, serving the additional purpose of disguising air conditioning vents. LED spots respond to the sophisticated Lutron automation system, enabling guests to fine-tune the lighting according to mood. Statuarietto marble tables finished in polished steel strips stand at the ready next to pale grey leather sofas and chairs, accented with deep grey pillows and throws and the occasional splash of color.

A glass-framed main stairwell graces passage from the main deck to both the lower and upper decks. Amidships, an additional stair connects the lower deck galley and crew quarters to the main deck service area, dining, and deck space. This design departure localizes service traffic away from guest areas, and offers extra space to the main deck.

A dumbwaiter delivers silent service from the galley on the lower deck to the main and upper decks. Cold room and abundant storage are adjacent to the lower deck galley as well, keeping service areas efficiently located. Exceptional livability aboard RACE is enhanced by the optimization of space, ensuring its owner a high degree of privacy as the crew moves freely to efficiently complete daily operations.

### Upon Arrival, A Spacious Beach Deck

Serving as the garage for the Williams Dieseljet 625 tender, there is a starboard launch area that opens wide when the tender is removed. Upon arrival, the path through the spacious beach club is an impressive one, merging with the outdoors through stern and starboard hatches opening to balconies. Boarding ladders are thoughtfully placed at the starboard hatch and stern transom. From high gloss ceiling to teak sole, this spacious beach area is dressed in leather, mahogany, and polished steel, keeping step with craftsmanship and luxury exhibited throughout the yacht. Separate stair paths for guests and crew lead to the main deck cockpit.

### A Talented Main Deck Keeps It Simple

Emerging from the beach deck via the port side stair, the comfortable main deck cockpit offers an immediate social area, with cleanly designed sofas, chairs, and tables, all freestanding. Polished steel rails with mahogany caps rim the deck, with long banquettes lining both port and starboard. An ingenious buffet houses shoes, as guests settle into the barefoot bliss onboard, and an icemaker, ready to serve the first refreshments. An additional surprise, a 55" television slides down from the ceiling for instant entertainment.











### Seamless Entry to the Salon

Maintaining an extraordinary view of the sea at all times, the large sliding glass doors forward of the main deck open wide, imperceptibly joining the plein-air space with the salon. To port, an eight-seat, C-shaped leather sofa tucks a handsome, grey-veined, square marble coffee table into its center, looking on to a starboard-side large screen television. Slatted mahogany ceilings are mimicked by panels between the oversize windows, looking out onto the gunwales and the gorgeous open sea. Separated by a central cabinet, the dining area sits forward, flanked by oversize windows.

### A Chic Repast

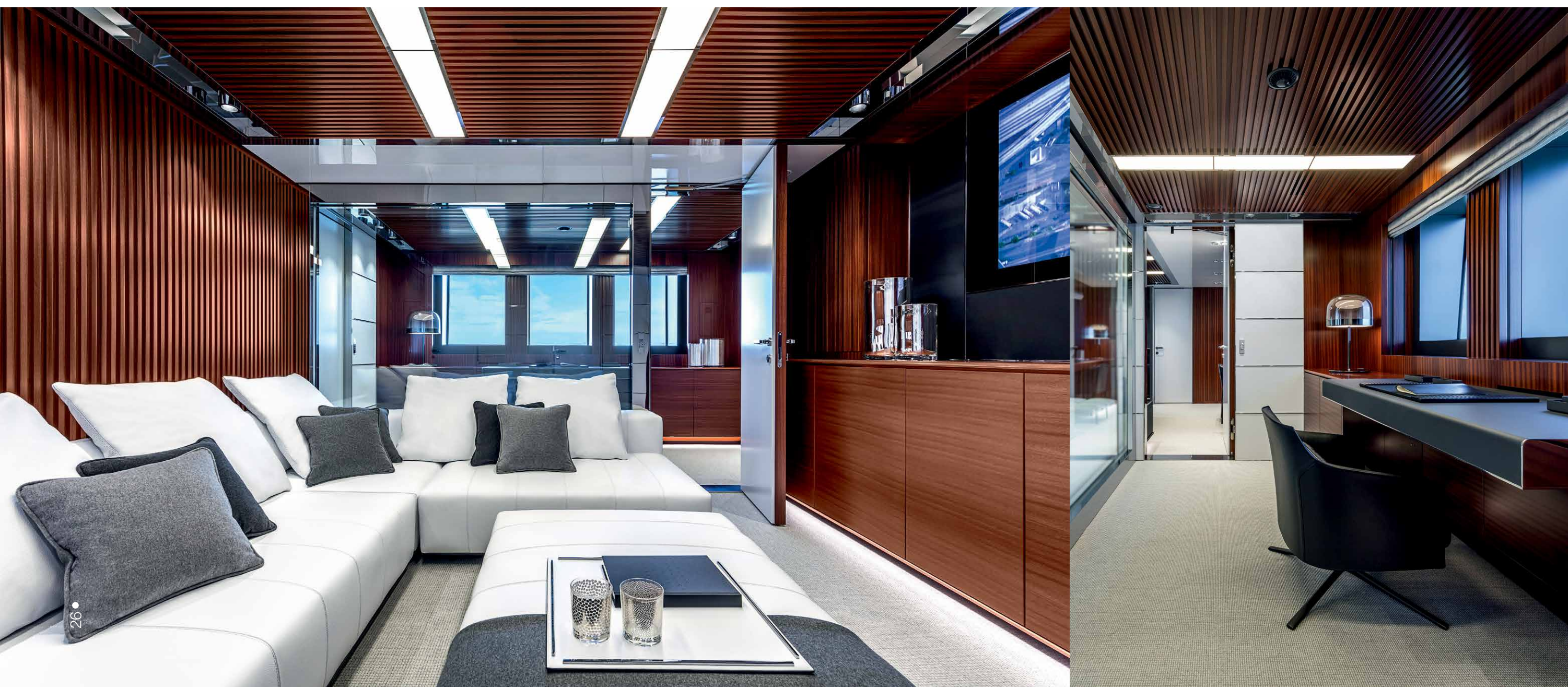
Simplicity is key in the large rectangle of glass atop steel base for everything from a quick petit-déjeuner to a celebratory feast. Perfectly positioned, it allows for all ten guests to enjoy a great view. Lighting is simple, stretching across the ceiling, port to starboard. Leather armchairs on wood frames sit atop a posh area carpet in muted greys, matching the salon area carpet.

Service from the pantry is provided through an electrically operated, mirrored door to port, where access to the lower deck galley is streamlined via the dumbwaiter. An additional mirrored door to starboard leads to the lobby, day head, and owner's suite.

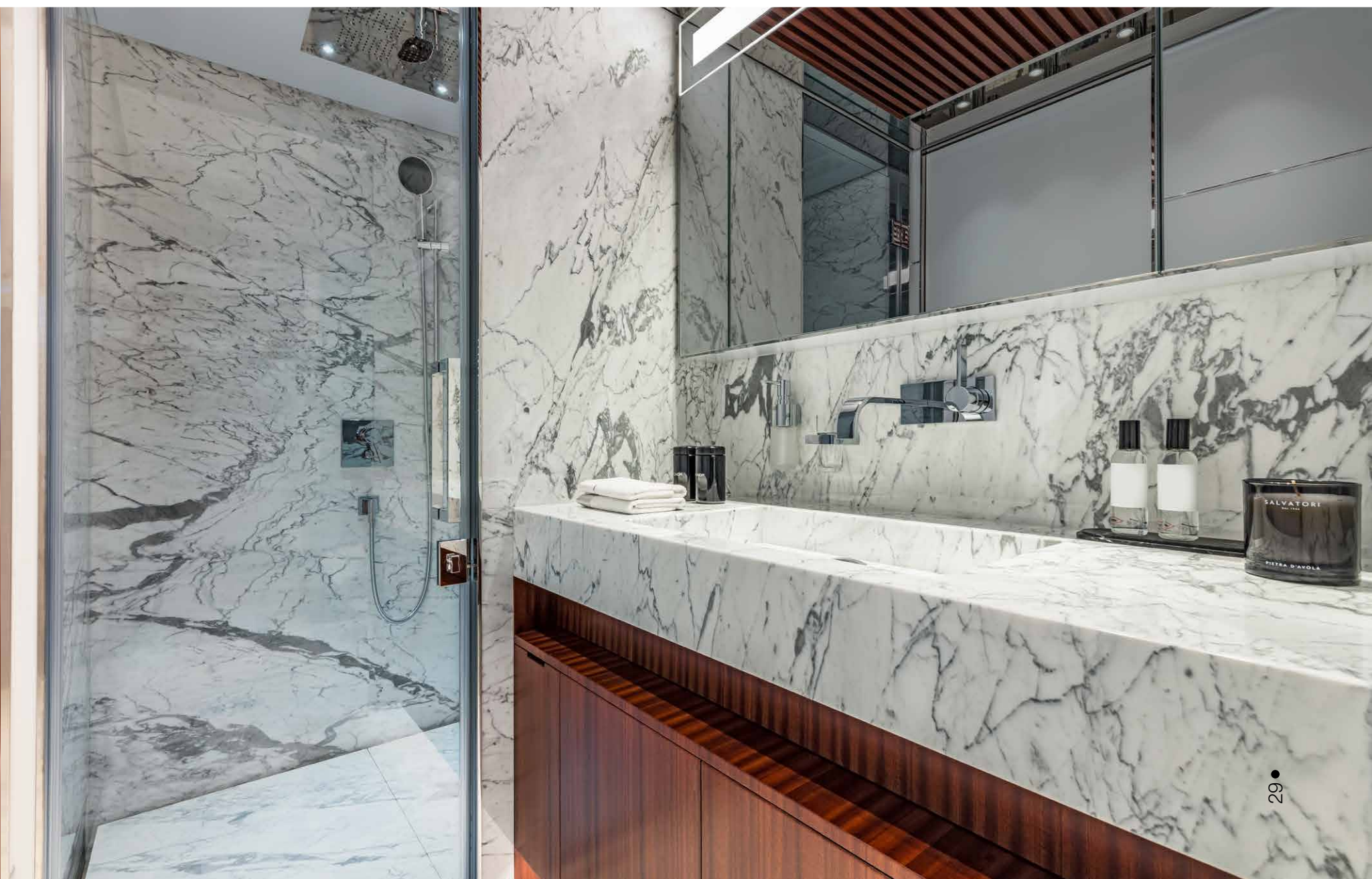
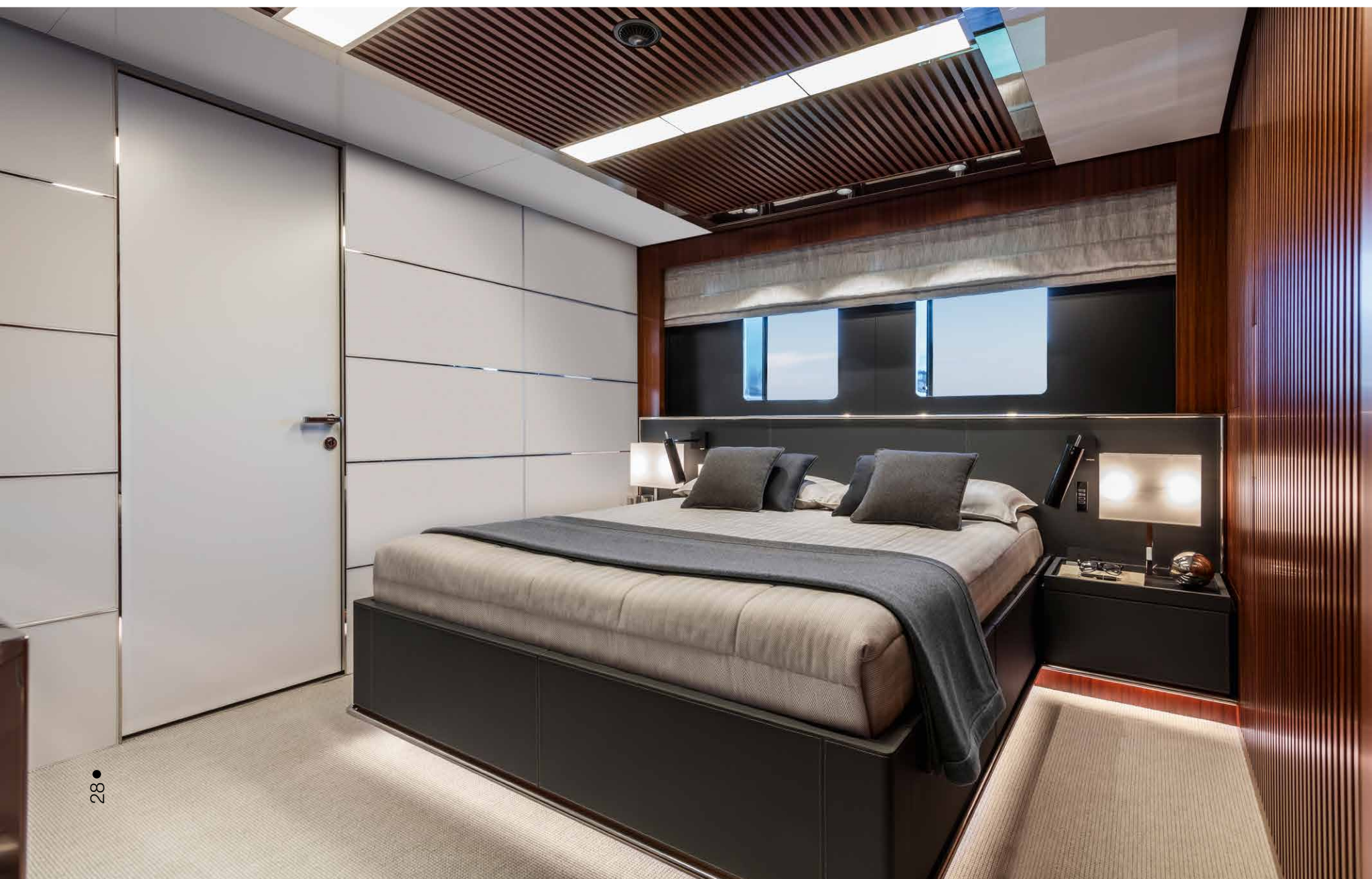
### 70 Square Meters of Serenity

Forward, after passing through the lobby, is an owner's suite designed for luxury, elegance, a quiet escape. A study at the entrance is joined by a private salon and media room to port. The salon is comfortably outfitted with a cushy sofa, a clutch of pillows, a walk-in closet, and an en suite bath with separate shower and head. The salon wall holds a privacy secret in the curtain housed between two layers of glass, allowing for appropriate levels of privacy at the touch of a button, allowing conversion to an additional guest room.

Forward of the study, salon, and media room, the owner's sleeping area is outfitted with a double bed featuring perimeter foot lighting and leather headboard, large marble bath vanity, spacious marble shower, walk-in closet, and all of the beautiful details in leather, polished steel, and mahogany in agreement with the grey range color palette. This spacious owner's suite, divided into three zones, provides peace and quiet through noise reduction and vibration levels not to exceed 40 decibels.











### Peerless Views from the Upper Deck

Access to the Upper deck, either via the central glass stair or the upper deck cockpit, delivers the opportunity to walk the gunwales and really enjoy the view. Fully aft on the upper deck, an open seating area features sofas and armchairs. A commanding Corian table for fourteen sits forward atop a beautiful teak deck.

Slipped between the open deck area and the cockpit dining area is a large, retractable television screen with swivel feature, allowing guests to view on either side. Fully covered, the dining area sports electric windscreens to port and starboard, sliding glass panels downward to offer weather protection.

Enclosed behind glass doors, the upper deck salon owns the day with a pale grey leather sofa and a pair of stylish modern leather armchairs, accessing marble-topped coffee tables with mirrored sides. A similar plush carpet in tones of grey from almost black to almost white comforts underfoot. A buffet unit and small wine cellar complete the salon.

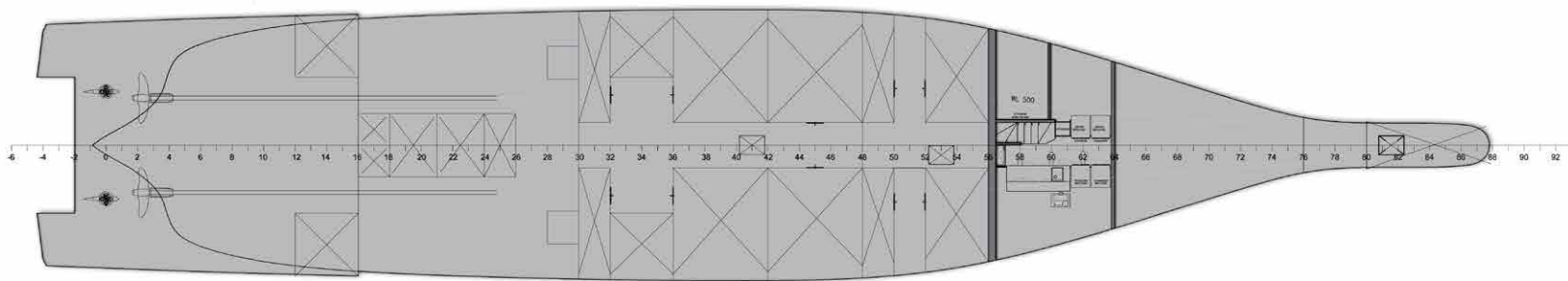
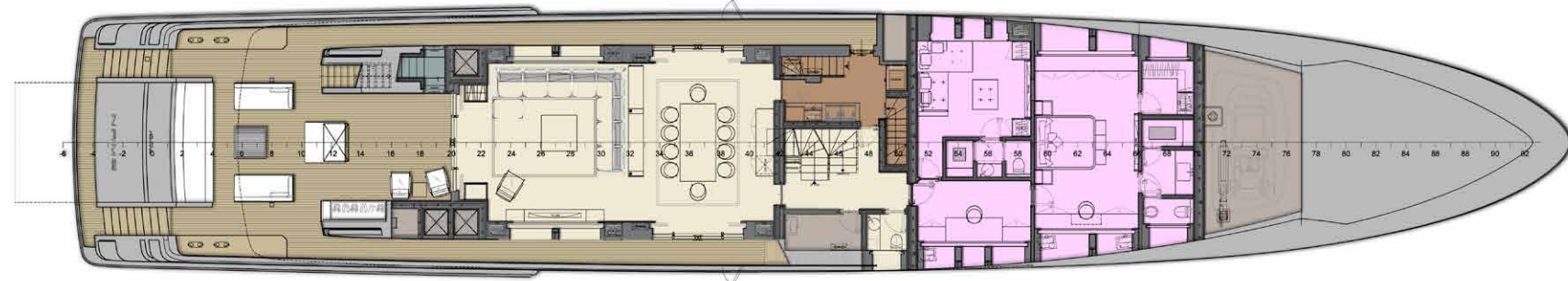
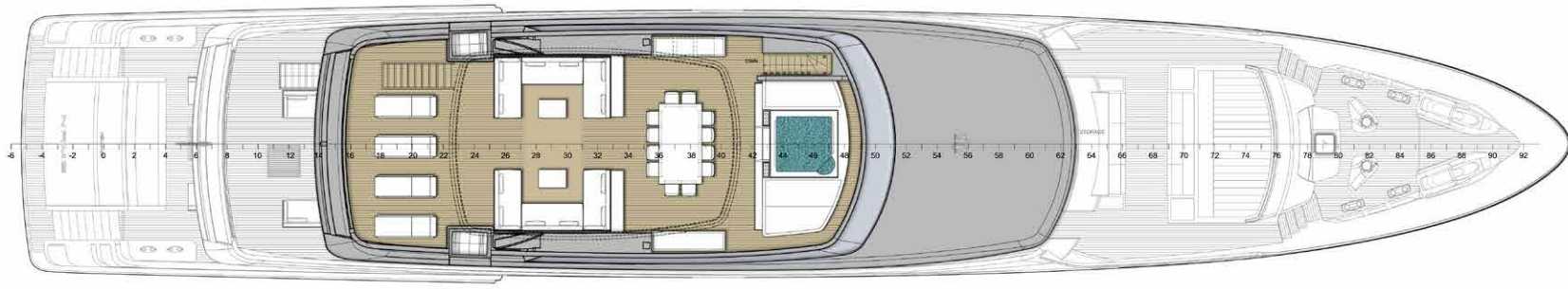
Forward is the captain's cabin with en suite placed in direct proximity to the wheelhouse. Sporting an integrated bridge from the iconic Team Italia, access to remote diagnostics provides important connections from land. Mahogany and cedar aside, the helm station owns not only a seat from a Ferrari California as the captain's chair, but also a custom wheel sculpted from a solid block of titanium, evidence of Micheli's genius.

Forward of the wheelhouse is a large lounge area with generous sun pads and mesmerizing views. The sun pad also houses a second tender garage and storage for water toys. A jet ski sits on the foredeck, just waiting for that next jaunt around the island courtesy of a davit in the forward garage.

A day head is located in the corridor connecting the salon. Bridge wings to port and starboard are fitted with side seats, specifically requested by the owner to observe mooring maneuvers. To port, a stair leads to the sundeck boasting 120 square meters of space, 90 of which are covered by a hard top to protect the dining table, barbecue, pop-up television, and hydromassage pool.







### A Good Night's Sleep, and So Much More

The lower deck houses a wide array of equipment and lots of features. Guests can access any of the additional four guest suites on the lower deck via the central glass stair. Three double and one twin cabin are all en suite, with every luxurious detail embracing mahogany, polished steel, and marble carefully tended to, including custom door handles, leather and polished steel accents, and camouflaged televisions, this time hiding behind mirrored panels with lacquered backs.

Aft of the guest cabins, behind a bulkhead, the engine room tucks in with ample space for the twin MTU 8V 4000 M63 diesel engines. RACE has a top speed of 15.5 knots, with a cruising speed of 14 knots.

Forward of these guest quarters, separated by a bulkhead and accessible via a service stair, four double en suite crew cabins truly show the design team's functional design aesthetic and innovative organization. A dinette serves for crew briefings, a cold room, storage room, and full galley with advanced equipment ensure the crew operates with efficiency and excellence.

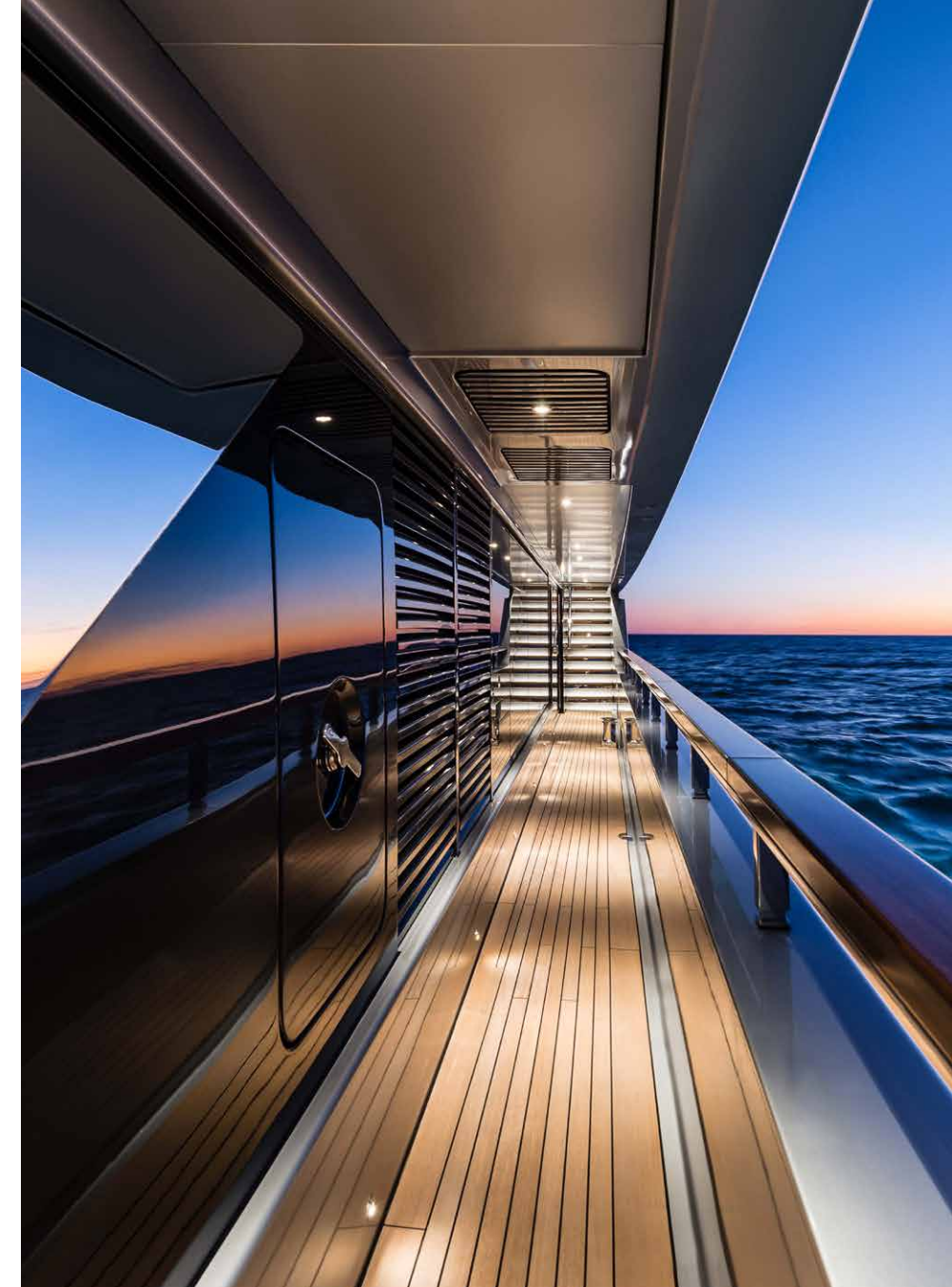
Below this deck, a level serving on-board systems and technical room plus two washing machines, two dryers, and an ironing board ensure that guests' every need will be addressed properly.

### Certifications

As the first of the Riva 50 Metri line, RACE has accomplished great goals while sacrificing nothing with regard to quality, craftsmanship, elegance, and function, deftly illustrating why the "Made in Italy" product is so highly regarded. Below 500 GRT, RACE falls into the first class on Lloyd's Register by the MCA. She is certified as second class by RINA, also owning the RINA Green Plus and Comfort Class certifications. Highly seaworthy, extremely comfortable, and graced with superior performance, RACE also respects the environment, owing to innovative designs employing state-of-the-art materials and technology. ⊕

### Specifications

» Length O.A.	49.9 m
» Beam	8.70 m
» Depth To Main Deck	4.75 m
» Draft Full Load	2.63 m
» Displacement Full Load	514.95 ton
» Gross Tonnage	499 grt
» Guest	10 ( N. 1 Owner Suite + N. 4 Guest Cabins)
» Crew	9
» Fuel Tank	55.000 litres
» Water Tank	13.000 litres
» Black And Grey Water Tank	7.000 Litres
» Max Speed (Half Load)	15.5 knots
» Cruising Speed	14.0 knots
» Range	3.500 Nm At 11 knots











**FWC**  
Luxury Products Marketing

MIAMI - t: +1 305 913 1337 - @: info@FWCadvertising.com - www.FWCadvertising.com



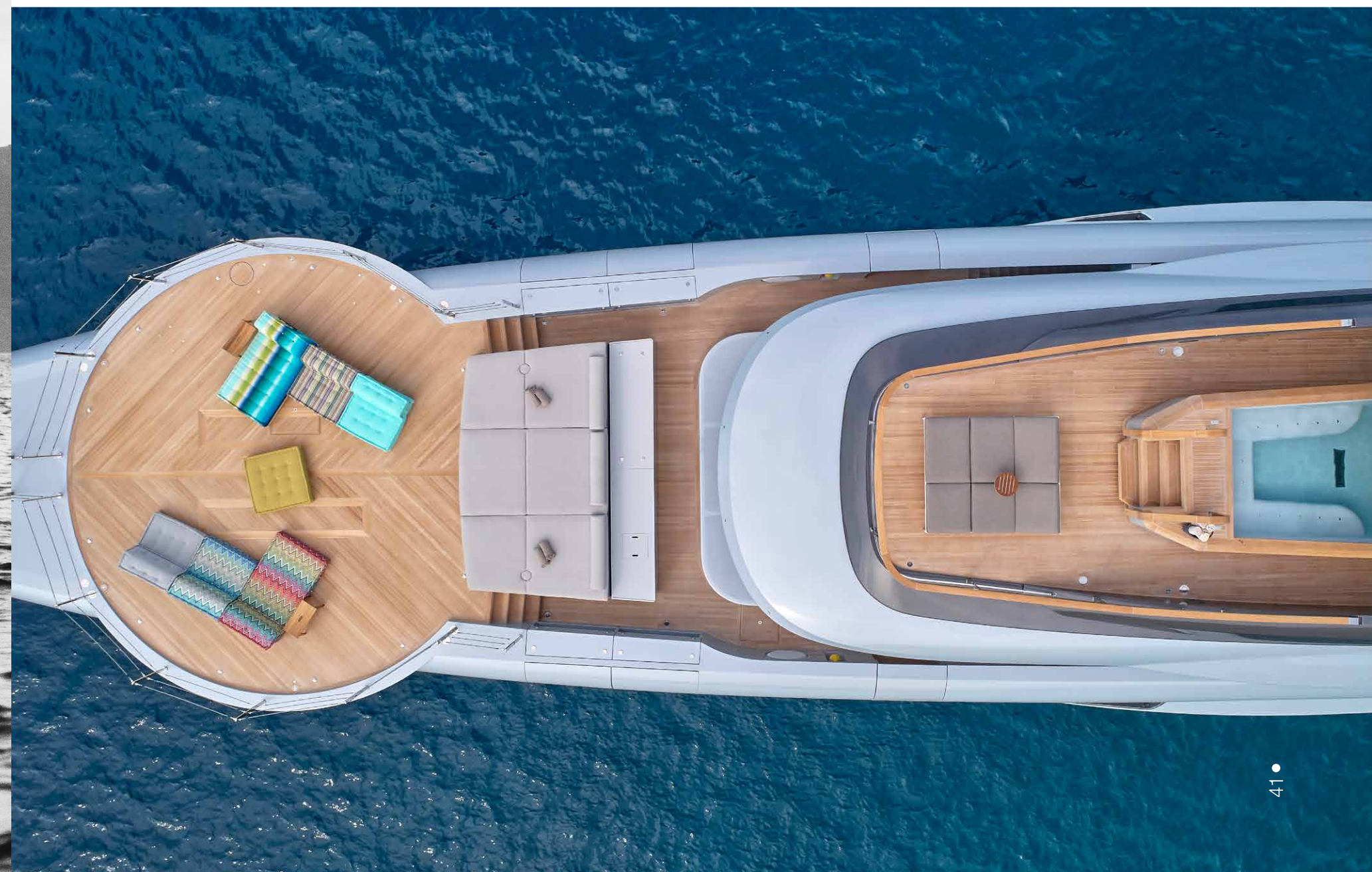
# Admiral 55m

# GECO

Photos: Admiral Media | Words: KL Turner











### **Admiral's Fresh Take on the Megayacht: 55m S-Force Geco**

There's a new flagship for The Italian Sea Group's iconic Admiral Yachts division. Their 55.2-meter/181-foot motor yacht Geco is fresh, dynamic, and unconventional, surpassing all expectations in this initial S-Force project collaboration with Arti Director for the Group, Architect Gian Marco Campanino.

Every element is as simple as can be, but no simpler, imparting a divine sense of contentment, fashioned with a luxurious yet minimalist hand. Almost as if Geco knows her cool factor is off the chart, this intelligent yacht presents a collection of beautiful new design elements, ensuring her status well into the future.

### **The Exterior Profile: Bow Heliport and Full Beam Beach Club**

Launched August 6 of 2020, Geco's standout features identify with casual cool, port to starboard, and stem to stern. Taking some design nuances from high-end supercars, exterior lines flow with a silver monochromatic palette and oversize, uninterrupted glazing on the main, upper, and sun decks. Rounded curves and brilliant chrome give the yacht a sensuous appearance in harmony with the sea.

The bow deftly balances a touch-and-go heliport with expansive views, offering up its space to open-air socializing. From al fresco dancing, refreshing exercise sessions, movie viewing, or simply taking in the glorious view, the space is massive and invites entertaining in a big way. Hovering aft, an extra spacious sun pad lounge is flanked by stairs to port and starboard for an exhilarating review of the surrounding sea. Tender and toys are stowed below the helideck, accessible via port side door panel.

Looking toward the other end of the yacht, a clever open-stern beach club offers a unique, glass-walled, full-beam sunning area, with an innovative extendable step that gives guests instant and easy access to the sea. The vertically louvered, forward slanted glass panels protect against wind, maintaining an exquisite view. The teak decking, laid long, emphasizes the spacious deck. Loose furniture, a BBQ grill that stores behind the transom, and day head with shower are tucked unobtrusively nearby. Recessed lighting and a clean, stylish nameplate put the exclamation point on chic.

The unique extendable step platform continues the connection with the outdoor environment, simplifying boarding the stylish tender, the Evo 43 Khaleesi. This 40-knot cruiser is equipped en suite, and the cabin ensures delightful days of play on the water, heading to explore small islands, or perhaps even speeding off to the next destination without waiting for the parent yacht to prepare for departure.

Toys stored for guests there include jet skis, sea bobs, fly board, Jet surf, water ski and wakeboard equipment, inflatable jet ski dock, inflatable water slid, kayaks, SUPs, snorkel and dive equipment, e-bikes, and a 6m ZAR tender, in addition to the exceptional EVO 43 Khaleesi.











### The Main Deck: Breathtaking Dining, Idyllic Master Stateroom

From beach club stairs to both port and starboard, guests enter the main deck grand style, displaying a large sofa seating area aft, leading to the raised platform, 12-seat round dining table. Serving as a transition from the outdoor deck to the indoor salon, 300 crystal rods drop to varying lengths over the dining table. With an angular cut, the stunning chandelier is hand-fashioned by Czech artisan Pavel May at Preciosa. Showering the space with an amber wave of light resembling candlelight, the fixture provides perfect illumination. Retracting glass walls offer weather protection. The platform delivers a decidedly six-star experience, especially when serving up a Michelin-worthy feast from Greek chef Panagiotis Flakas.

Forward to the dining area, guests enter the main deck salon, brilliantly outfitted in leather, marble, and contemporary lines. Ample pillows adorn the fawn-colored, high leg sofas, while plush cream area carpets show off beautiful dark wood flooring around the perimeter. The salon is designed to be quieter, and can be darkened for clear movie viewing. Forward of the salon and aft of the owners' cabin fully forward, stairs to lower deck staterooms and upper deck bridge are positioned to starboard, with a galley to port.

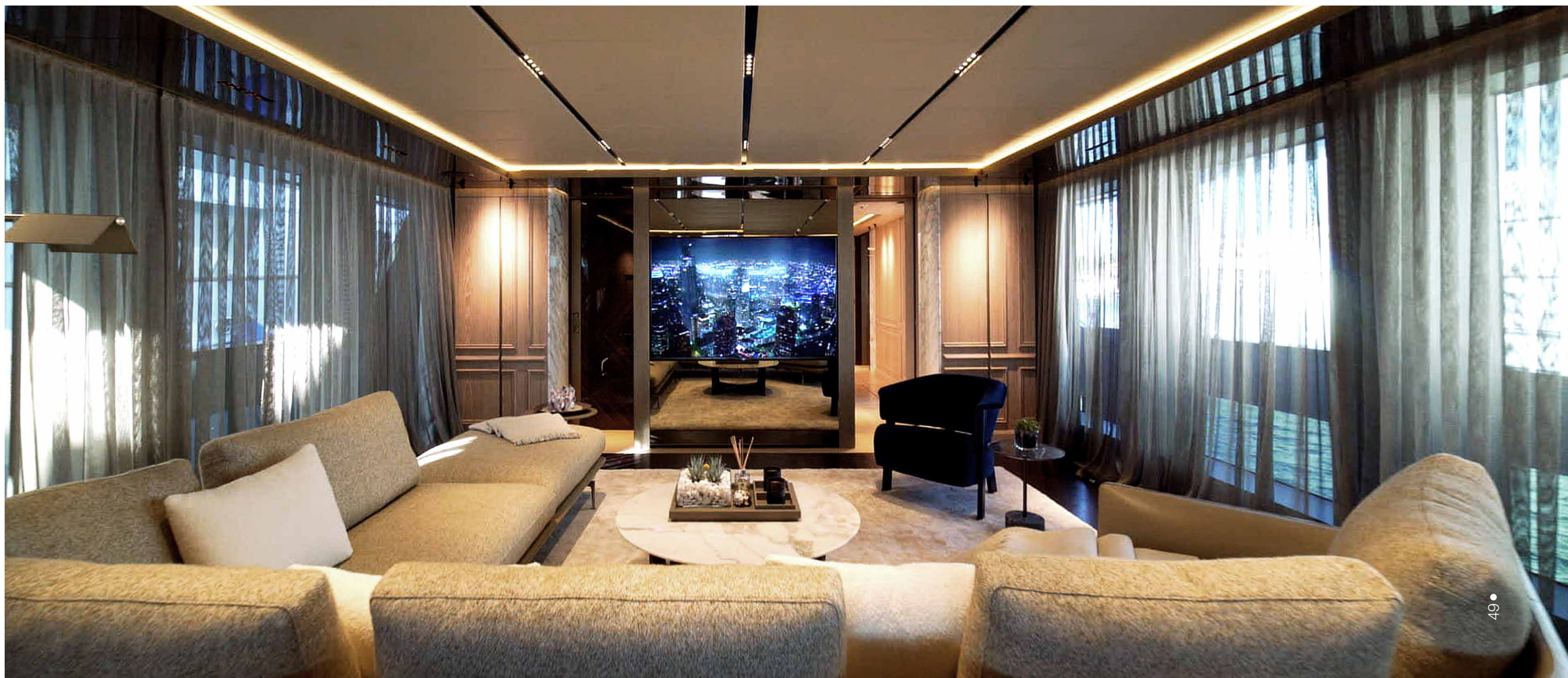
The full-beam master stateroom on the main deck quietly displays the ultimate mix of luxury and sport. Trim lines in luxurious creams and neutrals are complemented with exquisite materials embracing bleached white oak, dark Macassar ebony, dark walnut, beautiful Wengè, Calcutta marble, and richly bronzed taps, fittings, and fixtures. 3D printed leather walls add to the hushed posh environment. Furnishings from iconic Italian brands like Poltrona Frau and Ceccotti underscore the streamlined Italian design. Cabinetry with classic French boiserie softens the edge.

### Bridge and Upper Deck: Indoor/Outdoor Bar Assures Fluid Entertaining

Fully forward on the Upper deck, the wheelhouse is well-equipped with a full range of navigational equipment and top-of-industry technology, not to mention one of the best viewing areas. The en suite captain's cabin is directly aft, peacefully and quietly distanced from the entertainment areas.

From a central stair to starboard, guests can go from the main deck to the upper deck to enjoy one of the most beautiful bars ever installed on a superyacht. An 18-foot slice of mocha oak and backlit onyx stretch from the outdoor deck to the indoor salon, seamlessly connecting indoors to out through sliding glass doors. A round dining table for twelve is positioned aft of the bar, joined by large sunning pads, sofas, and tables further aft. Perfect for a cocktail hour, wine tasting, or simply socializing, the arrangement of bar chairs and freestanding seating encourage casual conversation and comfortable relaxation.

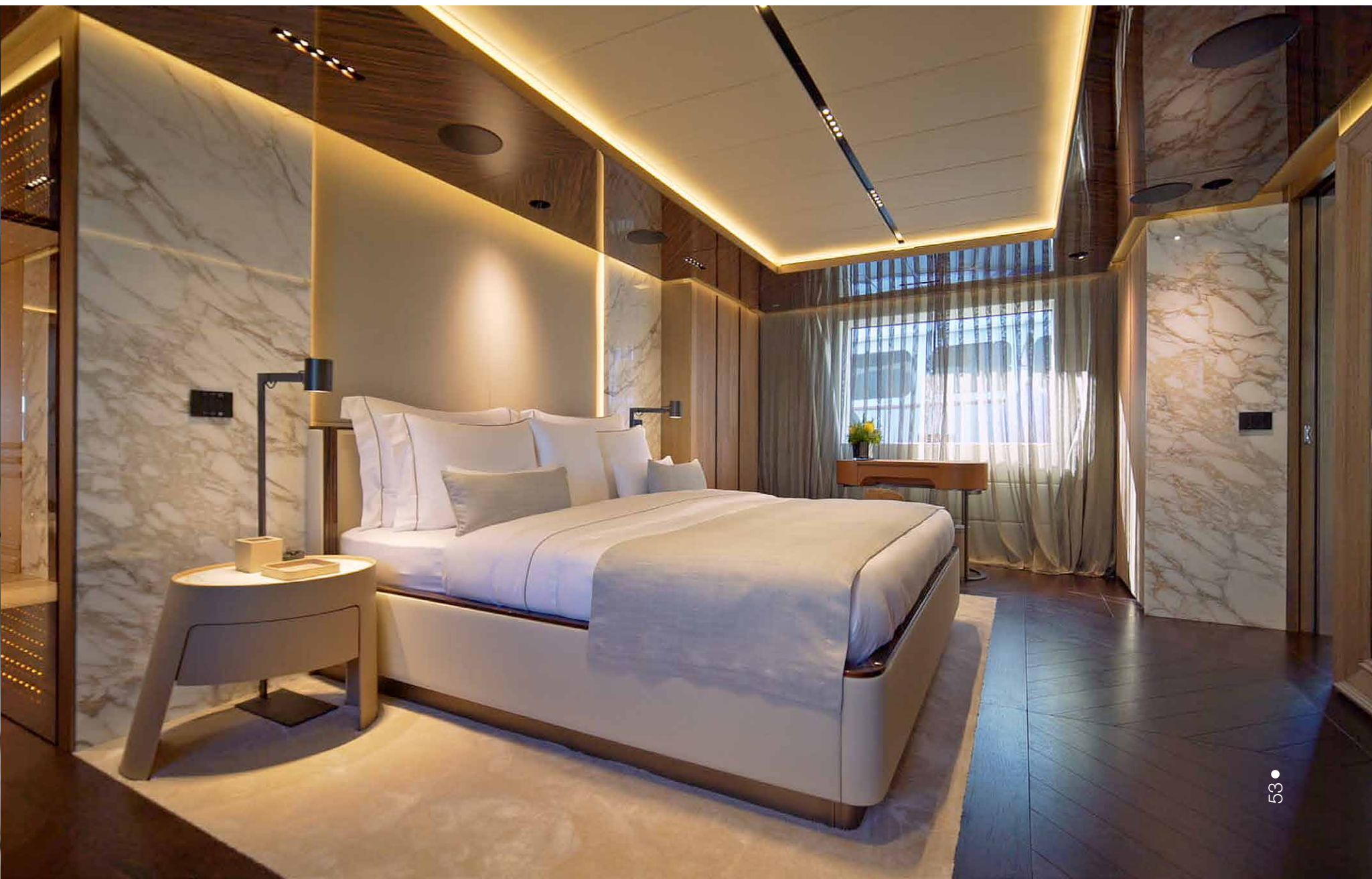
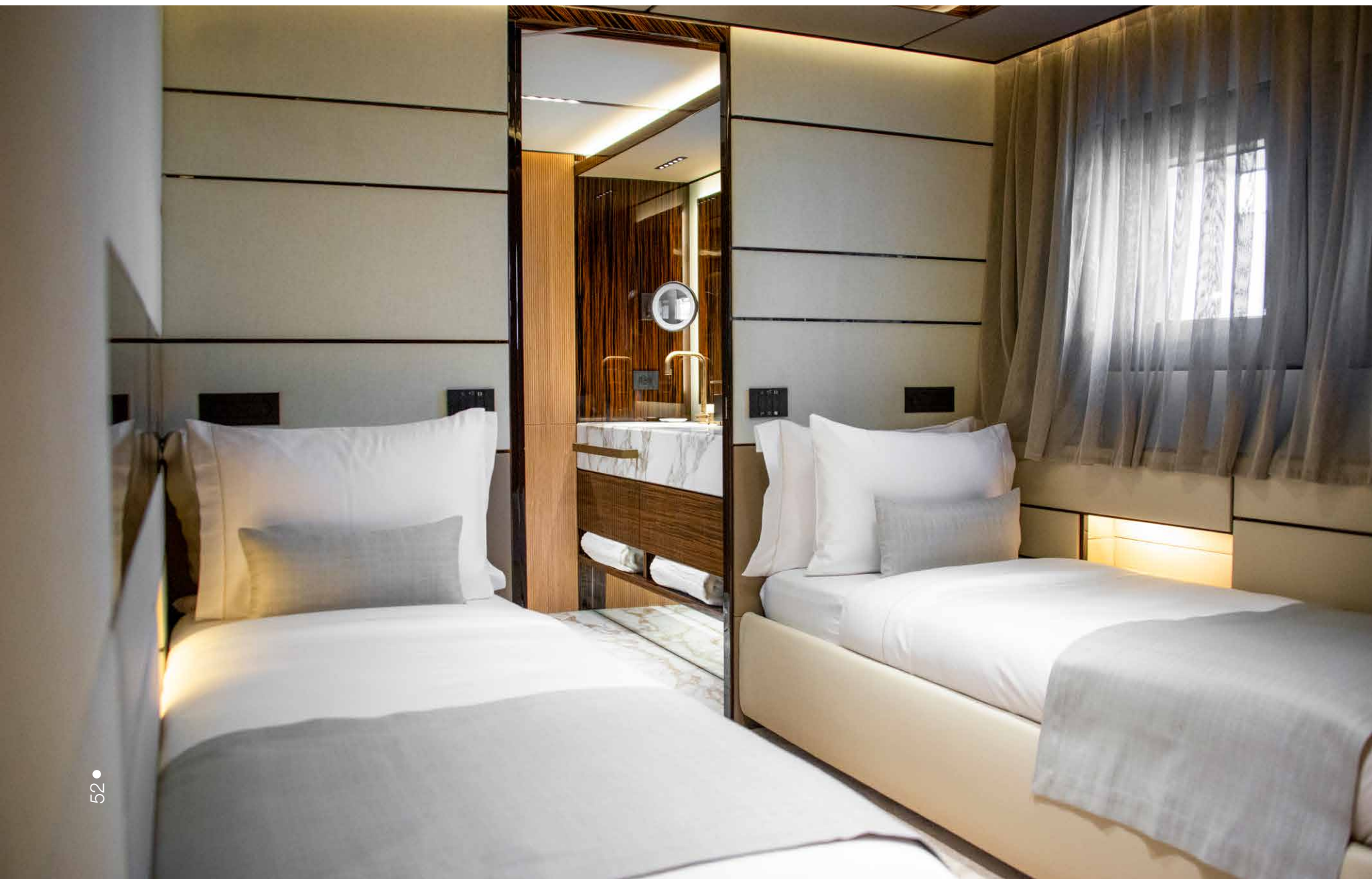
Forward of the bridge, a large sunbed faces the helipad, perfect for enjoying a sundowner cocktail followed by stargazing to infinity.



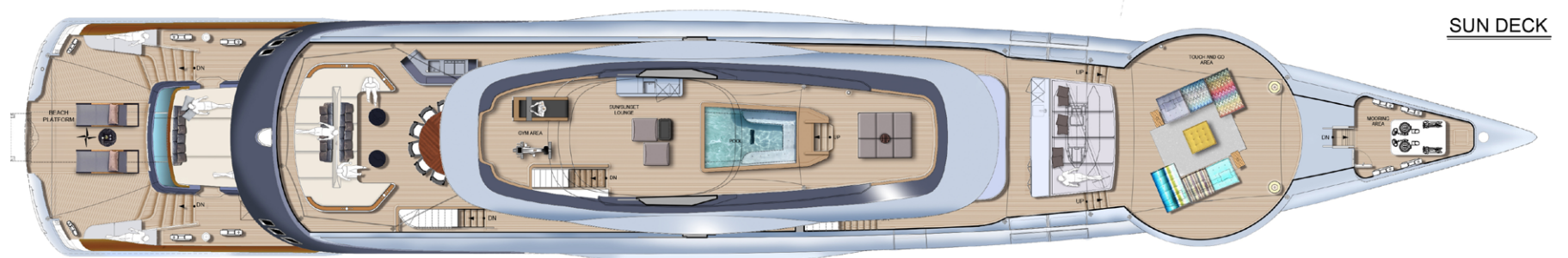




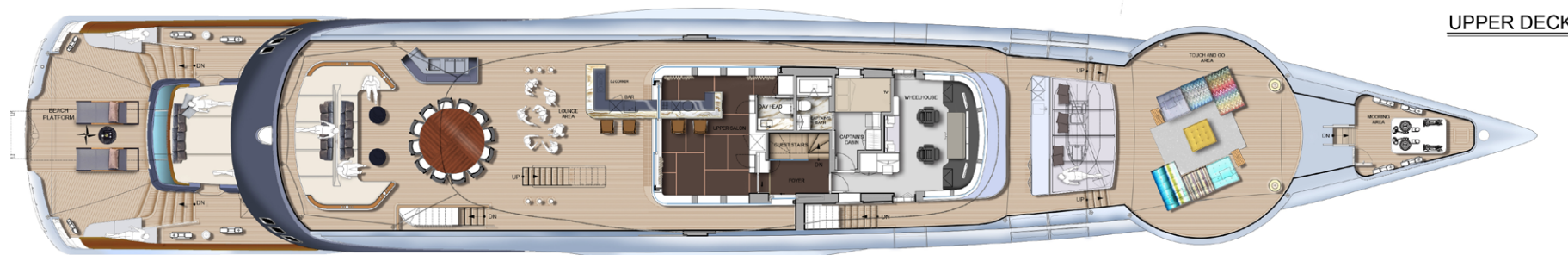




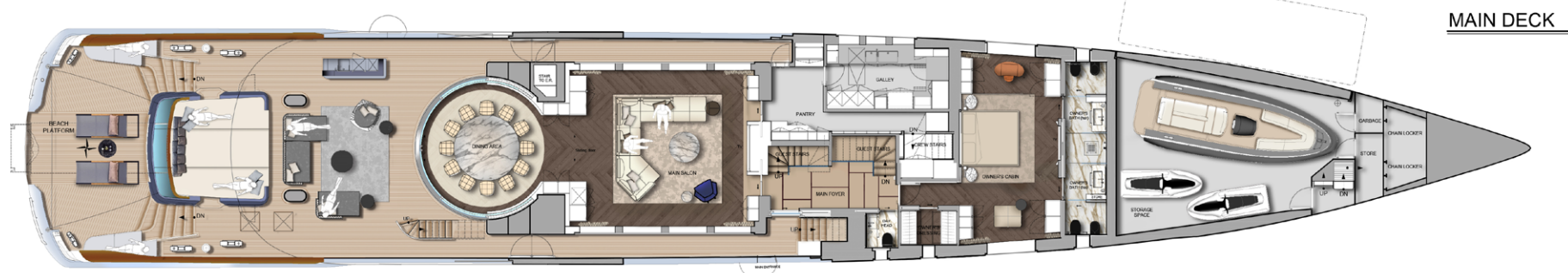




SUN DECK



UPPER DECK



MAIN DECK



LOWER DECK

### The Sun Deck: Salutations and a Leisurely Swim

Sun pads and a generous hydromassage spa pool take center stage on the sun deck, providing a private space also equipped to exercise in the fully-equipped gym, protected by the hardtop above. Accessed by a starboard stair, guests are welcomed to this full-on entertainment level with all the luxurious materials and Italian interior style present throughout the yacht.

### The Lower Deck: Light, Bright, and Beautiful

Forward of the beach club, the engine room is separated by bulkheads. Amidships, just forward of the engine room, the full beam VIP suite bath is positioned nicely, with the bed and sitting areas further forward. A hallway connects the VIP suite to the upward stair, passing by the two doubles and two twin cabins. All find themselves outfitted similarly, with marble, luxurious woods and materials, stylish accoutrements, and an understated neutral palette that is both sophisticated and calming.

Forward to the guest areas, the crew quarters find an attractive crew mess and lounge with 6 cabins for 12 crew.

### Facts and Figures: What Makes Geco Tick

In order to give guests the ultimate megayacht experience, Geco is designed without the mechanized devices so plentiful on many contemporary yachts. Keeping it simple was key to making the yacht very livable over long itineraries.

Simplicity is what makes her comfortable, but her high-tech behind-the-scenes operational gear is what keeps guests safe, happy, and comfortable at sea. That includes zero speed stabilizers, two 150 kW 400V 50Hz generators, and two Caterpillar C32 ACERT 1418 kW @2300 rpm engines, powering Geco to a cruising speed of 16.5 knots, with a maximum of 18 knots. Geco flies under the Greek Flag, but can travel a 3,500 nautical mile range when operating at 10 knots.

A semi-displacement yacht built with 130 tons of aluminum, taking 300k man-hours from start to finish, Geco's owner stated a simple brief: build a super cool yacht that is unconventional and dressed in luxurious minimalism for spending long periods at sea. Quite pleased with the outcome, the owner expressed that the yacht, which took about 24 months from handshake to delivery, was facilitated largely by the hull already under construction, along with great work by the Italian Sea Group Founder and CEO Giovanni Costantino with global managing partner of IYC Michel Chryssicopoulos.

### About Admiral

Admiral Yachts was founded in 1966. The company is known for classic, elegant yachts that carry a high level of prestige for their design and craftsmanship. Acquired by The Italian Sea Group in 2011, they have launched 147 yachts, and overseen countless refits. Capable of working with vessels of up to 100 meters, the Admiral shipyard is located in Marina di Carrara flanked by the Apuan Alps and the Ligurian Sea.

### Parent Company The Italian Sea Group

An international star in the yachting industry, The Italia Sea Group embraces Tecnomar and NCA Refit along with Admiral Yachts. Bringing the brand to the world and introducing the Italian lifestyle through meticulous craftsmanship, high-quality materials, and an innate passion for design and the sea, the professional team at The Italian Sea Group has launched 584 yachts since its inception in 1942.

In addition to building new yachts, The Italian Sea Group performs service and refits of motor yachts over 60 meters. The Group employs 1000 workers over 100,000 square meters of production space. In August of 2021, The Italian Sea Group was admitted to the prestigious SYBAss organization, helping to promote, regulate, and maintain professionalism in the industry. ⊕

### Specifications

» LOA	55.2m
» Beam max	8.6m
» Main engines	2x CAT C32 Acert (1418 kW @ 2300 rpm)
» Generators	2 x 150 kW 400V 50Hz 3ph
» Max speed	18 kn
» Cruising speed	16.5 kn
» Max range @ 10 kn	3.500 nautical miles
» Fuel capacity	63,000 l
» Bow thruster	CMC 110 kW Electric 400V-50Hz-3ph
» Stabilizers	CMC Electric fins "zero speed"
» Max guests accommodation	12
» Max crew accommodation	12
» Fresh Water	16.000 l







*If you can dream her  
We can build her*

THINK - DESIGN - BUILD - ENJOY

NAVIS



Contact Pablo Ferrero +1 786 406 6111 [info@navisyachts.com](mailto:info@navisyachts.com)  
Let's start building your dream.



NAVIS™  
YACHT DESIGN & LIFESTYLE





Southern Wind Shipyard 32m

TANIMHA

Photos: Southern Wind Shipyard Media | Words: Jodie Oacks









#### **Halcyon Roots Meets GT Style**

Grace, style, and speed – this is what happens when two worlds collide, and a slick sailing yacht meets gran turismo synergy. Out on the water, the 105-foot Taniwha takes its inspiration from the classic GT racing car, a beautiful blend of clean lines, balance, pedigree, and performance. A wonder in white with dreamy dark blue sails holding taut in the breeze, Taniwha takes yachting back to its Halcyon roots where the open water and the horizon aroused a sense of freedom like no other.

Nauta Design has truly pulled off something impressive with this lofty racing style aesthetic paired with grounded structural science. As Massimo Gino of Nauta Design noted, “This new deck design has an innovative and clean look that is driven by the methods of composite construction and by racing yacht styling. We think that our Gran Turismo design will be a successful new style because it rests on a solid base of concepts which are the expression of a pure design”.

#### **Classic Charisma Meets Forward Thinking Finesse**

The name Taniwha oozes with magic and mythology. It comes from the Maori and is a word used for guardians of the rivers and seas that were called home. One glance at the silhouette of sails against the blue water and you know that Taniwha was born from a pure love of the ocean. Farr Yacht Design were responsible for the naval architecture of this speedy number. With racetrack delights in mind, they created a yacht that blends the world of classic charisma with forward-thinking finesse.

There's a full carbon hull, a mast and boom made from high modulus carbon, and a lifting keel that comes down from 12.5ft to 19ft. Everything has been designed with lightness and play in mind as this yacht is here to cross the horizon with time on its side. A minimal coach roof and single-level wide cockpit grant the yacht its streamlined and sleek shape, adding to its ability to cruise with the light-footed lore of Hermes across the surface of the water.







### Finding Solace in the Feeling of Space, Sea, and Sky

The solid teak deck is one of the crowning glories on this yacht that echoes with a pure love for al fresco ocean living. Seamlessly bending parallel from the hull to run along the interior side of the deck, the result is a spectacular foundation for enjoying every inch of outdoor space. Seating is more than ample, and the layout has been designed for as much space and socialization as you could wish for. The honeyed deck sets the mise-en-scene for comfy cream-colored sprawl spaces on either side scattered with nautical blue and white cushions for kicking back, gazing at the surrounding sea-views and sipping chilled glasses of Chablis in Sunday fashion. At night the LED rope lighting brings a note of romance, especially when casting a soft glow on the inky black waters. This is a deck that seemingly stretches on for miles – wherever you flop, you can be sure that each spot encompasses the feeling of space, sea, and sky, so you feel fully immersed in the grandness of mother nature.

In the interest of keeping everything as light and flowing as can be, even the details on deck such as the rails, pad eyes, fairleads, and cleats are all crafted from titanium. The mast and boom fittings are also titanium, as is the submarine anchor system. Forget any kind of weighty wonder, not even a tender garage will disrupt the flow of Taniwha thanks to the clever creation of an underdeck fold-down storage solution. This was possible due to tweaks being made to previous SW105 DS and RS models such as moving the helm positions closer to the gunwales, along with the cockpit and reduced coach roof changes. Not only have these changes allowed for that tender garage to be tucked away but it's also given way for a sunbathing area below the cockpit and for a larger eyeline of the ocean for drinking in those surging saltwater and sunset views.

### Inspired Interiors for the Endless Golden Hour

Southern Wind has created a heavenly space inside. The salon is a vision of soft liquid creams, pale sea-capped blues, and blonde and honeycomb wooden tones utterly infused with light. Generous skylights keep the sunlight pouring in. There are several seating areas with plump sink-down sofas and tables for relaxing in shaded comfort. The magic of mapped-out lighting brings its golden touch – offering the potential to turn every moment into a golden hour. There has been a concerted effort to pick environmentally friendly materials. The design studio considers Taniwha's interiors to be state of art with tremendous thought in each and every detail. Even the berth bases have been designed with sophisticated slants and carefully considered curves to ensure that no room is forfeited when it comes to stateroom space. The fabric-covered wall panels are a perfect match for the shades of teak, lending an impression of softness, light, and volume to plump up spaces and lend warmth and the subtlest texture in style. The result is sheer elegance.

There are four staterooms that can accommodate eight aboard Taniwha, the perfect number for intimate sailing sojourns. The owners' cabin forward is cool, fresh, and homely – all while carrying that lightweight vibe that makes Taniwha seem as airy and light as a feather as she courses across the water, carving tracks to whatever destination takes the owners' fancy.







  
**TANIWHA**









### Pleasure That Doesn't Come at the Expense of the Planet

The same color schemes seep from the salon to the stately cabin space, with warm honeycomb and teak tones, meringue whipped creams, the softest cashmere greys, and whispers of sailor stripes and blues to complement that classic yachting experience. Ensuite facilities are darker and richer in tone and lifted by alabaster and ivory. The oversized walk-in shower is a steamy dream for washing saltwater away after a day of swimming and diving from the deck.

Aft of the salon and there's two cabins, a VIP cabin with beautiful ensuite facilities, and a second twin guest cabin also with ensuite. Forward of the salon, you will find a studio space with a sink-down sofa and generous desk, which makes for an excellent floating office or can be transformed into another double cabin for when more guests come to play.

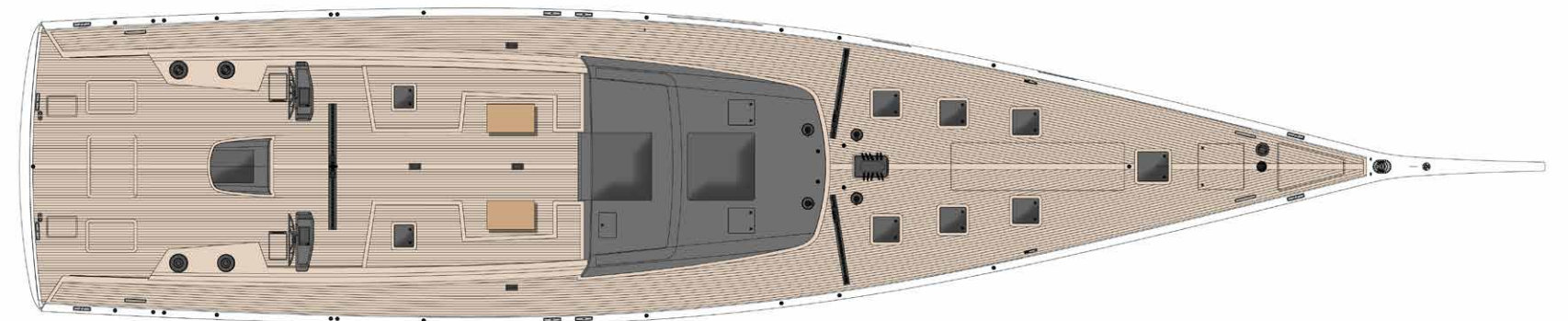
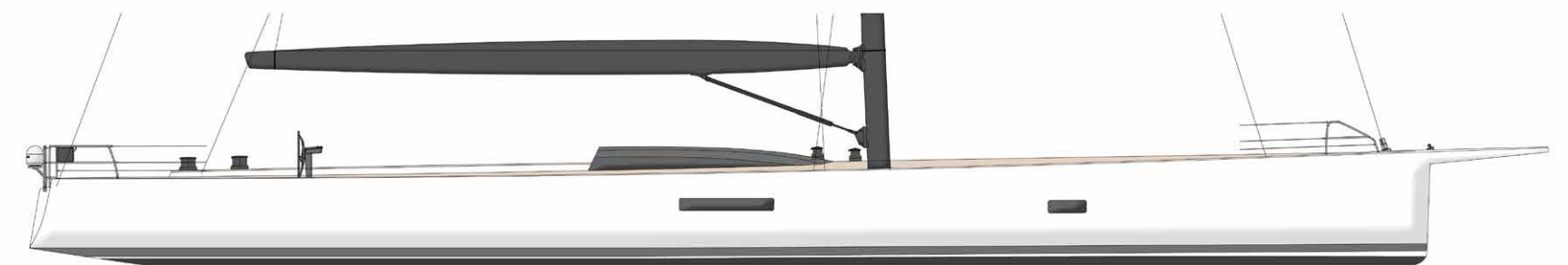
The challenge of choosing lightweight furnishings that maintained that must-have high-quality finish and homely well-tailored vibe that makes yacht living such a pleasure has been surpassed in every inch of Taniwha's inspired interior. As we move forward into the future, where pleasure shouldn't come at the expense of the planet, it's important to see the industry paving the way for eco-centric solutions.

### Capturing the Purest Form of Sailing

Sporty and sleek without having to compromise even a second of custom yachting style, the GT formatting of Taniwha has us hooked. Southern Wind has truly pulled off an impressive feat and has lovingly reimagined a yacht that captures all the pleasure and passion of the timeless yachting experience. There are many reasons to want to welcome a yacht into your life, but Taniwha reminds us of the purest form of sailing lore. It's a boat that murmurs of sun-splashed warm teak decks, cool interiors that celebrate the classic culture of being on water, and the captivating energy and spark of excitement that comes with a clean horizon and a speedy sailing boat that can go anywhere your heart desires. Home is where you sail it, and this is the statement that Taniwha inspires in us all. ⊕

### Specifications

» LOA	32.27 m (excluding bowsprit)
» LWL	29.44 m
» Beam (Max)	7.31 m
» Draft	3,8 - 5,9 m (lifting keel)
» Displacement	66.200 kg (lightship IRC)







67105



Azimut 38m

# GRANDE TRIDECK

Photos: Azimut Media, Federic FF | Words: Emma Hersh











Bringing together state-of-the-art technology, research, and contemporary design makes the Azimut Grande Trideck a revolutionary triple-decker based on an advanced naval platform to create more intimate contact with the ocean. Grande Trideck is the largest yacht ever built by Azimut and features the signature streamlined design and dynamic external lines that are hallmarks of the Azimut brand.

The flexibility and versatility of this yacht mean that there are different layout options available, and the vessel can be configured to include 5 or 6 cabins, with 4 located on the lower deck. Alternative layout options mean that Grande Trideck can be designed to include a brightly lit VIP cabin on the upper deck, offering incredible views of the ocean thanks to expansive windows. The yacht's layout breaks from tradition with the inclusion of elements like an extra floating sea Sea View Terrace terrace and hybrid living spaces.

In an innovative and original interior design concept, new areas have been created throughout the Grande Trideck to support a less formal lifestyle that brings one closer to the sea. The 3 decks are actually 3 decks + 1 with the addition of an ingenious mezzanine sea view terrace at the stern. This revolutionary design concept brings new and wider spaces and thanks to some ingenious engineering, the sea view terrace appears to be suspended magically in mid-air. With four sun terraces to enjoy the open sea and outdoor relaxation and stylish versatility, from top-down to sea level Grande Trideck is unique in size, originality, and function.

When first stepping aboard Azimut Grande Trideck, guests are first greeted by the sweeping central royal staircase, which leads to the Sea View Terrace. The suspended 30-meter square deck creates the impression of being suspended aloft and is designed to facilitate entertainment and provide a comfortable gathering place for guests. C-shaped seating mimics the exterior perimeter shape of the deck, and the glass balustrades inspire the sensation of being at one with the open ocean. Open views can be enjoyed from the deck at any time of day, and the area adds an extended and spacious feel to the deck. A few steps down from the sea view terrace is a flexible indoor-outdoor space connecting to the cockpit. This Private Patio is perfect for eating or relaxing in an indoor environment and enables a smooth transition between the interior and exterior of the deck.

On Grande Trideck each level is staggered, with the decks creating a cascade effect and each space has been carefully created to be unique in its design, function, and features. From top to bottom, Grande Trideck's deck areas are ample and spacious, and outdoor spaces are plentiful with a Sundeck, Sea View Terrace, and expansive Beach Area.











Beyond the private patio, the Grande Trideck's main salon is located. On entering this contemporary modern space, the initial impression is of an open and bright living area. Large floor-to-ceiling windows provide stunning ocean views from every angle creating a real synergy with the outdoor world. Highly lacquered mahogany inserts add a touch of elegant gleaming style, and soft furnishings in carefully selected muted colors complement the space without distracting from the outdoor vista. The salon is designed to encourage conversation and convivial get-togethers with large sweeping sofas and comfortable armchairs that have been crafted in an almost futuristic semicircular design. The centerpiece of the room is the molded offset semicircular coffee table with raised lip edging. Interior pieces have been designed by Achille Salvagni, and each form and shape has been reimagined and crafted from carefully selected materials to exude quality and style.

At the rear of the salon and with entertainment in mind, a large bar cabinet has been thoughtfully placed where it can adequately serve both indoor and outdoor areas. The solid bar cabinet is faced in shining lacquered wood and is topped with a gorgeously patterned Carrara marble counter. The salon's wooden floor adds natural elements and warmth and includes brass inserts to highlight the herringbone pattern. An asymmetrical white ceiling with circular elements is reminiscent of moon craters and further encourages the futuristic but yet relaxed feel of the room.

To the fore of the main deck is the full-beam owner's suite; this ample space is illuminated with a large walled window allowing light to cascade in and lift the muted natural tones of the bedroom space. Benefiting from a lobby and ample dressing area, the bedroom is decorated using clear, clean tay wood and neutral Cardoso stone flooring. The subtle natural materials are accentuated and contrasted with highly polished mahogany wood inserts and brass details, hinting at a faintly nautical undertone. Carefully placed LED lighting adds a floating effect to the rooms' furniture pieces, highlighting the two suspended dressers and breakfast table, which is flanked by two ultra-modern armchairs in an almost ethereal fashion.

A large sliding panel door opens between the master suite and bathroom area creating a natural extension of the bedroom space and reveals a gleaming round brass freestanding tub. The Cardoso stone flooring extends from the bedroom into the bathroom area, creating a flowing unity to the master suite. Bathroom countertops are finished in the same Cardoso stone, and walls are embellished with mahogany inserts linking the bedroom and bathroom spaces together with an unbroken synergy. Mirrors and lighting create the impression of an even larger space and serve to highlight the softer elements of the room.











Grande Trideck's upper deck houses the formal dining area and sky lounge. Sweeping sofas replicate the design used in other parts of the ship, and the dining space can be used for eating and entertainment or converted to a cozy viewing area by way of a 55" screen pop-up flatscreen TV. The easily accessible outdoor space of the upper deck features an open-air dining area and comfortable seating for enjoying alfresco dining and conversation. The white lacquer dining table can be extended to accommodate up to 12 guests and provides a beautifully situated outdoor gathering place. The forward area comprises a sprawling lounge space featuring plentiful sun loungers as space for guests to relax and sunbathe. A sparkling whirlpool tub is placed before the lounging area for easy access and can be used day or night for a rejuvenating soak while enjoying gorgeous panoramic ocean views.

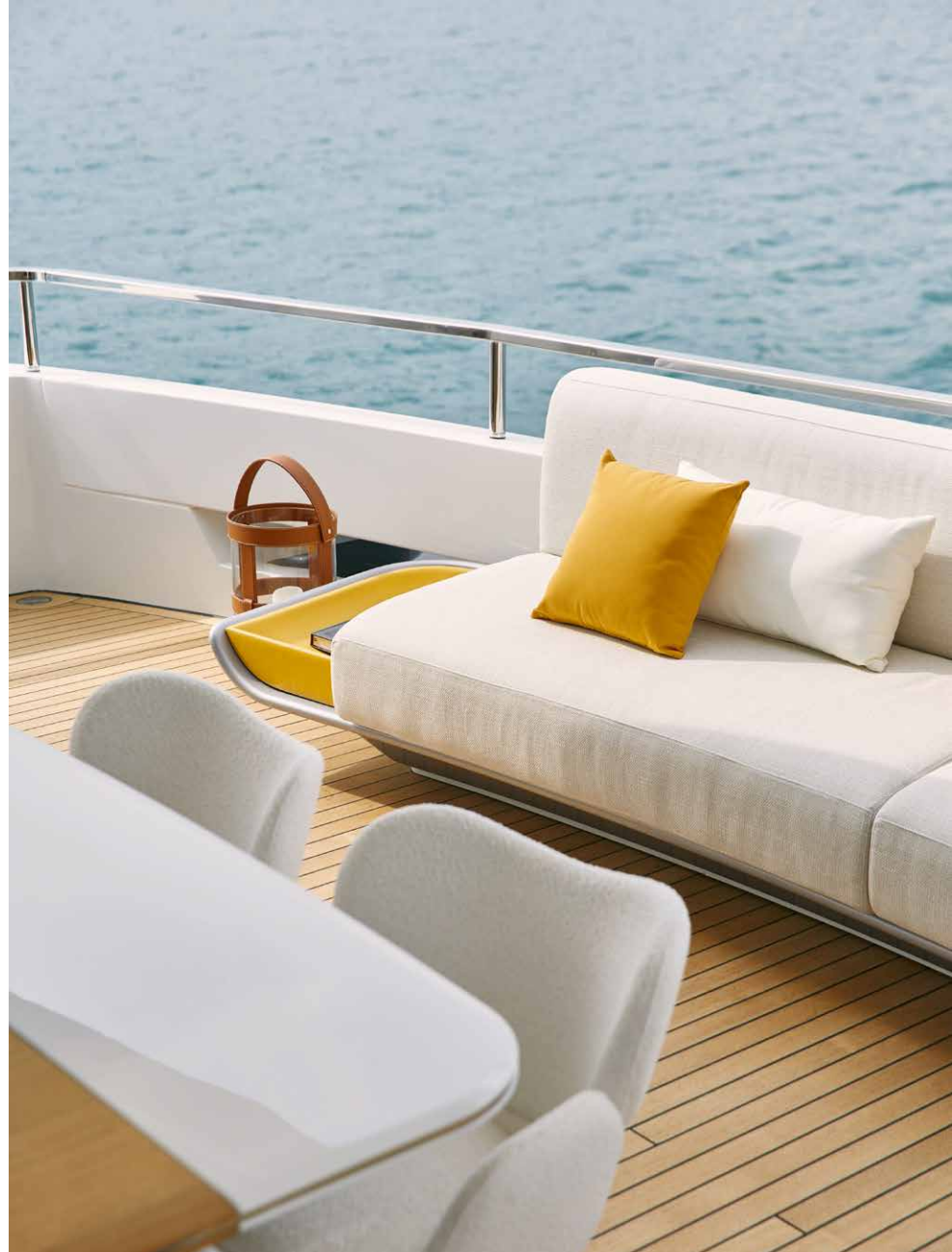
Grand Trideck's lower deck is graced with an expansive beach area with ample space for guests and comfortable seating. This lower platform is designed to give the feeling of direct connection with the ocean and this open space has over 30 square meters of room to customize and enjoy with full light openings to port and starboard that allow daylight to flood in and keep the beach area cool and airy. Behind the beach area is the garage with room for tender and personal watercraft, and the remainder of the lower deck is dedicated to the engine room, guest cabins, and crew cabins.

The yacht's command center contains impressive navigation tools and equipment for the smooth operation of Grande Trideck. The latest in nautical technology has been incorporated throughout the vessel to aid and enhance travel. Power management is by way of a SeaEnergy automated system to perfectly balance power consumption and performance while optimising efficiency. Comfortable and effortless cruising is provided by an integrated Argo software system which minimises waste and stabilizes the yacht's fins in an intricate balancing act to keep movement as smooth as possible when sailing on auto-pilot. Grande Trideck also offers a Hotel Mode; this addition means total silence and zero emissions, perfect for when anchored in calm waters. This power-saving feature uses a lithium battery to operate the yacht's main utilities for up to 4 hours by day, 8 at night; when stationary without the need for generator power. Further reductions in power consumption are achieved by the second generation D2P hull, which benefits from advanced technology integrations. FEM analysis, CFD software, and form optimization tools promise the utmost in efficiency. Grande Trideck's dynamic and streamlined 38-meter structure is covered in light carbon fibre, making the yacht fast and fuel-efficient. Dual MTU motors are capable of propelling the vessel at speeds of 24 knots, and at a cruising speed of 12 knots, can cover a range of 1700 miles. The low center of gravity combined with the hull double chine and bow wave piercer helps reduce displacement consumption and gives optimal stability in rough seas.









All living spaces aboard Grande Trideck have been examined and transformed into multifunctional areas that redefine the form and functionality of each area. Each carefully designed element provides the maximum in elegance and style while incorporating multi-purpose facets to remove the usual restrictions and conformity.

Many areas can become the natural extension of the previous area, creating a fluid and almost seamless blending of each. This flowing and harmonious design is complemented by the choice of colors, materials, and furnishings. Uniquely styled furniture pieces have been used to enrich the environment and add elegant aspects to the yacht's interior design. Grande Trideck's advanced technology and never before seen use of space, provide truly innovative design features in this flagship's rule-breaking and stylistic redefinition of onboard living. ⊕

### Specifications

- » Overall length 38.22 m
- » Maximum beam 7.98 m
- » Draft at full load 2,05 m
- » Displacement (at full load) approx 190 t
- » Cruise speed up to 20 knots
- » Fuel tank capacity 22,600 l
- » Water tank capacity 4,000 l









Inspiring a Lifetime of Rare Experiences



Celebrating a quarter century  
of sustainable luxury  
MALDIVES | THAILAND  
[soneva.com](http://soneva.com)



LIFESTYLE



Aston Martin

DBX

Photos: Dominic Fraser | Words: Janine Devine





Wines, cheese, whiskey, and art. Things get better with age, they say. Automotive brands are no exception, although competition and innovation emerge as key contributors. Aston Martin, the 106-year-old iconic brand best known for its luxury sports cars, has finally followed ventures into sport utility vehicle marketplace by its competitors. Earlier this year, it pushed the boundaries of traditional British styling and engineering and launched its first: the DBX.

Originally teased in 2019, the branded “makers of beauty” who have long solidified their marque on performance, style, and luxury introduced this all-action, all-terrain model all-new for 2021. Within less than a year, as recently reported by Reuters, the DBX has pushed Aston Martin dealer sales up 224%.

As part of the brand’s vision to further its long history of automotive artistry, in 2015, it announced its Second Century Plan. The DBX model is but the final phase of the three-part scheme to elevate its stature, financials, and portfolio to epic new heights. Hard to believe, but the DBX is an idealized sports family sedan that performs well on just about any terrain or condition, even including a water depth of up to 19.7 inches.

Behind the wheel, all is open and functional. If you’ve driven an Aston Martin before, you’ll be just as comfortable in the driver’s seat here. That feeling of familiarity is intentional and not due to or lack of ingenuity. The steering wheel is completely new, sporting switchgears with paddles to operate the automatic 9-speed gearbox, delivering a satisfying feel of control and mastery. The seats recall those of the DB11, albeit with an abundance of head clearance above and stowage below, along the door interiors, and in the bridged center console, so you never have to worry about where to stow those large water bottles or a tote bag for that quick fridge-replenishing excursion.

Her frameless door glass plus the overhead full-length glass panoramic, combined with class-leading overhead space and leg clearance both front as well as back create unprecedented comfort for all. Those exquisite leathers for which the brand is known are everywhere you look and touch here, along the door panels, surrounding the air conditioning vents both front and back and everyone’s comfort is assured with cooling and heating controls in both the front and rear seats in the 3 zone comfort system will make Gran very content. Perhaps not you nor older kids so much since the infotainment units surrounded in opulent hide up front and in back are not touchscreen. If you prefer being driven, the passenger seats are pitched higher, so passengers enjoy a full visual thrill of the open road ahead.







ASTON MARTIN

AI AML



With decidedly room for five, the DBX boasts great proportions, neither too big nor too small. When the split passenger seats are folded down the 22.3 cubic foot trunk is expanded to a whopping 54 cubic feet to allow stowage of loads of luggage or sports gear, including skis. Add to that gesture control opening of the boot.

A vast array of both dynamic and passive safety features -- some entirely new to the brand -- only enliven the thrill of driving the DBX. These include blind-spot warning, automatic emergency braking, lane-keep assist with lane departure warning, hill descent control, and 360-degree parking camera: all are standard. Also introduced are new features enabling drivers to easily tackle terrains on which an Aston Martin has never ridden. The latest 48V electric anti-roll control system boosts confidence, exerting 1033 feet per pound of force per axle. The new triple volume air suspension and adaptive electronic dampers permit an ability to raise the ride by 1.7 inches or lower it 1.97 inches.

This brings us to peaking beneath that sleek bonnet. The twin-turbo 4 liter V8 engine is a modified version of what you love in the brand's Vantage roadster or the DB11 coupe. In the DBX, it delivers 542 horsepower and 516 pound-foot of torque, producing a top speed of over 181 miles per hour that will propel you and fellow joyriders -- or a demanding family unit -- from 0 to 60 mph in 4.3 seconds.

Aston Martin has put a lot of effort into every detail. Melding the highlights of SUVs with sports cars is a thirsty business, though. You can expect to get 17 mpg in the city, 18 mpg on the highway. Still, the way she takes those corners makes that fuel efficiency forgivable.

With all that excitement below and inside, how does she look? Or rather, how will you look sitting behind the wheel? With the dizzying array of colors available for the brake calipers alone, we won't even go near color options. Like her Vantage sister, the DBX is decidedly sleek and aerodynamic and wholly unlike the typical boxy SUV models planted outside garden centers. From that aggressive-looking grille design and front lip spoiler up to the low roof rails and split-level roof spoiler, back down to the slim LED lighting at the rear with its two exhausts: her lines are super clean and achingly desirable.

She's quite sexy to look at, and you never have to feel like you had to "settle" when you choose her.

Perhaps no other car -- certainly not an Aston Martin -- has ever been so obsessively, proactively researched, and developed. Most wished-for features come standard on the DBX. There is no word on hybrid or electric versions currently, even with the brand's pledge to green 90% of its range by 2030. Aston Martin is teasing a possible third seating row in the model for the future, potentially in 2023. But the DBX is a vehicle that takes you places you'd never consider in a sports car yet hardly resembles a hulking SUV in its understated luxury. It has space for the kids, a dog, some gear, all while delivering a bit of fun. Something for everyone, even refined, retired secret agents. The DBX does it all. 🍷







ASTON MARTIN

MAY California  
41910  
DMV.CA.GOV





losjabones.com

FINE NATURAL SOAP

SEGOVIA · SPAIN



# Celebrating The Artistry Of Peace At AMANPURI, THAILAND

Photos: Courtesy of Aman | Words: Emma Hersh















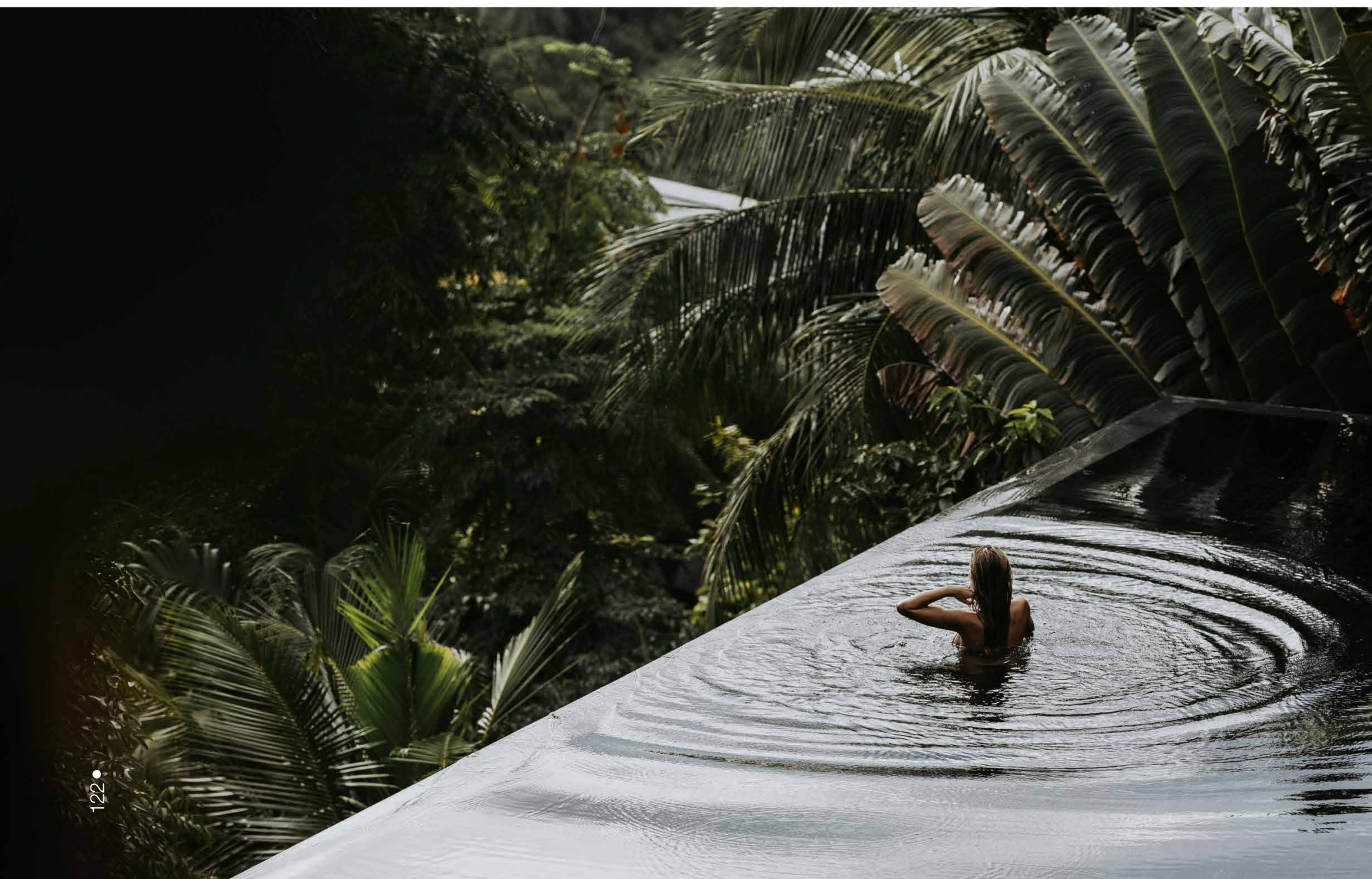
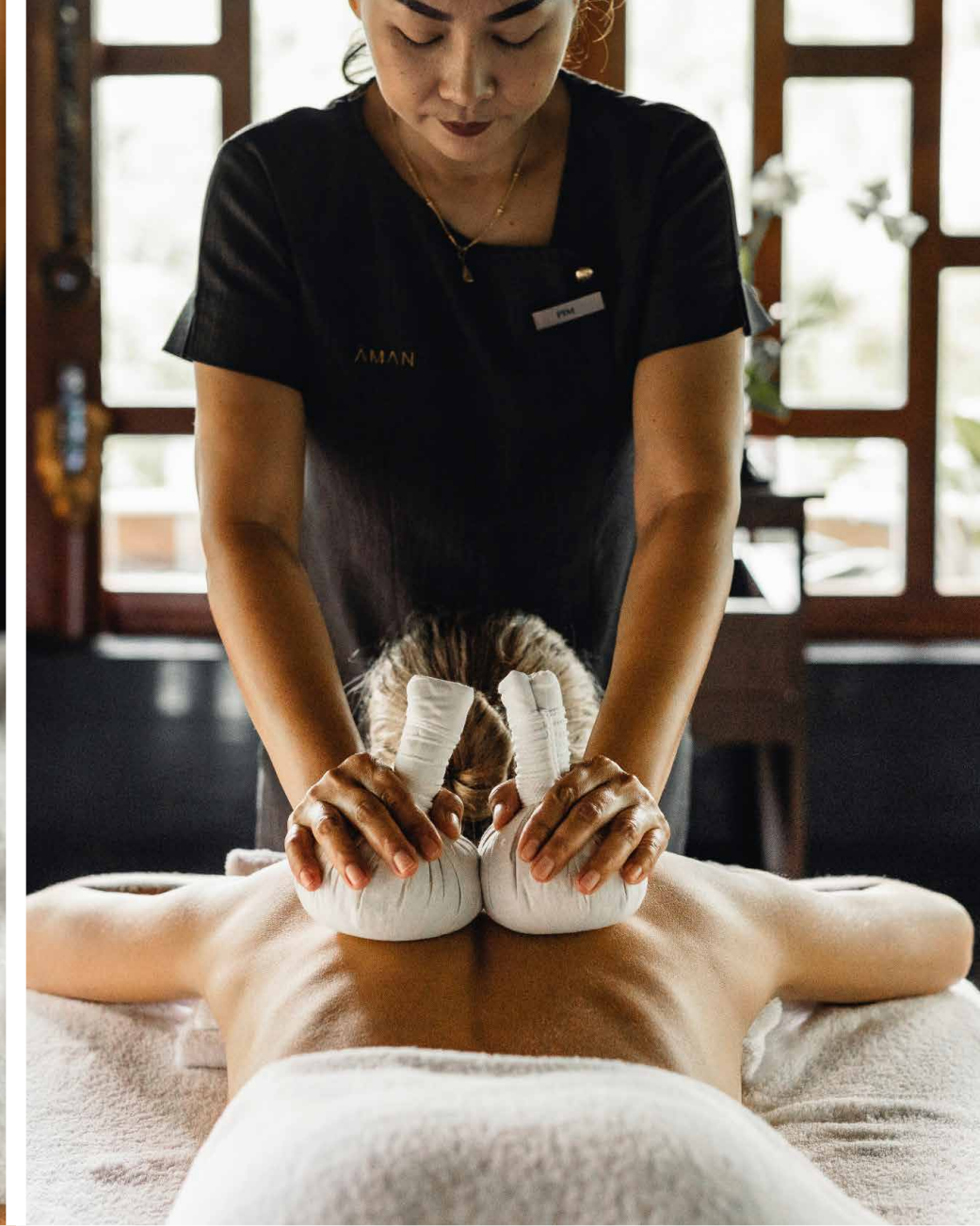
Rising above a stretch of white sand beach on Phuket's western coast, pavilions with ornate tiered roofs nestle amidst lush vegetation. Each sited at a discreet distance; some fitted with private pools, all with salas for outdoor living. Further along, there are larger villas, some up to nine bedrooms, assuring the world-weary more solitude and privacy.

You have arrived at Amanpuri. In Sanskrit the name means "Place of Peace." Within minutes you achieve that elusive tranquility you've been seeking in a secluded setting away from bustling Phuket. For Aman purists, it's said you always remember your first....Aman. And here she reigns, the inaugural resort of the world's most elite luxury hospitality brand. On this former coconut plantation, you find simple buildings of timeless design dotting the hillside. All the way down to the sparkling, turquoise waters of the Andaman Sea. The higher up the hillside you ascend, the more majestic your views. Approach by sea, and the estate, part mirage, part traditional Thai village, slowly reveals itself

Since 1988, Amanpuri has been enticing repeat guests to return and beckoning new ones to explore. The resort births new generations of enthusiasts of Asian minimalism fused with guest maximalism. Here, hospitality is welcoming guests to one's home as close friends, where a negative response to any request is seldom if ever, uttered.

The tiered pavilions housing the public areas, such as the Entrance, library, restaurants, and boutique, surround the centerpiece of the main guest pool, a dramatic feature tiled in the deepest blue mosaic that is reminiscent of a night sky. Stroll here after dinner, and you can see stars sparkle by looking down as well as up. But on your first gaze in daylight, it's the view beyond the pool to the enticing seafont that captures you.













When you first arrive, they already know who you are. Scented towels and cool drinks replace whatever you may have grasped in your hand. Staff conduct check-in immediately in your pavilion. A large king bed swathed in white linens beckons, still, the lush outdoors await. The ocean breeze redolent of the florals blooming in the plantation's mature landscape. There's quite a bit of lounging done here, around your pavilion's sala, by the pools, on the daybed of your private pool if you have, or on the beach. The interiors are awash in gleaming, polished woods, a warm glow that catches and reflects the daylight streaming through all the geometric fretwork. There's a spacious dressing area outside the gleaming bath, and a deep soaking tub. Wish you didn't need to unpack? Accomplished right away. Feeling parched and peckish? There's room service and your villa comes with a gourmet kitchen, plus chef and housekeeper. Or venture outside, head back toward the main pavilions for any of the restaurants onsite. The resort's several dining options specialize in Japanese washoku, Thai, and Mediterranean cuisines. The diverse menus feature a variety of dishes, some indulgent, others geared toward specific tastes or diets. Every dish is an artful presentation. And every person on staff knows the best seats to enjoy the sunsets while dining.

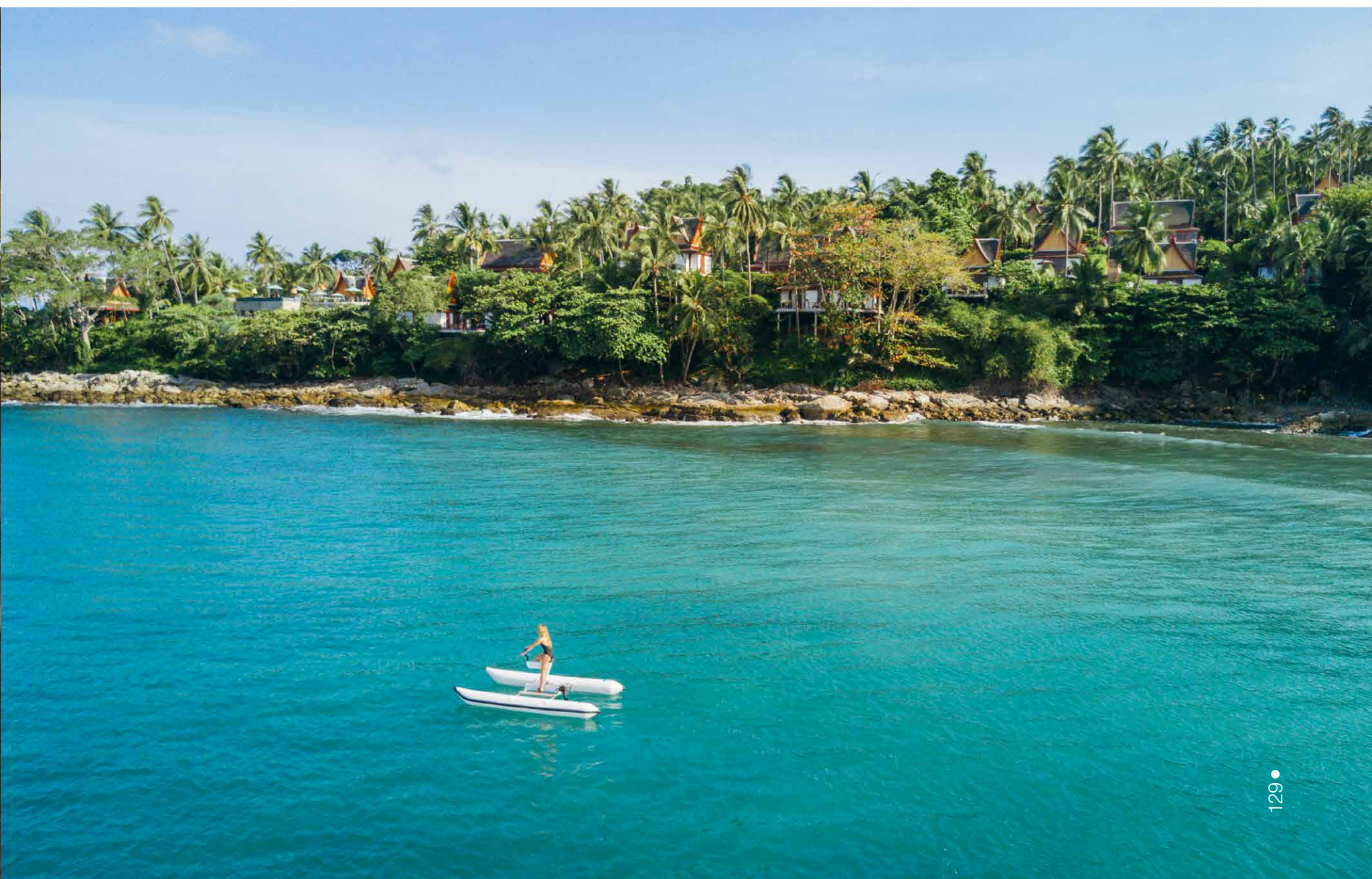
Like all Aman resorts, there's an indulgent spa here as well. Amanpuri is home to the brand's first -- and most comprehensive -- Holistic Wellness Centre. Featuring Wellness Immersions, journeys in themselves, ideal for stays of a minimum three nights or longer. Larger villas might have their own saunas, gyms, and massage tables, but self-care here at the Centre encompasses body, mind, and spirit. So yes, it is possible to detox, lose weight, tone muscles or skin at the Centre. But guests can also focus on improving physical performance and restoring health and vitality with care from integrative medical specialists skilled in Ayurveda, Traditional Chinese Medicine, and other modalities. Lifestyle coaches are

on hand as well. And the chefs create maximum sensory appeal with any prescribed juicing, specialty, or vegan regimens. For those who wish only to indulge, the spa offers the customary face and body treatments. There are outdoor group yoga and pilates classes daily. Locale-appropriate Thai massages, muay-thai, and kickboxing lessons are also on hand.

The Aman brand is famous for anticipating a guest's every need. At Amanpuri, this also applies to the younger set. Striding down the dramatic staircase to the soft white sands of Pansea Beach, you find two beach clubs, one for couples, the other for families. An extensive kids program includes Hot Spot, where the hard-to-please ages (12 years and up) will find a nurturing, supportive space to make films, mix music, practice skateboarding, refine sailing skills, and more. Rounding out the exhaustive roster of activities is an enviable array of equipment. Under watchful eyes, kids enjoy speeding across the surf on Seabobs or testing out Aman's first collection of Schiller water bikes. An interactive kingdom for ages 5 to 11 is open at Eco Beach Centre. Kids can discover the flora and fauna of Thailand in koi and turtle ponds, and aquariums and terrariums housing autochthonous species, including flutters of Thai butterflies. Fruit and vegetable gardens and an arbor of fruit trees reveal traditional local life, and kids can learn to cook and enjoy the region's cuisine. Learning Batik dying, traditional Thai dance, and the inimitable -- and always enviable -- Thai customs of fruit carving and flower weaving are yet another reason for yearning to be a child again.

After 33 years, 33 properties, and 20 countries, the brand continues to draw upon its first resort as its touchstone, while it continues to expand. Luxurious retreats reflective of their place and culture that cosset guests with over-the-top service and sublime experiences make a hefty legacy. Amanpuri remains an award-winning icon that both honors and refines that legacy. ⊕













Candice Swanepoel

by Jean Claude Dhien  
New York - Photography

+1 646 283 3175 | [www.jcdhien.com](http://www.jcdhien.com) | [jc@jcdhien.com](mailto:jc@jcdhien.com)



**Six Degrees Of Maximization:**  
ESSENTIALS TO  
GET YOU THROUGH  
REGATTA DAYS...  
AND A FEW NIGHTS

Photos: Gill Marine Media, HIGHMIND.SE, North Sails Media, Marie France L'Ecuyer, Zhik Media,  
Soren Wiegand, Kyle Meyr, Helly Hansen Media, Pablo Ferrero | Words: Janine Devine





We're in the midst of racing season here in Costa Smeralda, Italy's yachting playground named for its striking blue waters dappled with sparkling emerald. On any regatta, the wind and waves pelt your face and legs, salt crunching your hair and sticking to every pore. The scent of the sea mixes with adrenaline or, sometimes, frustration. Even with extreme weather conditions, you wouldn't have it any other way. It's those days with no wind at all you dread. That means you need to find something else to do besides sail.

Here's a lean, mean guide to what you and your trusty first mate need to carry you from long days on the sea into afternoons and informal evenings. Featured here are tried, tested, and true sailing wear, the best of the best performance brands: versatile, protective, comfortable. Some are likely already in your wardrobe. As the Scandinavians love to say, there's no bad weather, only bad clothing.

We're featuring Helly Hansen, whose long lineage began in the beautiful but harsh Norwegian fjords in the late 1800's. Since then their clothing lines have become internationally appreciated for skiing, sailing, and any outdoor lifestyle.

There's the Aussie brand, Zhik, which just brought home the gold in Japan, outfitting their home team, as well as teams from Singapore, New Zealand, and Denmark.

Gill Marine also makes our list; the British brand started in 1975 by a frustrated dinghy sailor in the back of his dad's factory. Today it's the leading marine-wear brand.

North Sails, our American entry, got its start in the 50's with an Olympic Gold medalist producing performance sails. Sailing apparel came in 2018 and carries with it a long tradition of sustainability.

Polos and shorts are, after all, polos, and shorts. Your own personal preferences will determine which works best for you. Besides fit and color, it's not possible to go wrong with any of these easy pieces.



## FOOTWEAR

Starting from feet up, Helly Hansen's fetching Fjord Canvas shoes V2 in charcoal will carry both genders from hotel check-in, trotting around La Piazzetta for window-shopping on a lay day, or the getaway back to Olbia and your awaiting jet.

Onboard your racing yacht, though, rely on Zhik's Fuze deck shoes. They've proven to be super quick-dry; a gap in the mid-sole channels water out and away. An anti-bac lining on the interior and proprietary gripping -- yet non-marking -- soles are true essentials.

Fjord Canvas shoes V2



Zhik's Fuze deck shoes



## ACCESSORIES

Whether the early morning buzz is that today's weather is utterly divine or significantly less than, pop on Gill Marine's Technical Marine Sunhat which provides the same 50 UV protection for faces as the brand's polos (below) more securely than a cap. That extra coverage to the oft-forgotten back of your neck will be appreciated after a long day.



Zhik Harbour Shorts



## PANTS & SHORTS

We love versatile and each of these entries fit that description. Although none will get you through to the Skipper's Dinner at Yacht Club Porto Cervo. Onboard, however, you'll appreciate Zhik Harbour Shorts because they are so all-purpose. The 4-way stretch woven and water-repellant shorts have reinforced seams, ample pockets, 8-inch inseams and will take you from the regatta to a seat at a café table. They come in sizes for men and women and perform equally well in the long version. Sailors -- and loungers -- are sure to love Gill Marine's UV Tech Trousers with 50 UV protection built right in for your legs. Styled for both men and women, we love that they come in khaki, a casual color perfect for the bar.

Gill Marine's UV Tech Trousers







North Sails Southern Ocean Smock

## JACKETS

It's easy to underestimate summer along the Med; like it or not, foul weather gear is a necessity for a regatta. You'll appreciate Helly Hansen's Pier 3.0 jacket, crafted from the brand's HELLY TECH® performance fabric, which provides the toughest weatherproof outer layer, designed for high resilience to the harshest conditions. You'll find it super light-weight, fully water- and wind-proof, and capable of withstanding piercing temperatures. All this, and it's very breathable, too; keeping you dry while allowing sweat vapor out.

You'll also excel with North Sails Southern Ocean Smock, which offers serious protection in all sizes. A GORE-TEX™ exterior and high neck protects against precipitation of any kind. This jacket skims mid-thigh and then drops in the back to keep you dry no matter which way you move. Does that sulphur-yellow shade look familiar? It should if you watched the Rolex Fastnet Race in August. Franck Cammas, Charles Caudrelier and crew aboard the Maxi Edmond de Rothschild were wearing these same jackets when they brought their Gitana trimaran to glorious victory, marking their second consecutive win and setting a new course record.



Helly Hansen's Pier 3.0 jacket







## SHIRTS

Early morning starts call for easy pieces. Pull on these UV tech polos by Gill Marine. They'll keep you polished, authoritative, calm. They're flexible, breathable, and come in a wide variety of colors and sizes for both gents and ladies.

You might prefer Zhik's 100% premium cotton polos. Sized for both genders, they're soft, non-clingy, and look great over anything.

We also love the less tech-y Fjord QD short sleeve by Helly Hansen. It's fresh, works well over white linen trousers, and beneath a navy linen blazer for more formal occasions, accessorized with a jaunty bow-tie and pocket square.

No collars? No problem. North Sails GP SS shirt is a silk-weight, fast-dry, breathable tee that drapes well over those PECS you've been developing.



Gill Marine



Fjord QD



Zhik



## JUMPERS & DRESSES

Gentlemen, you may divert your attention elsewhere, we've saved the best for last. You might call these sweaters, either way, call them essentials to carry you throughout the day, even as an accessory. Navy and white coordinate fabulously on the popular North Sails striped cotton jumper. Graduated stripes and bell sleeves make this a stunner over white or navy cigarette pants or slim skirts, even over swimwear.

Obviously not standard deck-ware, Helly Hansen's Thalia Pique Dress is a preppy classic. It's easy to toss on, packs well, and keeps you looking stylish on the hello as well as the goodbye.

These will be your must-have's until next season. Whether for your first -- or final -- regatta this year, these brands stand up to whatever challenges nature and the Tyrrhenian sea impose. When you hear the pronouncement "and the cup goes to..." you know it will always be you, your crew, and these exceptional pieces. ⊕









# NAVIS™

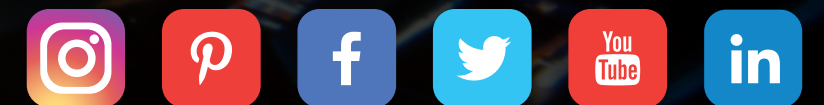
US Best Superyacht Design Magazine

Subscribe  
Today

Purchase Print and Digital Subscriptions:  
[www.navisyachts.com/store/](http://www.navisyachts.com/store/)

Call:  
+1 305 913 1337

Follow Us:



@navismagazine







*Park Hotel Kenmare*

A WARM  
WELCOME AWAITS



SHELBOURNE STREET, KENMARE, CO KERRY, IRELAND | TEL: +353 (0)64 664 1200  
INFO@PARKKENMARE.COM | WWW.PARKKENMARE.COM

