



NAVIS™

YACHT DESIGN & LIFESTYLE

Issue 72 | June/July '23

ADMIRAL 75m KENSHŌ

CRN 52m

CIAO

Perini Navi 45m

BEUSH

Regattas

PalmaVela 2023

Travel

A New Dawn At Splendido
A French Haven in the Heart of Manhattan

Luxury Lifestyle

Lamborghini Revuelto

Stories From The Ocean

Love, Life, Liberty & Luxury In Tahiti

www.navisyachts.com



桜の花
は
世
に
代
り
な
ら
ず



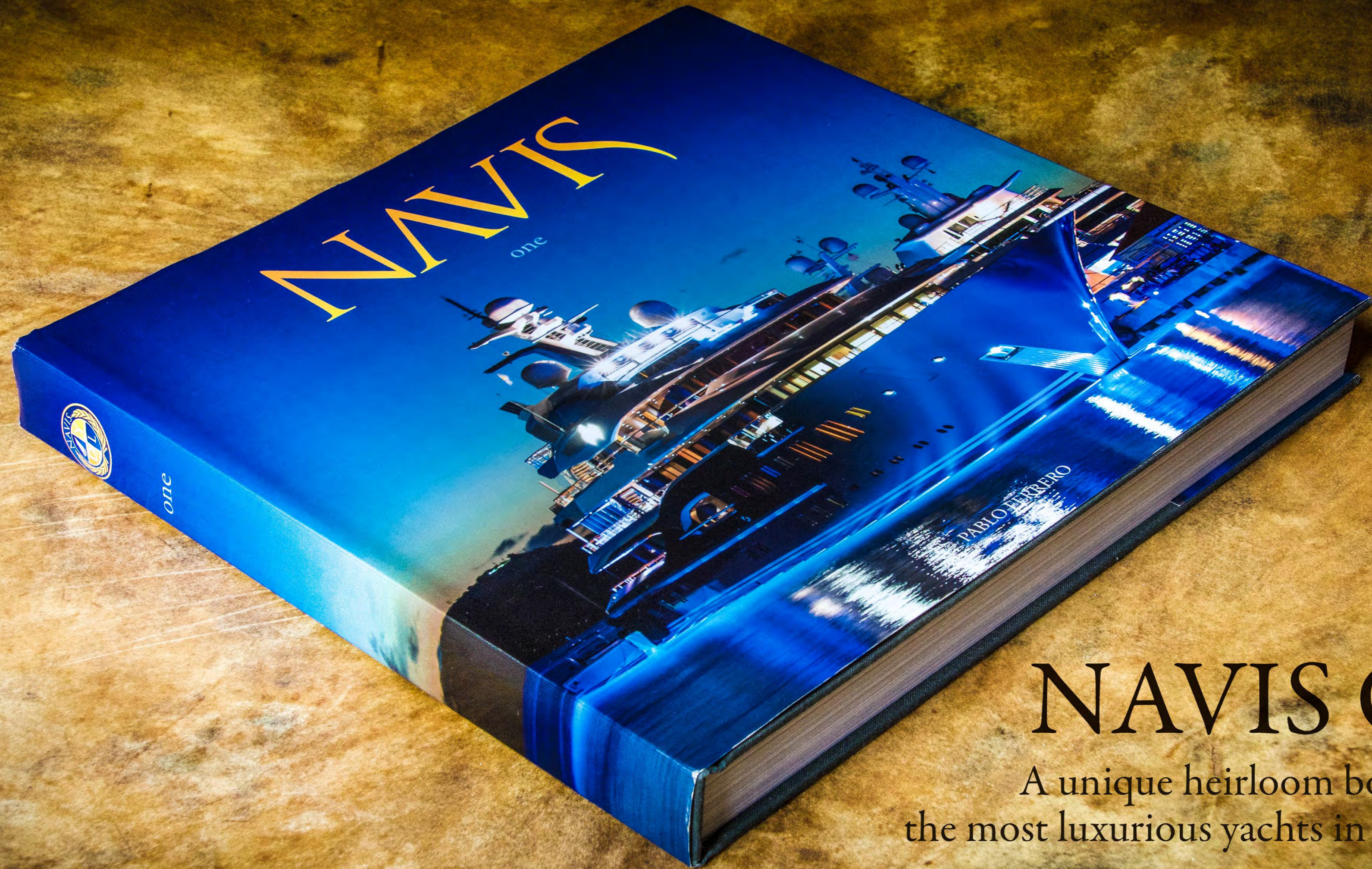
Take ownership of *Sakura* when the cherry blossoms bloom in the spring of 2025.

When designing *Sakura*, we were inspired by the power cherry blossoms have in bringing people together each year for celebrations and viewing parties. *Sakura* is thus a yacht of conviviality and togetherness, balancing gorgeous spaces for interaction, entertainment and family time with sophisticated rooms for individual reflection and retreat. Rarely in Feadship's history has there been such an opportunity to leapfrog the wait list by three years! www.feadship.nl/sakura

There are yachts and there are Feadships.

www.feadship.nl

FEADSHIP
ROYAL DUTCH SHIPYARDS



NAVIS One

A unique heirloom book about
the most luxurious yachts in the world

Order your copies: +1 786 406 6111 - enquiries@navisyachts.com - www.navisyachts.com/store



Love, Life, Liberty & Luxury In Tahiti



M/Y Kenshō



M/Y Blush



M/Y Ciao

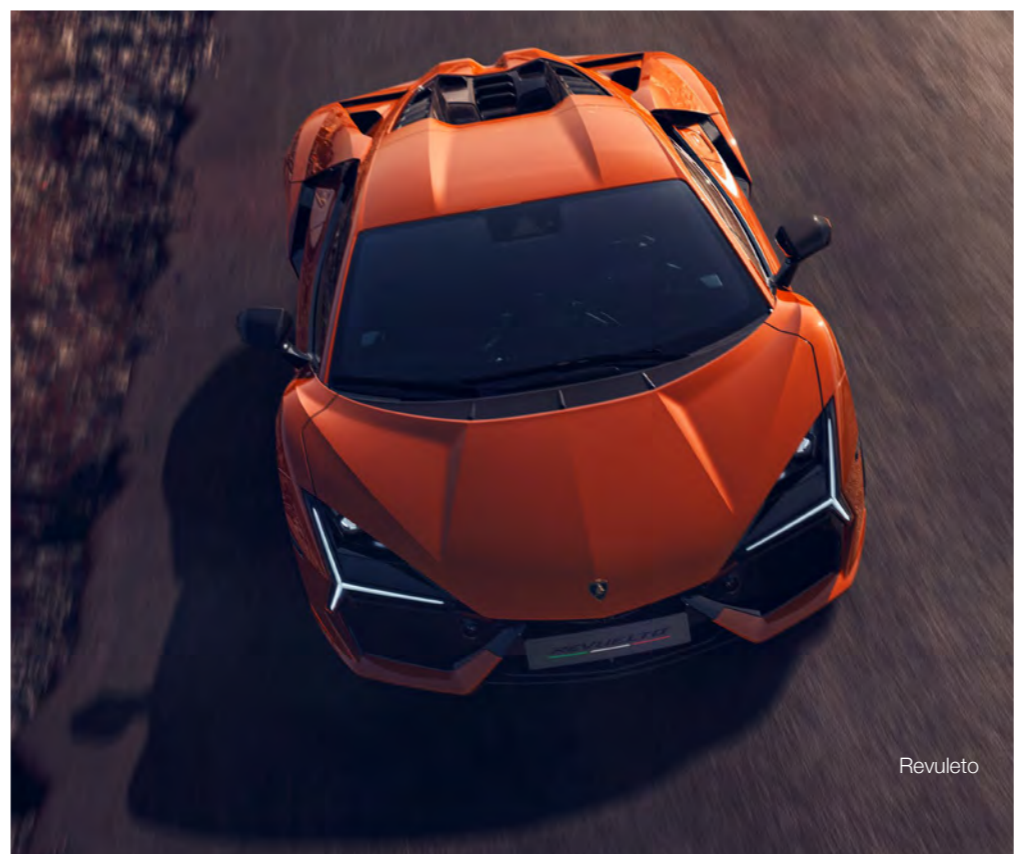


Palmavela 2023

Contents

News	12
A Year And A World Of Events With Lürssen: Love, Life, Liberty & Luxury In Tahiti	19
Admiral Yachts 75m Kenshō	31
Perini Navi 45m Blush	57
Crn 52m Ciao	77
Maxis To One Designs Palmavela 2023	99
Lamborghini Revuelto	113
A Belmond Hotel, Portofino A New Dawn At Splendido	129
A French Haven In The Heart Of Manhattan Benoit New York	139
Yachting Apparel For The Summer Season Setting Sail In Style	144

*For queries or information requests about the yachts in this issue contact: enquiries@navisyachts.com



Revuelto



Benoit New York



A New Dawn At Splendido



Setting Sail In Style

STAFF

Year 12 - Number 72
June - July 2023

Editor-in-Chief, Director:
Pablo Ferrero

Editorial Assistant:
Maria Donadio

Contributors:
KL Turner, Emma Hersh, Janine Devine,
Jorge Arcuri, Matias Ferrero

Design: Gabriel Parra

Cover Image: M/Y Kenshō, Giuliano Sargentini
Photography:

Klaus Jordan, Bernard Beaussier, Grégoire le Bacon, Hino Itaru,
Giuliano Sargentini, Christopher Scholey, Billi Black, Carlo Borlenghi,
CRN Yachts, Maria Muina, Laura G Guerra, Mediacart, Lamborghini
Media, Tyson Sadio, Alain Ducasse Media, Gill Marine Media, Beau
Outteridge, Zhic Media, High Mind Studios, Helly Hansen Media,
Amory Ross / 11th Hour Racing, Musto Media

Advertising: advertising@navisyachts.com
Letters/Comments: contact@navisyachts.com
General Enquiries: info@navisyachts.com
Subscription Enquiries: contact@navisyachts.com
<http://store.navisyachts.com>

Website: www.navisyachts.com

NAVIS Yachts is published by **Flat World Communication LLC**.
Copyright Flat World Communication LLC. ISSN 2160-7966. All rights
reserved. Reproduction in whole or in part without prior written permission
from the publisher is strictly prohibited. Great care has been taken
throughout the magazine to be accurate, but the publisher cannot accept
any responsibility for any errors or omissions which might occur. Although
every care is taken with manuscripts and photographs submitted.

NAVIS ISSN 2160-7958 (Print)
NAVIS ISSN 2160-7966 (Online)
NAVIS Yachts is a bimonthly publication:
Flat World Communication LLC
201 S. Biscayne Blvd., 28th Fl, Miami, Florida, 33131
t. +1 (305) 913 1337



NAVIS

YACHT DESIGN & LIFESTYLE

Y A C H T S A L E S D I V I S I O N

We help you fulfill your dream

t: +1 305 913 1337 / e: enquiries@navisyachts.com





A United Front for Ocean Conservation

WORLD OCEANS DAY 2023

Photos: Pablo Ferrero | Words: Pablo Ferrero.

As we mark World Oceans Day this June 8th, our thoughts turn to the saline depths that hold the heart of our planet, teeming with a multitude of species, each playing a crucial role in our marine ecosystems. The oceans are more than just a vast expanse of blue; they are the lungs of our Earth, a source of sustenance, and a cradle for biodiversity. Yet, they are under severe threat, with overfishing threatening the balance of these fragile ecosystems. The devastation is real, and the time to act is now.

NAVIS Magazine is privileged to have the opportunity to shine a light on the crucial issues that our oceans face. We are dedicated to raising awareness, educating our readers, and advocating for sustainable practices that will help preserve our oceans for generations to come. However, we cannot do this alone.

We wish to express our profound gratitude to all our friends and partners who stand shoulder-to-shoulder with us on this important mission. From the Yacht Club de Monaco to Lürssen, Feadship, Camper & Nicholsons, luxury car manufacturers like Lamborghini and Rolls-Royce, environmental innovators like The Baltazhar Project, and leading marine apparel manufacturers like Helly Hansen, Gill Marine, Zhik, and MUSTO – each one of you plays a significant role in amplifying our message and bolstering our commitment to ocean conservation. However, our network of support extends beyond these names, encompassing countless other collaborators who, while space does not permit us to mention each of you individually, are no less valued or appreciated. Your collective partnership, enthusiasm, and shared vision truly make a difference. Each contribution, big or small, pushes us closer to our goal of a healthier and more sustainable ocean.

These companies are not just about luxury yachts, high-end cars, or top-quality clothing; they are about a shared commitment to environmental stewardship, a dedication to sustainability, and a passion for our oceans. Their support, coupled with our shared mission, proves that when we unite, we can drive change.

Fishing companies have a significant role to play in this narrative. They are at the forefront of the oceans' health and hold a great responsibility. It's no secret that overfishing is one of the major threats to our oceans today. The drive for short-term profit often blinds the industry to the long-term effects of their actions - depleting fish stocks, destroying habitats, and threatening marine biodiversity.

On this World Oceans Day, we call for a global shift towards responsible fishing practices. It is high time to introduce stricter fishing regulations worldwide, backed by science, to ensure sustainable harvesting and protect our saline biodiversity.

Everyone has a part to play in this endeavor. As consumers, we can choose to support companies that practice sustainable fishing. As citizens, we can advocate for stronger regulations. As a global community, we can raise awareness and educate others about the importance of our oceans.

We are at a crucial juncture in our relationship with our oceans. The decisions we make now will determine the future of our marine ecosystems. Let us choose a path that leads to sustainability, diversity, and resilience.

This World Oceans Day, let us remember that every action counts, every voice matters, and every step forward brings us closer to a healthier ocean. Let us stand together for our oceans, for they are the lifeblood of our planet. And, in doing so, let us show the world that when we unite for a common cause, we can achieve the extraordinary.

Here's to the power of unity, to the beauty of our oceans, and to the promise of a sustainable future. Happy World Oceans Day.

In unity,
Pablo Ferrero
Editor-In-Chief, NAVIS Magazine



Baglietto Towards Sustainable Luxury: Premiere of Hybrid T52

A paradigm shift in the maritime industry was unveiled amidst the pristine waters of Portofino. Baglietto, the revered Italian yacht builder, has heralded a new era in sustainable luxury with the global premiere of their first hybrid-propulsion 52m yacht, the T52.

Artistically crafted by Francesco Paszkowski Design, the T52 yacht marries luxury with sustainability, an endeavor that resonates with Baglietto's vision for the future of yachting. The grand reveal took place against the picturesque backdrop of the delightful bay of Portofino, a setting that beautifully complemented this beacon of cutting-edge design and technology.

Baglietto's CCO, Fabio Ermetto, expressed the company's elation at this milestone event. "This is a much-awaited moment for us. Being the first model in the T52 line to mount a hybrid propulsion, hull No. 10238 signifies a crucial step in our shipyard's journey towards sustainable yachting, a path we have been pursuing with unwavering determination," he commented.

The marina of Portofino was more than just a launchpad for the T52. It also hosted the unveiling of OFFICINA BAGLIETTO, a unique training project by YAC aimed at nurturing young talent. The project endeavors to educate about the luxury market, including but not limited to nautical design, product design, fashion design, and jewelry design.

Baglietto's CEO, Diego Michele Deprati, sees this project as embodying the company's commitment to the new generation. "OFFICINA BAGLIETTO reflects our shipyard's ever-growing commitment to not only building world-class yachts but also to developing highly valuable projects that focus on and consider the new generations," he said.

The event was a confluence of luxury and sustainability, with various partners such as Antinori, Bentley Milano, Elevanty, FPArt, Frette, Il Bisonte, Leone Limentani, Miller Harris, and Taurus. They amplified the value of the yacht, contributing to a unique and exclusive world premiere.

As the world of luxury evolves, so do we at NAVIS Magazine, bringing you the most exclusive insights into the industry. The T52 and OFFICINA BAGLIETTO are just glimpses into the captivating world of yachting that awaits our readers.

With an annual subscription to the NAVIS digital edition, you'll have unparalleled access to our immersive content - from in-depth features and exclusive interviews to breathtaking imagery from the world of luxury yachting. Join the NAVIS community and embrace the journey of luxury and sustainability, mirroring the leap of visionaries like Baglietto. ☎

Unveil the Stunning Admiral S-Force Silver Star Superyacht

In a landmark partnership, The Italian Sea Group and fashion designer Giorgio Armani have unveiled the Admiral 55-meter superyacht S-Force Silver Star, a remarkable fusion of elegance, sophisticated design, and cutting-edge technology. Sold initially in 2021, the luxury yacht's completion was facilitated by broker Jean-Claude Carme of TWW Yachts, with Giorgio Armani and his team crafting the Armani/Casa interiors alongside the Admiral Style Center.

Giovanni Costantino, CEO of The Italian Sea Group, expressed pride in this collaboration, emphasizing the shared commitment to "Made in Italy" excellence and meticulous attention to detail. Comprising steel and aluminum, the yacht's exterior design reflects the high-quality standards of Admiral yachts, featuring a unique beach club area and an innovative staircase for sea access.

The three-deck S-Force Silver Star hosts six cabins, including a master and VIP suite, and accommodations for 11 crew members. A custom Jacuzzi on the sun deck heightens the luxury experience. The Armani/Casa interiors exemplify sophistication with minimalist design, high-quality fabrics, marbles, handcrafted finishes, and a delicate palette of ivory and light blue.

The superyacht has also earned Green Plus certification by RINA, marking The Italian Sea Group's commitment to environmental sustainability. The Italian Sea Group, a leading Italian producer of superyachts, operates globally in constructing and refitting motor and sailing yachts.

Armani/Casa, established in 2000, is a worldwide leader in luxury furniture and furnishings, providing interior design services to private clients and real estate firms, with operations in 29 countries and 40 points of sale.

This collaboration signifies a milestone in luxury yachting, with the Admiral S-Force Silver Star promising to redefine expectations of yacht owners and enthusiasts. The yacht's interior features luxury materials such as ivory onyx, bluetto rosewood marble, and Venetian printed silk. Tamo wood, or cool-toned Japanese maple, adds elegant contrast, contributing to a luxurious, light atmosphere indicative of the Armani/Casa style. The yacht design emphasizes seamless integration of interior and exterior spaces. A fully sliding glass door connects the upper deck's interior and exterior areas, while the "touch and go" area overlooks the hull silhouette.

The Italian Sea Group's environmental commitment is underlined by its focus on sustainable practices, highlighted by the Green Plus certification. The partnership with Giorgio Armani represents one of the company's strategic collaborations, which previously included a partnership with Automobili Lamborghini. As the leading Italian producer of superyachts, The Italian Sea Group continues to influence the luxury yacht market. The launch of the Admiral S-Force Silver Star encapsulates their prowess in merging exquisite design, superior craftsmanship, and advanced technology, creating unparalleled experiences for yacht owners and enthusiasts. ☎





Project 710 Feadship's Leap Towards Zero-Emission Superyacht

Feadship, the Dutch superyacht builder, has just revealed the first glimpse of their groundbreaking Project 710. This 84-meter-long masterpiece combines advanced technology, bold design, and environmental sustainability, marking a significant step in Feadship's ambitious goal to build zero-emission superyachts by 2030.

The yard in Aalsmeer witnessed the magnificent yacht slipping out of her construction hall, where her low profile, horizontal styling features, and clean shapes create a stunning visual presence. Designed to challenge traditional yacht norms, Project 710 features an innovative layout, showcasing the collaboration between British design firm W.D. and MONK design.

Project 710 offers surprising destination spaces, including an asymmetrical atrium staircase leading to a lower deck dining saloon, a bow observation lounge, and an Aqua Lounge with underwater windows. Terraced aft decks without pillars and glass balustrades ensure unobstructed views, connecting guests to the natural environment.

A game-changer in superyacht engineering, Project 710 is the first of its kind to focus on carbon reduction through hull optimization at cruising speed, weight control, and advancements in electric propulsion. The yacht is equipped to run on HVO, a second-generation biodiesel, which reduces CO2 emissions by approximately 90% during sea trials and delivery.

Feadship's Advanced Electrical Drive (FAED) program powers Project 710, providing 4.5 times more electrical storage capacity than its first hybrid yacht, Savannah. The yacht features electric Veth contra-rotating thrusters for drive and steering, replacing traditional drive shafts and rudders, maximizing efficiency and minimizing vibration. The engineering team has also focused on waste heat recovery, repurposing heat from the custom variable-speed generators, and air conditioner chiller for various applications, including pool water heating and engine preheating. An innovative heat pump system even allows the yacht to draw heat from seawater. Project 710 is an extraordinary milestone in the superyacht industry, setting new standards in design, engineering, and sustainability. ⊕

Benetti's Revolutionary Custom 67-Meter Yacht

Benetti has recently launched a custom 67-meter yacht called FB285NK, which showcases their dedication to innovation and design. This unique vessel is the result of a collaboration between Benetti, Cassetta Yacht Designers, and the owners themselves. The yacht's co-owner, an experienced interior designer, played a significant role in defining its personality, while Cassetta created the exterior blueprint. The FB285NK is a perfect blend of form and function, with its custom-built design reflecting the owner's discerning taste in style, timber selection, and intelligent space layout.

The yacht was designed to offer a refined beach house experience on the water, prioritizing tranquility, comfort, and relaxation. To ensure quality service, the owners decided to limit the yacht to five cabins, which is rare for a vessel of this size. Upon entering the Main Deck lounge, guests will be awed by the yacht's grandeur, with expansive ten-meter wide hull sides and large windows creating a sense of openness and fluidity. The FB285NK's signature circular side windows, each almost 2 meters in diameter, add to the design's elegance and ensure a flood of natural light into the yacht's interiors.

Sustainability was also a top priority in the FB285NK design, with FSC®-certified teak used throughout the decks, doors, pillars, and furniture. This certification guarantees that the teak used in the yacht's construction comes from responsibly managed forests, highlighting Benetti's commitment to environmentally sustainable practices.

The FB285NK sets a new standard for bespoke designs and sustainable practices in the yachting world. NAVIS Magazine's digital edition covers this story and other similar ones. ⊕





Introducing NORN: A Pioneering 90m Superyacht by Lürssen

German shipbuilding titan, Lürssen, has once again pushed the boundaries of yacht design and engineering with its latest delivery, NORN. This remarkable 90-meter superyacht embarked on her maiden voyage on April 29, 2023, after a successful construction period under the watchful eye of Cornelsen & Partner as the Project Manager.

NORN, previously known as Project 1601, was commissioned by a seasoned owning couple who had enjoyed the luxury and performance of their 70-meter Lürssen yacht for over two decades. With their desire for unparalleled design, engineering, and comfort for their family, they turned to renowned yacht designer Espen Oeino for the exterior. Oeino delivered a masterpiece that features flat surfaces, straight lines, and angular corners, exuding a sense of geometrical precision that is evident in every aspect of the yacht.

The vessel's interior, designed by Dölker + Voges, complements the crispness of the exterior styling, reflecting the same design theme throughout. In line with the Lürssen tradition, NORN is outfitted with state-of-the-art technology and engineering systems. Among the standout features are zero-speed stabilizers, an outdoor cinema, and a liftable pool floor with dance floor illumination.

In addition, NORN is equipped with a dynamic positioning system that allows for electronic anchoring in sensitive and remote locations. This innovative feature safeguards the seabed while providing secure mooring, regardless of water depth. As we witness the launch of this groundbreaking superyacht, we are reminded of the ever-evolving landscape of luxury yachting. NAVIS Magazine continues to be at the forefront of reporting the latest innovations and trends in the yachting world. ⊕



Luxury and Eco-Friendliness with Rossinavi's Yacht No Stress

Rossinavi, the acclaimed Italian yacht manufacturer, has launched an innovative new yacht, the No Stress. This 50-meter vessel showcases an elegant design, groundbreaking hybrid technology, and artificial intelligence.

The No Stress was designed by Enrico Gobbi's Venice-based Team for Design. The yacht's aesthetic merges the sleek, sporty lines of automobile design with the sophistication expected from a luxury yacht. The interior is minimal yet intricate, with floor-to-ceiling windows providing panoramic sea views. The interior and exterior spaces flow together, creating an immersive experience.

No Stress introduces sustainable luxury yachting. It is Rossinavi's first hybrid yacht, integrating two MTU 16V 2000 M96L diesel engines with two electric motors powered by generators and a battery pack. This innovation signifies a significant step in eco-friendly cruising.

The vessel employs artificial intelligence (AI) that manages and monitors consumption when in electric mode, ensuring optimal performance while maintaining environmental friendliness. The yacht offers five different operating modes, enabling seamless adaptation to any situation.

No Stress is Rossinavi's inaugural BluE project, a venture focusing on developing efficient, environmentally friendly luxury

vessels. Federico Rossi, Rossinavi's COO, praised the launch of this hybrid yacht, emphasizing its high-performance capabilities. Rossinavi is committed to advancing this technology, planning to reveal its full potential in the forthcoming Sea Cat yacht. This dedication to sustainable luxury yachting anticipates a promising future for the industry.

Commissioned by a private client, No Stress creates an immersive and luxurious experience, with its spacious interiors and outdoor areas merging seamlessly. It epitomizes sustainable, cutting-edge design and technology in the yachting industry. Its sleek exterior, roomy interiors, and revolutionary hybrid propulsion system offer an unmatched yachting experience.

Rossinavi's dedication to merging luxury and eco-friendliness sets new industry standards. With the imminent Sea Cat and the continuous optimization of BluE technology, we anticipate further innovation from this esteemed yacht manufacturer. No Stress is not just a luxury yacht; it's a symbol of the future of sustainable luxury yachting, presenting a world where elegance, performance, and eco-consciousness coexist perfectly.

Embrace the No Stress lifestyle, and experience the best of luxury yachting while preserving the beautiful world around us. Sail into the future with No Stress, embodying the essence of joyful, sustainable luxury. ⊕

A Year And A World Of Events With Lürssen: LOVE, LIFE, LIBERTY & LUXURY IN TAHITI

Photos: Klaus Jordan, Bernard Beaussier, Grégoire le Bacon, Hino Itaru | Words: Janine Devine



For generations, the Lürssen family has created a legacy of constructing the world's finest and most iconic superyachts. These vessels, aptly crafted for the elite who expect nothing less than the very best, frequently break records and provide their owners with unparalleled experiences. Be it exploring distant and enchanting destinations or hosting extravagant parties, a Lürssen superyacht elevates the luxury lifestyle. This chapter takes a romantic dive into French Polynesia's Society Islands, a tropical paradise, and Lürssen's emblematic creations.

Reflecting on the year 2013, the M/Y Quattroelle took center stage, fascinating and enthralling many. Measuring a staggering 86 m (283 ft), this superyacht became a vibrant hub for the grand soirees that punctuate this eagerly anticipated event. An embodiment of refined nautical luxury, Quattroelle is a vessel that, once seen, remains etched in memory.

The Society Islands, the economic heart of French Polynesia, comprise fifteen islands, each with a moniker straight out of a fairy tale: Taha'a, Bora Bora, Mo'orea, Teti'aroa, Tahiti. These enchanting islands invite one into a dreamlike realm, and Quattroelle is the perfect vessel for such a voyage. This superyacht delivers an intimate connection to the dazzling marine sanctuaries that the island's luxurious resorts can only aspire to. The on-deck spa pool, with its infinity glass wall offering unobscured sea views, enhances this intimate connection.

Quattroelle's thoughtful design allows for extended voyages with fewer port stops, a perfect fit for the long-distance journey to these islands. Her twin CAT diesel engines, Greta and Juliette, produce 2,000 KW at 1,600 RPM, enabling a top speed of 17 knots and a range of 5,000 nm. Further, Lürssen enhanced this impressive power with integrated Rolls Royce steering gears and two high-lift rudders. For explorers who followed the 2023 Tahiti Pearl Regatta route, the sights and experiences around Taha'a and Ra'iatea will be especially thrilling.

Ra'iatea, the Sacred Island, may not be as well-known, but its stunning sunsets, lush jungle, and rich history make it a must-visit. Today, the island has become an attractive spot for offshore sailors, boasting marinas with robust infrastructure. Its neighbor, Taha'a, with its vanilla farms and black pearls, promises a different kind of charm, with serene white beaches and a vibrant underwater world that will delight snorkelers.

Anchoring near these precious ecosystems can be detrimental, but Quattroelle has a solution: a dynamic positioning system. This technology allows her to maintain a set position using a GPS satellite antenna in harmony with her engines, drives, switches, and stabilizers without dropping anchor.

Beyond its technological marvels, Lürssen has pioneered the integration of cutting-edge eco-friendly technology into its superyachts.







The company's passion for yachting has fueled its commitment to protecting the oceanic environment, partnering with global advocates since the late 1990s to reduce yachting's environmental impact.

Quattroelle is as much a celebration of natural beauty and cutting-edge technology as it is of luxury. This superyacht, marking Lürssen's first collaboration with the Italian firm Nuvolar Lenard, showcases a harmonious blend of precious woods, minerals, and metals, drawing inspiration from the four L's that represented the original owner's lifestyle ideals: Love, Life, Liberty, and Luxury. This motif is subtly incorporated throughout the superyacht, etched into the bow, exhaust stack, main lobby floor, and custom furniture.

The final product is a spectacle akin to The Society Islands themselves: a sleek and sophisticated exterior, generous open spaces accommodating a range of social engagements, and playful half-moon portlights accenting the main-deck level. Within, an elegant blend of Art Deco and Art Nouveau elements captures the islands' untamed beauty. The creative use of wood, ironwork, and handcrafted glass art, all depicting nature's exceptional beauty, draws a tangible connection with the surrounding paradise. Whether it's floral patterns, bird motifs, or aquatic life featured on doors, faucets, or dividing living spaces, Quattroelle is an immersive journey through nature's wonder.

Unparalleled beauty, an authentic journey that indulges body, mind, and soul, captivating every sense in a way that's impossible to forget. This is the essence of both the destination, with its cloud-wrapped rock spires, heart-shaped motus, vibrant wildlife, and Quattroelle. Anchored, with the soothing sound of the winds rustling and gentle lapping of the stunningly blue waters against her hull, tranquility is assured.

In the grandeur of Quattroelle, Lürssen's dedication to crafting the pinnacle of superyacht luxury, coupled with a deep-rooted commitment to environmental responsibility, shines through. Reveling in the serenity aboard this extraordinary vessel one thing is clear: the legacy of the Lürssen family, their craft, and their respect for the ocean they navigate, stands as a testament to their profound understanding of luxury and sustainability, coexisting in harmony. ⊕





Your Dream Yacht
Our Expert Guidance

NAVIS Superyacht Consulting

NAVIS



Take the first step towards your perfect yacht experience.
Get in touch with us at +1 (786) 406-6111 or email info@navisyachts.com
Let us help you create your ultimate yachting adventures.



Admiral Yachts 75m

KENSHŌ

Photos: Giuliano Sargentini, Christopher Scholey | Words: KL Turner





The Kinetics of Calm

Relaxation, in physical science, defines as the return of a perturbed system to equilibrium. That means all forces acting upon that system are in balance. Many things can upset that balance, initiating entropy and sending the system declining into disorder. For equilibrium to return, change must occur. Think temperature, pressure, density.

Loosely interpreted, the same principles can be applied to time on board Admiral Yachts' Kenshō. Man spends time in today's high pressure environment and his system goes out of sync. Man packs a bag and boards Kenshō for a cruise around the Med. Boom. Entropy reversed. Equilibrium restored. Relaxation initiated.

While that scenario is probably true for many superyachts, it is particularly so for this Zen-inspired, intuitive, 74-meter yacht from Admiral. Kenshō translates from Japanese as being at one with nature, or seeing one's true nature, which is what the yacht invites all to discover while cruising with the heart and soul of this enlightened adventurer.

A Thoughtful Owner

In the winter of 2016, Kenshō's owner put twelve lines to paper, giving birth to the vision of his first yacht design. Having already owned a 60-meter vessel and unable to find another yacht that suited his needs, he sought an unconventional build that reimagined the joy of living at sea.

Questioning the logic of traditional yacht layouts, he had a different plan in mind. No compromise. Form following function. Something personal. Groundbreaking. Better, with a plan for a higher quality of life at sea. Calm, luxurious, and artistic.

Thoroughly researching his options, the owner united a brilliant team of naval architects, yacht designers, and one yacht builder ready to take the project into new frontiers. Choosing AZURE Yacht Design and architects.berlin to sculpt exterior lines, Studio Jouin Manku to create interior designs, and Admiral Yachts for the build, they set the bar high, putting desire and imagination to work.

It would be Jouin Manku's first opportunity to translate their creative residential design language to that of a seafaring pied à terre, while Admiral's considerable experience counts 148 yachts in its portfolio since the firm was launched in 1966. All members of this elite conception du corps shared passion, creative energy, and a desire to work with this engaged, creative owner to deliver his intent.

On November 18 of 2021, Admiral revealed a most disruptive rule-breaker, leaving the audience breathless and the owner well pleased. Enter Kenshō.



Kenshō by the Numbers

Kenshō slips her 74.85-meter reverse bow form through the water with a 12.8-meter beam and a 3.3-meter draft. Powered by two electric Azimuth thrusters, the yacht cruises at 13.6 knots for a range 4,350 nautical miles, achieving speeds up to 15.4 knots when requested.

Kenshō carries a 220 kW electric bow thruster. The diesel electric pod system with permanent magnet electric motors scores high for efficiency with great power and limited volume. On board are five variable speed generators fitted with an antiparticle system for optimized consumption at all speeds, plus reduced emissions. Additionally, the hull form is designed to reduce resistance by employing azimuthal propulsion and retractable stabilizer fins

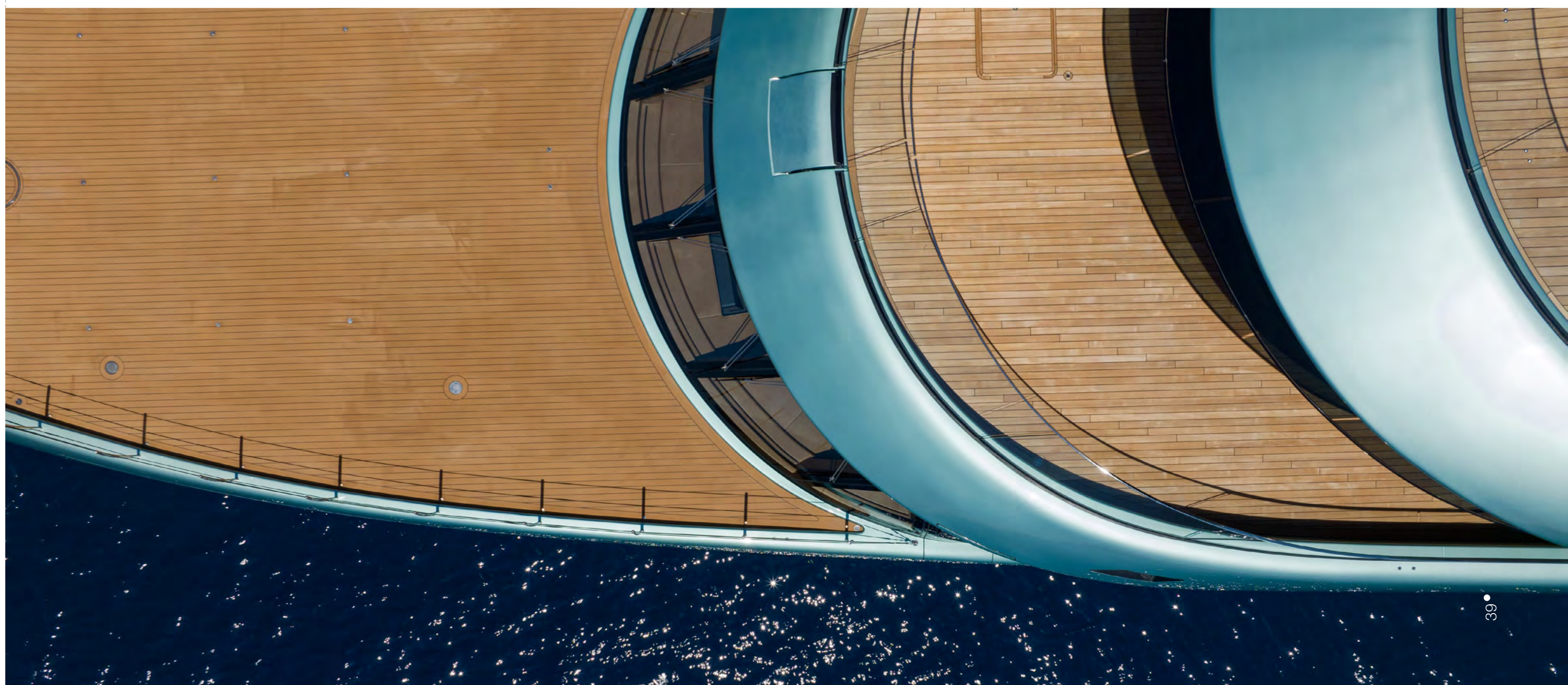
Accommodations for 12 guests in six cabins served by 23 crew, Kenshō features 2.7-meter ceilings, a 22-square-meter lower deck pool, a 13-meter-deep full beam owner's suite, and 7-meter-deep guest cabins. A luminescent elevator serves all decks, accompanied by an adjacent stairwell.

The Philosophy of Kenshō

Inspired by Asian myth and built with contemporary craftsmanship, Kenshō owns a unique philosophy that is quietly embraced throughout the yacht. Noble materials are used to fashion rounded organic shapes that are aesthetically soothing and inherently comfortable. Natural materials like teak, marble, silk, wool, bronze, and glass dovetail functionality with form, enhancing luxury and improving upon the beauty, joy, and deep contentment of time spent at sea.

Harmonious palettes paint intuitive yachtscapes in large, sweeping strokes of space and light, finding more intricate details in hardware, finishes, fixtures, and art. Nature's neutral hues wash over the fresh rooms with industry leading 2.7-meter ceilings in rich textures with functional and fine art adding poetic rhythm. Open spaces transform to intimate nooks and back again, with tables and sofas that slide into place, responding to need.

There is no FOMO over sea views aboard Kenshō. Instead, a continuous presence honoring the tranquil ocean flow is evident from fore to aft. The ultimate perch in the upper deck gallery displays sight lines through both ends of the yacht, issuing images of vast horizons. The view aft over the deck establishing the most recent route, combined with the view forward over the bow indicating what's ahead, makes for excellent conversation or meditation, whichever suits.







The Main Deck

Space is abundant, making this vast layout luxurious and indulgent, although without pretention. The full beam master and dining space seem impossibly big, yet perfectly proportioned in view of the atmosphere of the yacht. The designers have truly worked magic here. High ceilings, large windows, and a light, natural palette contribute to the fresh, open feel.

Aft on this deck, as with all the others, a beautiful, organically shaped Jouin Manka curved sofa welcomes casual gatherings, dipping its back along the aft wall to preserve views. An oval bar sits forward to serve guests seated there, or at the tabled sofa to port. A smoothly carved floating stair accesses the upper deck to starboard.

Through large glass doors, the full beam dining room connects to the alfresco deck. Two beautiful rectangular tables trimmed in light wood on gleaming silver mono bases are placed athwartships. Floor to ceiling glass display cases line the walls, intent on showing off items collected along Kenshō's journeys.

Overhead, a gathering of clear glass curves is suspended in a compactly designed but expansive chandelier, discretely lit as it stretches the full length of the tables. When not in use as a dining area, the tables sit separately, with white leather armchairs on silver bases, for use as a study, a reading room, or a casual meeting space. When hosting dinner for 12, the table tops slide along the bases to join at the center, becoming a single, extended dining table.

Double wooden doors with custom hardware open to the hallway leading to two guest cabins echoing those on the lower deck, but with even larger windows. Further down the hall, the elevator and stairway transport guests to other decks.

Fully forward, the master suite is four interconnecting spaces that can be divided according to need. In the aft portion of the suite, the living room to starboard and den to port both have gorgeous, rounded and curved Jouin Manka sofas and chairs in creamy white, with loose pillows and accompanying tables.

Silk carpets over teak floors, with silk walls and ceilings, add texture and warmth. Steaven Richard metal door panels bearing textured brass handles earn a lovely patina as functional art. These doors, like additional Richard work in the private workspace to port, authenticate the space as a thoughtful, creative, relaxing retreat.

The bedroom, accessed through the sliding panel doors, can either be open to the living room, or closed for privacy. Silk carpet and teak flooring serve as the base for the bed with custom woven silk headboard.

Double doors lead to the port side bath with separate shower and toilet enclosures. The star of the show is the soaking tub. Carved from a single piece of Carrara marble, teak flooring strips radiate outward from the center of the room. A pair of marble sinks atop wood cabinetry and seated wood vanity with fold down mirror tastefully provide every necessity.







Wow Factors

In the extraordinary design of *Kenshō*, incredible vistas, typically exclusive to the forward upper deck space and reserved for the wheelhouse, are graciously allotted to the guests. This unique feature invites the passengers to delve into and perceive the authentic spirit of yachting. The novel architecture, which involves lowering the split-level wheelhouse, allows the placement of this magnificent guest space in a prominent forward position. This not only provides an unrivaled panoramic view but also immerses the guests in the voyage.

Moving the large, exterior pool from the main deck to the lower deck puts guests at eye level with the sea, inviting an incomparable welcome aboard moment as well as valuable family pool time. Placing *Kenshō*'s pool on the lower deck also frees space for larger guest areas on the main deck.

The relocation of the engine room from amidships on the lower deck to the tank deck enhanced the vessel's balance and opened up an expanse of prime lower deck real estate. This space has been repurposed for guest quarters, transforming the vessel's interior layout. The repurposing has created a more efficient use of space, offering a new level of convenience a luxury for the guests. Once a spatial concern, the tenders have been dispatched to forward hull door garages. This strategic move has streamlined operations, making it easier for guests to embark on water activities. Just a few steps away from their quarters, guests can enjoy direct access to the pool area—an inviting oasis of relaxation and fun.

The Lower Deck

Smoothly curved shapes fixed with glass walls fore and aft, *Kenshō*'s 22-square-meter pool with tile mosaic bottom puts a new perspective on the lower deck. Nearly at eye-level, the sea looms large through the aft glass wall, while smoothly sculpted sofas, chairs, and tables accommodate snacks and drinks. Transfers via the ultra-stylish *Kenshō* limousine tender with retractable roof make boarding simple and safe for water sports or shore visits.

Further forward, through a sculpted leather hallway from British artist Helen Amy Murray, guest quarters are accessed through concave, wooden-lined vestibules. Custom bronze door hardware cast in coral-inspired shapes, set into small metal shields, illustrates that the details are exquisite.

Cabins can be reconfigured to separate the bath from the sleeping area, or to switch from twin beds to a large double. Doors to the shower and toilet enclosures are glass-encased fabric. Silk lined walls and silk carpets lend a soft touch to the warm teak of the floors and ceilings. Large windows offer generous natural lighting in addition to overhead LED and tray ceiling illumination.

Forward of the guest cabins, a sculpted wooden stairway is lined with shell-embossed leather panels. The sheer, fabric-lined glass elevator transforms into a gracious lantern as it shuttles guests between decks. A set of sculpted stairs also access the main deck from the pool area.







The Upper Deck

Unprecedented views from the middle of the upper deck look straight to the horizon, both fore and aft. Those clean sightlines took some planning, but the result proves every second worthwhile.

Fully aft on the deck, the Jouin Manka soft sculpted sofas, chairs, and tables welcome casual gatherings, always constructed to facilitate maximum views of the sea. Further forward on the al fresco deck, a dining table is embraced by glass curves forming the stairway to port and storage to starboard.

Glass doors open to the small salon just forward, connecting it to the al fresco dining and lounge space. Large, full height windows to port and starboard welcome natural light. Silk carpet on teak flooring lightly anchors the space, graced with additional Jouin Manka furniture in soft curves with a soothing organic feel. Double doors open forward to the gallery amidships, with elevator, day head, and stair to starboard. To port, a galley and service stair allow guests to enjoy drinks and dining without interruption.

Further forward through an additional set of double glass doors, the exquisite living room salon's full height glass arcs around the forward rim of the deck, offering glorious views of the route ahead.

As with other areas of the yacht, carpets and ceilings reflect hydrographic relief mapping. Floor and ceiling lighting resemble hurricane lamps. Two maxi sofas mounted on rails smoothly slide to join or separate, allowing guest use to dictate the arrangement. Open and separate for sunsets or movies, closed for entertaining or social occasions, this versatile plan is simply elegant.

Walkways, like the one on this deck and that on the main deck, are broad enough for a two-by-two stroll. Angled glass bulwarks send breezes up and over the guests so the walk is comfortable and enjoyable.

A ladder stair connects the upper deck with the foredeck, which can function either as a helideck or a sunset destination, calling into use an inflatable bow lounge. A removable sun shade gives the space important options.

The Sun Deck

Fully aft, relaxation and informal dining areas combine to echo the aft portion of the decks on all levels. Beautiful Jouin Manka creations continue to soften and cradle guests, pampering them both visually and physically with posh, rounded, organically-shaped sofas and chairs.

Further forward to starboard, a built-in curve of posh white sofa half wraps an oval table, dotted with chairs on the other side. To port, a bar, grill and sink prep area allow for convenient service al fresco. High 11-foot ceilings give the sun deck dome an exceptionally open feel.

Central on the deck, the stairs and elevator sit to starboard, and a day head, small sink, galley area, and service stair are to port. Glass doors at the forward end of the area open onto the foredeck, where a glass front oval shaped spa pool to port and matching size oval sofa to starboard overlook a large sunpad chaise lounge. Perfect for sun worshippers and sundowners alike, the view is more than worthy of a complete exhale.

Relaxation Reinstated

It may be possible for someone to avoid relaxing while on board Kenshō, but an extraordinary amount of effort would be required to do so. Every square centimeter of the yacht is beautifully designed and executed, challenging the norms, bringing nature closer, redefining the yachting lifestyle. Kenshō serves as a reminder: It is definitely time to return to equilibrium. ⊕

Specifications

» Length Overall	m 74.85
» Moulded Breadth	m 12.8
» Moulded Depth	m 7.0
» Design Draft	m 3.3
» Owner and Guest	No.16 (8 cabins)
» Crew	No.19+1 (12 cabins)
» Cruising speed	13.6 knots







*Your Superyacht Journey
Curated by Navis*

NAVIS Superyacht Consulting

NAVIS

Take the first step towards your perfect yacht experience.
Get in touch with us at +1 (786) 406-6111 or email info@navisyachts.com
Let us help you create your ultimate yachting adventures.

Perini Navi 45m

BLUSH

Photos: Billi Black, Carlo Borlenghi | Words: K.L. Turner







Poseidon Approves: Perini Navi 45-Meter Blush

According to Shakespeare, a rose by any other name would smell as sweet. The same may be said about yachts. Many bear names different from the ones bestowed upon launch. When changing a yacht's name, elaborate ceremonies honoring Poseidon and the four directional gods of the sea often take place, celebrating by sharing a favorite beverage with guests. Champagne? Yes please.

Known as Helios upon its launch by Perini Navi in 2007, the 45-meter sailing yacht Blush appears to have won Poseidon's favor, both with its new name across the stern, and with its brilliant 2018 refit

A formidable racing yacht and luxurious cruiser, Blush has an impressive history in celebrated sailing races from Porto Cervo to St. Barth, earning respect and fans around the world. The second yacht in the Perini Navi 45-meter series, Blush is instantly recognizable for the gleaming dark red hull, sui generis among the Perini Navi fleet

Flexible cabin layouts, fabulous decks for both sailing and socializing, extraordinary engineering, and a lovely new palette of soft interiors in varying degrees of blushing pink make this yacht a standout. The mix of silky smooth deep mahogany with rich textures and metallics makes Blush a divine escape for exploring the Mediterranean Sea from east to west.

By the Numbers

Forty-five meters from tip to toe, Blush sports a beam of 9.73 meters and a draft of 3.90 meters, keel up; 8.75 meters, keel down. Blush's naval architecture has an impressive pedigree resulting from cooperative efforts between Perini Navi and Ron Holland. Interiors were designed in house by Perini Navi. Accommodation is for up to 12 guests in 4 cabins convertible to 5 with quarters suitable for 7 crew.

Built with a steel hull and aluminum superstructure weighing in at 315 GRT with a maximum displacement of 362 T, Blush is powered by a Caterpillar C32 1100 HP main engine with maximum power of 720kW and maximum speed of 13.5 knots. At 10.5 knots, Blush has a range of 4,100 nautical miles. The main mast height of 52.10 meters above DWL supports a total sail area of 1158 square meters. Blush carries 8200 liters of fresh water, and 31,300 liters of fuel. She has 2 Caterpillar 3054 generators with Aqualift muffle



The Main Deck

Boarding the yacht from the stern guests are welcomed onto the spacious teak aft deck with a pair of double sunbeds. A little further forward, under the protection of the hardtop Bimini, a few steps down a central stair open to a gracious pair of matched alfresco dining areas in the 85 square meter cockpit. Banquette seating wraps an L around square tables with fold-out tops. When closed, each table seats four. When open, each seats eight, making room for 16 sheltered place settings

Forward to port, a fixed bar and serving station with fixed stool is backed by a floating stair to port, leading to the flybridge. To starboard, an L-shaped sofa and table are perfect for post meal conversation. This forward section of the aft deck below the hard top Bimini cover can be enclosed, should weather dictate, but open to the elements when nature delivers a pleasant day or magical evening.

Further forward through the glass sliders, the main deck saloon features a fixed mahogany bar with four fixed mahogany bar stools port, looking every bit the proper pub with brass rails for both hand and foot. Just forward of the bar is casual table seating for two.

A sumptuous mahogany bookcase separates the bar area from a conversation and television area further forward, with a trio seating options. Two comfy sofas and an upholstered chair with ottoman around a low coffee table create a divided but still connected space for pre or post dinner cocktails, film viewing, or easy conversations

To starboard, a stair down to the guest cabins offers a mahogany rail for perfect entrances and exits. Just forward of the stair, a large, simple dining table for ten invites guests to sit and enjoy a fine repast while viewing the sea through the picture windows to port and starboard. Mahogany paneling throughout gives the yacht an old world feel, while pale soft furnishings, ceilings, and carpets wash the space with a contemporary mood.

Forward of the saloon, the wheelhouse is visible through nicely framed windows offering privacy for the crew and an interesting view for guests. Impressive mahogany joinery all around gives the yacht a rich, authentic feel. The total combined area of the saloon and wheelhouse is 71 square meters. Forward of the wheelhouse, a spacious foredeck with sunpads and removable shade awning offers guests incredible views. The total outdoor deck areas adds up to 298 square meters.





DOYLE





The Lower Deck

Accessing the guest cabins on the lower deck from the main saloon stair, a lobby leads the way to a combined total of 104 square meters of cabin space. All in, there is a VIP double cabin, two twin cabins that convert to doubles with Pullman berths, and the very spacious owner's cabin that can be divided to make an additional cabin sharing a bathroom.

The two forward en suite cabins with Pullman berths are matched, port and starboard. Aft on port, another twin cabin can convert to a double, depending on need. All cabins are beautifully outfitted with similar color palettes and furnishings, trimmed out with more satiny-smooth mahogany cabinetry, contrasting nicely with the pale palette. Some of the mahogany, like that of the bed in the owner's cabin, has had a Lux Wrap treatment applied to lighten the look and open the spaces.

Fully aft, the owner's cabin runs full beam, showing off its grand proportions. A beautiful mahogany desk sits to starboard below an oblong porthole, with shelves to each side and lighting overhead. Directly opposite the desk, a large, comfy sofa sits below the paired oblong porthole to port. The bed is positioned between the desk and the sofa, leaving an elegant amount of space in this exquisite retreat. The owner's bathroom is a sophisticated mix of marble, glass, mahogany, and mirrors, with the appearance of a chic five-star hotel. To properly accommodate guests, the owner's cabin has a wood panel that can create an additional double cabin, sharing a bath with the convertible twin cabin just forward.

Separated from the guest cabins by soundproofed bulkhead, the engine room sits forward. Forward of that, the galley to port and the crew lounge to starboard, aft of the crew quarters and laundry area. The total crew area is 59 square meters.

The Flybridge

Accessed via the cockpit stair, the flybridge is where most of the navigation action happens. Fully forward, two helm stations with fold down screens offer the best view all around. Just aft, a storage cabinet with counter and sunpad area allows guests to truly enjoy the ride. Here is where you want to be when the stars come out or when the race starts. It is also the perfect spot for a sundowner.

An Excellent Charter Yacht

With appreciable flexibility in the cabin arrangements, Blush is a versatile yacht equally at home hosting a family or an upscale party. The Perini Navi pedigree ensures stability, safety, and comfort from one of the most conscientious builders of large sailing yachts.

Get ready for the ultimate water adventure! Equipped with all the extras, including a powerful 5.7m 565 Williams diesel jet tender with 180hp, our yacht offers two tenders for maximum enjoyment. Glide across the water with the small sunfish sailboat, or choose from our selection of towables for endless fun. But the excitement doesn't stop there! Our toy collection includes three inflatable stand-up paddleboards, four Seabob F5s, monoski, waterskis, wakeboards for all ages, inflatable toys like donuts and a hotdog, a two-man inflatable kayak, and snorkeling gear for everyone. Get ready for laughter, adventure, and unforgettable moments as you connect with the sea in the most joyful way possible!

Sailing throughout the Mediterranean during the upcoming season, Blush is ready to book your calendar dates to secure an extraordinary itinerary, really making the summer of '23 one to remember. Arrangements can be made through Camper & Nicholson's, either online or by phone. Summer smiles await! ☺

Specifications

» Length overall	45 m
» LWL full load	37 m
» Beam (max)	9.73 m
» Draught (keel up)	3.90 m
» Draught (keel down)	8.75 m
» Displacement full load	362 t
» Speed at maximum power	13.50 kt
» Range	4,100 nm @ 10.5 kt

Contact information: Camper & Nicholson's:

Alex Lees- Buckley / Senior Sales Broker
 Mobile: + 33 6 1150 0716
 Email: aleesbuckley@camperandnicholsons.com





blush
MOTOR YACHT

FWC

Luxury Products Marketing

MIAMI - t: +1 305 913 1337 - @: info@FWCadvertising.com - www.FWCadvertising.com





CRN 52m

CIAO

Photos: CRN Yachts
Words: K.L. Turner





CRN's Private GG: Balanced Minimalism

CRN's 52-meter creation, Private GG, exudes a calm minimalism that tacitly welcomes every mood humans carry aboard. Solitary or social, meditative or engaging, Private GG delivers a pleasing environment for all.

Achieved through masterful balance of space, color, and texture, Private GG is a study in harmony. Elements are both beautiful and useful. Colors are neutral, but with spark. Shapes are a mix of organic and chiseled. But the most treasured aesthetic on board is generated by the interplay between nature's radiant energy, both day and night, and the position and proportion of elements on board. Private GG nurtures guests with an abundance of space, light, and luxury.

By the Numbers

Private GG, CRN's hull #142 that recently bore the moniker Ciao, was launched in May of 2022 from parent company Ferretti Group's Ancona yard. Successful sea trials led to delivery in July of 2022 and an inaugural Mediterranean cruise. The season highlight came in an appearance at the 2022 Monaco Yacht Show.

Constructed entirely in aluminum with a near-vertical bow, Private GG carries ten guests in five cabins on five decks served by eleven crew. Lean, light and taut, the sleek 499 GT vessel has a nine-meter beam that slips through the water at a maximum speed of 16.5 knots, with a draft of 2.10 meters. A cruising speed of 14 knots takes guests to gorgeous destinations within a 3,600 nautical mile range. Two tenders, a Williams 625 Diesel Jet and a 525 Jet, deliver guests and complete shore errands.

Powered by two Caterpillar C32 ACERT SCAC IMO Tier II engines and fitted with a Zeno o ekW127 rpm 400V 50 Hz generator, Private GG is lighter and more efficient than many yachts in its class. Naval architecture completed by CRN engineering assists to ensure solid performance.





Exteriors from Omega Architects, Interiors from Massari Design

Omega Architects, a Dutch firm founded in 1995 by Frank Laupman, is known for a broad range of backgrounds and education. Their team, working synergistically to add value at every stage of the design process, is versatile, flexible, and innovative, translating owners' commands to finished projects through good communication and an international environment.

Interiors are from Italian flagship firm Massari Design. Founded in the 1970s by Luigi Massari, the firm is a beacon upholding Italian workmanship. Known for innovative, avant-garde solutions, their designs feature intimate, modern spaces.

The Big Picture

Long and lean, Private GG runs extensive lines of uninterrupted glazing fore to aft, treating the eye to an ultra-smooth profile. Echoing the deck lines and low gunwales, the tinted full height windows act both as a design element when viewed from the exterior and an extraordinary enabler of stunning views from nearly every indoor perch.

The warm neutrals in silvery taupes and shades of mercurial grey invite guests to a comfortable, uncomplicated world, rich with texture. Contemporary craftsmanship in hammered metal, artfully worked cabinetry, and slate wall treatments all emphasize the beauty of nature's materials.

Spots and slices of lovely red kisses dot the decks. Shiny lacquered tables up the tempo just a bit, while keeping with the minimalistic theme. Contemporary and informal yet welcoming and comfortable, the overall effect is pleasantly relaxing, particularly so in the nearly imperceptible transitions connecting outdoors to in.

The Beach Club

Sitting in the lounge area of the beach club, a simple sofa in a cushy right angle sits snuggled up to a bar, a large screen television at the ready. Cleverly disguised storage with alternating vertical teak and mirrored panels echoes the teak flooring. Fresh ocean breezes wander through the lounge via the opened stern transom door and the starboard fold down platform, also convenient for boarding the yacht.

Forward of the lounge, the wellness area with sauna, shower, and day head pamper guests with tranquil therapy. Aft of the lounge, with the transom open, the beach club platform hosts chaise lounges, poufs, and small tables. Stairs to both port and starboard lead up to the main deck, where fully aft, the spa pool awaits. Skylights beneath the pool beam filtered light into the beach club below.

Forward of the beach club, separated by a bulwark, the engine room is accessed via a starboard door. Clean and walkable, it is well-thought through and state of the art.







The Guest Staterooms

Accessed via the central stair amidships, the four guest staterooms are calmly dressed in rich neutrals, accented with just the right crimson touches to balance the design. Intriguing textures and patterns are similar to those throughout the yacht, with horizontal wood grain paneling, glossy black surfaces, and subtle lighting. Luxurious white towels and linens are adorned with warm neutral embroidered striping. Stylish en suite baths quietly respect every guest.

The Main Aft Deck

Framing the pool lounge, a continuation of the deck above arches smoothly along both port and starboard sides, guarding the upholstered sofas and chairs forward of the pool. Dotted with casual pillows in a range of greys surprised by occasional punctuation of red, the grouping is served by organically shaped low height tables with the appearance of wet pebbles to host convenient drinks, snacks, and necessities.

The Main Deck Saloon

Broad sliding glass doors open forward of the aft deck into the saloon, continuing the peaceful, balanced effect upon entry. Floating consoles to port and starboard display fine craftsmanship as wood grainlines rise and fall, meeting perfectly at the corners. Hushed lighting beneath the consoles shares illumination with narrow lines of light rimming mirrors above the consoles. A glossy black finish on the tops on the cabinetry and in the frames of the mirrors pair well with the burnt sienna and espresso grainlines of the wood.



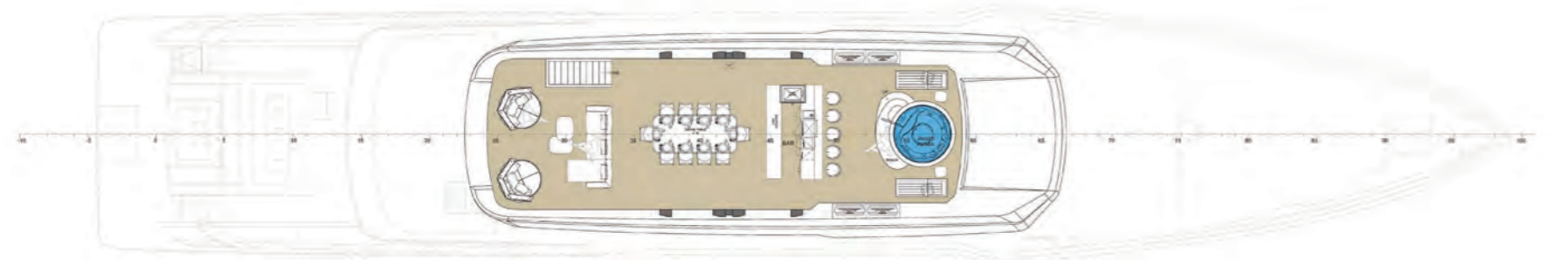
Stepping onto the pale plush carpet atop a pale wood floor in the main saloon lounge, the exceptionally open view to both port and starboard thoroughly expands the space. A deeply upholstered, clean-lined, neutral sofa forms a right angle, anchored by a scoop of red lacquered tables. Yin and yang juxtapose soft with crisp, muted with bright, all pulled together by the shades of grey with multiple textures and just the right amount of shine. Pale, semi-translucent, Japanese inspired shades fold down to varying lengths, letting in as much light and visibility as desired.

Forward of the saloon lounge, a black marble dining table for ten beckons guests to slide into the warm neutral taupe leather chairs, designed ergonomically and handcrafted with true skill. Forward of the table, a long floating console with glossy black top and underneath lighting echoes the entry. A large screen television sits over the console.

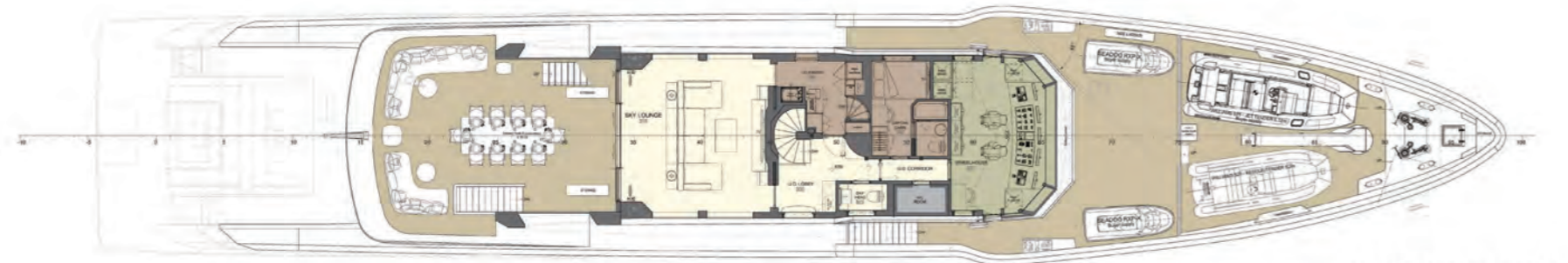
Lighting throughout the saloon is unobtrusive, contained in black ceiling strips that run in transverse bars between beautiful warm wood panels. Spotlights and speakers are subtly positioned overhead as well. Vertical silver metal panels, lit from behind, flank the console.

Forward of the saloon, the main deck lobby, main stair, and day head are accessed to starboard. To port, the main deck pantry and galley, served by dedicated crew stairs, are convenient and concealed. The large galley in stainless and teak is well sorted with incredible storage, refrigeration, range/oven, and ventilation.

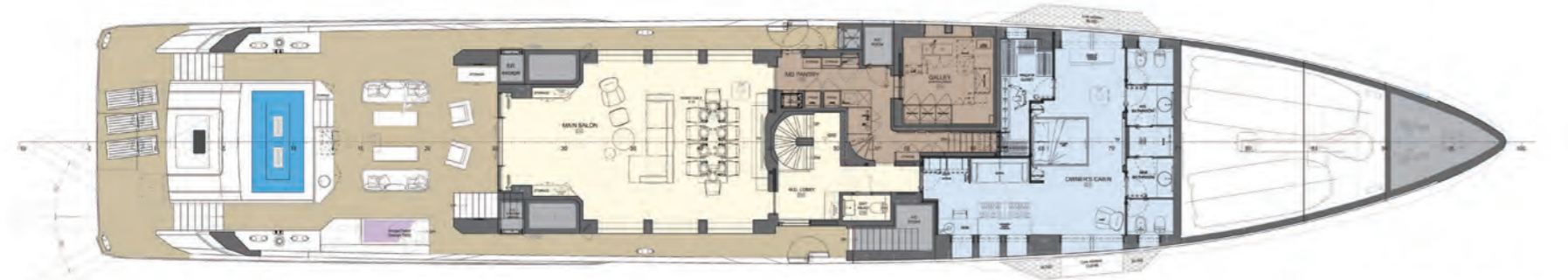




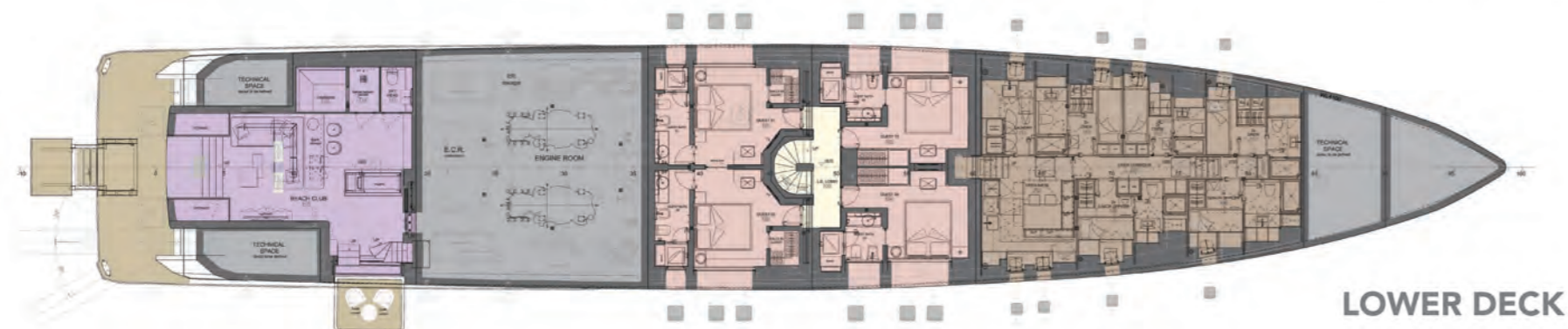
SUN DECK



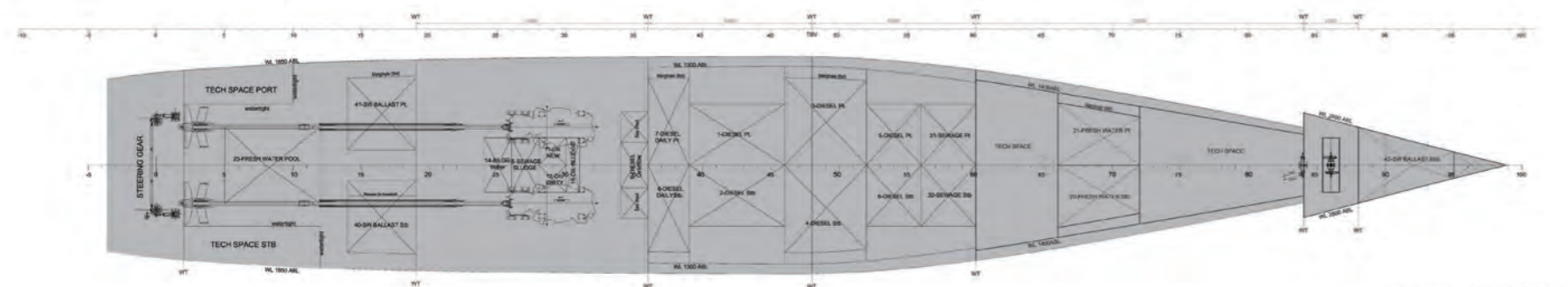
UPPER DECK



MAIN DECK



LOWER DECK



SUB DECK



The Master Stateroom

Forward of the saloon, entry to the master stateroom is through the lobby. The entry door to starboard is offset for privacy, opening to a desk and master stateroom lounge with sofa and storage. Forward of the lounge, the full beam sleeping area of the master stateroom positions the forward facing king bed centrally, with full height views to both port and starboard.

A large walk-in closet sits to port, along with more storage. A large screen television positions itself on the separation between bed and bath. Dual toilet areas, sinks, and storage ensure privacy. Shared access to a central shower, enclosed in glass, features a marble shower bench.

The Upper Deck

Accessed via the central stair and lobby, the sky lounge on the upper deck is graced with all of the main deck saloon accoutrements in addition to a large screen television. Aft of the sky lounge through glass sliders, the outdoors opens to guests for an exquisite al fresco dining and lounging area with posh sofa seating, and a rectangular dining table for ten. A stair to port leads to the sun deck, while a stair to starboard returns guests to the main deck.

Forward of the lobby amidships, a day head and a pantry to starboard with separate staff stairways, offer convenience. The captain's cabin is positioned to port. Further forward, the wheelhouse commands a grand view, with expansive glazing, five screens, and a full complement of technical necessities. Two ergonomic captain's chairs and a stern yacht camera screen above the windows complete the space.

The Sun Deck

Accessed via the port side stair from the upper deck, the sun deck is a glorious celebration of everything nestled below. Fully aft, sun beds and an upholstered sofa with tables greet the sun, moon, and stars. Just forward, beneath the protection of the Bimini, alfresco dining for ten welcomes a fabulous feast. Forward of the table, a full bar with sink serves both forward and sternside, with five fixed bar stools on the forward side. Fully forward, a Jacuzzi spa with aft bench and chaise lounges to port and starboard looks out upon the horizon. Ahh, to be aboard such bliss.

Amid the Magic

The tone on board Private GG is set by each individual, the yacht quietly operating in the background, fostering the perfect setting for an ideal voyage. Almost as if omniscient, the yacht perceives guest needs with the favorable intent of creating a halcyon voyage, memorable for all of the right reasons.

When the time eventually comes to disembark at the end of an utterly enchanting voyage? Just this: GG, CRN. GG. ☺





Oceans of Possibility

Felicità

35.35m (114' 7") | Benetti | 2002 (2022)
Exclusively for sale with C&N



The Original Yachting Company

SALE & PURCHASE | CHARTER | NEW BUILD | YACHT MANAGEMENT | CREW PLACEMENT | INSURANCE | CHARTER MARKETING | MARINAS
www.camperandnicholsons.com | cni@camperandnicholsons.com | +33 674 747 622 (WhatsApp)

Camper &
Nicholsons
International
YACHTING SINCE 1782



Maxis to One Designs

PALMAVELA 2023

Photos: Maria Muina, Laura G Guerra | Words: K.L. Turner





May 3, 2023 was a beautiful day on the island of Mallorca. Of course, that's to be expected. The largest of the four Balearic Islands, Mallorca has the benefit of 300 days of sun each year. Home to more than its share of beautiful, gothic-style buildings, orange and olive orchards, and charming hillside villages, this pleasant island also hosts one of the most important regattas of the season: the PalmaVela at Real Club Náutico de Palma.

Gathering 1500 crew and 120 Boats from 20 nations for the 19th edition of this iconic regatta, the competition was, as always, fierce but friendly in and around the harbor. Crews were busy on board the boats as they went about their tasks, aiming for perfection in preparation for the race. Scampering to the tops of the towering masts, cleaning, organizing, checking, and double-checking that everything was in its place, their tasks were to see their boats were shipshape to vie for the win.

A four day, multi-class race, PalmaVela welcomes imposing 30-meter Maxi class yachts as well as eight-meter One Designs, with J80s and Dragons in between. This year, the Six Meter boats made their debut as part of the race. The One Design class, with 23 entries, was scheduled to compete in nine windward-leeward races over three days, competing for the coveted Balearic regatta title. If conditions allowed, the big boats would complete six races, two of them coastal. Here's how it all unfolded in this year's first big race of the 2023 regatta season, and the start of the IMA Mediterranean Maxi Inshore Challenge.

The Club

Welcoming owners, crew, spectators, and press, the Real Club de Náutico de Palma has been safely tucked into its spacious harbor along the Paseo Marítimo since the 1940s. The club is the result of two clubs joining forces: the oldest yacht club in Mallorca, the Club de Regatas formed in 1891, and the Club España formed in 1919. Today the club has 2000 members and more than 1000 moorings, in addition to indoor and outdoor pools, a fascinating library, gym, members' bar, and a highly rated restaurant, the Nautic.

Nestled next to the best shops and restaurants on the island, the club is also close to stunning structures like the majestic 14th century Cathedral de Mallorca La Seu, the Royal Palace of La Almudaina, and the Castell de Belver. It is hard not to be thoroughly enchanted by the rich cultural, historical, social, and geographic features of this wonderful island.

Hosting an owner's cocktail party at the Pura Grand Hotel, The Real Club de Náutica set a high-spirited tone for the days of racing ahead. The club had a full schedule of parties and entertainment planned, aimed at keeping guests engaged and up to date on the events of the day. For its hearty hospitality, passion for sport and sea, excellent organization and management, the club received the Grand Prix award for 2022 from the Mediterranean Sailing Circuit as the best club in the Mediterranean.

While the club is exceptional, the city of Palma is well known for its nightlife. Those who didn't have to get up early to race wandered off to explore Palma's clubs, music, wine bars, and discos. Those who did not give this trip the extra day or so it deserved on each end to enjoy the richness of the island have undoubtedly found themselves considering a return to fully appreciate this popular destination.



The Race

On April 29th, 2004, a new regatta for Maxis made its debut as Maxi Race Week. In its mission to show the wide range of possibilities offered by sailing, the competition directors were determined to welcome all types of sailors, and to embrace boats of all sizes.

This emphasis on integrating diverse vessels and backgrounds has earned PalmaVela great status as a referential sailing event. It is a highly anticipated regatta for big boats and small boats alike, inviting participation in a sport that has a reputation for being rather exclusive. Whether IRC, ORC, TP 52, Monotypes of Swan, J80, FF, or Dragon, or a graceful Classic boat, or HANSA handicap accessible boat, participation at PalmaVela is welcomed, with a strong effort made to maintain an objective of inclusion and openness.

The high quality of big boat racing at PalmaVela makes it a favorite for the owners and crews of the maxi yachts. The facilities at Club Náutico de Palma ensure everything is well planned and well executed, just as expected with an international event combining a high level of sport with social and environmental pursuits.

The Maxi A Class Results

Race day one, on May 4, 2023, served up a great backdrop with good winds and pleasant weather all around. On Thursday's coastal race the Maxi A class found David M. Leuschen's Wally Cento Galateia, out of the New York Yacht Club, placing first with a time of 2 hours, 29 minutes, and 16 seconds, followed by Miguel Galuccio's Vera in second, and Sir Lindsay Owen's Wally Cento Magic Carpet Cubed, out of The Royal Thames Yacht Club, in third. This trio was followed by Benjamin Potter's 24-meter Luca Bassani Wally Rose, Francesco de Santis's 30-meter Morgana, and Andres Varela's Vismara 68 Pelotari.Project.

On race day two, May 5, 2023, Maxi boats raced two windward-leeward courses for Races two and three, again with nice weather and wind conditions. Race two saw Galateia crossing the line first, followed by Vera and Magic Carpet Cubed, with Rose, Morgana, and Pelotari.Project following the leaders.

Race three mixed things up a bit. Top slots went to Magic Carpet Cubed, Rose, and Galateia in the 1, 2, 3 finish order, followed by Vera, Morgana, and Pelotari.Project. Spoiler alert: that was the only race to prevent Galateia from earning a perfect score in the regatta.

For the remainder of the regatta, Galateia and Magic Carpet Cubed were engaged in spirited jousting for the top spot, particularly in Race 5. On a challenging, 19-mile coastal course plagued by sub 10-knot winds, Magic Carpet Cubed led around the first turn, making excellent use of the upwind. It was Galateia, however, that pulled around the next mark and into the lead with a skillful Code 0 downhaul, as Magic Carpet Cubed took an inshore route hugging the west coast, stranding the vessel in the Bay of Palma without wind for a few moments. The Magic Carpet Cubed crew did not give up, but raced mightily to the finish with just minutes and 4 seconds separating their finish time from Galateia's.







Galateia, capturing the top spots in races four and five on May 6th and 7th, earned the overall win for the Maxi A class with five point between them and the second place yacht. Magic Carpet Cubed raced to fourth in the fourth race and second in the fifth race finishing with a second place overall position. Vera took third, followed by Rose, Morgana, and Pelotari. Project, which did not finish

Galateia not only won the Maxi A class at PalmaVela, but was also awarded the trophy for the best placed IMA Member, setting her up nicely for this year's Mediterranean Maxi Inshore Challenge.

The Maxi B Class Results

The Maxi B class was won by Ermanno Traverso's Stormvogel, an incredible yacht with great history. Hampered by the lack of wind, blowing at just 2.5 knots in the last 90 minutes of the race, Stormvogel fell behind Guillaume de Montailier's Truly Classic 90 Atalante, crossing the finish on the last day more than an hour behind the leader. That second place finish, under IRC corrected time, allowed Stormvogel to take the win by a single point.

An interesting yacht, Stormvogel is considered to be the first large, lightweight racing yacht Maxi, built in 1960 and launched in April of 1961. Groundbreaking and controversial, the yacht has an interesting backstory, but that's for another time. Suffice it to say that at 60+ years of age, she remains a contender.

Additional Class Results

With lots of exciting racing in the remaining classes, the results for those races follows. Full results can be found at palmavela.com/resultados.php, courtesy of the Real Club Náutico de Palma.

The ORC 0-1 Class was won by Christian Plump and Javier Sanz aboard Elena Nova by half a point over José María Meseguer's Pez de Abril. ORC 2 saw a win by Maciej Gnatowski on Scamp Three, with all three teams in the class finishing within four points of each other. The wins in ORC 3 by Kai Mares on Immac Fram, ORC 4-5 by Scott Beattie taking Just the Job to a first place finish, a ORC Sportboat with John Walker aboard completed the ORC classes.

A win by Tom Liesenhof aboard Marigan in the Époque class, Marcus Schiermann on Little Thila in the Espíritu de Tradición class, María Bover on Team Belearia RCNP in the J80 class, Carlos Carbajal aboard Capa in the Dragon class, and Patrick Monteiro de Barros on Seljm in the 6 Meter class added to the list of first place finishes. Jordi Zaragoza won the ORC A2 (0-3) class aboard La Orana, while Miguel Roig steered Blaumarina I across the finish first in the ORC A2 (4-5) class

Prizegiving was nearly as exciting as racing, with teams taking their places on stage and accepting framed prints from artist Miguel "Capi" Sánchez-Cuenca, a selection of gift bags full of sailing-related surprises, plaques, and congratulations from the Real Club Náutico de Palma.

Even though exact dates for 2024's regatta have yet to be announced, make sure to save space on the early May calendar to attend the spectacular 20th edition of this diverse, competitive sailing race. Don't forget to book a few days around the races to take in all that Mallorca has to share. See you there! ☺



The Balthazar Project

We protect what we love.

So fall in love with the sea and care for the beauty of the oceans.

The Balthazar Project is founded as a non-profit organisation contributing to the knowledge of the sea.

Let's act for their preservation.



Sharing means caring.

www.thebalthazarproject.org

Lamborghini

REVUELTO

Photos: Mediacart, Lamborghini Media | Words: Jorge Arcuri



Revuelto: Lamborghini's Reverie of Past and Future

We can begin this brief narrative about a newborn from the famous House of Sant'Agata Bolognese by saying: "once upon a time...", because surely we could not go wrong!

Revuelto in Spanish means: lively, turbulent, mixed, but also, slightly separating the first syllable, e-vuelto, meaning "returned".

This might seem like a play on words, but it hints at the profound essence of this supercar. Revuelto signifies eviving an important part of Lamborghini history: it does this in its mechanics, with a new twelve-cylinder engine (like when the History began); it does this in style, with a body that accentuates the longitudinal lines, reminiscent of the unforgettable Countach, along with the forward slope of the Murciélago, the rear details of the Diablo, and the vertically opening doors... all elements contained in the rich, fascinating, and unique Lamborghini DNA!

However, it does not end, as one might think, in a mere return to styles of the past. Revuelto draws from its historic DNA, but it is primarily designed towards the future, not just aesthetically, which is still highly innovative, but also for its advanced technological content.

This is the first Lamborghini super car to feature plug-in hybrid technology, with unique characteristics and performance.

In addition to the naturally aspirated 6.5 lt V12 engine, there are three electric motors, two front ones and one integrated into the new 8-speed dual-clutch transmission. This engine group allows driving in hybrid mode or in electric-only mode, with a total combined power output of 1015 HP!

The all-wheel drive is provided by the rear engine-transmission group and the two front electric motors, the latter guaranteeing traction when the car is in electric-only mode, but, if necessary, it is also possible to engage the rear electric motor.

Revuelto adopts a new platform that will also be the basis for future models and that has been designed to house the new and compact transverse gearbox behind the 12V thermal engine, leaving room for lithium-ion batteries in the position corresponding to the central tunnel. This new platform, along with the newly conceived carbon chassis - of the monocoque type - makes Revuelto's structure 10% lighter and 25% more torsionally rigid than the Aventador's.





Suspensions, rear wing, roof aerodynamic effect, and rear diffuser work together controlled in real-time by the Lamborghini Vertical Control system specially designed for Revuelto. Engines, suspensions, and aerodynamics allow incredible flexibility and selection of driving modes, which are selectable by two knobs located on the new steering wheel. One allows for setting three options: Charge, Hybrid, and Performance, the other four: City, Road, Sport, and Race. This way, 13 dynamic driving settings can be achieved according to different road characteristics, the situation of the moment, and the driver's pleasure.

In the infotainment and connectivity sector, Revuelto offers an entirely new system called Human Machine Interface (HMI), which consists of three 3D graphics displays, easy and intuitive to manage, both by the driver and the passenger, who can access the system and, not only use it but also have a view of the technical data related to the operation of the car.

The interface with the driver allows for managing the considerable technical content of the car, many commands can be customized as well as the display of information provided by the vehicle.

NAVIS has always given priority to aspects related to good Design and the beauty of what man designs and creates, so now we must try to convey to you readers the impressions and sensations that Revuelto emanate from a design perspective.

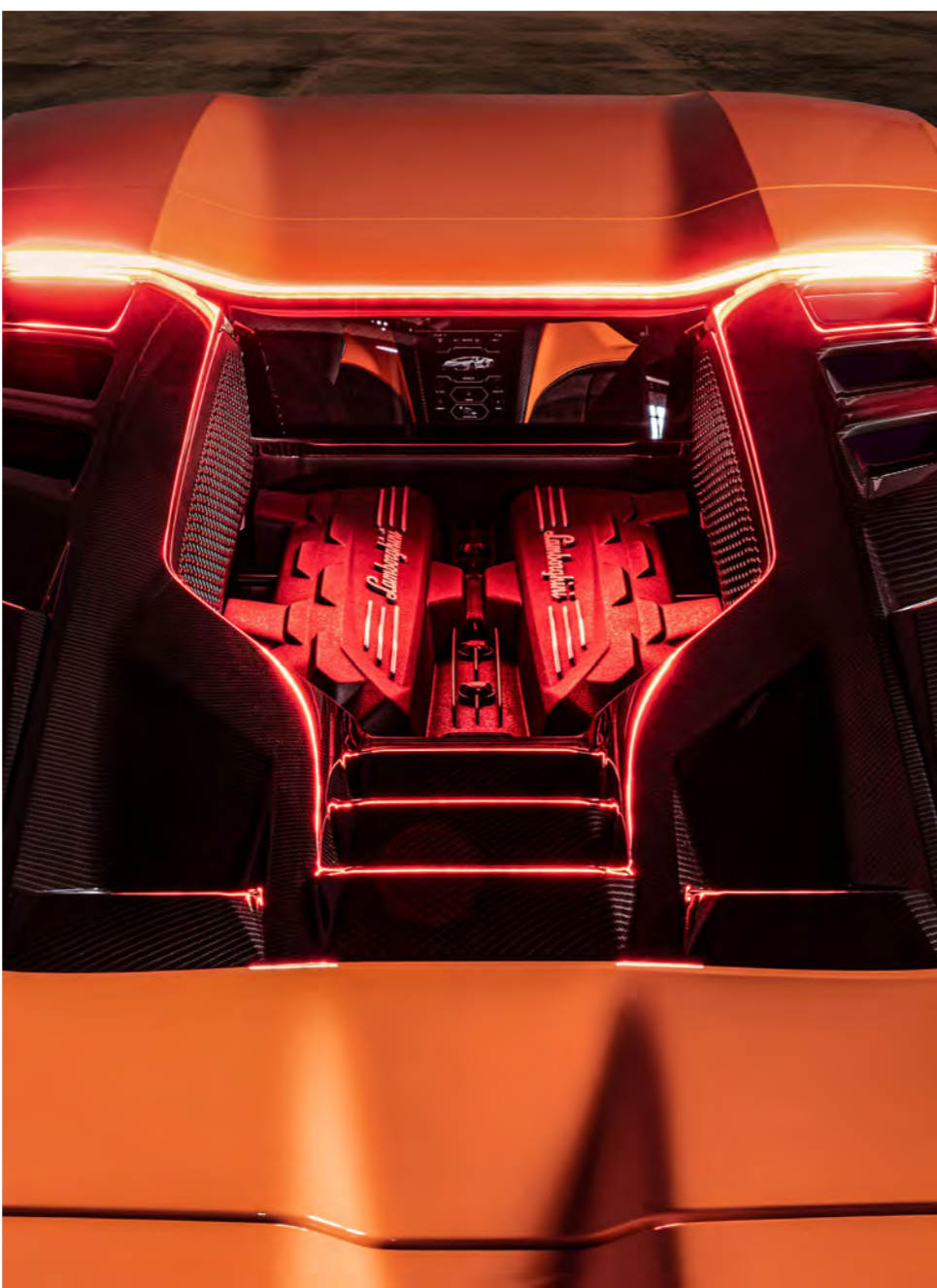
As we mentioned at the beginning of this piece, the car does not deny the DNA of its extraordinary ancestors. As a Senior car designer, I'd say it rekindles their spirit and, in a way, nobly projects it into the future.

The vehicle's body is slender, yet simultaneously compact and aggressive, as befits a Lamborghini product.

Looking at the side view, we immediately notice diagonal lines from top to bottom creating a strong stylistic motif with a dynamic effect. They're not mere shape play; they frame the front Y-shaped lights, the exit vent of the front wheel arch, and the rear air intake. Likewise, the line of the rear pillar gives momentum to the cabin volume with an elegant "jump" from the roof to the fender.

The roof has a central lowering that continues towards the tail, imprinting the rear wing which, in turn, frames the two hexagonal exhaust pipes. The engine is exposed, bordered by two sets of slits that follow the roof's silhouette. The hexagonal pipes are part of the tail group along with the rear lights also shaped like a Y. The overall result is very proportionate and beautiful with the aggressive dark aerodynamic diffuser beneath

The front maintains the unmistakable Lamborghini stylistic trademark, very inclined, low, and in perfect continuity with the windshield. Below the headlights and daytime running lights, we find two large air intakes framed by a lower spoiler. I'm convinced that this combination of lights, air intakes, hood, and spoiler creates such an aggressive image that I'd give anyone facing the Revuelto one piece of advice: "...move over!"







Let's now take a look inside this supercar.

Here too, speaking of the general architecture of the environment, we sense, at least in part, a return to the past. Recall the interiors of previous models, for example, the Aventador, which had an almost aeronautical dashboard and cockpit, a high central tunnel merged into a single unit with the horizontal development of the dashboard. In the Revuelto, the tunnel, like its ancestors, is low, penetrates under the dashboard, frees more space between the two seats, and creates a more open environment, more shareable with the passenger who, thanks to their personal display, can enjoy the sensations of a true co-pilot.

This does not detract from the awareness of being in a special car; the controls are simple and clear but placed in the right place with excellent ergonomic study. We can say the same about the console; the instruments, though they're in reality an electronic display, have an analog-type appearance with the large, central tachometer. The steering wheel groups, within reach, a good number of important controls relating to the vehicle's dynamics and the multimedia system, inspired by those of the Lamborghini Squadra Corse.

The newborn brings together the highest and most innovative technological level while giving us, at the same time, those feelings that only the Brand of Sant'Agata Bolognese can give, both in terms of performance and the marvelous history of creativity and quality. ⊕





losjabones.com

FINE NATURAL SOAP

SEGOVIA · SPAIN



A Belmond Hotel, Portofino
A NEW DAWN AT
SPLENDIDO

Photos: Tyson Sadlo | Words: Janine Devine



Nestled along the pristine Ligurian Coast lies the enchanting bay of Portofino, a glittering jewel in the crown of the Italian Riviera. For over a century, connoisseurs have flocked to its tranquil allure, captivated by the mesmerizing sea breezes and breathtaking vistas. The vibrant seaside piazzetta, along with the unspoiled harbor, make this locale an enticing destination, often touted as the Mediterranean's most beautiful port. The best views, undoubtedly, come from the hills rising from its rocky shores.

Perched on these scenic hills lies the Splendido, a Belmond Hotel, a revered sanctuary cocooned within a verdant, protected forest. This luxurious retreat is set on the remains of a far older Benedictine monastery standing guard with its timeless opulence that has long ensured it remains an intimate and much coveted retreat. 70 elegantly appointed rooms. Its secluded setting, offering an intimate haven, has been cherished by guests for decades. Splendido Mare, its sister hotel, is closer to the port. However, the original Splendido's private location provides ample space for indulgences like a heated seawater pool or an outdoor massage within the hotel's secluded garden gazebo. The pool is an essential here, as piccolo Portofino has no beach of its own. The Benedictine monks who eventually abandoned their monastery due to constant marauding by Saracen pirates certainly underestimated the value of this exquisite location. Thankfully, Belmond is acutely aware and has been preserving and improving on Splendido's heritage since it first acquired the property back in 1986 when the brand was known as Orient Express.

Historical Heritage Meets Modern Luxury

Following quickly on the heels of the announcement of the hotel's new managing director, Alberto Pirozzini, who arrived in August 2022, this "Sleeping Beauty" underwent a series of extensive renovations and introduced a new executive chef during its seasonal closure. These are key moves that have only strengthened this iconic hotel's appeal. When Splendido opens for the summer season on June 8th, these renovations unveil a refreshed pool area designed by landscape architect Marco Bay. The revamped pool features deep green-blue tones of the Ligurian sea below the hotel, while the surrounding terrace showcases a mosaic of sea creatures set against contrasting tones of pink, red, and white stone. The pool still provides splendid views of your superyacht – and others -- in the harbor.





The interior refurbishment, spearheaded by Martin Brudnizki Design Studio, the firm long known for skillfully infusing sophisticated contemporary flair into hotel and restaurant projects. The refurbishment was done with a conscious respect for the hotel's illustrious history and their contemporary design sensibilities seamlessly blend with the traditional architecture, enhancing the overall ambiance at the Splendido Grill Restaurant, the casual all-day dining venue which boasts the same extraordinary views as the pool. The Grill features charming hand-painted green and white tilework reminiscent of Albissola ceramics, which also are found in the guestrooms. A retractable sunroof with stripes of terracotta and green against white protects against glare and Murano glass pendants illuminate the terrace at night.



The elegant Baronessa Suite has also been meticulously restored, its frescoes and curated antique furnishings paired with state-of-the-art amenities such as enhanced soundproofing, and lightin which automatically adjusts to the time of day. Both features demonstrate the combined commitment of Brudnizki Design and Belmond towards a harmonious blend of comfort and elegance designed to deliver guest experiences that combine the best of the past, present, and future. Throughout the resort, a sense of timeless elegance permeates the premises, a stately sanctuary where tradition and innovation come together harmoniously.



Culinary Excellence

The transformation over the winter also extended to the epicurean experiences on offer with new Executive Chef, Simon Tognetti, at Splendido Grill. A native of Lombardy, Tognetti is an impassioned world traveler and food stylist who will be making a return to his Italian roots with a fresh perspective on balancing modern techniques and traditional cuisine infused with local flavors. e will also be overseeing the new vegetable garden created in conjunction with La Portofinese Ecofarm

Enchantment Re-Awakened

Splendido, a Belmond Hotel, a timeless emblem of luxury and elegance, has thus reaffirmed its position among the world's finest hotels with these thoughtful renovations and the introduction of latest culinary maestro. Each improvement blends seamlessly to ensure that this splendid beauty remains a treasured, intimate oasis. ⊕







A French Haven in the Heart of Manhattan

BENOIT NEW YORK

Photos: Alain Ducasse Media | Words: Janine Devine.

A little Parisian haven resides on Manhattan's West 55th Street, the center of the city's beating heart. Benoit New York is the city's French-accented pulse in proximity to shopping, museums, and theater. The original Benoit on Paris' Rue Saint-Martin has been captivating palates for over a century with classic Parisian bistro fare. Alain Ducasse referred to it as "...a beautiful house where conviviality and gluttony reign" and incorporated it in 2003 into the vast Maison Ducasse empire. Ducasse then recreated a New York version in 2008, taking up the long-vacant, former home of La Cote Basque on 60 West 55th Street, once a haven of writers and Manhattan elites.

Upon entering Benoit New York, one is struck by the far view of the dining room's vast horizon: deep red banquettes, tables, brass fittings with frosted white globes, and the mirrors which multiply any movement. But to the immediate left of the entry, the wine bar area is visually more serene and beckoning with its colorful ceiling and mosaic-tiled floor, iron and marble tables, rattan chairs, and newspapers draped from old wooden hangers. To the immediate right, a fireplace banked by armchairs à deux, creates another restful place to raise a glass (and there is quite the wine list here). Having worked in Saarinen's Black Rock building on 52nd Street, Benoit was always convenient for lunches, after-work drinks, and dinners. It was interesting to see it in a less frenetic light.

But the day was sunny, the weather brisk but pleasant and soon, all that changed. Benoit became buzzy, celebrations convened beside discreet distances from business luncheons, and old and new friends re-acquainted, along with shoppers and locals. The lunchtime ambience is both very smart and a bit casual. Wait staff were on-point, engaged, friendly, and exceptionally eager to help.

The menu tempted with a bevy of French standards, with starters like onion soup, a tarte flambée, escargots, pâté en croûte (adhering to a Parisian-pleasing 1892 recipe), followed by traditional options like cassoulet, chicken roti, beef pot au feu, and a half-dozen other delights, accompanied by sides such as Benoit's incomparable pomme frites. We started with the tarte flambée which, according to multiple very approving waiters, was the perfect choice. This Alsatian version of pizza was an exquisite gustatory romp. Even though compelled to share with my dining companion, it was substantial, leaving little room for forthcoming romps. We were surrounded by others savoring their onion soup gratinée with the reverence usually devoted to a religious sacrament. A savory amuse bouche followed, personally presented by the ebullient executive chef, Alberto

Marcolongo. The colossal cannelloni-style pasta richly dressed in the nuanced flavor of an aglio, olio and peppe oncino base made for an unexpected delight. Admittedly, I fan-girled, but Chef Alberto was charmingly gracious and appreciative.

The entrées appeared, roasted duck with roasted carrots looking like a renaissance painting for the gentleman, while my quenelles brochet (pike) with Nantua sauce produced a heavenly cloud of aroma. This Lyonnaise dish was redolent of white wine, cream, and shrimp and delivered with abundant quantities of quenelles. And it was at this time that Benoit Paris transported itself to New York, with a full dining room, waves of conversation, occasional applause, accompanied by choreographed wait staff and a fair amount of glutton.

After the luncheon crowd thinned, pots of fresh mint tea espresso and a sweet dessert on the table, we had the opportunity to chat with Chef Marcolongo, who is a decade-long veteran of Maison Ducasse, both in London and in Paris, after building a resumé at respected restaurants in Lombardy and Singapore. The exuberant, yet thoughtful Marcolongo had worked at Benoit New York as Number Two in 2018 before returning in February 2022. We asked him, given his diverse experiences around the globe, how different a market New York was.

"It is very, very different in each city. It even depends on the competition the restaurant is in. In London (for Alain Ducasse at The Dorchester) we have 3 Michelin stars; here we are bistro, so what the kitchen serves is very different. And each product is different, what is on the menu here is different than in Paris... As chefs say all the time, it's the guidelines we need to follow, so I know what he (Ducasse) wants, what he doesn't want, but it's up to me and my team to combine the New York style with the Ducasse style."

"Being Italian, I cut a lot of butter with olive oil, there are a few things I agreed to keep butter in, like in the risotto, I will use butter. Even for the steak, 'old school' is 100 gr of butter you finish with that, but I'm not that kind of chef... In the south of France, it's very similar, they also prefer the olive oil very much." He quickly reassured us that "the DNA of this restaurant, like onion soup and the flambée, things like that are never going to change."

Benoit New York's superbly delicious food that blends beloved classics with a modern touch, paired with spot-on wait staff is a delight to experience. For luncheon or dinner, or just to nurse a drink and a few appetizers, accompanied by friends, colleagues, or solo, it's apparent why Benoit New York is such a treasured fixture. ☘





Candice Swanepoel

by Jean Claude Dhien
New York - Photography

+1 646 283 3175 | www.jcdhien.com | jc@jcdhien.com

Yachting Apparel for the Summer Season

SETTING SAIL IN STYLE

Photos: Gill Marine Media, Beau Outteridge, Zhic Media, High Mind Studios, Helly Hansen Media,

Amory Ross / 11th Hour Racing, Musto Media | Words: Pablo Ferrero

As the yacht's anchor ascends and the summer season officially sets sail, yacht owners and their discerning crews recognize the importance of being perfectly attired for both leisurely cruises and high-stakes racing conditions. To ensure you're prepared to embrace the lapping waves and salty sea air with unrivaled style and panache, the seasoned experts at NAVIS have hand-selected an enviable collection of the most exquisite yachting apparel from leading brands. In this exclusive guide, we invite you to navigate through the sartorial offerings from Helly Hansen, Gill Marine, MUSTO, and Zhik Marine, providing you with the ultimate roadmap to elevate your yachting wardrobe to a realm of luxury and performance.



Gill Marine: All Geared Up for the 2023 Summer Season

With over 45 years of steadfast commitment to innovation, Gill Marine has once again demonstrated their prowess in product development and rigorous testing as they present their Summer 2023 collection. Infusing the Race Fusion system's legacy - a beloved hallmark of breathability and protection - into their newest offerings, Gill takes the notion of sailing apparel to uncharted territories.

Verso System - An Evolution in Sailing Apparel

The Verso System by Gill is the embodiment of the next generation of sailing and dinghy sailing gear. Comprising a multifunction jacket, trousers, and drysuit, this system offer unparalleled protection, durability, comfort, and fit to those braving the harshest of conditions. As offshore sailor Conrad Colman notes, "the Verso line combines ocean-grade strength with super breathable fabrics that make for a winning combination... the Verso range's new breathable fabric allows me to work harder for longer and still has the strength to manage true ocean conditions."

Verso Jacket

Boasting a streamlined design, the Verso Jacket offers all the features needed for both adrenaline-fueled racing and more relaxed coastal cruising. Gill's proprietary XPLORE+® 3-layer waterproof and breathable fabric forms the cornerstone of this jacket, promising over 20,000mm HH and 80%+ breathability. Additionally, the XPEL® water and stain repellent treatment and fully taped seams ensure a waterproof seal. For comfort and mobility, the jacket features a packable 3-layer hi-vis hood with a 3-way volume adjustment system and a quick-dry fleece inner collar lining. YKK Aquaguard® zips on the front and pocket zips enhance the jacket's waterproof capabilities, while the adjustable outer cuff with PU inner seals and adjustable hem optimise the fit.

Verso Trousers

The Verso Trousers share the same innovative fabric and technology systems as the jacket. With a high-fit design featuring a SuperStitch comfort back panel, adjustable shoulders, and adjustable ankle closures, these trousers ensure a comfortable and secure fit. Additional features include a reinforced cargo thigh pocket with a touch-screen compatible clear front pocket and anti-corrosion YKK Aquaguard® zippers. The trousers also boast reinforced seat and knees for added durability.



Verso Drysuit

The Verso Drysuit is the epitome of all-around wet weather gear. Whether you are a sailor, a paddlesport enthusiast, or a general watersport consumer, this drysuit is designed to accommodate a range of activities. Its XPLORE+® 3-layer fabric construction and Gill's exclusive XPEL® water and stain repellent finish provide complete waterproof protection and maximum breathability.

Gill's Summer 2023 collection truly exemplifies their commitment to performance-driven design innovation, taking the Verso system to the next level. By incorporating world-class fabric technology and intricate design elements, Gill Marine offers ultimate protection for every sailor.



Zhik:
Elevating Sailing Apparel to New Horizons

Renowned for their pioneering spirit, Zhik consistently raises the bar in the sailing apparel industry. Merging advanced material technology, ergonomic design, and impeccable craftsmanship, they create products that enhance performance and comfort on the water. Their 2023 Technical Lifestyle Apparel line continues to push these boundaries further.

Zhik Tech Hoodie

Taking fleece to a whole new level, the Zhik Tech Hoodie features breathable fabric for warmth, with additional 3-layer waterproof panels on the hood and upper sleeves for wind and water protection. With its streamlined, active fit and zippered pockets, it's perfect for deck work, tender driving, or cooler weather conditions. Available in men's and women's sizes in Black, Platinum, and Provincial Blue.

Deck Pants and Deck Shorts

Designed with high mobility and all-day comfort in mind, Zhik's Deck Pants and Deck Shorts are ideal for everyday yachting wear. They feature a recycled 4-way high stretch softshell fabric with a water-repellent XWR® (PFC-free) coating, ensuring easy movement around the boat.



INS100 Gilet

Ideal for milder climates, the lightweight INS100 Gilet is a versatile garment designed for both onshore and onboard use. The fully waterproof Vecta® Fabric Technology shell and medium-loft fleece lining offer torso warmth, while the water-resistant zips and two large side pockets ensure your valuables stay protected. Available in Black, Platinum, and Navy.

Men's Viento 4/3mm Steamer Wetsuit

Maintaining Zhik's reputation for high-quality water sports gear, the Men's Viento 4/3mm Steamer Wetsuit is designed with the same quality of material and attention to detail. This wetsuit's minimal seam design increases comfort and reduces areas of low stretch. The seams are glued, blind-stitched, and fully seam taped with Zhik's new water-based glue formula. This sealing system prevents any water ingress, is highly flexible and incredibly durable.

Zhik Cell Vest

For warmth on and off the water, the Zhik Cell Vest is a must-have. Its slim-fit design features fused core baffling for increased wind and water resistance. The quick-drying Repeve® recycled synthetic insulation offers high warmth without the bulk. Available in Anthracite and Platinum in unisex sizes.

Zhik's commitment to innovation is evident in their latest collection. By constantly pushing technological boundaries, they deliver high-performance apparel that meets the evolving needs of sailors worldwide. With their 2023 collection, they continue to redefine style and functionality in the sailing apparel industry. Experience the Zhik difference and elevate your sailing journey today.

Helly Hansen

No name resonates more powerfully with superior craftsmanship and unmatched performance in the realm of sailing gear than Helly Hansen. Their product range, expertly engineered to brave the trials of open water, encapsulates the perfect harmony of comfort and protection, making them a favored choice of sea-lovers.

The AEGIR Line from Helly Hansen is the very epitome of superior sailing apparel. Designed by the masters of the sea, for the masters of the sea, these garments fuse the most advanced materials with cutting-edge ergonomic design. The result is an unmatched level of durability and performance, allowing you to command the seas with confidence and class.

Men's Aegir Race Sailing Jacket 2.0

Imagine the thrill of standing on the deck, unfazed by the sea's tantrums, cloaked in the fortress of comfort that is the M Aegir Race Sailing Jacket 2.0. HELLY TECH® PROFESSIONAL 4-layer construction ensures a breathable, windproof, and waterproof shield, while the ergonomic cut promises unrestrained mobility. High-visibility, packable hood, adjustable cuffs and hem, and protective face mask ensure that you are ready for whatever the sea throws at you. And, with a composition of 48% recycled materials, this jacket stands as a testament to Helly Hansen's commitment to sustainability.

Men's Aegir Race Bib

Specially engineered for the high seas, the Men's Aegir Race Bib serves as a second skin that moves with you. Its fully waterproof and breathable construction, bolstered by Cordura fabric in key areas, withstands the harshest conditions. Functional design elements like cargo pockets, articulated knees, and a gusseted crotch add to its utility, making it an indispensable part of your yachting ensemble.



Men's HP Foil Match Jacket 2.0

Introducing the Men's HP Foil Match Jacket 2.0. It's not just a jacket; it's a covenant of protection and mobility, offering HELLY TECH® Performance 2-layer construction and 2-way stretch fabric. Adjustable cuffs, waist, and high-visibility details ensure your readiness for the sea, while the packable hood offers convenient storage when not in use. Made with bluesign®-approved materials.

Men's Crewline Cargo Shorts 2.0

These shorts are not just a fashion statement, they're a blend of comfort and functionality that no yachting enthusiast should be without. A gusseted crotch for freedom of movement, cargo pockets for essentials, and belt loops for a customized fit make them a must-have for warm sailing days. With a bluesign® certification, you can sail assured that these shorts adhere to sustainable manufacturing practices, allowing you to enjoy the sun, the sea, and the wind in harmony with nature.



Women's Foil Shell Jacket 2.0

The Women's Foil Shell Jacket 2.0 is the epitome of style meeting substance. With HELLY TECH® Professional 2-layer construction and 2-way mechanical stretch fabric, this sleek jacket affords superior protection from the elements. Designed for the modern sailor, the jacket features adjustable cuffs, an articulated sleeve and a high-visibility hood for added functionality.

Women's HP Hybrid Insulator 2.0

The Hydropower Hybrid Insulator is a harmony of an insulated jacket and a softshell – a testament to Helly Hansen's commitment to innovation. Extra-light and warm insulation, along with a PFC-free, water-repellent treatment, makes it a cozy shield against the whims of the weather. The high collar, D-ring for a kill cord, and the jacket's articulation for maximum freedom of movement adds to its allure. A composition of 40% recycled materials further asserts Helly Hansen's pledge to sustainability.



HH LIFA Active Solen Series

The HH LIFA Active Solen Series by Helly Hansen is more than just apparel. This line of versatile base layers, available as either a hoodie or a 1/2 zip variant for both men and women, offers a blend of comfort and function for every sailor.

Designed using ocean-bound recycled materials, these garments employ LIFA® Active and S.Café® technologies to provide superior moisture management and natural odor resistance. They are crafted to ensure you stay fresh, dry, and comfortable, no matter the conditions or intensity of your maritime pursuits.

Helly Hansen's dedication to innovation, durability, and sustainability shines through in this superior yachting apparel series. As you navigate the open waters, trust in the luxury and performance of Helly Hansen to enhance your sailing adventure.

Musto's All-New, Technologically Advanced HPX Collection: The Pinnacle of High Performance Sailing Apparel

After three years of meticulous research and development, Musto is excited to unveil its highly anticipated HPX Collection, representing the highest standard of high-performance sailing apparel. This comprehensive collection is designed to shield sailors in the harshest marine environments. Featuring the toughest GORE-TEX Pro fabric, advanced technologies, and intricate engineering, the HPX Collection guarantees an unmatched combination of performance and comfort.

The HPX Collection offers standout features such as GORE-TEX Pro fabric across all outer layers, a women-specific outer-layer trouser with a drop seat, GORE-TEX INFINIUM™ mid-layers, and robust base layers with reinforced elbows and knees. Developed in collaboration with the 11th Hour Racing Team, the XVR Interconnect modular collar system enhances adaptability for sailors in enclosed cockpits. Musto's Ocean Technology seal guarantees the ultimate level of protection, combining experienced developers' expertise and GORE-TEX's advanced waterproof membranes.

Committed to sustainability, the HPX Collection incorporates 100% recycled face fabric for outer-layers, earning it Bluesign Approval. This commitment to environmental responsibility echoes through every element of the collection. From its rugged construction to its outstanding breathability and waterproof capabilities, the HPX Collection sets a new standard for sailing gear.



HPX GORE-TEX INFINIUM™ PRIMALOFT®: Middle Layer Jacket

Engineered to deliver exceptional comfort and warmth, this versatile, insulated jacket forms a perfect barrier against wet wind chill. Crafted with a GORE-TEX INFINIUM™ outer shell and PrimaLoft® GOLD Active insulation, the jacket is designed with functionality in mind.

HPX GORE-TEX INFINIUM™ PRIMALOFT®: Middle Layer Salopette

Introducing the high-performance HPX GORE-TEX INFINIUM™ PrimaLoft® Middle Layer Salopette, designed to provide optimal comfort and warmth between the layers. The salopette's stretch shoulders and articulated knees ensure ultimate mobility.



HPX GTX PRO Ocean Jacket

This meticulously crafted jacket sets a new standard for performance and reliability. Made with Bluesign Approved Gore-Tex Pro fabric, it provides an unrivaled barrier against the elements while ensuring exceptional breathability. Its outer collar provides an additional layer of defense, allowing you to tackle any weather with confidence.

HPX GTX PRO Ocean Trouser

Engineered with Bluesign Approved Gore-Tex Pro fabric, these trousers are the ultimate choice for sailors demanding exceptional performance. Combine the HPX GORE-TEX INFINIUM™ PrimaLoft® Middle Layer Jacket and Salopette for a dynamic mid-layer system, and top it off with the HPX GORE-TEX P O Ocean Jacket and Trouser for a formidable outer layer.

As we set sail into the 2023 boating season, we see advancements in technology and design that elevate performance and comfort to new levels. The cutting-edge products we've explored today — from Helly Hansen's hydro-power range, Gill Marine's exceptional offshore collection, Zhik's innovative watersport gear, to Musto's advanced HPX collection — reflect the essence of innovation, performance, and sustainability in sailing apparel. This year's line-up promises to equip sailors with robust, functional, and stylish gear, enabling them to meet the challenges of the sea head-on. Whether you're a professional sailor, a watersport enthusiast, or someone embarking on a new nautical adventure, this year's offerings will ensure you navigate the waters with unmatched confidence and style. Set sail with these advanced gear and let your 2023 sailing adventure be the most thrilling yet. Safe and enjoyable sailing to you all! 🌊



NAVIS™

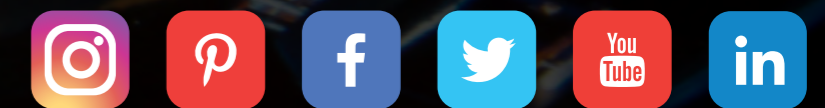
US Best Superyacht Design Magazine

Subscribe
Today

Purchase Print and Digital Subscriptions:
store.navisyachts.com

Call:
+1 305 913 1337

Follow Us:



@navismagazine



M a n y f a c i l i t i e s .
O n e b r a i n .
L Ü R S S E N r e f i t .



Safe hands, synchronized by heart and brain:
Whether your yacht was born a LÜRSEN or not, you can trust on class-leading
engineers, facilities and highly skilled craftsmen ready to refloat your dreams.
Discover the difference.

LÜRSEN
The difference.